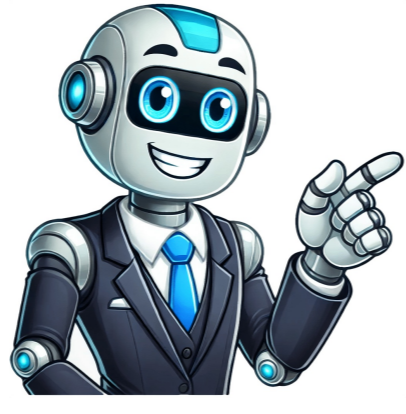


[Click Here](#)

















## Infestation potion recipe

Potions in Minecraft: Essential Tools for Survival=====There are numerous Potions available in the game, which can provide powerful buffs, healing, or even harm enemies. These essential tools are vital for survival while exploring the Nether or battling mobs.## Crafting RecipesTo brew Potions, you'll need ingredients such as Water Bottles, Glass Bottles, Cauldrons, and various base items like Nether Wart, Ghast Tears, and Redstone Dust. Here's a list of basic brewing recipes:|Potion Name | Ingredient | Effect || -- | -- | -- ||Potion of Healing | Awkward Potion + Glistening Melon Slice | Instantly restores 4 health or 2 hearts || Splash Potion of Healing | Potion of Healing + Gunpowder | Instantly restores 4 health or 2 hearts |### Advanced PotionsTo craft more complex Potions, combine the following ingredients:|Potion Name | Ingredient | Effect || -- | -- | -- ||Lingering Potion of Healing | Splash Potion of Healing + Dragon's Breath | 3 seconds, restoring up to 10 health or 4 hearts; effect doubles with every upgrade ||Lingering Potion of Regeneration | Awkward Potion + Ghast Tear | 45 seconds, restoring 1 health every 2.5 seconds up to 9 hearts |### Upgraded PotionsTo upgrade Potions, use the following combinations:|Potion Name | Ingredient | Effect || -- | -- | -- || Splash Potion of Healing II | Potion of Healing II + Gunpowder | Instantly restores 8 health or 4 hearts; effect doubles with every upgrade ||Lingering Potion of Regeneration | Splash Potion of Regeneration + Dragon's Breath | 45 seconds, restoring 1 health every 2.5 seconds up to 9 hearts |### Restoring HealthTo restore more health when drinking a Potion, use the following combinations:|Potion Name | Ingredient | Duration | Effect || -- | -- | -- | -- ||Potion of Healing II|Potion of Regeneration + | Glowstone Dust | Instant | Restores 8 health or 4 hearts; effect doubles with every upgrade ||Potion of Healing II + | Gunpowder | Instant | Restores 8 health or 4 hearts; effect doubles with every upgrade |### Image Source|Image source: Mojang via The Nerd StashThe health boost from potions is 18 health or 9 hearts every 1.25 seconds. A Strength potion is made with Awkward Potion and Blaze Powder, lasting 3 minutes, and increases melee damage by 3 health or 1.5 hearts in Java and 30% plus 1 heart in Bedrock. Variations include the Splash Potion of Strength, made with Gunpowder, and the Lingering Potion of Strength, made with Dragons Breath, both offering similar effects. An extended version, Potion of Strength+, lasts 8 minutes. The Potion of Strength II, made with Glowstone Dust, offers increased melee damage for a shorter duration of 1 minute 30 seconds. For speed, the Potion of Swiftness, made with Sugar, increases movement and jump distance by 20% for 3 minutes. It also has variations like Splash Potion of Swiftness and Lingering Potion of Swiftness. An extended version, Potion of Swiftness+, lasts 8 minutes. The Potion of Swiftness II enhances speed further. Lastly, the Potion of Leaping, made with Rabbits Foot, allows for higher jumps and reduced fall damage for 3 minutes, also available in splash and lingering forms.Looking to enhance your jumping experience in Minecraft? Here are some potions that can help you jump half a block higher and reduce fall damage. You can try:- The Potion of Leaping with Redstone Dust, which gives you the same effect as before but with an added boost from the Redstone.- Using Splash Potions of Leaping, which have two effects at once - increased jumping ability and a slower descent rate.- Another option is using Lingering Potions of Leaping or Slow Falling Potions with additional items to enhance their effects. Other potions such as Potion of Night Vision can also be used for specific purposes like exploring dark caves or finding hidden treasures.Potions for Breathing and Movement in Minecraft=====The following potions can be brewed to enhance breathing and movement abilities in Minecraft.Breathing Potions.....\*\*Splash Potion of Water Breathing\*\*:  
+ Dragon's Breath (3 minutes) - Prevents the oxygen bar from depleting\*\*Potion of Water Breathing + Redstone Dust\*\* (8 minutes): - Prevents the oxygen bar from depleting\*\*Splash Potion of Water Breathing + Gunpowder\*\* (8 minutes): - Prevents the oxygen bar from depleting\*\*Lingering Potion of Water Breathing + Splash Potion of Water Breathing + Dragon's Breath\*\* (8 minutes): - Prevents the oxygen bar from depletingFire Resistance Potions-----\*\*Potion of Fire Resistance\*\*:  
Awkward Potion + Magma Cream (3 minutes) - Immune to fire, lava, and blaze ranged attacks\*\*Splash Potion of Fire Resistance\*\* - Immune to fire, lava, and blaze ranged attacks\*\*Lingering Potion of Fire Resistance + Splash Potion of Fire Resistance + Dragon's Breath\*\* (8 minutes): - Immune to fire, lava, and blaze ranged attacksPoison Potions-----\*\*Potion Name|Ingredient|Duration|Effect\*\*  
\*\*Splash Potion of Poison\*\*  
Awkward Potion + Spider Eye (45 seconds) - Causes tick damage up to 36 health or 18 hearts. Can't kill  
\*\*Potion of Poison + Gunpowder\*\* (45 seconds): - Causes tick damage up to 36 health or 18 hearts. Can't kill  
\*\*Lingering Potion of Poison + Splash Potion of Poison + Dragon's Breath\*\* (45 seconds): - Causes tick damage up to 36 health or 18 hearts. Can't kill\*\*Potion of Poison II + Glowstone Dust\*\* (21 seconds (Java) 22 seconds (Bedrock)) - Causes tick damage up to 38 health or 19 hearts. Can't kill  
\*\*Lingering Potion of Poison II + Splash Potion of Poison II + Dragon's Breath\*\* : - Causes tick damage up to 38 health or 19 hearts. Can't killSlowness Potions-----\*\*Potion of Slowness\*\*:  
Potion of Swiftness + Fermented Spider Eye (1 minute 30 seconds) - Slows down by 15%  
\*\*Splash Potion of Slowness\*\*:  
- Slows down by 15%  
\*\*Lingering Potion of Slowness + Splash Potion of Slowness + Dragon's Breath\*\* : - Slows down by 15%There are various potions in Minecraft that can be used to gain different effects. Here's a list of some of them:\*\*Slowness Potions\*\*  
Dragon's Breath: slows down by 15%  
Potion of Slowness IV + Glowstone Dust/Gunpowder/Dragon's Breath: slows down by 60%  
\*\*Harming Potions\*\*  
Potion of Harming + Fermented Spider Eye/Gunpowder/Dragon's Breath: deals 6 health or 3 hearts damage  
Potion of Harming II + Redstone Dust/Gunpowder/Dragon's Breath: deals 12 health or 6 hearts damage, doubling with each upgrade  
\*\*Weakness Potions\*\*  
Potion of Weakness + Fermented Spider Eye/Redstone Dust: reduces melee damage by 4 health or 2 hearts (Java) or 20% and 0.5 health or 0.25 heart (Bedrock)  
\* Splash Potion of Weakness + Gunpowder/Dragon's Breath: same as above  
\*\*Infestation Potions\*\*  
Awkward Potion + Stone Block/Gunpowder/Dragon's Breath: has a 10% chance of spawning 1-2 Silverfish when hurt  
\*\*Oozing Potions\*\*  
Awkward Potion + Slime Block/Gunpowder/Dragon's Breath: drops 2 Slimes upon death  
\*\*Weaving Potions\*\*  
Awkward Potion + Cobweb/Gunpowder/Dragon's Breath: moves faster through cobwebs and drops cobwebs upon deathNote that some potions have multiple variations with different effects or durations.Potions in Minecraft come in different varieties, including some that cannot be created through normal brewing methods. These include: Potion of Wind ChargingPotion of the Turtle MasterLingering Potion of Wind ChargingLingering Potion of the Turtle Master A typical potion recipe requires water bottles or awkward potions mixed with other ingredients at a brewing stand, constructed from blaze rod and cobblestone.Aside from brewing recipes, Potions can also be acquired as loot from mobs or specific locations in Minecraft. Here are all the currently known locations: Witches, wandering traders, piglins, buried treasure, End City, Ancient City, Snowy Biome, Swamp Biome, and Bedrock Edition only Trial Chambers.Witches drop Healing, Fire Resistance, Swiftness, or Water Breathing Potions if defeated while drinking them. Wandering Traders have a chance to drink a Potion of Invisibility during nighttime and will drop it if killed while drinking one. Piglins can barter a Water Bottle (2.18%) or a Potion of Fire Resistance (1.74%) for a Gold Ingot.In addition, you can find Potions in Chests such as Buried Treasure, End City's Brewing Stand, Ancient City's Chests, Snowy Biome's Igloo basement, and Swamp Biome's Brewing Stand. Bedrock Edition only.The Potion of Infestation is a new item that was introduced in Minecraft 1.21 - Tricky Trials Update. It gives the Infested effect for 3 minutes when drank.1. first, mix nether wart and blaze powder in an awkward potion.2. then put the stone next to it on top box in brewing stand menu.3. brew this mixture.4. after brewing process finish, you will hear glug glug sound. stone disappear.5. now your bottle contain a new item - potion of infestation (infested 3:00).6. if drink potion of infestation (infested 3:00), you have 10% chance spawn silverfish when get hurt.7. can put this potion to inventory or brew more into splash potion of infestation (infested 3:00).8. with this potion, you can make new things in minecraft like new mace weapon and dyeable wolf armor.9. first you need gather ingredients - nether wart, blaze powder, basic stone and water bottle.10. to craft brewing stand, you can find it in basement igloos or village churches or craft it from nether fortress if have enough materials.Making Awkward Potions in Minecraft: A Step-by-Step GuideTo craft these potions, use glass instead of iron buckets to collect water without depleting source blocks. Next, focus on brewing potions that require nether wart as an ingredient.First, prepare your brewing stand by adding blaze powder as fuel and then insert one or more water bottles. Since the recipe remains the same for multiple potions, it's more efficient to brew three at once. After adding the necessary ingredients, including a piece of nether wart, let the mixture simmer until the water bottles transform into Awkward potions.These base potions can be upgraded with various optional ingredients to create more powerful Infested potions. By replacing the used-up nether wart with smooth stone and allowing the brewing process to complete, you'll have up to three new Infested potions ready for use. Adding gunpowder will turn them into splash potions, while Minecraft's ender dragon's breath can convert these into lingering potions. Glowstone enhances their potency, and redstone prolongs their duration. With a few additional iterations, the Infested potion can become an intimidating force in your Minecraft world.

Infused regeneration potion. Recipe invisibility potion. Potion drink recipe. Infused health potion. Potion recipe. Recipe destruction potion. Harming 2 potion recipe. Splash infestation potion recipe. Splash potion of infestation crafting recipe. Infestation potion recipe bedrock.