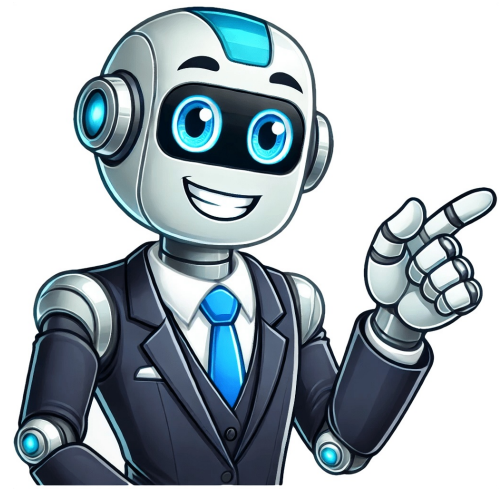


I'm not robot





If you're experiencing issues with your Rheem Criterion 2 gas furnace, you're not alone. Many homeowners face problems during the colder months, including strange noises, inconsistent heating, or complete shutdowns. Understanding how your furnace works can help you troubleshoot common issues. Rheem Criterion 2 furnaces are designed to provide efficient heating for homes, with AFUE ratings between 80% and 95%. They use a two-stage gas valve for better temperature control and an integrated control board to manage operations. Common problems include ignition failure, noisy operation, and inconsistent heating. If your furnace won't ignite, check the thermostat settings and ensure the gas supply is turned on. Inspect the ignition system for faults. If it's making noise, tighten loose components or lubricate worn-out motor bearings. If some rooms are warmer than others, inspect the ductwork for leaks or blockages. Regular maintenance is crucial to keep your furnace running efficiently and safely. Schedule annual inspections with a qualified technician to check for issues like heat exchanger concerns or ignition problems. Don't forget to replace air filters regularly, ensure vents are unobstructed, and monitor carbon monoxide levels to maintain optimal performance. To ensure your Rheem Criterion 2 gas furnace runs efficiently and safely, it's essential to clear obstructions from vents and check for proper airflow. Regular maintenance can help you troubleshoot common issues that may arise. Ignition problems often stem from a faulty igniter or blocked flame sensor. Cleaning or replacing the flame sensor should resolve this issue. Blower issues can be caused by stuck relays, faulty motor bearings, or incorrect thermostat settings. Heat exchanger concerns require immediate attention due to potential carbon monoxide leaks. Regular inspections can detect cracks early on. Proper ventilation is also crucial for maintaining safety and efficiency. To address common problems with your Rheem Criterion 2 gas furnace, follow a systematic approach: First, ensure the thermostat is set correctly and inspect the power supply. Check if the air filter is clean or obstructed, as this can impact airflow. Make sure all vents are open and unobstructed to prevent reduced heating effectiveness. Next, power off the furnace, wait for about 30 seconds to one minute, and then turn it back on to allow internal systems to reset. Inspect visible wiring for signs of wear or damage and tighten loose connections. Test the ignitor and flame sensor for proper operation. If necessary, replace a faulty igniter or clean the flame sensor. Reviewing error codes or indicators on the control board can also help you pinpoint specific issues that require attention. By following these troubleshooting steps, you'll be better equipped to address any problems with your Rheem Criterion 2 gas furnace and maintain it in top condition through regular maintenance. Perform routine checks on your Rheem Criterion 2 gas furnace to ensure optimal performance and longevity. Check the exterior for signs of wear such as rust or corrosion at least once a year. Regular maintenance visits can help identify potential issues early on. Replace air filters every 1 to 3 months to prevent clogs that restrict airflow, causing the furnace to work harder. Given article text here The furnace is a vital part of maintaining a comfortable home, but when it fails, it can be frustrating. To extend its lifespan, it's essential to perform regular maintenance tasks such as inspecting the heat exchanger for cracks or corrosion and scheduling professional checkups. In case of issues, restarting the furnace by turning off the power, waiting for 5 minutes, and then turning it back on may resolve minor problems and restore proper function. However, it's crucial to consult the user manual for specific instructions. A carbon monoxide detector should be installed nearby to ensure safety, and regular inspections can help identify potential issues before they become major problems. Troubleshooting common issues such as strange noises, inconsistent heating, or failure to start requires a systematic approach, starting with checking thermostat settings and power supply. Regular maintenance is key to the furnace's efficiency and longevity, including monthly filter changes, routine cleaning, and annual professional checkups. By following these steps, homeowners can ensure their Rheem Criterion II gas furnace operates smoothly and prolongs its lifespan. Moreover, considering safety precautions such as turning off the power and ensuring proper ventilation while troubleshooting, and monitoring error codes on the display panel to identify specific issues can facilitate accurate diagnosis and resolution. If issues persist after basic troubleshooting, it's recommended to contact a qualified technician for expert evaluations and repair options. The Rheem Criterion II gas furnace offers reliable heating, efficient operation, and durable design, making it a popular choice among homeowners. Given article text here Blower Motor: Confirm correct blower motor operation by listening for unusual noises. If the motor doesn't run, check the capacitor and wiring. Review Error Codes: Check the display panel for any error codes and consult the owner's manual for descriptions and suggested actions. Contact a Professional: If issues persist, consider obtaining professional evaluation for further insight and repair options. These steps can resolve many issues and maintain furnace function and efficiency. Maintaining your Rheem Criterion II gas furnace ensures its efficiency and extends its lifespan by following these practical tips: Change filters monthly during peak heating months to avoid airflow restriction and reduced efficiency. Inspect filters regularly and replace them if dirty or clogged. Clean the exterior with a damp cloth, vacuum around the unit, and check vents for obstructions. Arrange annual checkups with a qualified technician and consider maintenance contracts for priority service. Test your thermostat periodically to ensure accurate temperature readings, and inspect the gas supply line for leaks or damage. Implementing these tips keeps your Rheem Criterion II gas furnace running smoothly and efficiently throughout the heating season. Regular furnace upkeep includes swapping out filters, giving the unit a good cleaning, inspecting vents, and booking yearly expert inspections. This keeps your heating system running smoothly and efficiently throughout the winter. If your furnace won't turn on, double-check the thermostat settings, confirm the power and gas supplies are working properly, and take a look at the pilot light. If issues persist, consider seeking help from a professional technician. To troubleshoot common heating problems, inspect the air filter, check for any blockages in the vents, and examine the ductwork for leaks. It's also crucial to ensure the blower motor is functioning correctly. While some basic checks can be done by homeowners, it's safer to leave more complex repairs, especially those involving gas, to a professional technician.

Rheem criterion ii gas furnace troubleshooting. Rheem criterion ii gas furnace manual troubleshooting. Rheem criterion ii user manual. Rheem criterion ii. Rheem criterion 2 manual. Rheem criterion 2 troubleshooting. Rheem criterion ii troubleshooting manual. Rheem criterion ii plus 2. Rheem criterion ii error codes. Rheem criterion ii schematic. Rheem criterion ii not heating.