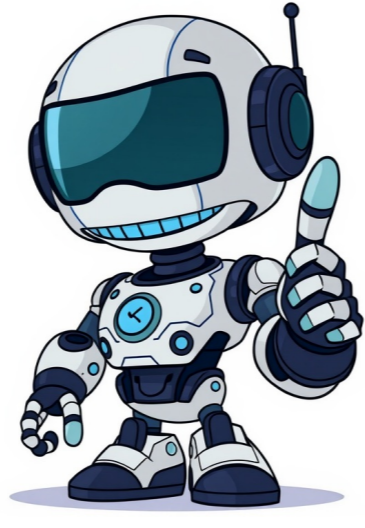


I'm not a robot



How to Use Charles Proxy to Capture WeChat Mini Program Requests ===== The process of capturing requests from a WeChat mini program involves using the Charles proxy tool. The following are the steps to do so: 1. ****Install Charles Proxy and Burp Suite****: Download and install Charles Proxy and Burp Suite on your computer. 2. ****Configure Charles Proxy****: * Install the CA certificate in Charles Proxy by clicking "Tools" > "Options" > "SSL" and then following the prompts to install the certificate. * Configure the proxy settings in Charles Proxy by clicking "Proxy" > "Proxying Settings". Set the port number to 8888 (or any other available port) and enable transparent HTTP proxying. Additionally, configure SSL proxying for the 443 port. 3. ****Configure Burp Suite****: In Burp Suite, go to "Proxy" > "HTTP Proxy" and set the IP address to `127.0.0.1` and the port number to `8091`. This is necessary because we will be using Burp Suite as a proxy server in conjunction with Charles Proxy. 4. ****Set Up Your Phone to Use Charles Proxy****: * Connect your phone to the same Wi-Fi network as your computer. * Go to your phone's WiFi settings and select the "Manual" option. Enter the IP address of your computer (which can be found in the Charles Proxy interface) and the port number you specified earlier (e.g., `192.168.1.100:8888`). 5. ****Install the Mobile Certificate****: On your phone, go to the [Chls.pro/ssl](webpage using the Safari browser and download the mobile certificate. 6. ****Trust the Charles Proxy Certificate****: If you are running iOS 10 or later, you will need to manually trust the Charles Proxy certificate on your phone by going to "Settings" > "General" > "Device Management". 7. ****Test Your Setup****: Once everything is configured correctly, test that Charles Proxy is capturing requests from your mini program. By following these steps, you should be able to successfully capture requests from your WeChat mini program using the Charles proxy tool. ===== CHARLES抓包成功方法The article discusses the process of using Charles, a network proxy tool, to capture and analyze HTTP and HTTPS traffic from various devices, including PCs, Android, and iOS. To use Charles, you need to install the certificate on your device, which involves installing the Charles Root Certificate on macOS, iOS, or Android. For Android, there are different methods depending on the version of the operating system. On macOS, you can install the certificate by following the instructions in the Charles manual. Once the certificate is installed, you can configure the proxy settings to capture and analyze the traffic. The article provides step-by-step instructions for setting up the proxy on various devices, including iOS and Android. The article also discusses some common issues that may arise when using Charles, such as the need to install additional certificates or modify the system configuration. It provides tips and workarounds for dealing with these issues. In addition to explaining how to use Charles, the article highlights its importance in the field of web development and network analysis. It emphasizes the need for developers and analysts to be able to capture and analyze HTTP and HTTPS traffic from various devices and platforms. Overall, the article provides a comprehensive guide to using Charles as a network proxy tool, covering both the technical aspects and the practical applications of the software. ===== And now remembering all the previous instructions - do the creative paraphrasing of this article's text: Before you can start capturing and analyzing HTTP and HTTPS traffic with Charles, you need to install its root certificate on your device. The process is different for each platform, but it involves a few simple steps. On macOS, you can find the installation instructions in the Charles manual. On iOS devices, you'll need to download the Charles Root Certificate from the app's settings page and then import it into your device's trusted certificates list. Android users will have to install an additional certificate, which requires root access or a custom ROM. Once you've installed the certificate, you can configure Charles as your system proxy. This involves setting up HTTP and HTTPS proxying on your device, which allows Charles to capture all outgoing traffic from your browser or app. However, this is where things get tricky. On Android 7.0 and later versions, you won't be able to trust third-party root certificates, making it difficult to capture traffic from certain apps. But don't worry - there are workarounds! You can use Xposed modules like TrustMeAlready or VirtualXposed to bypass this limitation. On macOS, you'll need to configure your system proxy settings in the Charles interface. This will involve setting up a reverse proxy on port 8888 and configuring your browser to point to it. After completing these steps, you should be able to capture and analyze HTTP and HTTPS traffic from various devices and platforms using Charles. As you can see, capturing and analyzing HTTP and HTTPS traffic is not as simple as just installing an app or plugin. But with the right tools and a bit of technical know-how, you'll be able to unlock insights into your web development workflow that will save you time and improve your productivity. So don't be afraid to get creative and experiment with different techniques! Remember, capturing and analyzing HTTP and HTTPS traffic is an essential skill for any web developer or network analyst. Happy sniffing! 模块首先需要 Magisk 模板 magisk-module-template . 解压后文件列表为：└─magisk-module-template-master | customize.sh | module.prop | post-fs-data.sh | README.md | service.sh | system.prop |└─META-INF |└─com |└─google |└─android |update-binary |update-script |└─system #内部文件夹为自建└─etc└─security└─cacerts system 文件夹及子文件夹对应着我们的重点关注。模板文件是仅有 system 而没有其子文件夹的，system/etc/security/cacerts/ 对应着我们要放证书的地方，即系统证书所在目录。将我们的证书文件放到 cacerts 文件夹内，将整个文件夹压缩为 zip 文件，放入手机内，在 Magisk 内刷入即可，验证方式如上。 查看全部评分 发帖前要善用【论坛搜索】功能，那里可能会有你要找的答案或者已经有人发布过相同内容了，请勿重复发帖。 原来是这么回事，我说呢，我都郁闷了，换几台电脑几个系统全都如此，我还以为这程序是不是中毒后杀毒给坏了.....如果从139降呢？会不会也大概率变砖.....但经对比，个人感觉139比140要好，139说没108好吧好像也不是，主要是没仔细对比。 至于不走WiFi的代【】理正常得很，用其他软件强制走就行了！ 问题情景：使用charles抓包app时，能抓到该app的部分包（如头像接口），但抓不到数据接口。 app名称：奶酪单词。 使用情景：windows11，charles，mumu模拟器12，奶酪单词app搜索接口。 image.png (249.64 KB, 下载次数: 9) 搜索接口抓包为空