

We're excited and proud to announce the release of

VDESK^{version 7}

Integrated PTZ and PTX Production System

Our powerfully simple **VDESK integrated PTZ Production System** made its debut in 2003, designed to provide multi-camera switching, recording and streaming with exceptional and intuitive robotic camera control with just one system operator.

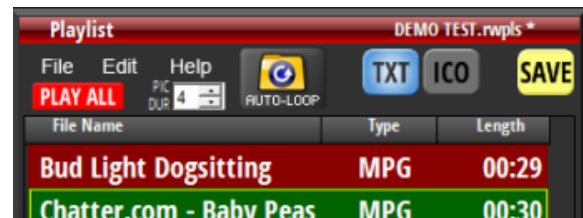
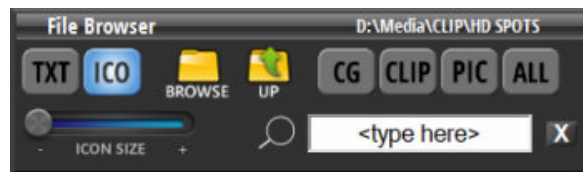
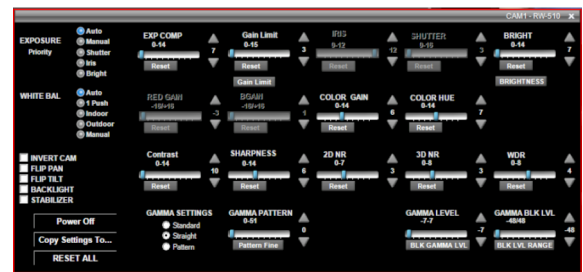
Featuring touch-screen operation, name-and-save presets, three independent User Interfaces (CLASSIC, PRODUCER and TalkingPoints) and sophisticated robotic camera and dolly control, it is still the simplest and most powerful integrated production system available.



New Version. New Vision!

NDI integration • 2 x NDI DSK

- 1 The **PTZ camera panels** have been resized to optimize workspace efficiency. Further, you can now expand the camera panels to a larger size based on your Layout preference.
- 2 The **software CCU flyout** for PTZ cameras has been redesigned with expanded functionality and feature control. You can modify the parameters for each preset that you name and save in your Layouts.
- 3 You can set a **SPEED** for any move between presets. Use the Up and Down arrows to select from 1 to 7 for coordinated pan, tilt and zoom preset recall, then click the SPEED button to activate this feature.
- 4 The **File Browser** has new, larger buttons for selecting and indicating a sub-search for CG, CLIP, PIC and ALL. The currently selected button is highlighted bright blue. The window can be resized both horizontally and vertically, and there is a larger, condensed font for improved readability of file names..
- 5 The **Playlist** features the same layout style as the File Browser, and now includes the ability to **automate sequential AND Auto-Loop playback of files and folders** with the touch of a button!



6 The **PROGRAM** window boasts the largest number of updates.

• **Easy access selection and state buttons for audio monitoring, recording and streaming**

- **9 one-touch button selections** with illuminated button states
- Addition of a **third Crawl layer**
- Dedicated **PIP LOCK** button
- **2 x NDI DSK buttons**



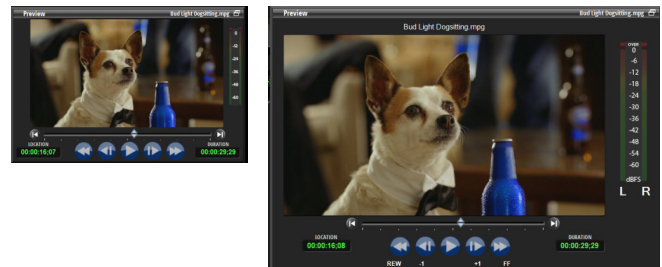
• **SHOW/HIDE Audio Mixer button**

- A new **file information display** below the video window
- **MASTER FADE button**

7 The **DSK PVW** and **PGM** window group is enlarged to optimize single monitor layouts.



8 The **PREVIEW** monitor is also enlarged, with the ability to select an **expanded display** that matches the size of the PROGRAM Window.



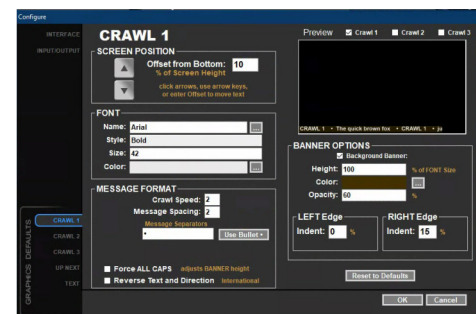
All the windows are movable so you can create as many named and saved custom Layouts as you wish.

9 The **SHOW/HIDE AUDIO MIXER** button reveals the mixer, which you can place anywhere in a single or dual monitor layout.



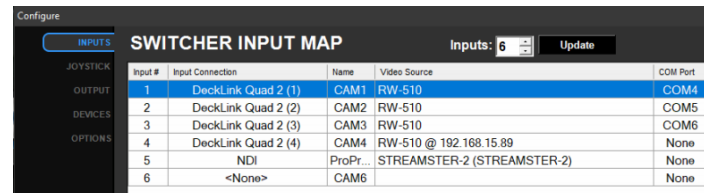
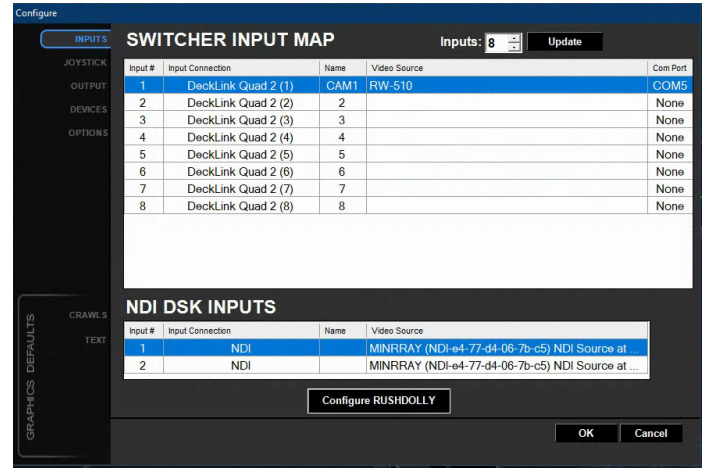
10 Redesign of the **CRAWL** Configure interface. VDESK now supports **THREE independent crawls** with unique setup properties. You can Preview any or all CRAWL overlays with the checkboxes at the top of the Preview window. This helps in selecting all three crawl positions and parameters in real-time for greater efficiency and control.

You can also **insert a graphic (logo)** as a separator between lines of text displayed sequentially in a crawl.



11 Redesign of the **Configuration** table for flexibility. The **SWITCHER INPUT MAP** lets you assign any input source to any input # (SDI, HDMI, NDI). These can be PTZ cameras, baseband video inputs and NDI sources.

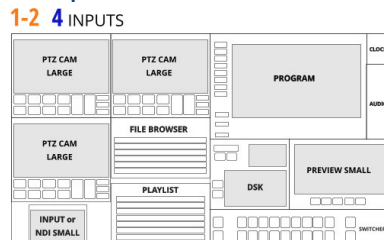
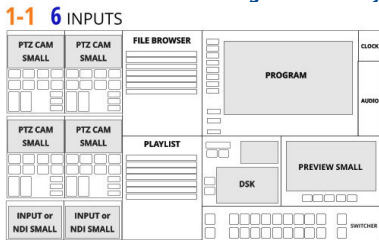
The new **NDI DSK INPUTS** support TWO external signals as either transparent or key/fill sources that toggle On/Off with the touch of the **NDI DSK 1** and **NDI DSK 2** buttons on the Program monitor.



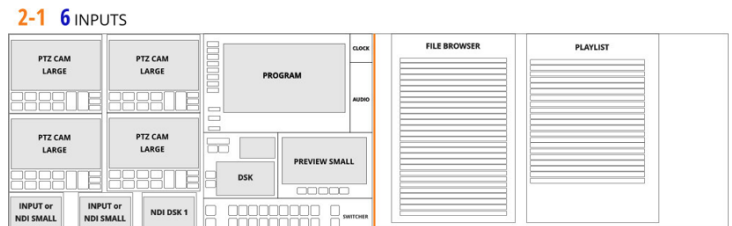
Input 5 configured with an NDI source

12 The addition of new **single monitor and dual monitor layout templates**. Get started with a template you like that opens a New, Untitled Layout. Modify however you wish and then Name/Save the Layout into the Layouts folder.

Single Monitor layout examples



Dual Monitor layout example



If touch screen operation isn't important to you, a 49" curved monitor with a resolution of 3840 x 1080 provides unlimited layout possibilities without having to deal with two separate 1920 x 1080 monitors.

Here's an example of a dual monitor layout on a Dell 49" monitor. Notice this layout uses the expanded size for the Preview Monitor (same size as Program) as well as the larger PTZ camera and video input/NDI video windows. The File Browser and Playlist can be sized both horizontally and vertically.



Redesign and consolidation of the **TEXT Edit and Configure** interface. It's now easy to control the positioning of text items, with a real-time preview of your changes while you make them. It also includes the ability to **create and save lists** with multiple text lines per list.

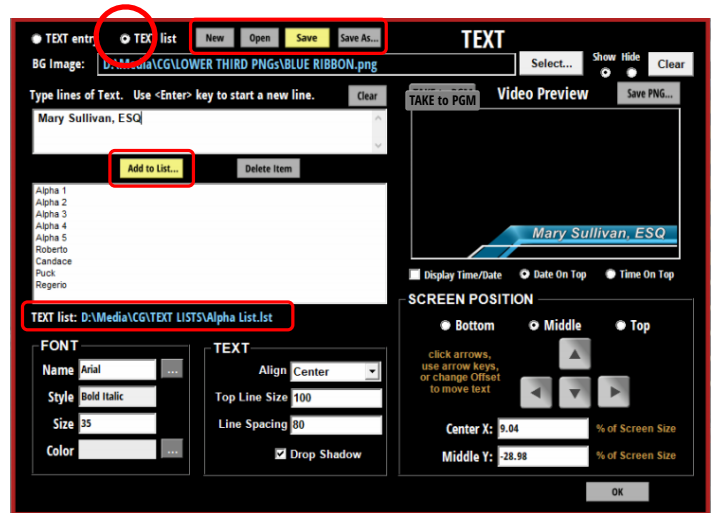
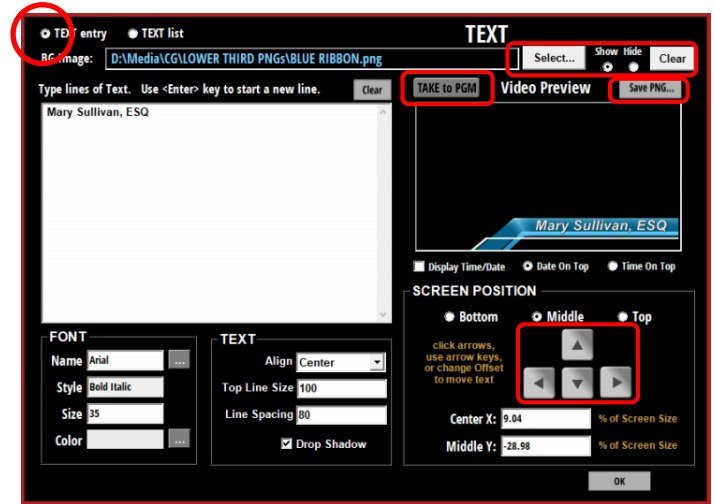
Click the **TAKE to PGM** button and whatever is displaying in the Text Preview window will fade on the Program Monitor, activating the **TEXT** button.



Click **Select...** to select a graphic to display behind the text, which is typically a 'lower third' overlay. Specify the background you wish to use from dozens of provided PNG files - and any others you add to the CG folder - then create your text and place it over the background. The selected **BG file name** displays in **blue**, and the image displays in the Text Preview window. The **Show** (BG Image) radio button is selected by default. If you want to keep the image loaded but not display it in the Text Preview, click **Hide**. Click **Clear** to clear the file name/image from the Text Preview.

To align the text over a background image use the **SCREEN POSITION radio buttons** for general vertical positions. Then use the **nudge arrow buttons** to position the text over the graphic. Click **OK** when you're done. If you want to **Save** the composite graphic as a **PNG** file with transparency, click the **Save PNG...** button to open the File Name and Save dialog. It will be saved in the **D:/Media/CG** folder, or in any subfolders you may create.

Character Generator Functionality!



Sequential file playback of Playlist items / Looping file playback from the Auto-Loop folder. This added dimension in versatility enables VDESK to automate file/folder playback during production or as a standalone content playback source.

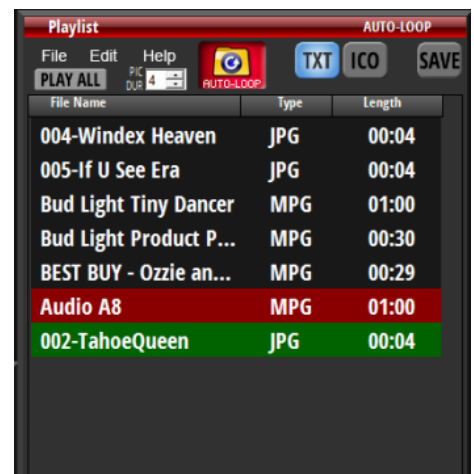
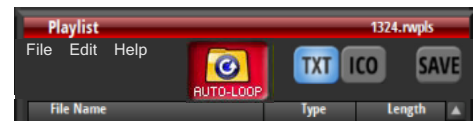
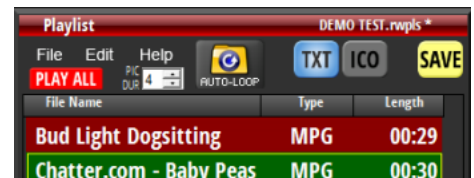
To play ALL the files in a currently displayed Playlist, just click the **PLAY ALL** button. When all the files have played, the switcher will return to the input that was active prior to Playlist playback.

Copy **clips or graphic files** without transparency (JPG, BMP, TIF, etc.) into the **Auto-Loop folder** and/or any **subfolders** you create. Click the **AUTO-LOOP** folder button to enable it, and it will turn RED.

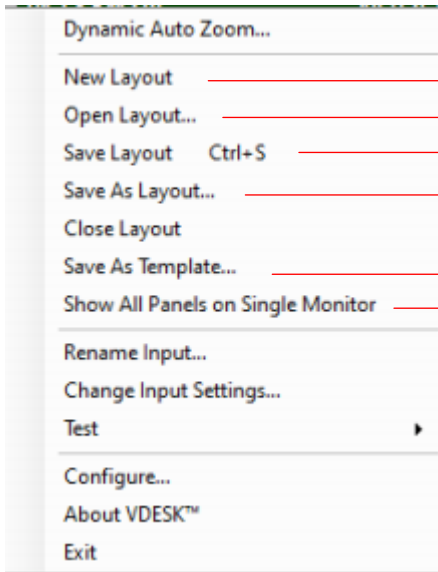
An **Auto-Loop Playlist** will pop up over the standard playlist. When the contents of the AUTO-LOOP folder are playing, the individual files cue and play in order, appearing sequentially as playlist items. The currently playing file is indicated in RED. The up-next file will be displayed as GREEN while it is cued. You can also specify Random playback and Play All Before Repeating.

Graphic files play with a user-definable duration (PIC DUR) as if they were clips.

Click the red AUTO-LOOP folder button to stop playback. The AUTO-LOOP playlist will close, and the switcher will return to its status before AUTO-LOOP was enabled.



15 Redesign of the **File Menu** to provide additional functionality and versatility.



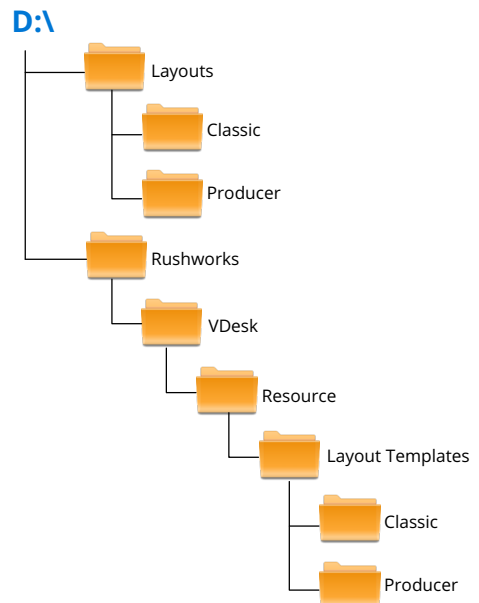
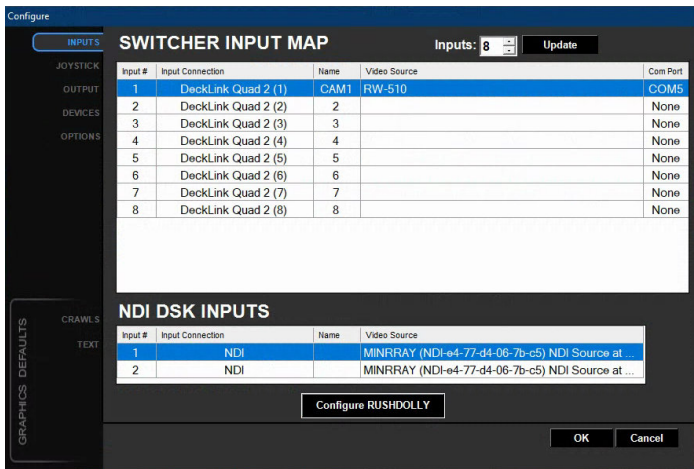
- Opens **Layout Template** folder for selection
- Opens **Layouts** folder with existing layouts
- Into **Layouts** folder
- Into **Layouts** folder
- Into **Layout Templates** folder
- Moves all panels in currently open Layout to primary monitor

16 The **Layout Template folder** contains **read-only** Layout templates for single, dual and super wide-screen monitor configurations for both the **CLASSIC** and **PRODUCER** interfaces. In these folders there are **JPG files** showing the Layout Template proxies and their corresponding Layout Template number, e.g. DEFAULT, 1-3 or 2-5, where the first number is 1 or 2 indicating the number of monitors. Dual Monitor layouts are also appropriate for use with super-wide screen (3840x1080) single monitors.

When a Layout Template is opened it creates an **Untitled Layout**, indicated by an asterisk (*) in the Input 1 title bar. When selecting **Save** or **Save As**, they go into the existing **D:\Layouts\Classic** or **D:\Layouts\Producer** folders.

When the desired Layout Template is opened (using File Open or double-click), the corresponding **Configure** file is also created, matching the number and type of inputs in the Layout. When you click **Configure...** you can click on any of the input sources and change any items accordingly, as well as configuring PTZ cameras and NDI sources. When complete you click **Save** or **Save As** to name and save the Layout in the Layouts/Classic or Layouts/Producer folders.

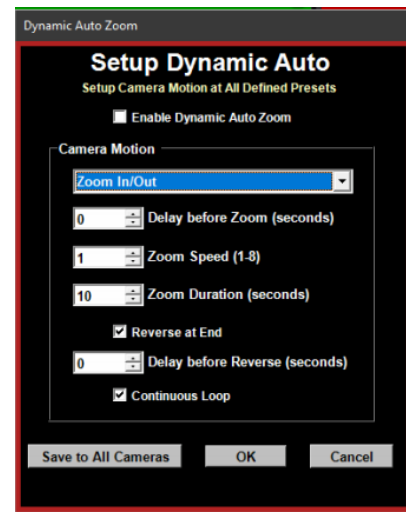
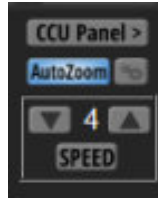
Configure up to 12 inputs: SDI • HDMI • NDI + 2 x NDI DSK Inputs



New Layout (Single or Dual): Open **Configure** panel with current input mappings. Use **DEFAULT** single or dual monitor window layout.

17 Dynamic Auto Zoom functions. Add the constant dynamics of 'cameras in motion' for your productions. These settings let you customize the behavior of each PTZ camera's Auto Zoom activity.

- Zoom In / Zoom Out / Zoom In/Out
- Delay before Zoom
- Zoom Speed
- Zoom Duration
- Reverse at End
- Delay before Reverse
- Continuous Loop



Now Shipping!



Put your favorite camera or camcorder on our **PTX Model 3 PRO** pan/tilt head and take advantage of integrated PTZ control. Use virtually any controller that provides **VISCA over IP** communications.

Remotely control positioning and many camera functions using a joystick and various hardware and software interfaces.



Available Soon!

We've designed a custom through-the-glass teleprompter rig for the PTX Model 3 PRO. It attaches to the pan arm, assuring the prompter and program monitors are always facing the speaker. With the telescoping pedestal option its perfect for newsroom and similar style productions .



Scheduling & Automated Playback

Our A-LIST television automation systems have been running networks, full and low-power stations and cable channels since 2003, and are a great complement to our VDESK production capabilities.

There are three configurations to choose from:

- **A-LIST Streamster**, a network appliance for creating and managing your own Internet TV channel
- **A-LIST Streamster Plus**, which adds SDI and HDMI output as well as NDI input and output. It also includes our SegmentR PRO file segmenting and transcoding utility
- **A-LIST Broadcast**, which includes all the 'necessaries' for running a traditional TV channel. These include the ability to import third-party traffic schedules with as-run reports; EAS support; video routing switcher interfaces and much more



If you have any questions about the features, functions and overall capabilities of VDESK 7 and integrated robotic cameras and heads, or about any of our production or automation solutions, please don't hesitate to call or email.

We're here for you!

888.894.7874

rush@rushworks.tv

VDESK version **7**
Integrated PTZ and PTX Production System



- cool technology for*
- **PRODUCTION**
 - **PLAYBACK**
 - **STREAMING**