

Humbercare is a charity which came from a desire to offer additional help and assistance to offenders and those at risk to reduce the risk of re-offending through local projects. We currently work with over 800 service users at any one time across the Humber region. If you require any further information please refer to www.humbercare.org.uk or call our Head Office on 01482 586633.



Our Vision

That every individual has the opportunity to access a safe place that they can call home, within which they can realise their full potential, optimise their life chances, improve their skills, achieve independent living and become active and responsible members of the community.

All tailored to the **individual's** needs and aspirations

Our Values



Provide - providing quality accommodation, innovative services, choices and appropriate information, advice, and guidance

Prevent - preventing homelessness, reoffending, reliance on acute and long-term health and social care services



Promote - promoting potential, opportunity, and independence



Our Mission

We will provide:

- Information ✓ Accommodation ✓
- Advice ✓ Guidance ✓
- Support Services ✓
- Care ✓



How We Measure Success

The outcomes of our strategic initiatives will be measured through; Monthly reporting against Key Performance Indicators using a Balance Scorecard approach alongside results and achievement of a number of external quality assessments and accreditations



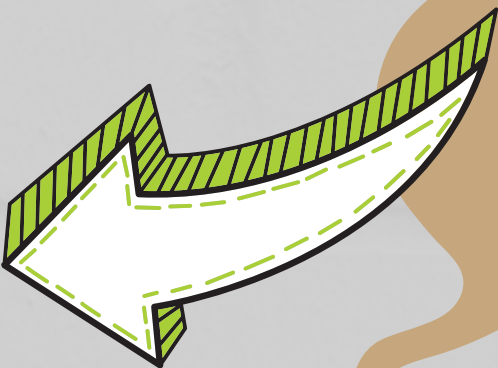
THE RIGHT PEOPLE

WITH THE RIGHT SKILLS

IN THE RIGHT PLACES

AT THE RIGHT TIME

We will **ensure** our organisation has



**Our 4 Strategic Initiatives
2023 - 2028**

Workforce Investment



Ensuring right people with right skills in right place at right time

Financial Planning



To strengthen our financial sustainability and viability

Positive Impact

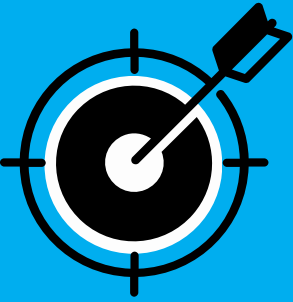


To provide services that meet customer, commissioner and stakeholder needs

Quality and Performance



Investment in organisational quality and continuous improvement



**Our Impact & Goals
2023 - 2028**

80% of referrals accepting offer of accommodation - reduced levels of rough sleeping and homelessness

60% of those housed not being charged with a further offence - reduced local offending rates

80% of those accessing mental health crisis support not re-accessing within following 3 months - reduced reliance on emergency services

80% of referrals living independently in community-based accommodation - reduced reliance on long term health and social care services

