

PLATFORM SCIENCE MESSAGING

Stay Connected with Your Drivers
through PS Messaging



Stay in sync with everyone in your fleet using Platform Science Messaging, an easy-to-use communications platform designed to keep drivers and back-office teams connected in real time around the clock. From holiday messages to job updates and everything in between, PS Messaging helps you send the right message to your team every time.

NEVER MISS A MESSAGE AGAIN

Send urgent messages to your drivers quickly and safely with priority messaging and audio playback that ensures your messages are always heard.

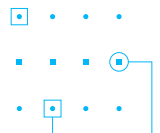
CHOOSE HOW YOU CHAT: EASILY SEND MESSAGES TO ONE DRIVER OR YOUR WHOLE TEAM

PS Messaging delivers the flexibility you need to stay connected with ease. Whether you want to send a message to your whole fleet, selected groups, or a single driver, you'll have the power to customize how you communicate.

REACH OUT IN REAL TIME: CONNECT WITH DRIVERS ANYTIME, ANYWHERE

Easily manage your messages and track who has seen them with read receipts that keep your conversations up to date.

Connect with us to see PS Messages in action and learn how we help your fleet stay in sync.

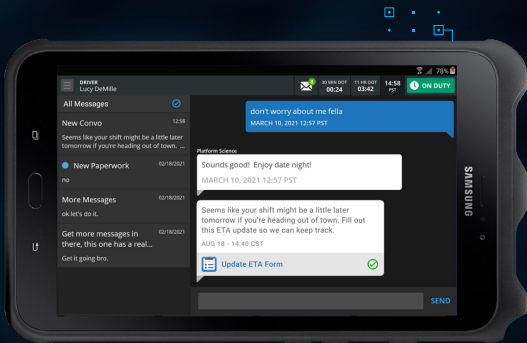


PS MESSAGING

Feature Spotlight

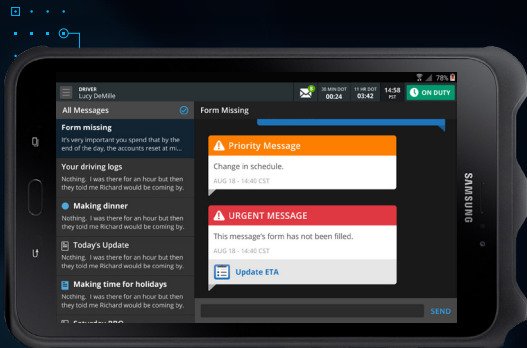
DEEP-LINKING

Save time and effort by quickly jumping between Platform Science and third-party apps with a single click via PS Messaging's intelligent deep-linking feature.



URGENT MESSAGES

Get the right information to drivers at the right time by having 'urgent messages' read aloud right away, 'priority messages' saved for their next stop, or 'normal messages' saved for whenever they're not on the road.



FLEETWIDE MESSAGES

Reach your whole fleet in one click through Fleetwide Messaging, a feature we designed for easily sharing company updates, process changes, or holiday greetings with everyone all at once.

