

B&D
INDUSTRIAL
AC & DC Drives
and Motors for
Plastics



SERVING INDUSTRY SINCE 1947

INDUSTRY DESIGNS

CUSTOM CREATIONS

THE BEST ACCESSORIES



The needs of specific industries have guided B&D to produce some of the boldest and most useful designs in the US.

#AC DRIVES & MOTORS

THROUGH MANY YEARS OF TESTING AND UNDERSTANDING THE ABB AC DRIVES BETTER THAN MOST FOLKS, WE HAVE CONCLUDED THAT THE ABB ACS580 IS THE BEST DRIVE FOR EXTRUDERS WITH PERFORMANCE AND COST IN MIND.

WHEN ABB FINLAND CAME OUT WITH THE ACS580, THERE WAS A PROBLEM, THE DRIVE'S PERFORMANCE MATCHED THE HIGH-PERFORMANCE DRIVES OF THE COMPETITORS. BUT ABB NEEDED A GENERAL-PURPOSE DRIVE. SO, THE ACS580 IS MARKETING IN THE US AS A GENERAL-PURPOSE DRIVE, BUT WE KNOW THE DIFFERENCE.



ABB

—
**VALUE
PROVIDER**

**On-site Engineering
Included**

T-T Electric

ABB

AC Motors - Page 4

#25+ YEARS OF AC UPGRADES



Drive Modules - Ready for Retro-fit

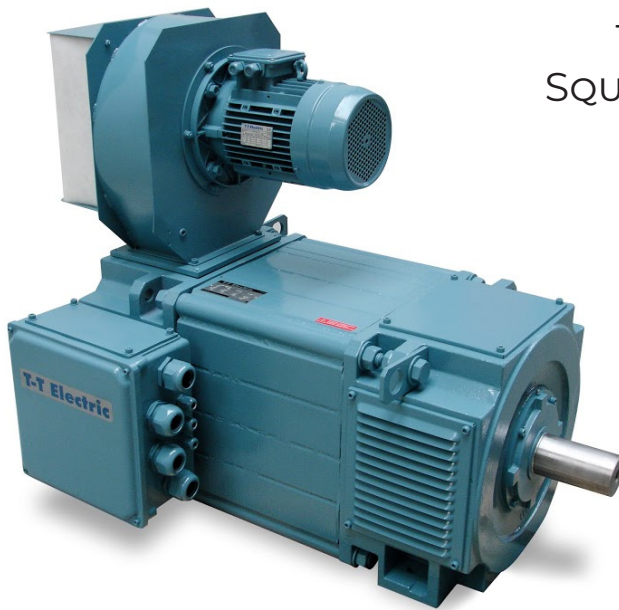
Catalog Number	Enclosure	Frame	Current (A)	Voltage	HP	Cost
ACS580-01-065A-4+BDX	N1/IP20	R4	65	460V - 3P	50	\$5,816
ACS580-01-078A-4+BDX	N1/IP20	R5	77	460V - 3P	60	\$6,574
ACS580-01-096A-4+BDX	N1/IP20	R5	96	460V - 3P	75	\$7,068
ACS580-01-124A-4+BDX	N1/IP20	R6	124	460V - 3P	100	\$8,247
ACS580-01-156A-4+BDX	N1/IP20	R7	156	460V - 3P	125	\$9,318
ACS580-01-180A-4+BDX	N1/IP20	R7	180	460V - 3P	150	\$10,528
ACS580-01-240A-4+BDX	N1/IP20	R8	240	460V - 3P	200	\$13,666
ACS580-01-260A-4+BDX	N1/IP20	R8	260	460V - 3P	200	\$14,639
ACS580-01-302A-4+BDX	N1/IP20	R9	302	460V - 3P	250	\$15,892
ACS580-01-361A-4+BDX	N1/IP20	R9	361	460V - 3P	300	\$18,204
ACS580-01-414A-4+BDX	N1/IP20	R9	414	460V - 3P	350	\$20,847

Complete Drive Cabinets - Ready for Installation

Catalog Number	Enclosure	Frame	Current (A)	Voltage	HP	Cost
ACS580-07-0246A-4+B055+BDX	N12	R8	240	460V - 3P	200	\$17,670
ACS580-07-0363A-4+B055+BDX	N12	R9	361	460V - 3P	300	\$23,569
ACS580-07-0430A-4+B055+BDX	N12	R9	414	460V - 3P	350	\$26,766
ACS580-07-0505A-4+B055+BDX	N12	R10	483	460V - 3P	400	\$28,388
ACS580-07-0585A-4+B055+BDX	N12	R10	573	460V - 3P	450	\$31,713
ACS580-07-0650A-4+B055+BDX	N12	R10	623	460V - 3P	500	\$35,038
ACS580-07-0725A-4+B055+BDX	N12	R11	705	460V - 3P	600	\$42,531
ACS580-07-0820A-4+B055+BDX	N12	R11	807	460V - 3P	700	\$49,034

THE CODE +BDX FOR THE ACS580 MEANS THAT B&D INCLUDES ONE DAY OF ENGINEERING WITH THE COST OF THE DRIVE TO COMMISSION AND CERTIFY THE DRIVE FOR THE EXTENDED WARRANTY. THIS VALUE SERVICE DOES NOT COVER TRAVEL AND EXPENSES AND MUST BE SCHEDULED TWO WEEKS IN ADVANCE, ELSE REGULAR RATES APPLY.

#AC SQUARE MOTORS



T-T ELECTRIC MAKES THE ORIGINAL
SQUARE FRAME ABB AC MOTOR WITH
STOCK TO 700HP

USED TO RETRO-FIT:
BALDOR/RELIANCE
GENERAL ELECTRIC
SIEMENS
SICME MOTORI
AND OTHERS

Motor#	HP	Base Speed	Frame	Max Speed	FLA	Weight (lbs)	Cost*
AMP 133-4A	50	1800	L2168	6700	65	373	\$5,539
AMP 159-4A	75	1800	L2578	5600	97	653	\$7,449
AMP 159-4A	100	1800	L2578	5600	126	653	\$7,449
AMP 178-4A	125	1800	L2882	4800	152	797	\$9,414
AMP 178-4A	150	1800	L2882	4800	178	997	\$9,414
AMP 178-4B	200	1800	L2897	4800	234	997	\$11,416
AMP 178-4C	250	1800	L2898	4800	293	1,317	\$13,438
AMP 229-4B	300	1800	L3614	3800	357	2,011	\$15,644
AMP 229-4B	400	1800	L3614	3800	459	2,889	\$19,809
AMP 254-4B	500	1800	L4022	3500	580	2,889	\$22,981
AMP 279-4B	600	1800	L4429	3200	680	3,637	\$31,881
AMP 279-4B	700	1800	L4429	3200	776	3,637	\$33,474

*Price is valid when purchasing an ABB drive

Performance tested with total drive
compatibility

#DC DRIVE KITS AND MOTOR

B&D STILL HAS THE WELL EARNED KNOWLEDGE TO REPLACE EXISTING DC DRIVES AND MOTORS WITH SIMILAR DESIGNS. SOMETIMES IT PAYS NOT TO CHANGE DEPENDING ON THE SITUATION. DO NOT CONSIDER AN UPGRADE TO AC UNTIL YOU SPEAK TO ONE OF OUR EXPERTS.



B&D HAS PREPPED KITS TO MAKE THE RETRO-FIT PROCESS EASIER. WE PROVIDE THE CORRECTLY SIZED KIT THAT INCLUDES THE ABB DC DRIVE, CONTACTOR, FUSES, AND LINE REACTOR.

WE CAN ASSIST WITH THE INSTALLATION AND COMPLETE THE CERTIFIED COMMISSIONING FOR YOU.



T-T ELECTRIC MAKES THE ORIGINAL SQUARE FRAME ABB DC MOTOR WITH STOCK TO 700HP - ITS READY TO GO.



#20+ YEARS OF DC UPGRADES



#Non-REGEN DC DRIVE KITS



DCS880 2Q Kit#	HP	V	A	Description	Quadrants	Cost
DCS880-S01-0045-05X0+BDX	25	500	44	DC Drive Module, 4 Fuses, 5% LR, AC Contactor	2	\$4,385
DCS880-S01-0065-05X0+BDX	40	500	64	DC Drive Module, 4 Fuses, 5% LR, AC Contactor	2	\$4,817
DCS880-S01-0090-05X0+BDX	60	500	89	DC Drive Module, 4 Fuses, 5% LR, AC Contactor	2	\$5,149
DCS880-S01-0135-05X0+BDX	75	500	133	DC Drive Module, 4 Fuses, 5% LR, AC Contactor	2	\$5,860
DCS880-S01-0180-05X0+BDX	100	500	178	DC Drive Module, 4 Fuses, 5% LR, AC Contactor	2	\$6,851
DCS880-S01-0225-05X0+BDX	125	500	222	DC Drive Module, 4 Fuses, 5% LR, AC Contactor	2	\$7,744
DCS880-S01-0270-05X0+BDX	150	500	267	DC Drive Module, 4 Fuses, 5% LR, AC Contactor	2	\$9,085
DCS880-S01-0315-05X0+BDX	200	500	312	DC Drive Module, 4 Fuses, 5% LR, AC Contactor	2	\$10,240
DCS880-S01-0405-05X0+BDX	250	500	393	DC Drive Module, 4 Fuses, 5% LR, AC Contactor	2	\$12,581
DCS880-S01-0470-05X0+BDX	300	500	465	DC Drive Module, 4 Fuses, 5% LR, AC Contactor	2	\$14,025
DCS880-S01-0610-05X0+BDX	400	500	595	DC Drive Module, 4 Fuses, 5% LR, AC Contactor	2	\$18,734
DCS880-S01-0740-05X0+BDX	500	500	733	DC Drive Module, 4 Fuses, 5% LR, AC Contactor	2	\$21,419
DCS880-S01-0900-05X0+BDX	600	500	891	DC Drive Module, 4 Fuses, 5% LR, AC Contactor	2	\$26,041



BASIC KIT ACCESSORIES (SIZES & TYPES VARY DEPENDING ON THE DRIVE)

#ANALOG TACHO REPLACEMENT KIT

We can make custom adapters and cable assemblies

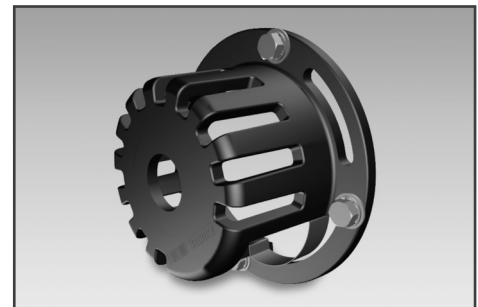


LOCAL
INVENTORY



LABORATORY
TESTED

Tested with ABB drives, units below are stock and come complete, and we have 100's of configurations.

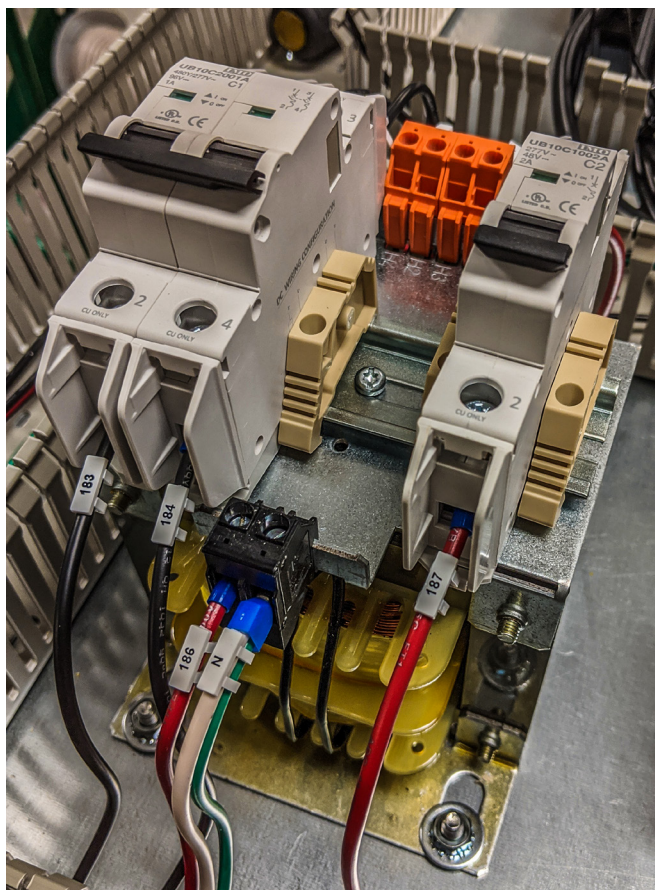


- Robust industrial encoder up to IP 67 protection
- Highly versatile fully programmable encoder (fixed units available)
- Interchangeable bore size(s) using metal inserts
- Insulating sleeve to prevent high shaft currents from damaging bearings
- Programmable resolution from 1...8192 ppr
- User programmable index pulse width and location
- Wide range voltage supply 4.75...30 VDC
- Shock resistant up to 200 g's
- Programmed by B&D from our local stock

Catalog Number	Description	Cost
11081542+BDX	Baumer HS35P Programmable Encoder - plug, basket ,and tether included	\$654

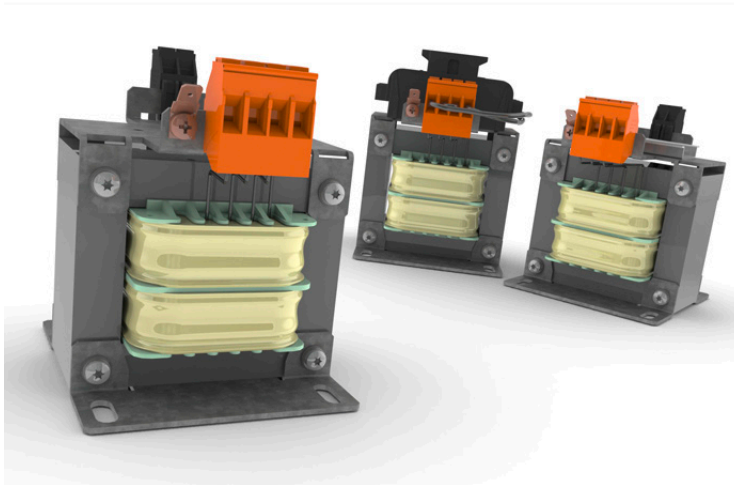
#UPDATED CONTROL TRANSFORMERS

Designed for maximum ease of use and reliability.



100% Finger-Safe
100% Protection
100% UL*

BLOCK 



We assemble to order and same day shipping available.
Larger sizes and other voltage levels are also available.

Catalog Number	Description	Cost
BLKCT-010-048-12-0+Pro	IP21 100VA 240/460V primary - 120V Secondary w. MCBs	\$120
BLKCT-025-048-12-0+Pro	IP21 250VA 240/460V primary - 120V Secondary w. MCBs	\$142
BLKCT-050-048-12-0+Pro	IP21 500VA 240/460V primary - 120V Secondary w. MCBs	\$176
BLKCT-100-048-12-0+Pro	IP21 1000VA 240/460V primary - 120V Secondary w. MCBs	\$244

* UL Ratings are designed for 480Y/277 VAC Primary

#DC MOTORS



T-T ELECTRIC WAS FOUNDED BY THOMAS THRIGE (APPRENTICE TO THOMAS EDISON) ON THE FOUNDATION OF BRINGING ELECTRICITY AS A DRIVING FORCE BEHIND INDUSTRY. BEFORE THE ASEA AND BROWN BOVERI MERGER (TO FORM ABB) IN 1989, ASEA OWNED 40% OF T-T ELECTRIC. IN 1998, T-T ELECTRIC PURCHASED THE ORIGINAL DC MOTOR FACTORY IN FRANCE FROM ABB. IN 2004, T-T ACQUIRED ANOTHER DIVISION OF ABB DEDICATED TO MOTOR SERVICE.

- IC06, FORCE VENTILATED
- AIR FILTER
- BALANCED PER IEC 60034-14, GRADE A
- BLOWER MOUNTED TOP AT NDE
- BUILT TO NEMA MG1 STANDARDS WITH CE AND CSA
- CONSTANT TORQUE 0 TO BASE SPEED
- REINFORCED IMPREGNATION
- TERMINAL BOX F1
- THERMOSTATS, NC FOR TRIP
- ENCODER



B&D HAS BEEN A LONG-TERM PARTNER OF T-T ELECTRIC THROUGH VARIOUS CHANGES BETWEEN THEM AND ABB. IT MAKES SENSE TO OFFER T-T ELECTRIC DC MOTORS WITH OUR ABB DC DRIVES TO KEEP THE LONG TRADITION OF KNOWN COMPATIBILITY AND PERFORMANCE.

#DC MOTORS



Motor#	HP	Speeds	Frame	Arm DCV	Fld DCV	Arm DCA	Fld DCA	Cost
LAK 4133C	30	1750/2300	2114ATZ	500	300	50	1.9	\$10,211
LAK 4133C	40	1750/2100	2114ATZ	500	300	64	3.2	\$10,218
LAK 4133D	50	1750/2100	2116ATZ	500	300	84	2.6	\$12,753
LAK 4159B	60	1750/2100	2512ATZ	500	300	101	4.1	\$12,779
LAK 4159D	75	1750/2100	2515ATZ	500	300	125	4.6	\$14,970
LAK 4159D	100	1750/2100	2515ATZ	500	300	163	5.4	\$15,225
LAK 4178DA	125	1750/2000	2814ATZ	500	300	199	4.46	\$15,586
LAK 4178DA	150	1750/2000	2814ATZ	500	300	240	4.5	\$15,836
LAK 4178FA	200	1750/2100	2815ATZ	500	300	322	7.8	\$17,725
LAK 4229A	250	1750/2100	3611ATZ	500	300	398	8	\$21,398
LAK 4229A	300	1750/2100	3611ATZ	500	300	482	8	\$22,291
LAK 4254A	400	1750/2100	4011ATZ	500	300	637	9.6	\$38,358
LAK 4254C	500	1750/2100	4013ATZ	500	300	794	10.4	\$48,880
LAK 4279A	600	1750/2100	4410ATZ	500	300	946	13.6	\$77,371
LAK 4279C	700	1750/2100	4412ATZ	500	300	1102	8.9	\$71,756

***Purchase a DC Drive Kit and Motor together!
Receive 50% off of the commissioning rate.**



SEE OUR VIEWS ON DC TO AC
CONVERSIONS

