

Take your team's leadership to the next level

Growing Great Leaders™ Leadership Development



A research-informed approach to the leadership of school improvement

Growing Great Leaders™ (GGL™) is a school leadership program designed to enhance the collective efficacy of whole school leadership teams through a combination of:

- Exposure to relevant research, explicitly connected to a research validated conceptual model
- Repeated, regular opportunities to engage in structured, whole team discussions
- Extended opportunities to apply new learning within own school context
- Structured opportunities to reflect, with a skilled facilitator, on the impact of individual and collective action on school processes and student outcomes, and to problem-solve together the issues identified.

How is the GGL™ course structured?

GGL™ has four research-informed, interrelated components, each designed to enhance the efficacy of your team's leadership.

Components include:

1: Online seminars (6)

- Seminar content is based on ground-breaking research from the University of Auckland and other international sources
- The six online seminars are facilitated by University of Auckland leadership consultants (approx 2.25 hours per session)
- Seminars are enhanced with multiple, team-based, sense-making discussions.

2: Team inquiry and in-school action

- Each seminar is followed by in-school inquiry, assumption checking and application
- Team reflection and decision-making is further supported by a series of online discussions which are facilitated by trained and skilled University of Auckland specialists (following modules 2, 4 & 6).

3: Online support, readings, smart tools and resources

- All participants have 24/7 access to a tailored, easy to navigate, device-responsive website
- The site features professional readings, relevant video resources and smart tools.

4: Impact Showcase

- The course concludes with a learning showcase designed to enable leadership teams to share their significant student-centred outcomes with fellow course participants.

What if our team would like to be involved?

Course places are limited.

Please contact Tui Tuia | Learning Circle directly for options and a quote.

Course prerequisites include:

- A commitment by the full leadership team to complete all components of GGL™
- Evidence of prior involvement in personal and/or leadership team professional learning which demonstrated a student-centred leadership orientation
- An open and curious professional disposition which is truly seeking ways of enhancing outcomes for all students.

To register or find out more, please contact Richard Newton at richard.newton@auckland.ac.nz

"What an amazing course! It was truly practical and useful"

(NZ principal)

"Insightful, powerful and pragmatic"

(Australian principal)

"The best leadership learning I have experienced"

(Abu Dhabi principal)

Where do I go for more information?

Web: www.learningcircle.co.nz

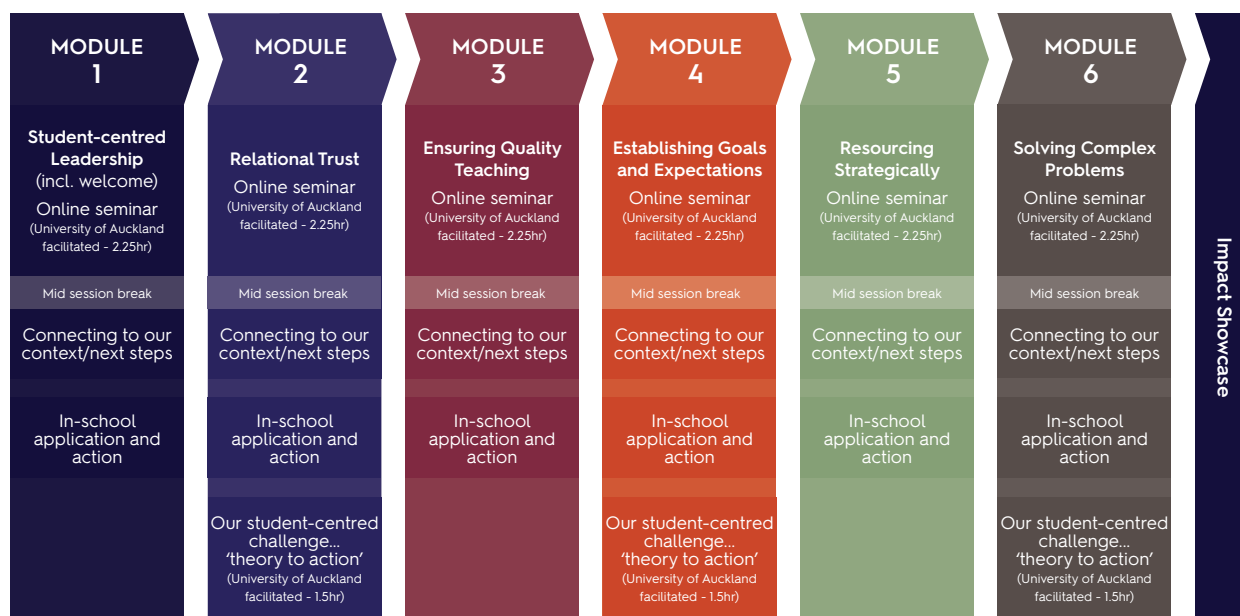
Email: esther.hall@auckland.ac.nz



**Tui Tuia
Learning Circle**

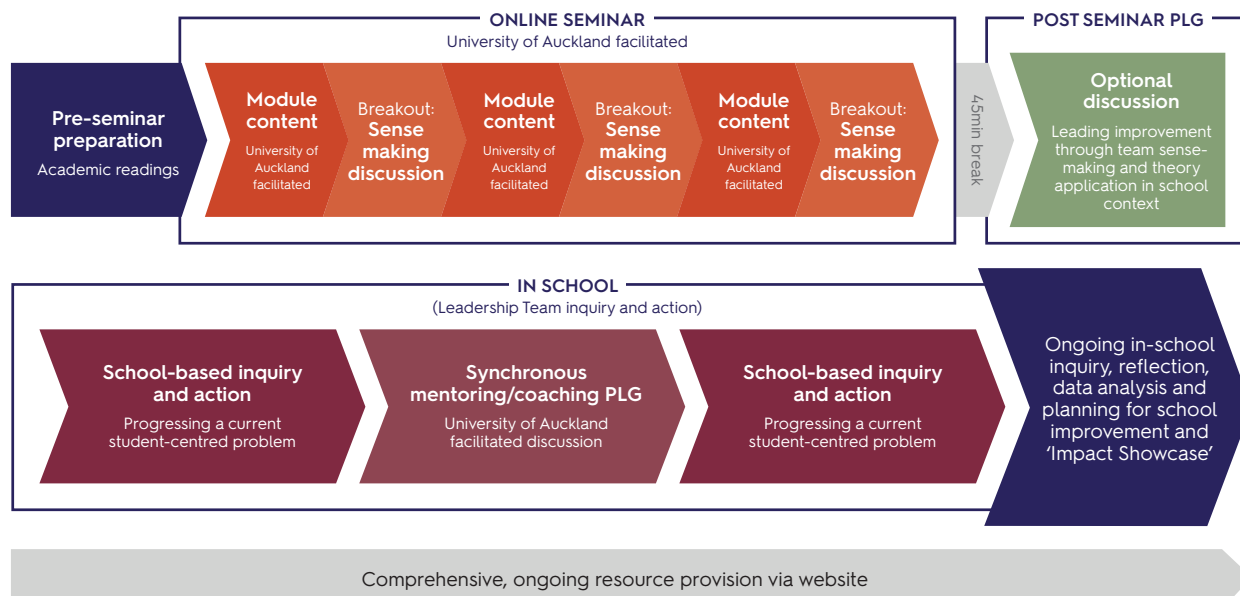


Course content and module sequence



Ongoing web based access - comprehensive course and leadership resources - accessible for 12 months following final session

A typical module – your experience



Testimonials - what leaders say about Growing Great Leaders™

'Completing GGL™ online was a key factor in building leadership coherence across the school team. The skills, knowledge and understandings gained were key to achieving British School Overseas accreditation in 2021.'

- Dene Bright, Principal, Abu Dhabi

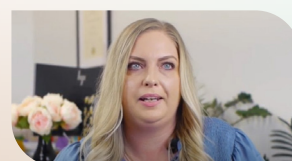
'Growing Great Leaders™ workshops are an exceptional example of online and collaborative PLD that empowered and connected adult learners around important and practical student-centred content.'

- Sean Butler, Principal, Victoria

'GGL™ imparted the most powerful set of conceptual and practical tools to our leadership team. Our leaders shared sense of purpose and clarity around what quality teaching looks like has led to richer dialogue around our work and improvement goals.'

- Margaret Aikman, Principal, NZ

Click on the image below to learn about one leadership team's experience with GGL™.



**Tui Tuia
Learning Circle**

