

VOLTS & VIEWS

Roseau Electric Cooperative, Inc.

NORTHSTREAM
FIBER
Powered by Roseau Electric Cooperative

IT'S TIME TO GET PUMPED

about air-source heat pumps!

Did you know that one system can keep you cool in the summer, warm you in the winter and save you money all year long?

These are only a few of the reasons why you should get pumped about air-source heat pumps!

Air-source heat pumps are superefficient because they transfer warm air from one place to another rather than burn fuel. In the summer, warm air is pushed from inside your home and replaced with cool air. In the winter, the air-source heat pump does the reverse. It pulls the warm air from the outside and pushes it into your home, keeping it at a comfortable temperature all year round.

This self-contained, electric system utilizes existing ductwork to connect the outdoor compressor unit and the indoor air handling unit.

TOP 5 REASONS TO GET PUMPED ABOUT AIR-SOURCE HEAT PUMPS

#1 Great incentives

Up to \$1,500 in rebates are available from Roseau Electric Cooperative for the installation of a qualifying air-source heat pump.

#2 Comfort

With a single system delivering warm and cool air throughout your home, its versatility keeps your comfort in mind around the clock.

#3 Efficiency

Since heat is moved instead of generated, your system will deliver three times more energy than the electricity consumed.

#4 Low off-peak rates

In addition to rebates, Roseau Electric Cooperative offers low off-peak electric heating rates that are about half of the standard rate.

#5 Cold-weather capable

Cold-climate heat pumps can operate efficiently in below-zero temperatures. This cutting-edge technology is a fan favorite in North Dakota and Minnesota.



Contact your energy experts at Roseau Electric Cooperative and get PUMPED to learn more about how you can save on your installation of a new air-source heat pump!

VOLTS & VIEWS

MAY 2023 - Vol. 68, No. 5

OFFICIAL PUBLICATION OF

Roseau Electric Cooperative, Inc.

1107 3rd Street N.E.

The Volts & Views (USPS-663420) is published monthly by Roseau Electric Cooperative, Inc., P.O. Box 100, Roseau, MN 56751. Periodicals postage paid at Roseau, MN. POSTMASTER: Send address changes to ROSEAU ELECTRIC COOPERATIVE, INC., P.O. Box 100, Roseau, MN 56751.

OFFICERS AND DIRECTORS

Chairman Mark Sax
 Vice Chairman Jim Hallan
 Secretary-Treasurer Mike Wahl
 Directors . . Jim Christianson, Brian Grafstrom,
 Shawn Gust, Kermit Jensen,
 Joe Tesarek, Ed Walsh
Tracey Stoll General Manager
Ryan Severson Assistant Manager
Mike Millner Line Superintendent
Jeremy Lindemann Member Services
Alex McMillin Office Manager

Regular Business Hours: 8 a.m. - 4:30 p.m.

Phone: 218-463-1543

OUTAGE CALLS:

Toll-Free: 1-888-847-8840

MINNESOTA STATE ELECTRICAL INSPECTORS

7 a.m. - 8:30 a.m. (Mon. thru Fri.)

Northwest Angle, Kittson, Marshall,
 Pennington and Roseau counties
 and parts of Beltrami County:

Ronald Ditsch - 651-368-2195

Lake of the Woods County:

Curt Collier - 218-966-5070

Inspector list is subject to change at any time.

The State of Minnesota has high wiring standards, which are in the best interest of you and your family or business. Improper wiring can damage your home, your property and equipment, and injure or kill the people you love. Currently, the state does allow homeowners to do their own residential wiring; however, it is critical that the current electrical code is followed. Any time you or an electrician does wiring or other electrical work at your home or farm, Minnesota state law requires a state wiring inspector to conduct a proper inspection of the work. A rough-in inspection must be made before any wiring is covered. A final inspection is also required. For more information visit dli.mn.gov and go to the electrical page.

Gopher State One Call
1-800-252-1166 or 811
www.gopherstateonecall.org



Anyone who plans to dig is required by law to notify the state of their intentions at least 48 hours in advance. All digging requires the 48-hour notification so that buried telephone line, television cable, pipelines, utility electrical lines, municipal water and sewer lines can be located to ensure that none will be severed or damaged.

OUR MISSION STATEMENT

Roseau Electric Cooperative is committed to providing its member-owners low-cost, high-quality, safe and reliable electricity with friendly, efficient and knowledgeable service.

This institution is an equal opportunity provider and employer.

Annual Meeting Highlights

Prize winners

\$500 Credit	\$50 Credit	Prizes
Robert & Vangie Byfuglien	Mark & Vernell Beito Nicholas & Mary Gerulli Janice Hagen Michael & Rona Tesarek Carla Lindemoen Eric & Elizabeth Klein Edward & Becky Dunham Milo Cleven William & Patricia Westman Richard Wahlstrom	Popcorn Popper Gregg & Pam Iverson Hand Mixer Doug & Theresa Bentow Toaster Arlyn Monsrud Circular Saw Jimmy & Marlys Arneson Vacuum Gerald Dvergsten
\$100 Credit		
Chuck G. Olson Greg Braaten		

Honoring Dale Moser for his 45 years of service on the Roseau Electric Cooperative Board



Pictured with his family from left to right: son, Robert; wife, Kathy; Dale; son, John; son, Dan. Not pictured: son, Jim.

Thank you, Dale!

Kermit Jensen elected as Director of District 3



From left to right, front row: Tracey Stoll, General Manager; Mark Sax, District 9, Chairman; Joe Tesarek, District 5; Mike Wahl, District 7, Secretary/Treasurer; Jim Hallan, District 1, Vice Chairman. Back row: Brian Grafstrom, District 4; Jim Christianson, District 2; Kermit Jensen, District 3; Ed Walsh, District 6; Shawn Gust, District 8

Congratulations, Kermit!



As you prepare for planting season, don't forget to plan for safety. There are many aspects to safety on the farm, but electrical safety is often overlooked. Keep these safety tips in mind as you prepare for planting:



TRAIN OTHERS

Train anyone working on your farm, including family members and seasonal workers, about electrical hazards.

SAFETY FIRST

Have daily meetings to review the day's work and discuss safety implications. Know and review where the power lines are, the clearance required, and the proper position of extensions as they are transported.



WAIT TO UNFOLD

Remind workers to fold or unfold extensions well into the field, not close to the field's edge where power lines are typically located.

USE A SPOTTER

When working in the vicinity of power lines, always have a spotter on the ground, who can direct you away from power lines or poles if you are getting too close.

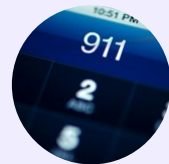


DO NOT EXIT YOUR CAB

If your machine or truck makes contact with a power line, pole, or guy wire, you could become electricity's path to ground and become electrocuted if you step out of the cab.

CALL 9-1-1

Call 9-1-1 to have your electric utility dispatched to deenergize the power source. Only exit the cab is if your equipment is on fire. If that happens, make a solid jump out and hop away with feet together as far as you can.



For more information:



Internet, TV and voice services through the fastest and most reliable network in the region.

218-463-1543 | 888-847-8840

northstreamfiber.com

Email: srose@roseauelectric.com



Grant Application Deadline
Aug. 31, 2023

To be considered at the September 2023 meeting, grant applications must be received by **Aug. 31, 2023**.

Grant applications are available at the Roseau Electric Cooperative office or by visiting our website at www.roseauelectric.com.



Our offices will be closed
Monday, May 29,
in observance of
Memorial Day

If you experience an outage,
call 1-888-847-8840.



THINKING ABOUT ADDING YOUR OWN GENERATION?

Are you thinking about installing a solar panel system, wind turbine or a standby system that can connect to the grid to supplement your power usage? These systems are called distributed energy resource (DER) generation, and you must apply for interconnection with Roseau Electric Cooperative before you move forward with a project. What is interconnection? Interconnection is adding power back safely onto the Roseau Electric Cooperative energy grid.

The interconnection process ensures:

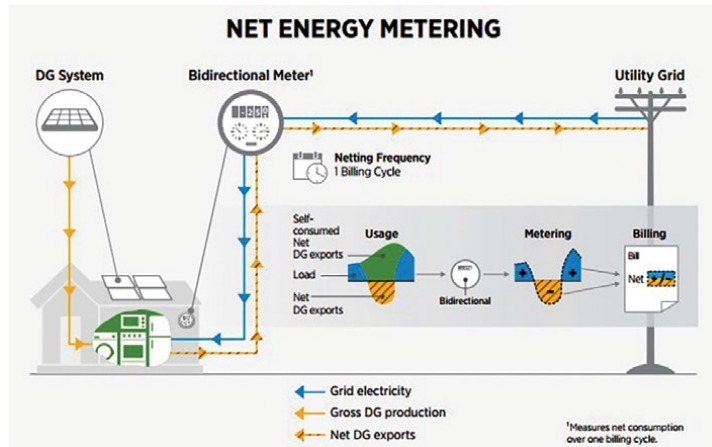
Your system is wired properly.

Roseau Electric Cooperative's equipment is adequately sized for the project.

Safety for you and Roseau Electric Cooperative's personnel working on the power lines.

To get started on your system, please follow the steps below:

1. Give Roseau Electric Cooperative a call to discuss your project early in the consideration process.
2. Log on to Roseau Electric Cooperative's website and go to the "Member Service" tab. Click on the "Renewables" tab. Click on the "Nova Portal" logo. Click on "Start New Application."
3. When fully approved by Roseau Electric Cooperative, have the project connected by a qualified electrician and certified installer.
4. Electrical work must be inspected and pass inspection by the state electrical inspector.
5. Notify Roseau Electric Cooperative when the project is complete for an inspection and testing.



Source: MN PUC (<https://mn.gov/puc/activities/economic-analysis/distributed-energy/net-metering/>)

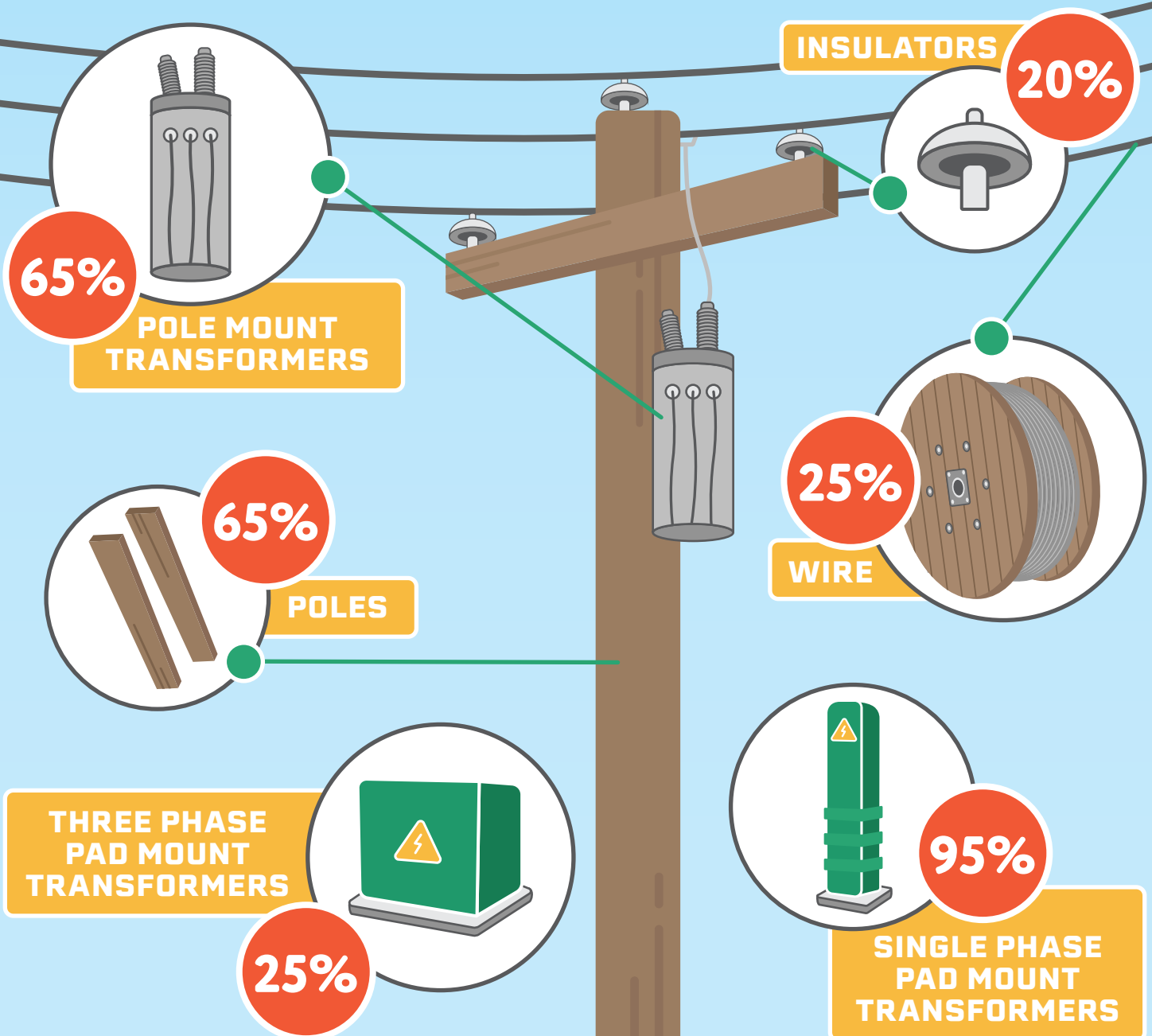
If you have any questions and are considering a solar, wind or standby system, please call **218-463-1543** or **1-888-847-8840** or go to **roseauelectric.coop**.

THE RISING COST OF ELECTRIC UTILITY MATERIALS

As inflation has increased the cost of many goods and services in our daily lives, your electric cooperative remains focused on keeping your rates as stable as possible. That job is becoming more challenging as electric utility material prices have increased in an unprecedented manner over the last two years.

Many of the cost increases being experienced cannot be avoided or easily cut out. We must continue to invest in utility poles, transformers, wire and insulators to ensure you receive reliable service. The graphic below shows some of the core components that your electric cooperative needs to operate and the corresponding price increases since 2020. As always, your cooperative will continue to manage costs to the best of its ability and work to ensure you receive the best possible value for your energy dollar.

Disclaimer: Material price increase numbers represent recent averages in our region. Material prices can and do fluctuate.





Operation Round Up® grants total \$14,000

The Operation Round Up® board met recently and a total of eight grants totaling \$14,000 were awarded.

At the discretion of the ORU board, grants may be denied for a number of reasons. The top two reasons for most denials are funds would be spent outside of our service territory and/or funds would be spent for disposable or supply-type items.

Do you know of a worthy nonprofit organization in Roseau Electric's service territory that is raising money for a project? Please

print an Operation Round Up Grant Application and Guidelines form from our website and get it to the organization. The next application deadline is Aug. 31, 2023, with the decisions made and grant awards paid out by the end of September 2023. Thank you for your part in Operation Round Up.

Serving as Operation Round Up board members are: Phil Kazmierczak, Chair, District 6; Robert Bentow, Vice Chair, District 5; Laurie Polansky, Secretary-Treasurer, District 8; Ron Tveit, Dis-

The following organizations have been awarded Operation Round Up® grants

Grygla-Gatzke Food Shelf <i>Food Supplies</i>	\$ 1,000
Malung Community Center <i>Lighting</i>	1,000
Roseau County 4H <i>Food Stand Improvements</i>	2,500
Roseau County Historical Society <i>Theater Acoustic Panels</i>	1,000
Roseau Eagles Auxiliary 3883 <i>Gas Cards for Cancer</i>	500
Ross Community Rink & Rec <i>New Well</i>	2,000
Wannaska School Rink & Rec <i>Electric Line Conversion</i>	3,000
Warroad Lost River Sports Complex <i>Event Center Shelter</i>	3,000
Total	\$14,000

trict 1; Arvid Janson, District 2; Beth Karol, District 3; Marilyn Grafstrom, District 4; Allison Harder, District 7; and Kandy Sundberg, District 9.

The average home in our area can be powered for about **\$45 per week** – the price of a new outdoor game set.

VALUING EVERYTHING THAT POWERS YOUR WEEK.



THAT'S THE VALUE OF ELECTRICITY.

Color Code for Marking Underground Utilities

WHITE	Area of Proposed Excavation
PINK	Temporary Survey Markings
RED	Electric
YELLOW	Gas, Oil, Steam, Propane
ORANGE	Communication, CATV, Fiber
BLUE	Water
PURPLE	Reclaimed Water, Irrigation
GREEN	Sewer



Know what's below.
Call before you dig.



OPERATING STATISTICS

	Monthly		Year to Date	
	March 2022	March 2023	March 2022	March 2023
Members	6,631	6,649	6,631	6,649
kWh purchased	15,526,033	15,814,657	52,335,485	48,887,918
% change		1.86%		-6.59%
Revenue	1,732,343	1,812,436	5,752,372	5,553,815
Cost of power	1,076,235	1,114,901	3,501,705	3,361,074
Other expenses	563,786	551,793	1,705,045	1,693,027
Operating margins	92,322	145,742	545,622	499,714
Non-operating margins	178,941	37,229	217,480	92,863
Patronage dividends	-	-	-	-
Total margins	271,263	182,971	763,102	592,577

member connection

ENERGY TIP

Even in summer months, adding insulation to your attic can keep your home more comfortable and save energy used by your cooling system. Attic insulation should be evenly distributed with no low spots.

Source: energystar.gov

DATES TO REMEMBER

May 14
Mother's Day

May 21
Electric bill due

May 29
Memorial Day;
Office is closed

July 12-13
Bus tour

OFFICE HOURS

Monday – Friday
8 a.m. – 4:30 p.m.
Phone: 218-463-1543

AFTER HOURS/OUTAGE NUMBER

Toll-Free: 1-888-847-8840
(main outage call center)

CALL BEFORE YOU DIG

1-800-252-1166 or 811

PAY BY PHONE

1-877-999-3412

SMARTHUB

<https://roseauelectric.smarthub.coop/>

WEBSITE

www.roseauelectric.com



LIKE US ON FACEBOOK
TO STAY UP TO DATE!

@RoseauElectricCooperativeInc

Power Plant Tour

Wednesday-Thursday
July 12 -13, 2023

Tour highlights this year:

- Minnkota's Grand Forks headquarters
- Milton R. Young Station near Center, N.D.
- BNI Coal mine
- Lodging in the Mandan/Bismarck area
- Meals and transportation included

Use the form below and send with your payment of \$85 per person or \$150 per couple.

Please print names of participants the way you would like them to appear on your name tags. We will send further details prior to departure. Return with check for \$85 per person or \$150 per couple to:

Roseau Electric Cooperative, P.O. Box 100, Roseau, MN 56751

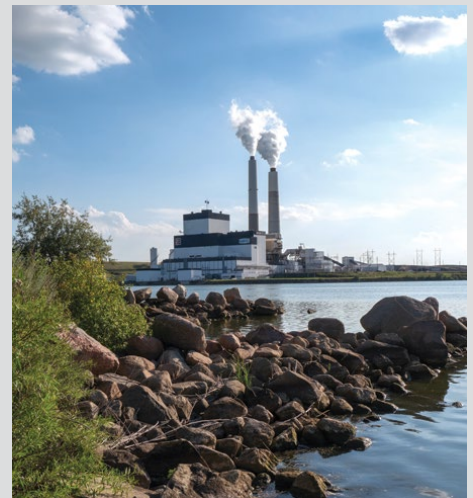
Name _____

Name _____

Address _____

City _____ State _____ Zip _____

Phone No. _____ Customer No. _____



Milton R. Young Station



Minnkota's headquarters



BNI Coal mine