

DECEMBER 2022

VOLTS & VIEWS

 **Roseau Electric Cooperative, Inc.**

NORTHSTREAM
FIBER
Powered by Roseau Electric Cooperative

MERRY CHRISTMAS

and Happy New Year! from all of us at
Roseau Electric

Roseau Electric Cooperative sincerely thanks all of our members for the continuous support they've given us this year.

We wish you a very merry Christmas and a wonderful new year!

Board Members

Jim Christianson
Brian Grafstrom
Shawn Gust

Jim Hallan
Dale Moser
Mark Sax

Joe Tesarek
Mike Wahl
Ed Walsh

Employees

Cassy Anderson
Shane Ballard
PeggySue Bergstrom
Devyn Brandt
Cliff Dahl
Marc Halvorson
Jay Hodny
Luke Holland
Mark Jennings
Bryden Johnson

Chad Johnson
Ralph Landman
Jeremy Lindemann
Rebecca Lundgren
Alex McMillin
Mike Millner
Chad Nelson
Ross Nelson
Justin Olson
Mary Preteau

Stacy Rose
Ryan Severson
Steve Severson
Jeremy Sisler
Tracey Stoll
Madison Strand
Dillion Thompson
Neal Vatnsdal
Jedd Von Ende

Our offices will be closed Monday, Dec. 26, and Monday, Jan. 2.

If you experience a power outage, please call to report it. Phone 218-463-1543 or toll-free 888-847-8840. Please have your location number ready to give to the dispatcher (shown on your bill; for example, "000-00-000").

VOLTS & VIEWS

DECEMBER 2022 - Vol. 67, No. 12
 OFFICIAL PUBLICATION OF
Roseau Electric Cooperative, Inc.
 1107 3rd Street N.E.

The Volts & Views (USPS-663420) is published monthly by Roseau Electric Cooperative, Inc., P.O. Box 100, Roseau, MN 56751. Periodicals postage paid at Roseau, MN. POSTMASTER: Send address changes to ROSEAU ELECTRIC COOPERATIVE, INC., P.O. Box 100, Roseau, MN 56751.

OFFICERS AND DIRECTORS

Chairman Mark Sax
 Vice Chairman Jim Hallan
 Secretary-Treasurer Mike Wahl
 Directors . . Jim Christianson, Brian Grafstrom,
 Shawn Gust, Dale Moser,
 Joe Tesarek, Ed Walsh
Tracey Stoll General Manager
Ryan Severson Assistant Manager
Mike Millner Line Superintendent
Jeremy Lindemann Member Services
Alex McMillin Office Manager

Regular Business Hours: 8 a.m. - 4:30 p.m.
 Phone (218) 463-1543
OUTAGE CALLS:
 Toll-Free 1-888-847-8840

MINNESOTA STATE ELECTRICAL INSPECTORS

7 a.m. - 8:30 a.m. (Mon. thru Fri.)

Northwest Angle, Kittson, Marshall,
 Pennington and Roseau counties
 and parts of Beltrami County:
Ronald Ditsch - 651-368-2195

Lake of the Woods County:
Curt Collier - 218-966-5070

Inspector list is subject to change at any time.

The State of Minnesota has high wiring standards, which are in the best interest of you and your family or business. Improper wiring can damage your home, your property and equipment, and injure or kill the people you love. Currently, the state does allow homeowners to do their own residential wiring; however, it is critical that the current electrical code is followed. Any time you or an electrician does wiring or other electrical work at your home or farm, Minnesota state law requires a state wiring inspector to conduct a proper inspection of the work. A rough-in inspection must be made before any wiring is covered. A final inspection is also required. For more information visit dli.mn.gov and go to the electrical page.

Gopher State One Call
 1-800-252-1166 or 811
www.gopherstateonecall.org



Anyone who plans to dig is required by law to notify the state of their intentions at least 48 hours in advance. All digging requires the 48-hour notification so that buried telephone line, television cable, pipelines, utility electrical lines, municipal water and sewer lines can be located to ensure that none will be severed or damaged.

OUR MISSION STATEMENT

Roseau Electric Cooperative is committed to providing its member-owners low-cost, high-quality, safe and reliable electricity with friendly, efficient and knowledgeable service.

This institution is an equal opportunity provider and employer.

Operation Round Up® grants total \$14,050



The Operation Round Up® (ORU) board met recently and a total of nine grants totaling \$14,050 were awarded.

At the discretion of the ORU board, grants may be denied for a number of reasons. The top two reasons for most denials are funds would be spent outside of our service territory and/or funds would be spent for disposable or supply-type items.

Do you know of a worthy nonprofit organization in Roseau Electric's service territory that is raising money for a project? Please print an Operation Round Up® Grant Application and Guidelines form from our website and get it to the organization. The next application deadline is **Feb. 28, 2023**, with the decisions made and grant awards paid out by the end of March 2023.

Thank you for your part in Operation Round Up®.

The ORU board of directors is as follows: Phil Kazmierczak, chair (District 6); Robert Bentow, vice chair (District 5); Laurie Polansky, secretary-treasurer (District 8); Ron Tveit (District 1); Marilyn Grafstrom (District 4); Beth Karol (District 3); Kandy Sundberg (District 9) and Allison Harder (District 7). The District 2 seat is open as of the September 2022 meeting.

The following organizations have been awarded Operation Round Up® grants

| | |
|---|--------------------|
| BGMR Gators Claybusters <i>Electrical Upgrades</i> | \$850.00 |
| Grygla Gatzke JCs <i>Brian W Olson Arena Improvements</i> | \$3,000.00 |
| Malung Community Center <i>Storage Room Shelves & Totes</i> | \$500.00 |
| Roseau American Legion <i>Furnace & Air Conditioner</i> | \$2,000.00 |
| Roseau County Historical Society <i>Information Technology</i> | \$1,000.00 |
| Roseau Eagles Auxiliary 3883 <i>Gas Cards for Cancer</i> | \$500.00 |
| Roseau Fire Department Relief Association <i>Portable Jaws of Life Unit</i> | \$4,500.00 |
| Roseau Pioneer Farm and Village <i>Lighting</i> | \$1,000.00 |
| Warroad Backpack Food Program <i>Food Storage Bins</i> | \$700.00 |
| Total | \$14,050.00 |

PROBLEMS PAYING YOUR ELECTRIC BILL?

Energy assistance may be available!

If you are receiving a low income or suffering from a temporary financial shortfall, the following agencies may be able to assist you with your electric bill. We urge you to contact them immediately to avoid disconnection if you feel you are eligible for aid.

Northwest Community Action

PO Box 67
 Badger, MN 56714-0067
 (218) 528-3258 or 800-568-5329
nwcaa.org

Bi-County Cap, Inc.

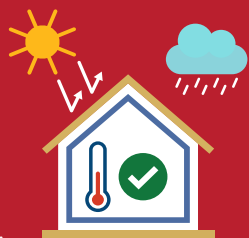
6603 Bemidji Ave. N
 Bemidji, MN 56601-8669
 (218) 751-4631

12 DAYS of Energy Efficiency

Roseau Electric Cooperative wants to spread a little energy efficiency cheer this holiday season. Here are 12 days of energy efficiency tips that will keep the cold out and the savings in!

1. Make sure your home is properly insulated

Having a properly insulated basement can save you up to 20% in energy costs.



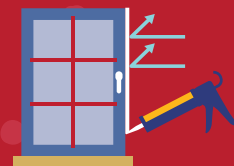
2. Turn down your thermostat



Keeping your home at the lowest temperature you are comfortable with can slow the loss of heat throughout your home.

3. Eliminate drafts near doors and windows

Using caulk and weatherstripping to seal off drafty windows and doors will help keep energy costs down this winter.



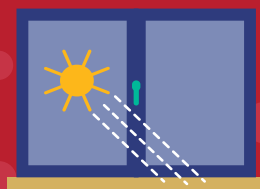
4. Lower your water heater temperature to 120 degrees



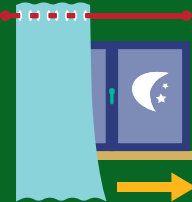
Every 10 degrees you lower your water temperature can save you around 5% in energy costs.

5. Let the sun in during the day

Free heat? Say yes!



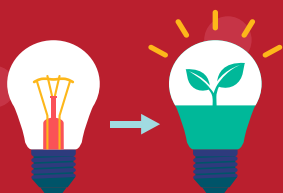
6. Close window shades at night



Don't let heat escape while you sleep! Close your window shades at night to keep the heat inside.

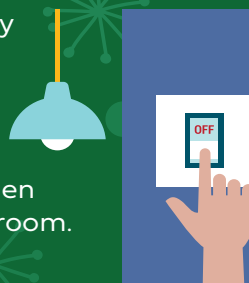
7. Switch to LED bulbs

LED holiday lights use up to 90% less energy than traditional lights and last for years.



8. Turn off all lights when not in use

A simple way to save on your energy bill is just to turn the lights off when you leave a room.



9. Wash clothes with warm or cold water



HOT COLD

Washing your clothes with warm water can cut your energy use in half, and when using cold water you can save even more.

10. Use a power strip to turn electric appliances completely off

Eliminating this standby electricity loss from home appliances could add up to significant savings on your energy bill.



11. Use your ceiling fan to circulate airflow



When your ceiling fan runs in a clockwise direction, it allows warm air to be pushed down into the rest of your home.

12. Consider installing electric technology in your home

Air-source heat pumps, electric water heaters and so many other electric appliances can save you money each month. Check out your local co-op's rebates and incentive offers for installing electric technology today!



A SOLID ENERGY PLAN FOR A VOLATILE WINTER

Roseau Electric Cooperative members should prepare for increased demand response hours this season

If you're a member enrolled in your co-op's off-peak (or demand response) program, knowing the "why" behind the moments your dual fuel heating is temporarily switched is likely important to you – especially during the long, cold months of winter. Our power supplier, Minnkota Power Cooperative, makes the decision of when to shift off-peak members to their backup heat source for a variety of reasons, but it all comes down to affordability and reliability.

In a typical winter season, Minnkota tries to keep its demand response hours managed to 250 hours. This year, the goal is the same, but there will be unique obstacles to overcome in order to meet it. One of those challenges is a three-month planned maintenance outage on Unit 2 of the Young Station, one of the largest sources of power for Minnkota's members.

"The outage is at beginning of the season, September into December, which is generally a light demand response period for us. The outage has the potential to increase our hours at the beginning of

the season," said Dan Trebil, Minnkota's energy supply manager. "That, combined with the volatile energy market that we're seeing, is going to play a part in how close we are able to manage to that 250-hour level."

When Minnkota needs additional energy to meet the needs of its members (perhaps when there's no wind for the turbines and demand is extremely high), it looks to purchase energy from a regional market. Over the past few months, that market has seen dramatic spikes in price – something Minnkota tries to avoid to protect its membership.

"The biggest things that are playing into the volatility are transmission constraints in our area, as well as the price of natural gas," Trebil explained. "Right now, the price of natural gas is actually the lowest it's been in the past few months. That was somewhat anticipated, but it's also anticipated that it will go back up come December or January."

It's important for members to prepare now for increased demand response this winter.

Individuals with off-peak dual fuel heating systems should check that they have adequate fuel for their backup source (propane, fuel oil, etc.). Off-peak members are sometimes caught by surprise when demand response kicks in for the first time, especially when it's early in the season.

Remember that your co-op's demand response program is a win-win-win for all involved. Enrolled members are thanked with a reduced electric rate (and no interruption in comfort), the co-op can navigate high-demand days while avoiding expensive market purchases, and the entire regional grid benefits from reduced demand.

"We're in an interconnected system," Trebil said. "When the grid gets into a potentially unstable situation, it's because of tight conditions between generation and demand. So we're able to respond in those situations with our demand response to not only help us and our members, but the grid as a whole. Lowering our demand helps balance the entire footprint."

2023 director elections

PETITION DEADLINE MONDAY, JAN. 30, 2023

Roseau Electric Cooperative, Inc., is organized as a cooperative and is owned by its members. The membership elects a board of directors to represent them in the operation of the cooperative.

Four directors will be elected at the 2023 Annual Meeting scheduled for April 1 at the Roseau City Center. The directors whose terms expire in 2023 are Jim Christianson, District 2 (2-year term); Dale Moser, District 3 (3-year term); Brian Grafstrom, District 4 (3-year term); and Mike Wahl, District 7 (3-year term). **Dale Moser has decided not to run for reelection.**

Nomination by petition

No nominating committee will be used. All nominations will be done by petition, including the incumbents.

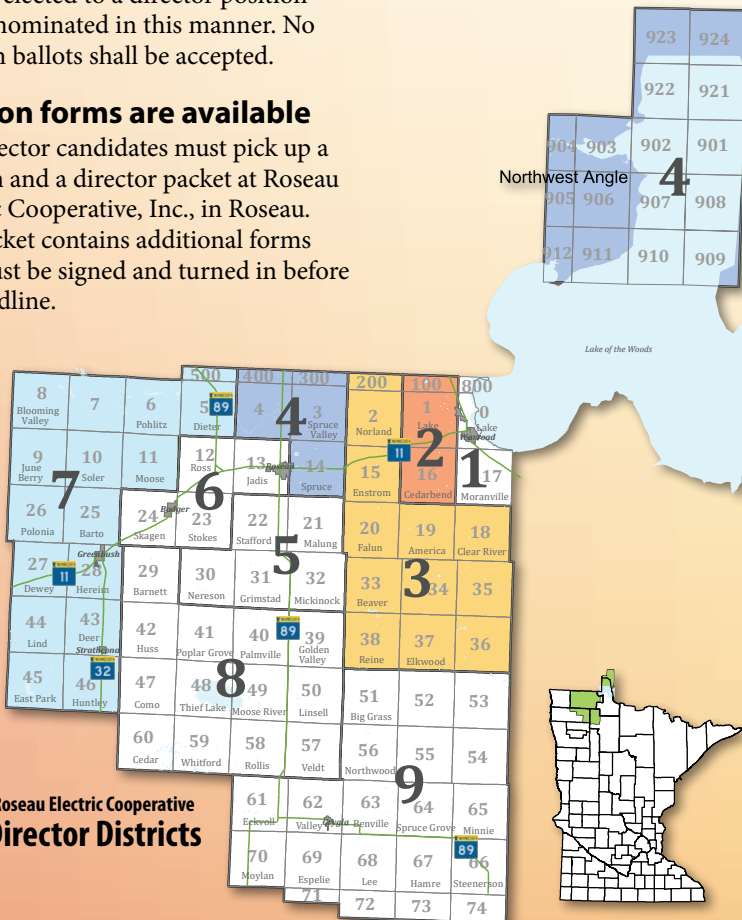
Any 10 or more members who reside in Districts 2, 3, 4 or 7 may nominate an eligible member for a director position in that district. No member may be elected to a director position unless nominated in this manner. No write-in ballots shall be accepted.

Petition forms are available

Director candidates must pick up a petition and a director packet at Roseau Electric Cooperative, Inc., in Roseau. The packet contains additional forms that must be signed and turned in before the deadline.

Petition deadline

The cooperative must receive the completed petition no later than the close of business at 4:30 p.m. on Monday, Jan. 30, 2023.



Roseau Electric Cooperative Director Districts

So, you want to be a director

Four directors will be elected at the 2023 Annual Meeting scheduled for April 1. Directors whose terms expire in 2023 are Jim Christianson, District 2 (2-year term); Dale Moser, District 3 (3-year term); Brian Grafstrom, District 4 (3-year term); and Mike Wahl, District 7 (3-year term).

Board objectives:

- To establish relationships between the board, the membership and the manager
- Define principles and practices
- Delegate authority
- Analyze operations

Meeting attendance requirements:

- **Monthly board meetings:** Board meetings are held 12 times per year, usually the fourth Wednesday of the month, 9 a.m. to 2 p.m.

Other meetings:

Roseau Electric annual meeting; Minnkota annual meeting; MREA district meetings; other meetings to learn policies and procedures of the electric industry. Expect 5 - 12 extra days per year.

Duties and Responsibilities

- Report to the membership.
- Hire and delegate authority to the manager.
- Maintain legal entity and practices.
- Review and update Bylaws.
- Require a continuous member and public relations program.
- Keep informed and grow in skills of the program.
- See that members are informed of operations.
- See that accurate minutes are prepared and maintained.
- Consider and adopt plans for objectives and goals.
- Review and update policies.
- Examine and approve annual budget and cash flow.
- Review and approve a sound financial plan.
- Establish policies and programs for good employee relationships.
- Assist in planning meetings.
- Establish special or standing committees.
- Review responsibilities of board and manager.
- Approve the selection of consultants and attorney.
- Establish measures and controls to determine effectiveness of management.
- Authorize and review annual financial audit.
- Implementation and enforcement of this position description is the responsibility of the board of directors.



CAPITAL CREDITS

Credit where credit is due – TO YOU

Electricity is a value. It powers our everyday lives, often for around \$5 a day. Being a member of an electric cooperative – like you are – offers even MORE value to your dollar, because you'll likely get some of that dollar back.

It's a nice little system we like to call **CAPITAL CREDITS**.

Electric cooperatives operate as not-for-profit utilities, which means that any excess revenues (or margins) are returned to members, not shareholders. The margins are allocated every year according to how much energy the members each buy. Then they are retired later on and paid out to those members to which they were allocated.

Since 1988, the nation's electric cooperatives have retired more than \$19 billion to members. Yes, that's billion with a "B."

Let's break down the process using this wheel to the right:



Capital credits are not necessarily returned every year – that depends on the current financial needs of the cooperative. The co-op and board work together to keep rates as low as possible while still having the revenue needed to ensure safe and reliable electricity.

It pays to be a member of an electric cooperative!

If you have questions about capital credits or want to find out if you have any unclaimed credits, please contact Roseau Electric Cooperative at **218-463-1543** or online at roseauelectric.com.

REMINDER: Get your 2022 rebates turned in by **December 21, 2022.**

member connection

Celebrate with Savings

LED Lighting Rebate

Buy energy efficient Christmas lights and decorations

How to Apply:



1. Purchase LED Christmas plug-in (not battery operated) lights and decorations in 2022.
2. Complete this rebate form and submit it to your utility or cooperative by Dec. 31, 2022, with a copy of your sales receipt and the packaging showing the number of lights per string. ENERGY STAR® LEDs are recommended.
3. Select the appropriate rebate in the box below. **(Rebate cannot exceed 50% of cost. Maximum of five strings per customer.)**

Name _____ City/Zip _____

Account # _____ Phone # _____

Address _____

| Number of Strings | Rebate per String | Total Rebate |
|-------------------------|-------------------|--------------|
| Fewer than 99 lights | \$3 | |
| 100-199 lights | \$6 | |
| 200-299 lights | \$9 | |
| Greater than 300 lights | \$12 | |

MAIL TO: Roseau Electric Cooperative • 1107 3rd Street NE • Roseau, MN 56751

ENERGY TIP

Purchasing electronic gifts this holiday season? Remember to purchase ENERGY STAR-certified electronics and give the gift of energy efficiency. Visit www.energystar.gov/productfinder for a full list of efficient products.

Source: energystar.gov

DATES TO REMEMBER

December 21
Winter begins;
Electric bill is due

December 25
Merry Christmas!

December 26
Office is closed

January 1
Happy New Year!

January 2
Office is closed

April 1
2023 Annual Meeting;
Districts 2, 3, 4, & 7 are up
for director elections
See page 5

OFFICE HOURS

Monday – Friday
8 a.m. – 4:30 p.m.
Phone 218-463-1543

AFTER HOURS/OUTAGE NUMBER

Toll-free 1-888-847-8840
(main outage call center)

CALL BEFORE YOU DIG

1-800-252-1166 or 811

PAY BY PHONE

1-877-999-3412

SMARTHUB

<https://roseauelectric.smarthub.coop/>

WEBSITE

www.roseauelectric.com

OPERATING STATISTICS

| | Monthly | | Year to Date | |
|----------------------|--------------|--------------|--------------|--------------|
| | October 2021 | October 2022 | October 2021 | October 2022 |
| Members | 6,612 | 6,647 | 6,612 | 6,647 |
| kWh purchased | 10,537,152 | 12,401,830 | 117,927,715 | 127,794,353 |
| % change | | 17.70% | | 8.37% |
| Revenue | 1,377,900 | 1,574,642 | 14,738,697 | 15,766,468 |
| Cost of power | 848,016 | 929,468 | 9,019,281 | 9,510,305 |
| Other expenses | 565,304 | 581,130 | 5,569,999 | 5,615,138 |
| Operating margins | (35,420) | 64,044 | 149,417 | 641,025 |
| Nonoperating margins | 20,484 | 8,588 | 150,577 | 78,387 |
| Patronage dividends | - | 362 | 179,055 | 199,013 |
| Total margins | (14,936) | 72,994 | 479,049 | 918,425 |



LIKE US ON FACEBOOK
TO STAY UP TO DATE!

@RoseauElectricCooperativeInc



5 electric holiday gifts

Make the holidays electric this year with a wide variety of electric-powered gifts for everyone's wish lists! Whether you are shopping for the perfect present for a do-it-yourselfer or looking to surprise your teenager with a brand-new ride, the value of electricity supplies you with some crowd-pleasing options. Here are five electric gifts that are sure to receive glowing reviews this holiday season.

1.



ELECTRIC BIKES

E-bikes are the perfect gift for any family member big or small! With a variety of types and styles, you are sure to find an e-bike that fits the needs of even the hardest-to-shop-for person on your list. Pedal assistance allows you to make a sweat-free commute to work, while also allowing you to work off those well-worth-it holiday treats on your way home.

2.



ELECTRIC SNOWBLOWERS

This time of the year is the best time to upgrade your loved ones' snow removal equipment! Electric snowblowers are quieter than traditional gas-operated models, and you don't have to store gas all winter long to get your equipment running on cold winter mornings. With just a simple push of a button, a dreaded winter task can be done with ease.

3.



ELECTRIC KITCHEN APPLIANCES

Crockpots, pressure cookers, air fryers – oh my! Electric kitchen appliances can cut meal prep time in half. From electric can openers to electric kettles, these time-saving gadgets are a big hit with first-time homeowners. The list of awesome electric appliances is endless!

4.



BATTERY-OPERATED TOOLS

Do you have a DIYer or a tinkerer in your family? Consider getting them a set of brand-new battery-operated tools this holiday season. Battery-powered tools offer the user greater flexibility and portability without sacrificing any of the power needed to get the job done.

5.



ELECTRIC VEHICLES

Looking to score some major "cool parent" points? Consider getting the new driver in your family an electric vehicle! Most electric vehicles can be charged fully for about \$8 and if you are already participating in Roseau Electric Cooperative's off-peak program, you are eligible for some really awesome savings. Check out www.energizeyourdrive.com to get more information about the benefits of electric vehicles.