

DECEMBER 2021

VOLTS & VIEWS



Roseau Electric Cooperative sincerely thanks all of our members for the continuous support they've given us this year.

We wish you a very merry Christmas and a wonderful new year!



Say "Merry Christmas" with a **Holiday Gift Certificate** from Roseau Electric Cooperative!

It's the perfect gift for the person on your list!
Gift certificate can be used on recipient's electric bill.

Contact Roseau Electric Cooperative at 218-463-1543 or toll-free at 888-847-8840 to purchase your gift certificate.

Merry Christmas

and Happy New Year!

from all of us at
Roseau Electric

Board Members

Roger Amundson
Brian Grafstrom
Shawn Gust

Jim Hallan
Wes McFarlane
Dale Moser

Mark Sax
Mike Wahl
Ed Walsh

Employees

Cassy Anderson
Shane Ballard
PeggySue Bergstrom
Devyn Brandt
Cliff Dahl
Chad Gregerson
Marc Halvorson
Jay Hodny
Luke Holland
Mark Jennings

Bryden Johnson
Chad Johnson
Ralph Landman
Jeremy Lindemann
Rebecca Lundgren
Alex McMillin
Mike Millner
Chad Nelson
Ross Nelson
Justin Olson

Mary Preteau
Stacy Rose
Ryan Severson
Steve Severson
Jeremy Sisler
Deaun Solom
Tracey Stoll
Madison Strand
Dillion Thompson
Neal Vatnsdal
Jedd Von Ende

Our offices will be closed Friday, Dec. 24, and Monday, Jan. 3.

If you experience a power outage, please call to report it. Phone 218-463-1543 or toll-free 888-847-8840. Please have your location number ready to give to the dispatcher (shown on your bill, for example "000-00-000").

VOLTS & VIEWS

DECEMBER 2021 – Vol. 66, No. 12

OFFICIAL PUBLICATION OF

Roseau Electric Cooperative, Inc.

1107 3rd Street N.E.

The Volts & Views (USPS-663420) is published monthly by Roseau Electric Cooperative, Inc., P.O. Box 100, Roseau, MN 56751. Periodicals postage paid at Roseau, MN. POSTMASTER: Send address changes to ROSEAU ELECTRIC COOPERATIVE, INC., P.O. Box 100, Roseau, MN 56751.

OFFICERS AND DIRECTORS

Chairman Mark Sax
Vice Chairman Jim Hallan
Secretary-Treasurer Wes McFarlane
Directors . . . Roger Amundson, Brian Grafstrom
Shawn Gust, Dale Moser,
Mike Wahl, Ed Walsh
Tracey Stoll General Manager
Ryan Severson Assistant Manager
Mike Millner Line Superintendent
Jeremy Lindemann Member Services
Alex McMillin Office Manager

Regular Business Hours: 8 a.m. - 4:30 p.m.
Phone (218) 463-1543

OUTAGE CALLS:

Toll-Free 1-888-847-8840

MINNESOTA STATE ELECTRICAL INSPECTORS

7 a.m. - 8:30 a.m. (Mon. thru Fri.)

Northwest Angle, Kittson, Marshall,
Pennington and Roseau counties
and parts of Beltrami County:

Ronald Ditsch – 218-779-6758

Lake of the Woods County:

Curt Collier – 218-966-5070

Inspector list is subject to change at any time.

The State of Minnesota has high wiring standards, which are in the best interest of you and your family or business. Improper wiring can damage your home, your property and equipment, and injure or kill the people you love. Currently, the state does allow homeowners to do their own residential wiring; however, it is critical that the current electrical code is followed. Any time you or an electrician does wiring or other electrical work at your home or farm, Minnesota state law requires a state wiring inspector to conduct a proper inspection of the work. A rough-in inspection must be done before any wiring is covered. A final inspection is also required. For more information visit dli.mn.gov and go to the electrical page.

Gopher State One Call
1-800-252-1166 or 811
www.gopherstateonecall.org



Anyone who plans to dig is required by law to notify the state of their intentions at least 48 hours in advance. All digging requires the 48-hour notification so that buried telephone line, television cable, pipelines, utility electrical lines, municipal water and sewer lines can be located to ensure that none will be severed or damaged.

OUR MISSION STATEMENT

Roseau Electric Cooperative is committed to providing its member-owners low-cost, high-quality, safe and reliable electricity with friendly, efficient and knowledgeable service.

This institution is an equal opportunity provider and employer.



Believe it or not, the holiday season is here and it's time to start gathering gift lists. Whether you're looking for stocking stuffers or the big box under the tree, electric gadgets are always a winner.

While things like TVs, video games, smartphones and computers are obvious electric choices, we've put together a list of emerging products that can help your friends and family ditch their old, gas-powered equipment in favor of new electrified technologies. Tools and equipment operated by electricity are often safer, quieter and less costly to operate. **Check out these five electrified gift ideas and feel free to pass the list along to Santa.**

1 **ELECTRIC LAWN CARE TOOLS**
AVERAGE PRICE POINT: \$75-200
Have you heard the buzz? Electric lawn care tools – like trimmers, edgers and leaf blowers – are quietly proving to be just as mighty as many of their gas-powered counterparts. These items share the same rechargeable battery, which helps cut the stress out of your yard cleanup activities.

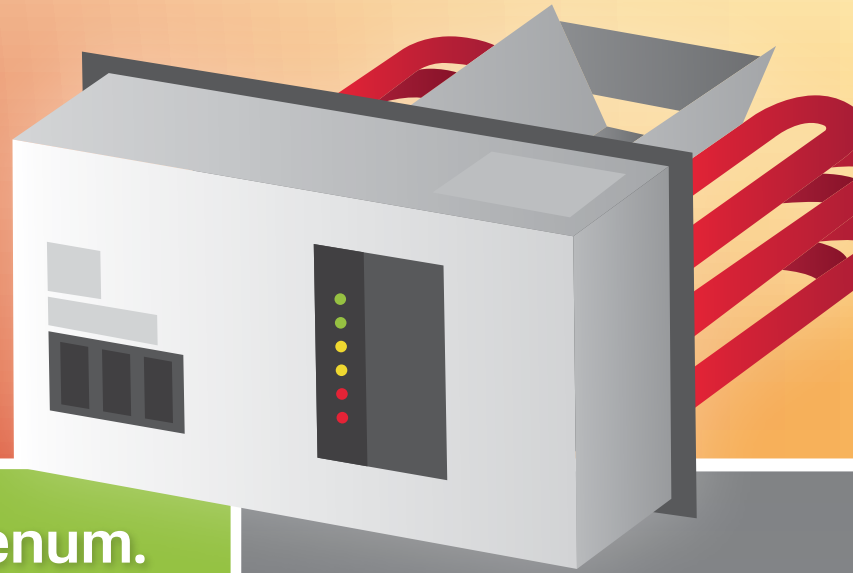
2 **ELECTRIC PRESSURE WASHER**
AVERAGE PRICE POINT: \$150-200
With their lightweight design, quiet operation and low maintenance requirements, an electric pressure washer is a great gift for the DIYer on your list.

3 **ELECTRIC SMOKER**
AVERAGE PRICE POINT: \$200-300
Who doesn't want a gift that can produce perfect ribs, chicken, brisket or salmon? An electric smoker is easy and safer to use compared to its propane and charcoal counterparts. Even heating and clean operation makes cooking the ideal meal a breeze!

4 **ELECTRIC SNOW BLOWER**
AVERAGE PRICE POINT: \$500-1,000
Removing snow is part of life in Minnesota. That doesn't mean it needs to back-breaking work. With an electric snow blower, you don't need to worry about gas, oil or regular maintenance. Instead, you pop in the battery and start it up – making it a great gift for the practical person.

5 **ELECTRIC BICYCLE**
AVERAGE PRICE POINT: \$500-1,000
An electric bicycle provides the best of both worlds when it comes to outdoor activities. It can be used as a regular bike, or the rider can use the electric motor to reach speeds north of 20 mph without the need to pedal. There are many popular models for commuting, trail riding and other off-road activities.

Scared of propane prices?



Protect yourself with a plenum.

The costs of fuels used to heat our homes in the winter are rising, and they're rising fast. Propane prices entered this year's cold season nearly 100% higher than they were at the same time last year. In a state as frigid as ours, heating with only propane can quickly take a chunk out of your holiday shopping budget – and beyond.

Protect yourself from the volatile price of propane by utilizing a dual-fuel electric plenum heater on our popular off-peak program. The cost of off-peak electricity has remained low and stable for more than a decade, unlike the seasonal swings of propane. If you already have a plenum, make sure it's turned on and working smoothly to take advantage of enormous savings.

A plenum pairs easily with your existing oil or propane forced-air system. It uses the furnace fan you already have to move air across heater elements to heat your home, as well as the same thermostat and ductwork. Most of the fall and winter season, the plenum will deliver reduced-cost off-peak

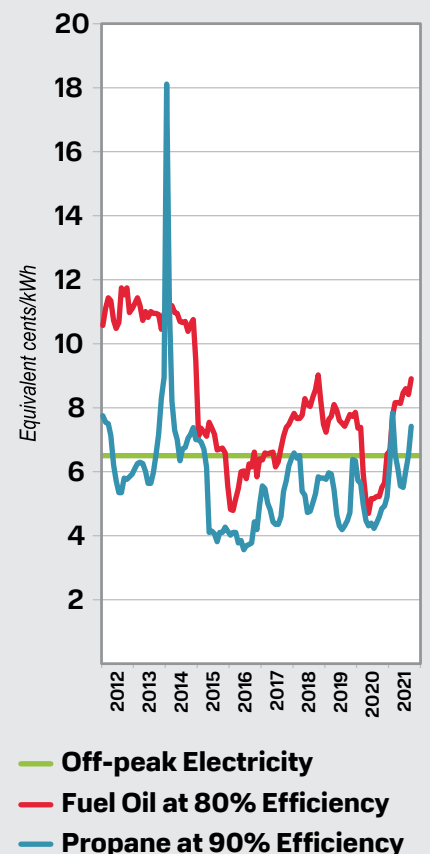
electric heat to keep your space cozy and comfortable. When your cooperative finds it necessary to lower the electric demand on its system (usually 100-200 hours per year, often during extreme cold), it will remotely switch your heat to a backup fuel, like propane. You notice no difference in comfort – but you'll notice a big difference on your energy costs!

Plenums are a safe and clean way to warm your home, and they allow you to receive the off-peak heating rate – about 50% of the standard rate – as well as a large rebate on installation. Plus, installing a plenum heater will have you relying less on your gas furnace, which can help increase the furnace's lifespan. In many cases, a plenum can be installed in conjunction with an air-source heat pump, which brings additional benefits.

Propane prices are projected to remain high throughout the winter, so call Roseau Electric Cooperative today to find out how you can get started with a plenum heater.

This 10-year snapshot shows how volatile propane and fuel oil prices can be over time, as off-peak electricity rates stay low and steady. Around 2013, propane followed an upward trend that peaked nearly three times higher than off-peak electricity, and it is currently on the rise again.

Average Home Heating Prices
(Last 10 years)



2022 director elections

PETITION DEADLINE TUESDAY, FEB. 1, 2022

Roseau Electric Cooperative, Inc., is organized as a cooperative and is owned by its members. The membership elects a board of directors to represent them in the operation of the cooperative.

Three directors will be elected at the 2022 Annual Meeting scheduled for April 2 at the Roseau City Center. The directors whose terms expire in 2022 are: Wes McFarlane, District 2 (3-year term); Roger Amundson, District 5 (3-year term); and Shawn Gust, District 8 (3-year term). **Wes McFarlane and Roger Amundson have decided not to run for reelection.**

Nomination by petition

No nominating committee will be used. All nominations will be done by petition, including the incumbents.

Any 10 or more members who reside in Districts 2, 5 or 8 may nominate an eligible member for a director position in that district. No member may be elected to a director position unless nominated in this manner. No write-in ballots shall be accepted.

Petition forms are available

Director candidates must pick up a petition and a director packet at Roseau Electric Cooperative, Inc., in Roseau. The packet contains additional forms that must be signed and turned in before the deadline.

Petition deadline

The cooperative must receive the completed petition no later than the close of business at 4:30 p.m. on Tuesday, Feb. 1, 2022.

Petition for Nomination

The following members wish to nominate [insert name] _____ for the three-year term in Districts 2, 5 or 8 (insert "District 2, 5 or 8") _____ director position, and to place such name on the ballot for the April 2, 2022, election at the annual meeting of the Cooperative, in accordance with Article III, Section 5, of the bylaws.

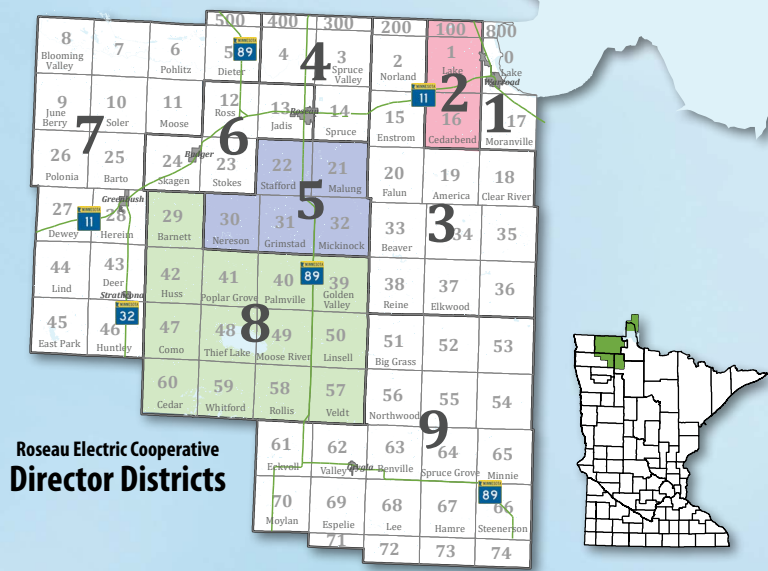
PRINTED NAME	SIGNATURE	CUSTOMER NO.
1.		
2.		
3.		
4.		
5.		
6.		
7.		
8.		
9.		
10.		
11.		
12.		
13.		
14.		
15.		
16.		
17.		
18.		
19.		
20.		

The Cooperative must receive the completed petition no later than the close of business Tuesday, Feb. 1, 2022. At the annual meeting scheduled for April 2, 2022, elections will be held for each of Districts 2, 5 and 8 for a three-year term.

The directors whose terms expire in 2022 are as follows:

DISTRICT 2 3-year term	DISTRICT 5 3-year term	DISTRICT 8 3-year term
Wes McFarlane	Roger Amundson	Shawn Gust

Any 10 or more members who reside in Districts 2, 5 or 8 may nominate an eligible member for a director position in that district. No member may be elected to a director position unless nominated in this manner. In the event of joint membership, only the signature of one joint member shall be acceptable.



So, you want to be a director

Three directors will be elected at the 2022 Annual Meeting scheduled for April 2. Directors whose terms expire in 2022 are District 2, Wes McFarlane; District 5, Roger Amundson; and District 8, Shawn Gust.

Objectives:

- To establish relationships between the board, the membership and the manager
- Define principles and practices
- Delegate authority
- Analyze operations

Meeting attendance requirements:

- **Monthly board meetings:** Board meetings are held 12 times per year, usually the fourth Wednesday of the month, 9 a.m. to 2 p.m.
- **Other meetings:** Roseau Electric annual meeting; Minnkota annual meeting; MREA district meetings; other meetings to learn policies and procedures of the electric industry. Expect 5 - 12 extra days per year.

Duties and Responsibilities

- Report to the membership.
- Hire and delegate authority to the manager.
- Maintain legal entity and practices.
- Review and update bylaws.
- Require a continuous member and public relations program.
- Keep informed and grow in skills of the program.
- See that members are informed of operations.
- See that accurate minutes are prepared and maintained.
- Consider and adopt plans for objectives and goals.
- Review and update policies.
- Examine and approve annual budget and cash flow.
- Review and approve a sound financial plan.
- Establish policies and programs for good employee relationships.
- Assist in planning meetings.
- Establish special or standing committees.
- Review responsibilities of board and manager.
- Approve the selection of consultants and attorney.
- Establish measures and controls to determine effectiveness of management.
- Authorize and review annual financial audit.
- Implementation and enforcement of this position description is the responsibility of the board of directors.

Value during volatility

Minnkota and its members expect active off-peak season spurred by volatile energy markets

Last winter, a polar vortex event sent energy market prices soaring. Fewer resources across the country were able to generate electricity in the historic cold, and demand was high for the few resources that were generating enough to sell into the electric grid.

Utilities are experiencing those high market prices again – but it's not because of a single major weather event this time. It's the climbing cost of natural gas.

“Natural gas is one of those resources that typically help manage the variability in electricity generation, and we're seeing prices that are significantly higher than what we've seen in the past 10-15 years,” explained Todd Sailer, senior manager of power supply & resource planning for Minnkota Power Cooperative (Roseau Electric Cooperative's wholesale power provider). “We're seeing prices double and triple what they were last year, or even over the last couple of years.”

While the energy markets soared for only 7-10 days in February 2021's polar vortex, Sailer says this volatility could last throughout the winter season, or longer. That's good insight for cooperative members on the demand response – or off-peak – program, which allows the co-op to temporarily interrupt service to a participant's off-peak loads (electric heating, large-capacity water heaters, electric vehicle chargers, etc.) in exchange for a lower electric rate.

“The projection is that these high prices will likely drive our demand response more than we've seen in the past years,” Sailer said.

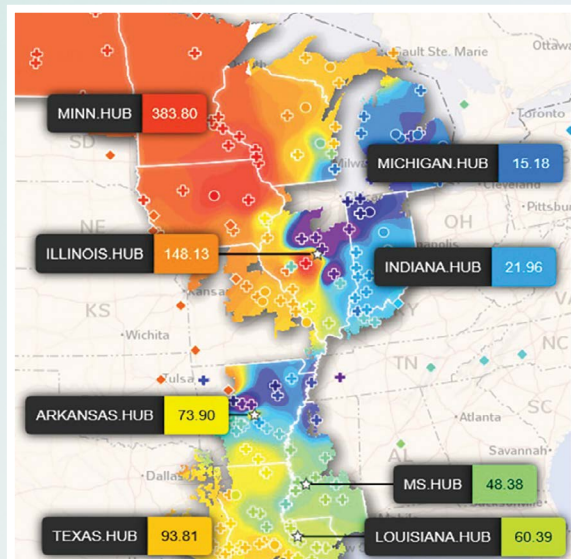
Minnkota's energy marketers are preparing for 200 hours of off-peak load control this winter, but Sailer says that could rise if natural gas prices continue to climb. He also notes that load control could be spread out over more days and not always coincide with major weather events.

“If we have days of low intermittent resources in the region, like wind power, the expectation is that the markets will respond and you'll see higher markets, which will result in more off-peak control,” he said.

Ultimately, the cooperative will deploy off-peak load control when it needs to protect itself from buying high-price energy from the market. This system was established years ago to avoid building more generation facilities for peak need that only arises a few days out of the year. That, in turn, keeps rates low for consumers. By being a part of the off-peak load control program, consumers can also take advantage of an even lower electric rate without any disruption in comfort.

As we enter the winter, Sailer urges those who are a part of the off-peak program to make sure they have adequate backup fuel supply now. When the cooperative runs its load control tests before the peak of the cold season, confirm that all parts of your heating system are running smoothly.

“It's not just natural gas – it's propane, it's all fuel sources that have seen an increase in cost. Which leads to people reliant on their off-peak system,” Sailer said. “Members should be making sure their system works.”



This image of the Midcontinent Independent System Operator (MISO) energy markets on Feb. 13, 2021, shows a swath of red, where market prices in our region climbed to about 25 times higher than recent averages. With natural gas prices high, any dip in intermittent resource generation – like wind – can send costs soaring.

GET YOUR POWERSAVERS FORMS AND RECEIPTS IN BEFORE DEC. 31, 2021!

ENERGY EFFICIENCY INCENTIVES

Sample 2021 PowerSavers/Powerful Value/REC Residential Electric Incentives for Members

(Incentive shall not exceed 50% of project costs)

Equipment	Specifications	Incentive
LED Screw-in Bulb	40-60W equivalent incandescent. ENERGY STAR®-recommended.	50% of the purchase price up to \$2/bulb
LED Screw-in Bulb	65W or greater equivalent incandescent. ENERGY STAR®-recommended.	50% of the purchase price up to \$4/bulb
LED Fixture	Complete fixture or replacement kit. ENERGY STAR®-recommended.	50% of the purchase price up to \$4/fixture
LED Outdoor Fixture	Dusk to dawn operation required. DesignLights™ Consortium or ENERGY STAR®-recommended.	50% of the purchase price up to \$10/fixture
Clothes Washer	Must be ENERGY STAR®-approved.	\$25/unit
Clothes Dryer	Must be ENERGY STAR®-approved.	\$25/unit
Refrigerator or Freezer	Must be ENERGY STAR®-approved.	\$25/unit
Recycle Old Refrigerator or Freezer	Recycling receipt required.	\$50/unit
Electric Water Heater • 55 gallon or less • 80-85 gallon • 100 gallon or greater • Conversion from gas to electric	Must be on demand response program.	\$125/\$125/\$100/unit \$200/\$200/\$300/unit \$300/\$300/\$300/unit \$250/unit
Programmable Thermostat		50% of the purchase price up to \$25
ENERGY STAR® Smart Thermostat	Wi-Fi connectivity required.	50% of the purchase price up to \$50
Tune-up for Central AC	Not valid on window AC units. Checklist on form must be completed with application.	\$25/unit
Tune-up for Air-Source Heat Pump or Mini-Split Ductless ASHP	Checklist on form must be completed with application.	\$25/unit
Supplemental Heating Source Air-Source Heat Pump	Must modulate to allow ENERGY STAR®-rated air-source heat pump to operate down to 5° F and be on demand response.	\$500/unit
Air-Source Heat Pump or Mini-Split/Ductless ASHP	Less than 17 SEER Equal to or greater than 17 SEER	\$300/\$150/\$50/ton \$500/\$150/\$50/ton
Ground-Source Heat Pump Open Loop less than 135,000 BTUH @ 59° F	16.2 EER/3.6 COP Maximum incentive \$2,500/home.	\$200/ton
Ground-Source Heat Pump Closed Loop less than 135,000 BTUH @ 77° F	14.1 EER/3.3 COP Maximum incentive \$5,000/home.	\$400/ton

Insulation and air-sealing incentives for existing homes are available. See Roseau Electric for details.

All incentives, criteria and guidelines for residential and business members can be found at www.roseauelectric.com or by calling **888-847-8840**

PROBLEMS PAYING YOUR ELECTRIC BILL?

Energy assistance may be available!

If you are receiving a low income or suffering from a temporary financial shortfall, the following agencies may be able to assist you with your electric bill. We urge you to contact them immediately to avoid disconnection if you feel you are eligible for aid.

Northwest Community Action
PO Box 67
Badger, MN 56714-0067
(218) 528-3258 or 800-568-5329
nwcaa.org

Bi-County Cap, Inc.
6603 Bemidji Ave. N
Bemidji, MN 56601-8669
(218) 751-4631



Operation Round Up® grants total \$15,255

The Operation Round Up® board met recently and a total of nine grants totaling \$15,255 were awarded.

At the discretion of the ORU board, grants may be denied for a number of reasons. The top two reasons for most denials are funds would be spent outside of our service territory and/or funds would be spent for disposable or supply-type items.

Do you know of a worthy nonprofit organization in Roseau Electric's service territory that is raising money for a project? Please print an Operation Round Up® Grant Application and Guidelines form from our website and get it to the organization. The next application deadline is **Feb. 28, 2022**, with the decisions made and grant awards paid out by the end of March 2022. Thank you for your part in Operation Round Up®.

Operation Round Up® Board of Directors: Phil Kazmierczak, chair (District 6); Robert Bentow, vice chair (District 5); Laurie Polansky, secretary-treasurer (District 8); Ron Tveit (District 1); Marilyn Grafstrom (District 4); Beth Karol (District 3); Kandy Sundberg (District 9) and Allison Harder (District 7). District 2 seat open as of March 2021 meeting.

The following organizations have been awarded Operation Round Up® grants

BGMR Softball Club <i>Bathroom Enhancement</i>	\$1,000
Grygla Lions Club <i>Grygla Community Center Flooring Replacement</i>	\$2,500
Roseau County Historical Society <i>Interactive Exhibit Display Kiosk</i>	\$1,000
Roseau Eagles Auxiliary 3882 <i>Fair Time Bingo Stand</i>	\$1,655
Roseau Farm & Pioneer Village <i>LED Lighting/Christmas Lighting</i>	\$750
Roseau Fire Department Relief Association <i>Radio Replacement</i>	\$3,000
Warroad American Legion <i>Operational Upgrades</i>	\$3,000
Warroad Community Partners <i>Augers, Riverbend Skate Path</i>	\$1,500
Warroad Senior Meals <i>Appliances</i>	\$850
Total	\$15,255

member connection

ENERGY TIP

Trim your holiday energy costs by choosing energy efficient LED lights! LED holiday lights use less energy and can last up to 40 seasons. They're also easier to install – you can connect up to 25 LED strings without overloading a wall socket! REC also offers incentives!

DATES TO REMEMBER

December 21

"Winter Begins"; Electric bill is due

December 24

Office is closed

December 25

Merry Christmas!

January 1

Happy New Year!

January 3

Office is closed

April 2

2022 Annual Meeting – Districts 2, 5 & 8 are up for director elections

See page 4

OFFICE HOURS

Monday – Friday

8 a.m. – 4:30 p.m.

Phone 218-463-1543

AFTER HOURS/OUTAGE NUMBER

Toll-free 1-888-847-8840

(main outage call center)

CALL BEFORE YOU DIG

1-800-252-1166 or 811

PAY BY PHONE

1-877-999-3412

SMARTHUB

<https://roseauelectric.smarthub.coop/>

WEBSITE

www.roseauelectric.com



LIKE US ON **FACEBOOK**
TO STAY UP TO DATE!

Celebrate with Savings

LED LIGHTING REBATE

Buy energy efficient Christmas lights and decorations

How to Apply:



1. Purchase LED Christmas plug-in (not battery-operated) lights and decorations in 2021.
2. Complete this rebate form and submit it to Roseau Electric Cooperative by Dec. 31, 2021, with a copy of your sales receipt and the packaging showing the number of lights per string. ENERGY STAR® LEDs are recommended.
3. Select the appropriate rebate in the box below. (**Rebate cannot exceed 50% of cost. Maximum of five strings per customer.**)

Name _____ City/Zip _____

Account # _____ Phone # _____

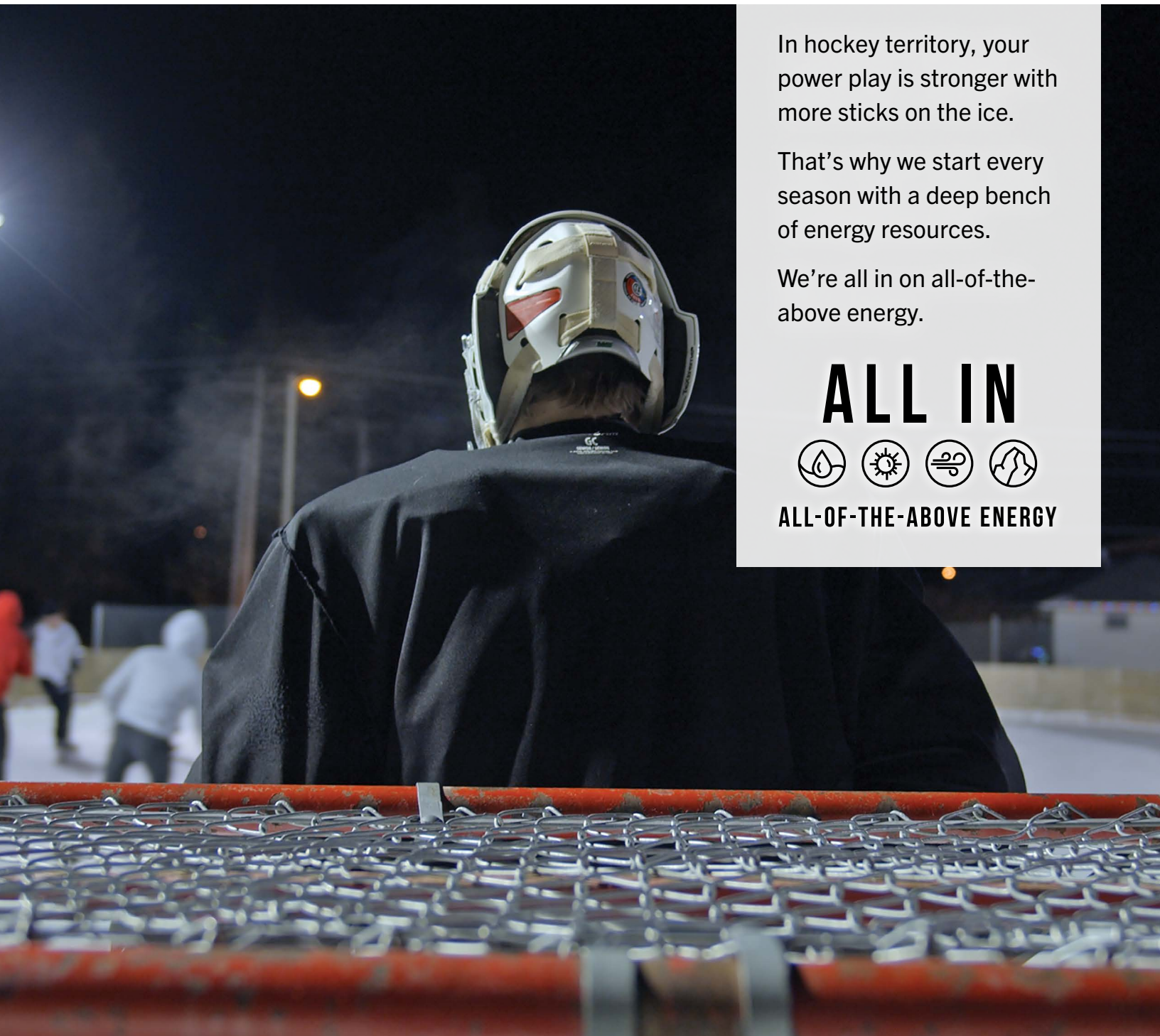
Address _____

Number of Strings	Rebate per String	Total Rebate
Fewer than 99 lights	\$3	
100-199 lights	\$6	
200-299 lights	\$9	
Greater than 300 lights	\$12	

Mail to: Roseau Electric Cooperative
P.O. Box 100 • Roseau, MN 56751

OPERATING STATISTICS

	Monthly		Year to Date	
	Oct. 2020	Oct. 2021	Oct. 2020	Oct. 2021
Members	6,561	6,612	6,561	6,612
kWh purchased	13,224,491	10,537,152	126,321,364	117,927,715
% change		-20.32%		-6.64%
Revenue	1,584,195	1,377,900	15,587,570	14,738,697
Cost of power	956,129	848,016	9,334,686	9,019,281
Other expenses	507,138	565,304	4,991,079	5,569,999
Operating margins	120,928	(35,420)	1,261,805	149,417
Nonoperating margins	9,531	20,484	139,106	150,577
Patronage dividends			25,260	179,055
Total margins	130,459	(14,936)	1,426,171	479,049



In hockey territory, your power play is stronger with more sticks on the ice.

That's why we start every season with a deep bench of energy resources.

We're all in on all-of-the-above energy.

ALL IN



ALL-OF-THE-ABOVE ENERGY