

OCTOBER 2021

VOLTS & VIEWS

 **Roseau Electric Cooperative, Inc.**
A Touchstone Energy® Cooperative 

NORTHSTREAM
FIBER
Powered by Roseau Electric Cooperative

OCTOBER IS NATIONAL CO-OP MONTH

Please join us at Roseau
Electric Cooperative
to help us celebrate!



**Roseau Electric Cooperative
Co-op Appreciation Day**

Tuesday, October 19

Serving lunch from 11 a.m. to 2 p.m.

Please join us for turkey on a bun, beans, chips & cookies.

Sign up for prizes and enjoy visiting with your co-op friends and neighbors!

VOLTS & VIEWS

OCTOBER 2021 – Vol. 66, No. 10

OFFICIAL PUBLICATION OF

Roseau Electric Cooperative, Inc.

1107 3rd Street N.E.

The Volts & Views (USPS-663420) is published monthly by Roseau Electric Cooperative, Inc., P.O. Box 100, Roseau, MN 56751. Periodicals postage paid at Roseau, MN. POSTMASTER: Send address changes to ROSEAU ELECTRIC COOPERATIVE, INC., P.O. Box 100, Roseau, MN 56751.

OFFICERS AND DIRECTORS

Chairman Mark Sax
Vice Chairman Jim Hallan
Secretary-Treasurer Wes McFarlane
Directors . . . Roger Amundson, Brian Grafstrom
Shawn Gust, Dale Moser,
Mike Wahl, Ed Walsh
Tracey Stoll General Manager
Ryan Severson Assistant Manager
Mike Millner Line Superintendent
Jeremy Lindemann Member Services
Alex McMillin Office Manager

Regular Business Hours: 8 a.m. - 4:30 p.m.

Phone (218) 463-1543

OUTAGE CALLS:

Toll-Free 1-888-847-8840

MINNESOTA STATE ELECTRICAL INSPECTORS

7 a.m. - 8:30 a.m. (Mon. thru Fri.)

Northwest Angle, Kittson, Marshall,
Pennington and Roseau counties
and parts of Beltrami County:

Ronald Ditsch – 218-779-6758

Lake of the Woods County:

Curt Collier – 218-966-5070

Inspector list is subject to change at any time.

The State of Minnesota has high wiring standards, which are in the best interest of you and your family or business. Improper wiring can damage your home, your property and equipment, and injure or kill the people you love. Currently, the state does allow homeowners to do their own residential wiring; however, it is critical that the current electrical code is followed. Any time you or an electrician does wiring or other electrical work at your home or farm, Minnesota state law requires a state wiring inspector to conduct a proper inspection of the work. A rough-in inspection must be made before any wiring is covered. A final inspection is also required. For more information visit dli.mn.gov and go to the electrical page.

Gopher State One Call
1-800-252-1166 or 811
www.gopherstateonecall.org



Anyone who plans to dig is required by law to notify the state of their intentions at least 48 hours in advance. All digging requires the 48-hour notification so that buried telephone line, television cable, pipelines, utility electrical lines, municipal water and sewer lines can be located to ensure that none will be severed or damaged.

OUR MISSION STATEMENT

Roseau Electric Cooperative is committed to providing its member-owners low-cost, high-quality, safe and reliable electricity with friendly, efficient and knowledgeable service.

This institution is an equal opportunity provider and employer.

BE CYBER SMART

October is National Cybersecurity Awareness Month

At a time when we are more connected than ever, being “cyber smart” is of the utmost importance. This year has already seen more than a fair share of cyberattacks and breaches, including the high-profile attacks on the Colonial Pipeline and other critical infrastructure. Furthermore, as has been underlined by these recent breaches, cyberattacks are becoming more sophisticated with more evolved bad actors cropping up each day. Luckily, there are several steps that we can take on a daily basis to mitigate risks and stay one step ahead of wrongdoers.

HERE ARE A FEW QUICK TIPS:



Do your research before downloading



Perform software updates



Check your security settings



Use strong passphrases/ password manager



Enable multi-factor authentication

MAKE A HABIT OF PRACTICING ONLINE SAFETY

Being cyber smart and maintaining stellar online hygiene is the best way to protect yourself and others from cyberattacks. No single tip is foolproof, but taken together they can make a real difference in safeguarding your online presence. Following these tips is also easy, and free. By taking preventive measures and making a habit of practicing online safety, you can decrease your odds of being hacked exponentially – and prevent lost time and money, as well as annoyance.

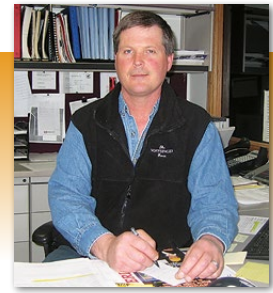
Roseau Electric Cooperative
offices will be closed Thursday,
Nov. 11, in observance of
Veterans Day

In case of outages, call
toll-free: 1-888-847-8840



From the line

Mike Millner, Line Superintendent



Where has this summer gone? When I was younger it seemed like life would stand still. Now, I can't slow it down. We have had a crazy busy summer at your Cooperative – everything from new electric services and Convert Line Changes to hanging fiber-optic cable. Our fall harvest has been coming along nicely, with only soybeans and corn left to harvest. With this busy season going on, do not forget about your surroundings. It happens several times a year where farm machinery, construction equipment, passenger vehicles and even people come in contact with our poles or power lines. In some cases, it can be quite devastating. Take the second it takes to look up before moving a grain auger or any tall equipment to make sure you are clear of all power lines. If you are one of the unfortunate people to make contact, stay in your vehicle! The lines are not dead until our crews properly ground them.

Over the summer, I have had several repeat calls on danger trees or right-of-way clearing that needs to be taken care of. Be patient, we will get to them this winter. We have very little time for right-of-way clearing in the summer months, with all of our construction workload. I hope to keep two crews mowing most of this winter. If you know of some bad spots that need our attention, give me a call and we will take care of them.

On the personal side of my life, my wife and I became grandparents this year to a beautiful little boy, Cole. We are so blessed. We haven't spent very much time at our cabin in Canada this year, due to the border being shut down and now with COVID tests required every time we cross. Oh well, we will make up for it next year. We had a great harvest in our garden this year, with close to 50 quarts of salsa and spaghetti sauce made. We gave away maybe a truck load of tomatoes. We tilled the garden last weekend, a

turning point to the end of our summer. I have several pheasant hunts planned and am very much looking forward to our kids coming home for deer season. My wife is also – she gets to spend time with my grandson, while I hunt with my daughter. Hope to run into you in my office, or you might just run into me out and about chasing those coyotes. Until we meet again... Mike



Chad Nelson & Dillion Thompson install URD.



Crews transport equipment from the Mainland to Oak Island for a line change conversion.



Justin Olson pulls away energized conductors while changing out a pole.

OCTOBER IS National Co-op Month

Roseau Electric Cooperative will be spending the month of October celebrating with our cooperative member-consumers (like you!) and reflecting on what makes cooperative communities great. To mark National Cooperative Month, we want to supply you with some fast facts about cooperatives – and why you should be proud to be a member of Roseau Electric Cooperative.

National Cooperative Month has been celebrated every October since

1964.



Electric cooperatives put their members first. On average, co-ops scored higher than all other electric companies on the 2021 American Customer Satisfaction Index assessment.



Cooperatives electrify around 56% of the U.S. landmass – that's a lot of ground to cover!



Rural electric cooperatives were born in 1935, when President Franklin D. Roosevelt created the Rural Electrification Administration (REA). Farmers used the support to band together and build electric systems for their rural communities.

Rural electric cooperatives differ from investor-owned utilities in two major ways:

1

Co-ops are not-for-profit organizations. Revenue is used to keep power flowing or returned to cooperative members.

2

Co-op decisions are made by co-op members. Members elect a board of their neighbors to help guide the co-op on their behalf.

Your cooperative is becoming more environmentally responsible every year. We now distribute 42% carbon-free energy from resources like wind and hydropower.



Across the nation, co-ops serve **42 million** people in **2,500+** counties, including **92%** of persistent poverty counties.

Roseau Electric Cooperative is part of a system of 11 cooperatives that receive electricity generated by Minnkota Power Cooperative. We partner with our co-op family to find more efficient, reliable and affordable ways to serve the region.



To learn more about your cooperative and all of the services we provide, visit roseauelectric.com.

AS PROPANE PRICES SPIKE, OFF-PEAK PROGRAM PROVIDES STABILITY

The last two years have shown consumers how volatile pricing can be – from gas to building supplies to vehicles. Most recently, propane prices have skyrocketed, leaving some people planning for a costly heating season. If you're looking for something rock solid, take advantage of an air-source heat pump on your co-op's off-peak electric heating program for your next system replacement or new home.

For the last decade, our low off-peak electricity price has remained stable, protecting you from the harsh, sometimes pocket-emptying cost swings of propane. With the off-peak electric program, you still have the choice to utilize a backup fuel source when it's very cold, and you have more control over your monthly expenses. It's the comfort and security you've been longing for.

What is the demand response – or "off-peak" – program?

The demand response program is voluntary for our members, and it has become a popular way to save on heating and cooling by reducing your exposure to variable propane prices. Participants allow our power supplier, Minnkota Power Cooperative, to remotely turn off electric heaters and other

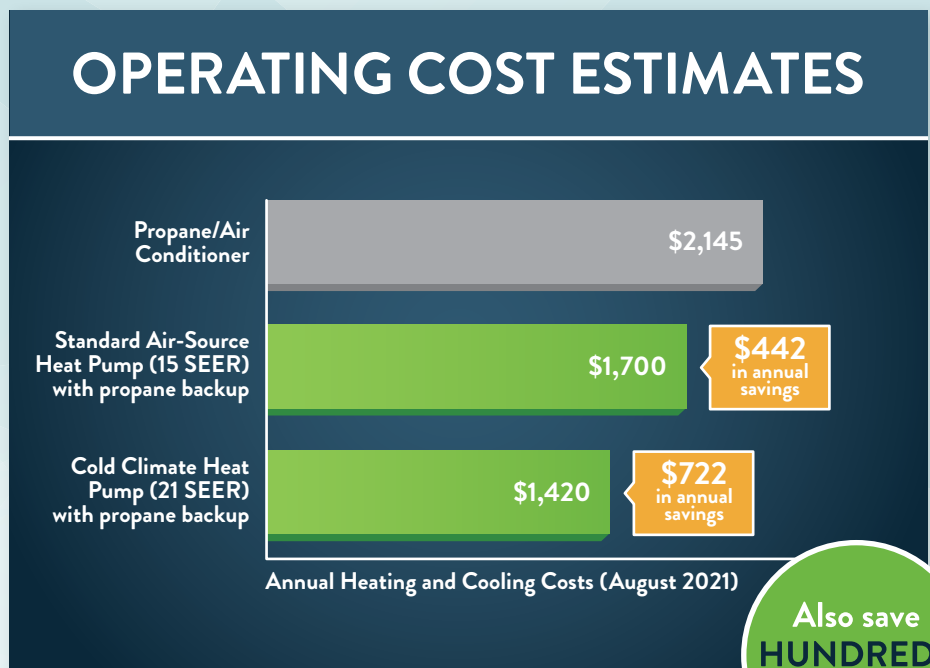
interruptible loads in exchange for a discounted retail electric rate. This enables Minnkota to more effectively manage its existing power resources and avoid adding new, costly electric generating resources.

Save money with an air-source heat pump

Because of their advanced efficiency, the cost to run an air-source heat pump (ASHP) often falls well below the cost of propane-only heat. The difference grows when propane prices rise, which can happen without much

notice. Roseau Electric Cooperative offers hundreds of dollars in rebates to help offset the cost of installing a qualified ASHP.

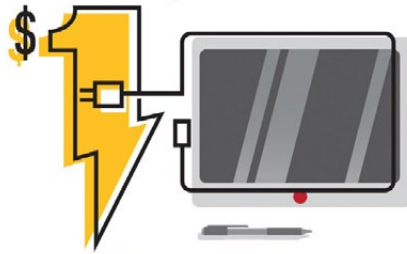
In addition to protecting you from unpredictable fuel prices, ASHPs maintain the same comfort you expect without the need to endlessly monitor fuel levels. Electric heat doesn't run out, so you can avoid more seasonal refills and messy maintenance. Plus, less reliance on fossil fuels means fewer emissions inside and outside your home.



Assumptions: Typical weather in a northern climate. Assumed heating requirements of 55,000 BTUh. Average propane price of \$1.50 per gallon. Summer electric rate of 12.7 cents per kWh. Winter off-peak electric rate of 6.6 cents per kWh. (Estimates courtesy of Bryant Heating & Cooling.)

See how your home can go off-peak by calling your Roseau Electric Cooperative energy pros at 218-463-1543 or by visiting roseauelectric.com.

What can you get for \$1?



600 hours of tablet use

You may feel guilty about the time you spend on your tablet, but you don't have to feel guilty about the power price. It only costs \$1 in electricity to use your device for around 600 hours. That's a lot of movie watching, article reading or video chatting for just a buck!

STATEMENT OF NONDISCRIMINATION

In accordance with Federal civil rights law and USDA civil rights regulations/policies, USDA, its Agencies, offices, and employees, and institutions participating in or administering USDA programs are prohibited from discriminating based on race, color, national origin, religion, sex, gender identity/expression, sexual orientation, disability, age, marital status, family/parental status, income derived from a public assistance program, political beliefs or reprisal/retaliation for prior civil rights activity, in any program or activity conducted or funded by USDA; not all bases apply to all programs; remedies and complaint filing deadlines vary by program or incident.

Persons with disabilities who require alternative means of communication for program information (e.g., Braille, large print, audiotope, American Sign Language) should contact the responsible Agency or USDA TARGET Center at 202-720-2600 (voice and TTY) or contact USDA through the Federal Relay Service at 800-877-8339. Program information may be made available in languages other than English.

To file a program discrimination complaint, complete the USDA Program Discrimination Complaint Form (AD-3027) found online at http://www.ascr.usda.gov/complaint_filing_cust.html and at any USDA office or write a letter addressed to USDA and provide all of the information requested in the form. To request a copy of the complaint form, call 866-632-9992. Submit your completed form or letter to USDA by: (1) mail: U.S. Department of Agriculture, Office of the Assistant Secretary for Civil Rights, 1400 Independence Avenue, SW, Washington, D.C. 20250-9410; (2) fax: 202-690-7442; or (3) email: program.intake@usda.gov.

USDA is an equal opportunity provider, employer and lender.

PROBLEMS PAYING YOUR ELECTRIC BILL?

Energy assistance may be available!

If you are receiving a low income or suffering from a temporary financial shortfall, the following agencies may be able to assist you with your electric bill. We urge you to contact them immediately to avoid disconnection if you feel you are eligible for aid.

Northwest Community Action

PO Box 67
Badger, MN 56714-0067
(218) 528-3258 or 800-568-5329
nwcaa.org

Bi-County Cap, Inc.

6603 Bemidji Ave. N
Bemidji, MN 56601-8669
(218) 751-4631

UNITED STATES POSTAL SERVICE® Statement of Ownership, Management, and Circulation
POSTAL SERVICE® (All Periodicals Publications Except Requester Publications)

1. Publication Title: **VOLTS & VIEWS**
2. Publication Number: **6 6 3 - 4 2 0**
3. Filing Date: **10/01/2021**
4. Issue Frequency: **12 Times Year**
5. Number of Issues Published Annually: **12**
6. Annual Subscription Price: **.50cents**
7. Complete Mailing Address of Known Office of Publication (Not printer) (Street, city, county, state, and ZIP+4®):
PO Box 100 1107 3rd Street NE Roseau MN 56751-0100
8. Complete Mailing Address of Headquarters or General Business Office of Publisher (Not printer):
PO Box 100 Roseau MN 56751-0100
9. Full Names and Complete Mailing Addresses of Publisher, Editor, and Managing Editor (Do not leave blank):
Publisher (Name and complete mailing address):
Roseau Electric Cooperative Inc PO Box 100 Roseau MN 56751-0100
Editor (Name and complete mailing address):
Jeremy Lindemann PO Box 100 Roseau MN 56751-0100
Managing Editor (Name and complete mailing address):
Jeremy Lindemann PO Box 100 Roseau MN 56751-0100
10. Owner (Do not leave blank. If the publication is owned by a corporation, give the name and address of the corporation immediately followed by the names and addresses of all stockholders owning or holding 1 percent or more of the total amount of stock. If not owned by a corporation, give the names and addresses of the individual owners. If owned by a partnership or other unincorporated firm, give its name and address as well as those of each individual owner. If the publication is published by a nonprofit organization, give its name and address.):
Full Name Complete Mailing Address
Roseau Electric Cooperative Inc PO Box 100 Roseau MN 56751-0100
11. Known Bondholders, Mortgagees, and Other Security Holders Owning or Holding 1 Percent or More of Total Amount of Bonds, Mortgages, or Other Securities. If none, check box: None
Full Name Complete Mailing Address
12. Tax Status (For completion by nonprofit organizations authorized to mail at nonprofit rates) (Check one)
The purpose, function, and nonprofit status of this organization and the exempt status for federal income tax purposes:
 Has Not Changed During Preceding 12 Months
 Has Changed During Preceding 12 Months (Publisher must submit explanation of change with this statement)
PS Form 3526, July 2014 (Page 1 of 4) www.usps.com PSN: 7530-01-000-0001 PRIVACY NOTICE: See our privacy policy on www.usps.com

13. Publication Title: **VOLTS & VIEWS**
14. Issue Date for Circulation Data Below: **September 2021**
15. Extent and Nature of Circulation
Newsletter
a. Total Number of Copies (Net press run): **5536 5071**
b. Paid Circulation (By Mail and Outside the Mail):
(1) Mailed Outside-County Paid Subscriptions Stated on PS Form 3541 (include paid distribution above nominal rate, advertiser's proof copies, and exchange copies): **1581 1587**
(2) Mailed In-County Paid Subscriptions Stated on PS Form 3541 (include paid distribution above nominal rate, advertiser's proof copies, and exchange copies): **3870 3845**
(3) Paid Distribution Outside the Mails Including Sales Through Dealers and Carriers, Street Vendors, Counter Sales, and Other Paid Distribution Outside USPS
(4) Paid Distribution by Other Classes of Mail Through the USPS (e.g., First-Class Mail®)
c. Total Paid Distribution (Sum of 15b (1), (2), (3), and (4)): **5451 5432**
d. Free or Nominal Rate Distribution (By Mail and Outside the Mail):
(1) Free or Nominal Rate Outside-County Copies Included on PS Form 3541
(2) Free or Nominal Rate In-County Copies Included on PS Form 3541
(3) Free or Nominal Rate Copies Mailed at Other Classes Through the USPS (e.g., First-Class Mail®)
(4) Free or Nominal Rate Distribution Outside the Mail (Carriers or other means): **75 75**
e. Total Free or Nominal Rate Distribution (Sum of 15d (1), (2), (3) and (4)): **75 75**
f. Total Distribution (Sum of 15c and 15e): **5526 5507**
g. Copies not Distributed (See Instructions to Publishers #4 (page #3)) **10 10**
h. Total (Sum of 15f and g): **5536 5517**
i. Percent Paid (15c divided by 15f times 100): **99 99**
* If you are claiming electronic copies, go to line 16 on page 3. If you are not claiming electronic copies, skip to line 17 on page 3.

UNITED STATES POSTAL SERVICE® Statement of Ownership, Management, and Circulation
POSTAL SERVICE® (All Periodicals Publications Except Requester Publications)

16. Electronic Copy Circulation: I certify that 95% of all my distributed copies (electronic and print) are paid above a nominal price.
Average No. Copies Each Issue During Preceding 12 Months No. Copies of Single Issue Published Nearest to Filing Date
a. Paid Electronic Copies
b. Total Paid Print Copies (Line 15c + Paid Electronic Copies (Line 16a))
c. Total Paid Distribution (Line 15c + Paid Electronic Copies (Line 16a))
d. Percent Paid (Both Print & Electronic Copies) (16b divided by 15c x 100)
17. Publication of Statement of Ownership:
 If the publication is a general publication, publication of this statement is required. Will be printed in the **October 2021** issue of this publication. Publication not required.
18. Signature and Title of Editor, Publisher, Business Manager, or Owner: **Jeremy Lindemann Editor** Date: **10/01/2021**
I certify that all information furnished on this form is true and complete. I understand that anyone who furnishes false or misleading information on this form or who omits material or information requested on the form may be subject to criminal sanctions (including fines and imprisonment) and/or civil sanctions (including civil penalties).
PS Form 3526, July 2014 (Page 2 of 4) PRIVACY NOTICE: See our privacy policy on www.usps.com

Be Fire Prevention Smart Don't Get Burned!

Electricity usually makes life easier by powering kitchen appliances, gadgets and electronics we use for entertainment. However, that same electricity contains the potential to destroy homes and take lives. Electric fires are more destructive than any other type of fire, and they are twice as deadly. Safe Electricity has the following information to help you keep your electric system safe.

- Consider getting an electric inspection of your home, especially if it is an older home, or you have never had an inspection.
- If an electrical fire starts in your home, do not use water to extinguish it. Water conducts electricity, and you could get an electric shock. Use an extinguisher that is approved for use on electric fires.
- Flickering lights and warm, cracked or sparking outlets all indicate electric problems.
- If circuits trip, fuses blow or someone gets a shock, your home has an electric problem. Get an electric inspection.
- Do not overload outlets, use an extension cord as a permanent wiring solution, or use light bulbs that are not rated for the socket.
- Contact an electrician about installing an arc fault circuit interrupter (AFCI). An AFCI monitors the flow of electricity in your home. If the flow of electricity is irregular and could cause a fire, the AFCI shuts off electricity. An AFCI costs around \$35, plus the cost of professional installation. The cost also depends on the size of your home and how many circuit breakers you have.
- Inspect electric plugs and cords annually. If they are frayed or cracked, repair or replace them. Do not place cords under rugs, or staple or nail them to the wall.

Source: safeelectricity.org

member connection

ENERGY TIP

Cooler temps are here! Is your home's heating system ready? Remember to replace furnace filters once a month or as recommended. If you heat your home with warm-air registers, baseboard heaters or radiators, remember to clean them regularly to increase efficiency.

Source: energy.gov



DATES TO REMEMBER

October 19

Co-op Day – Serving lunch from 11 a.m. to 2 p.m.

October 21

Electric bill is due

November 7

Daylight Saving Time ends – "Fall back" one hour

November 11

Veterans Day – Office is closed

OFFICE HOURS

Monday-Friday

8 a.m. – 4:30 p.m.

Phone 218-463-1543

AFTER HOURS/OUTAGE NUMBER

Toll-free 1-888-847-8840

(main outage call center)

CALL BEFORE YOU DIG

1-800-252-1166 or 811

PAY BY PHONE

1-877-999-3412

SMARTHUB

<https://roseaelectric.smarthub.coop/>

WEBSITE

www.roseaelectric.com



LIKE US ON FACEBOOK
TO STAY UP TO DATE!

OPERATING STATISTICS

	Monthly		Year to Date	
	August 2020	August 2021	August 2020	August 2021
Members	6,557	6,612	6,557	6,612
kWh purchased	11,315,481	10,833,546	102,514,397	102,032,462
% change		-4.26%		-0.47%
Revenue	1,503,065	1,429,446	12,593,226	12,128,281
Cost of power	867,760	861,568	7,542,228	7,399,100
Other expenses	473,946	578,517	4,073,777	4,458,481
Operating margins	161,359	(10,639)	977,221	270,700
Nonoperating margins	18,880	20,944	115,841	122,041
Patronage dividends	-	-	25,260	179,055
Total margins	180,239	10,305	1,118,322	571,796

CARING FOR THE COMMUNITY

one cat rescue at a time

Concern for Community is an essential co-op principle that Roseau Electric Cooperative believes in. That's why on the afternoon of Sept. 13, our lineman, Chad Gregerson, went above and beyond to rescue a cat named Daisy. She had been stuck up in a tree for over 10 hours and, thanks to the hard work of Chad, was eventually returned safely to her family.

Pictured are Hal & Jet Brellenthin along with the hero, REC's lineman Chad Gregerson.

