

VOLTS & VIEWS



Did you know that cooperatives power 56% of our nation's landmass, serving 42 million people in 48 states? Rural electric co-ops are the backbone of our economy, especially in states like Minnesota, where many consumers live in rural areas. Electricity is vital to enhancing our communities, small and large – and you can be a part of it with a career at a cooperative.

Not sure what you or your recently graduated student would do in the energy industry? The options are nearly endless! Electric co-ops offer diverse career tracks, both at your local distribution utility – Roseau Electric Cooperative – and at the regional co-ops that generate and transmit electricity, like Minnkota Power Cooperative.

Here is just a small segment of the opportunities:

Engineers – From electrical to civil to mechanical and beyond, co-ops need a wide array of these technical innovators.

Environmental Scientists – Co-ops take environmental stewardship to heart, and this team helps maintain the highest levels of land, water and air quality.

Lineworkers – Day or night, these height-defying heroes make sure power lines are well maintained and working properly.

Information Technology Specialists – Whether it's

PC networking, power system operating or cybersecurity monitoring, IT experts are vital to the electric industry.

Project Managers – Cooperatives have to juggle several projects at once to keep power flowing, so these planners make sure things stay on budget and on schedule.

Power Plant Technicians – These industry pros ensure the machinery of generating energy is running smoothly, safely and efficiently.

Member Services Representatives – If members have questions about their electricity, these are the friendly voices who guide them to savings and efficiency.

Electricians – You can't have electricity without electricians, so these folks assemble all of the connections that get power from point A to point B.

Business Professionals (Human Resources, Accounting, Communications, etc.) – Cooperatives are filled with people who run numbers, write newsletters and hire new employees to round out the cooperative team.

A career with an electric co-op is rewarding in many ways. You get the satisfaction of knowing you're part of a not-for-profit organization that prioritizes reliable member service. Plus, employees enjoy competitive salaries and benefit packages to ensure individuals and families are supported along the way.

Visit careers.electric.coop

VOLTS & VIEWS

JUNE 2021 – Vol. 66, No. 6

OFFICIAL PUBLICATION OF

Roseau Electric Cooperative, Inc.

1107 3rd Street N.E.

The Volts & Views (USPS-663420) is published monthly by Roseau Electric Cooperative, Inc., P.O. Box 100, Roseau, MN 56751. Periodicals postage paid at Roseau, MN. POSTMASTER: Send address changes to ROSEAU ELECTRIC COOPERATIVE, INC., P.O. Box 100, Roseau, MN 56751.

OFFICERS AND DIRECTORS

Chairman Mark Sax
Vice Chairman Jim Hallan
Secretary-Treasurer Wes McFarlane
Directors . . Roger Amundson, Brian Grafstrom
Shawn Gust, Dale Moser,
Mike Wahl, Ed Walsh
Tracey Stoll *General Manager*
Ryan Severson *Assistant Manager*
Mike Millner *Line Superintendent*
Jeremy Lindemann *Member Services*
Alex McMillin *Office Manager*

Regular Business Hours: 8 a.m. - 4:30 p.m.

Phone (218) 463-1543

OUTAGE CALLS:

Toll-Free 1-888-847-8840

MINNESOTA STATE ELECTRICAL INSPECTORS

7 a.m. - 8:30 a.m. (Mon. thru Fri.)

*Northwest Angle, Kittson, Marshall,
Pennington and Roseau Counties
and parts of Beltrami County:*

Ronald Ditsch – 218-779-6758

Lake of the Woods County:

Curt Collier – 218-966-5070

Inspector list is subject to change at any time.

The State of Minnesota has high wiring standards, which are in the best interest of you and your family or business. Improper wiring can damage your home, your property and equipment, and injure or kill the people you love. Currently, the state does allow homeowners to do their own residential wiring; however, it is critical that the current electrical code is followed. Any time you or an electrician does wiring or other electrical work at your home or farm, Minnesota state law requires a state wiring inspector to conduct a proper inspection of the work. A rough-in inspection must be made before any wiring is covered. A final inspection is also required. For more information visit dli.mn.gov and go to the electrical page.

Gopher State One Call
1-800-252-1166 or 811
www.gopherstateonecall.org

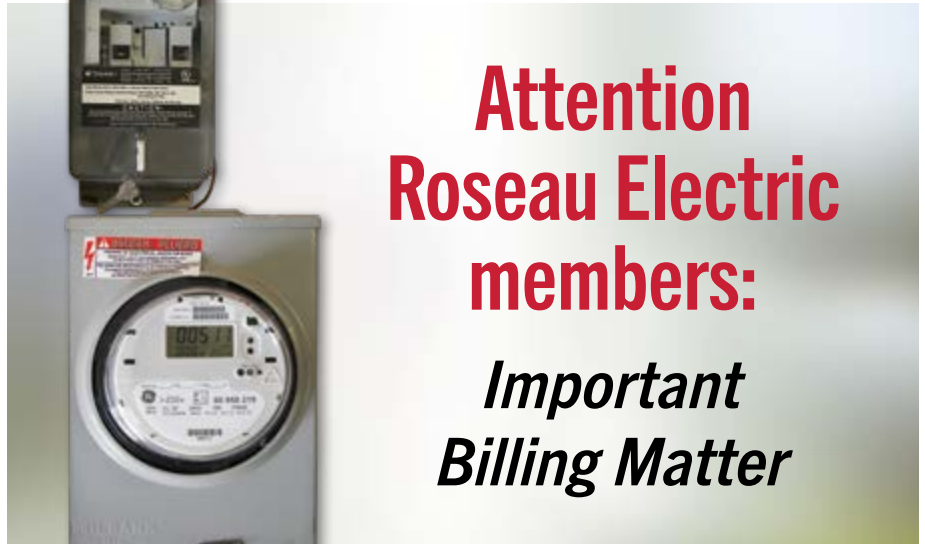


Anyone who plans to dig is required by law to notify the state of their intentions at least 48 hours in advance. All digging requires the 48-hour notification so that buried telephone line, television cable, pipelines, utility electrical lines, municipal water and sewer lines can be located to ensure that none will be severed or damaged.

OUR MISSION STATEMENT

Roseau Electric Cooperative is committed to providing its member-owners low-cost, high-quality, safe and reliable electricity with friendly, efficient and knowledgeable service.

This institution is an equal opportunity provider and employer.



Attention Roseau Electric members:

Important Billing Matter

OFF-PEAK METER CHANGEOUT

Roseau Electric is upgrading the Automatic Meter Reading (AMR) system due to a software end-of-life announcement from the meter manufacturer. Roseau Electric will not be able to receive readings from the off-peak heat meter unless this meter is updated.

***If you have not contacted Roseau Electric,
please call REC at 1-218-463-1543
to schedule your meter changeout
to continue receiving the off-peak credit.***

***Heat meters in the Northwest Angle
do not need to be changed.***



**Our offices will be closed
Monday, July 5, in observance of
Independence Day**

In case of an outage, call 1-888-847-8840.

From the line

Mike Millner, Line Superintendent



We have had one of the best springs for planting crops and gardens in many years. My garden is planted and coming along nicely. We have even eaten a few meals of fresh asparagus from our garden.

I love this time of the year, but it is also very busy. We have been building out our fiber project, adding new services and converting line changes. Some days we don't know what direction to go! With this construction and agriculture season in full swing, let's make it an electrically safe one. Be aware of your surroundings at all times.

1. Look up when pulling or setting up augers or moving any equipment.
2. If you hit a power line or pole, stay in your vehicle until our crews arrive and tell you it is safe to exit. Do not touch anything outside of the vehicle. Always assume the line is "live."

3. If it is too dangerous to stay in the vehicle due to fire or other dangers, jump clear of it without touching the vehicle and the ground at the same time. Land with feet together and hop or shuffle away while still keeping both feet together.
4. Report any damage to our power line, but stay clear until we arrive.
5. Never use a generator to feed your meter box unless it is a "double throw." You could back-feed high voltage on our power line, possibly hurting or killing one of my lineworkers.
6. Never touch a tree or attempt to cut it down if it is close to a power line. We will gladly come out and remove it safely.
7. Call Gopher State One Call before you shovel, trench, plow drain tile or do any excavation more than a few inches deep.

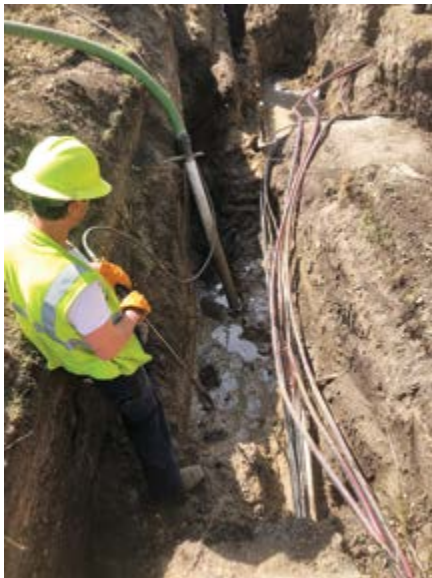
The number to call is 1-800-252-1166 or 811 or go online to www.gopherstateonecall.org, which is what I prefer. The site is very user friendly, even if you are not computer savvy.

With more people getting vaccinated, I hope life can be more normalized. I'm really hoping for the border to open soon and to be able to catch myself a limit of walleyes at Buffalo Bay, Manitoba, and maybe spend a few nights at our cabin.

My office is always open. Stop on in to share any of your concerns or new projects that might need our assistance. My cell is 218-689-3816. Stay safe and healthy, but don't forget to live life to the fullest. We are only here for a short time.

By the way, I became a grandpa. My daughter, Ashley, and her husband had a little boy, Cole David Michael Pierre. I have quite a few adventures to share with that little guy. May we meet on the lake or someplace else fun.

Mike



Jedd VonEnde exposes high voltage power lines and gas lines at the Roseau School.



Ross Nelson and Chad Nelson working on a line change for the Roseau school expansion.

DIGGING SOON?



ALWAYS CALL BEFORE YOU DIG

Visit www.call811.com for more information.



(Left) John Vojacek displays the Verve 3 Trek, one of the best-selling e-bikes at Scheels. (Above) A close-up look at an e-bike's removable battery pack.

AN E-BIKE FOR EVERYONE



Have you been curious about electric bicycles (or e-bikes) cruising around your community? If you're wondering how they work or why you would even want one, you're in good company – we've heard the same questions from our members. We decided to check in with the Grand Forks Scheels store to learn more about this newly trending technology.

John Vojacek, Scheels service shop manager and e-bike expert, says his store has carried battery-powered bikes for more than six years. However, they've become more mainstream in the past year or so as people begin experiencing the wide range of benefits for every age and activity level. Vojacek loves hearing stories from customers whose lives have been enhanced by a little electric pedal assistance.

"One gentleman who winters in Arizona, he would sit on his porch and every morning he'd watch a bike group go by – just a simple coffee ride," he recounted. "He said there was no way he could keep up, but now with an e-bike, he can ride with that group down to the corner to get coffee. It's exciting, on our side, to know that we can help folks fit in or keep up."

E-bikes have three levels of clas-

sification. Class 1 e-bikes give electric pedal assist only, with the motor simply amplifying the rider's pedal power up to 20 mph. Class 2 e-bikes have the same 20-mph cutoff, but they are also allowed to have a throttle, allowing the motor to fully propel the rider forward. Class 3 are higher-performing e-bikes, with a drive system that will assist pedaling up to 28 mph.

Scheels usually stocks Class 1 and Class 3 models, with prices ranging from around \$1,500 for the Electra Townie Go up to \$3,150 for the popular Verve 3 Trek. There are models on the market that are more expensive (some up to \$7,000 or more), and there are also some that are less. However, Vojacek urges potential buyers to seek out a store with an e-bike-trained service staff (like Scheels) or a knowledgeable independent bike shop to ensure you are purchasing a safe and durable bike with a UL-listed battery.

"E-bikes in Europe are huge, and have become one of the main ways people get around. That technology is now making its way over here, and they already have all of the kinks worked out. They're super reliable and super easy to use," he said.

E-bike batteries can typically be

charged from depleted to full power in three hours, giving 30-80 miles in assisted range, depending on performance setting. Some daily commuters (who arrive to work sweat-free) will plug in their bike or battery pack at their desk and have a full charge for the ride home. The effective range of the battery does decrease slightly in colder temperatures, but the batteries are water resistant for off-roading experiences that take a rider through puddles or rain.

"If you've never ridden one before, come in and take one for a test ride. We always see guests with a 'perma-grin' when they get back, because they're so much fun to ride," Vojacek said, adding that they are a great way to work toward health goals. "It makes it enjoyable to get out and ride. If you enjoy the activity, you're going to do it a lot more than if it's a chore."

Our Scheels expert doesn't yet have an e-bike at home – but he'll soon be one of the many taking a seat. "I have two young boys that are into racing BMX right now. When they get into high school, there's no way I'm going to be able to keep up with them on a bike, so an e-bike is going to be my jam," he said with a chuckle.

ENERGY EFFICIENCY INCENTIVES



Business incentives for retrofit and new construction:

- LED lighting and controls
- HVAC and geothermal
- Chillers and refrigeration
- Food service equipment
- VFD motors

Building a New Home?

Roseau Electric offers a **FREE electric water heater:**

- Large capacity: 80- or 100-gallon
- Must be on “off-peak” – under the daily cycled load group category
- Incentives are excluded from the free water heater program

Sample 2021 PowerSavers/Powerful Value/REC Residential Electric Incentives for Members (Incentive shall not exceed 50% of project costs)

Equipment	Specifications	Incentive
LED Screw-in Bulb	40-60W equivalent incandescent. ENERGY STAR®-recommended.	50% of the purchase price up to \$2/bulb
LED Screw-in Bulb	65W or greater equivalent incandescent. ENERGY STAR®-recommended.	50% of the purchase price up to \$4/bulb
LED Fixture	Complete fixture or replacement kit. ENERGY STAR®-recommended.	50% of the purchase price up to \$4/fixture
LED Outdoor Fixture	Dusk to dawn operation required. DesignLights™ Consortium or ENERGY STAR®-recommended.	50% of the purchase price up to \$10/fixture
Clothes Washer	Must be ENERGY STAR®-approved.	\$25/unit
Clothes Dryer	Must be ENERGY STAR®-approved.	\$25/unit
Refrigerator or Freezer	Must be ENERGY STAR®-approved.	\$25/unit
Recycle Old Refrigerator or Freezer	Recycling receipt required.	\$50/unit
Electric Water Heater <ul style="list-style-type: none"> • 55 gallon or less • 80-85 gallon • 100 gallon or greater • Conversion from gas to electric 	Must be on demand response program.	\$125/\$125/\$100/unit \$200/\$200/\$300/unit \$300/\$300/\$300/unit \$250/unit
Programmable Thermostat		50% of the purchase price up to \$25
ENERGY STAR Smart Thermostat	Wi-Fi connectivity required.	50% of the purchase price up to \$50
Tuneup for Central AC	Not valid on window AC units. Checklist on form must be completed with application.	\$25/unit
Tuneup for Air-Source Heat Pump or Mini-Split Ductless Air-Source Heat Pump	Checklist on form must be completed with application.	\$25/unit
Supplemental Heating Source Air-Source Heat Pump	Must modulate to allow ENERGY STAR-rated air-source heat pump to operate down to 5° F and be on load control.	\$500/unit
Air-Source Heat Pump or Mini-Split/Ductless ASHP	Less than 17 SEER Equal to or greater than 17 SEER	\$300/\$150/\$50/ton \$500/\$150/\$50/ton
Furnace (Air Handler) with ECM Blower	Furnace with an ECM blower. Retrofit applications only.	\$100/unit
Ground-Source Heat Pump Open Loop less than 135,000 BTUH @ 59° F	16.2 EER/3.6 COP Maximum incentive \$2,500/home.	\$200/ton
Ground-Source Heat Pump Closed Loop less than 135,000 BTUH @ 77° F	14.1 EER/3.3 COP Maximum incentive \$5,000/home.	\$400/ton

Insulation and air-sealing incentives for existing homes are available. See Roseau Electric for details.

All incentives, criteria and guidelines for residential and business members can be found at **www.roseauelectric.com** or by calling **888-847-8840**



Grant Application Deadline Aug. 31, 2021

To be considered at the September 2021 meeting, grant applications must be received by **Aug. 31, 2021**. Grant applications are available at the REC office or by visiting our website at www.roseauelectric.com.

Problems paying your electric bill?

Energy assistance may be available!

If you are receiving a low income or suffering from a temporary financial shortfall, the following agencies may be able to assist you with your electric bill. We urge you to contact them immediately to avoid disconnection if you feel you are eligible for aid.

Northwest Community Action
 PO Box 67
 Badger, MN 56714-0067
 (218) 528-3258 or 800-568-5329
northwestcap.org

Bi-County Cap, Inc.
 6603 Bemidji Ave. N
 Bemidji, MN 56601-8669
 (218) 751-4631

FREE AND EASY WAYS TO SAVE ENERGY

Here are 10 easy, no-cost ways to save energy this summer:



1. Close or lower window coverings during the heat of the day



2. Set your thermostat a few degrees higher



3. Take cooler showers (this feels better in the summer, anyway)



4. Use countertop appliances or a microwave instead of your oven



5. Better yet, grill or smoke food outdoors



6. Unplug that extra fridge, especially older, inefficient models (they have to work even harder in a hot garage)



7. Optimize your programmable thermostat's features (around 40% of homeowners never program them)



8. Check the airflow around windows and doors (add weather stripping if needed)



9. Unplug all chargers and electronics before leaving the house

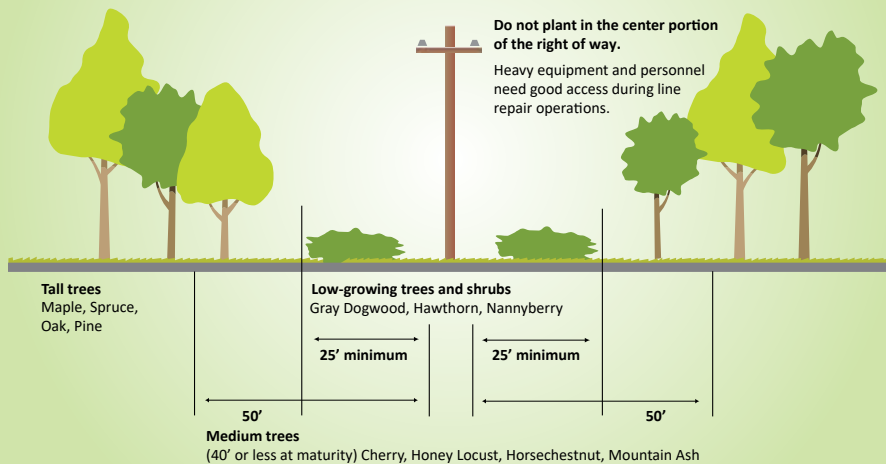


10. SHUT THE FRONT DOOR (don't air condition the outdoors)

Safe Electricity.org® Learn more at:

Plan before you plant

Minimize tree-related outages and ensure reliable electric service for the future by choosing the right species of trees. Consider the trees' mature height and crown spread, especially when planting adjacent to overhead power lines.





Congratulations

to the 2021 Cooperative Knowledge
\$500 Scholarship Winners



Thor Anderson
Greenbush High School



Elizabeth Danielson
Roseau High School



Gracie Lunsetter
Grygla High School



Isabella Monsrud
Badger High School

Winners of the \$50 drawings

Erika Howell
Mariah Christian
Hailey Knutson
Julia Braaten

*Thank you to all the seniors
who participated. Best wishes
in your future endeavors!*

member connection

ENERGY TIP

Home cooling makes up a large portion of your energy bills. Try to keep the difference between the temperature of your thermostat setting and the outside temperature to a minimum. The smaller the difference, the more energy you will save.

DATES TO REMEMBER

- June 14** – Flag Day
- June 20** – Father's Day
Summer begins
- June 21** – Electric bill is due



Looking ahead:

Roseau County Fair
July 18-23

Stop by our booth
starting the evening of July 20.
roseaucountyfair.com

OFFICE HOURS

Monday-Friday 8 a.m. – 4:30 p.m.
Phone 218-463-1543

AFTER HOURS/OUTAGE NUMBER

Toll-free 1-888-847-8840
(main outage call center)

CALL BEFORE YOU DIG

1-800-252-1166 or 811

PAY BY PHONE – 1-877-999-3412

SMARTHUB

<https://roseauelectric.smarthub.coop/>

WEBSITE

www.roseauelectric.com



LIKE US ON **FACEBOOK**
TO STAY UP TO DATE!

OPERATING STATISTICS

	Monthly		Yearly	
	April 2020	April 2021	April 2020	April 2021
Members	6,524	6,553	6,524	6,553
kWh purchased	12,324,567	11,224,229	60,064,533	57,898,756
% change		-8.93%		-3.61%
Revenue	1,532,464	1,360,013	6,924,203	6,702,406
Cost of power	914,471	882,325	4,201,356	4,074,788
Other expenses	485,804	498,461	2,106,579	2,201,508
Operating margins	132,189	(20,773)	616,268	426,110
Nonoperating margins	9,748	23,851	53,219	60,648
Patronage dividends	-	179,055	-	179,055
Total margins	141,937	182,133	669,487	665,813

IT'S
FAIR TIME

IN ROSEAU COUNTY!

July 18-23

Visit us at our booth
at the fair starting

Tuesday, July 20!

Sign up for door prizes
and receive a free gift.

See you there!

For complete event details,
premium lists and schedules,
visit roseaucountyfair.com

