

# VOLTS & VIEWS






## When your AC croaks...

## call the heat pump folks!

You've had your trusty air conditioner for years, and it hasn't let you down. **YET.**

When the time comes – and it will – for a more efficient, more versatile, money-saving replacement, Roseau Electric Cooperative recommends researching an air-source heat pump (ASHP) or a ductless mini-split heat pump. These modern technologies will not only help you fight the Minnesota summer heat, but they'll also warm you up when the state transitions to its famously cold winters. Show us an air conditioner that can do that!

### TECHNOLOGY BENEFIT BREAKDOWN

	 AIR CONDITIONER	 ASHP	 MINI-SPLIT HEAT PUMP
<b>How it works</b>	Absorbs heat inside and expels it from your home, returning the cooled air into the home	Works like an air conditioner in the summer, but creates the reverse process to warm your home in the winter (throughout the home, using ductwork)	Works like an air conditioner in the summer, but creates the reverse process to warm your home in the winter (zones of the home, no ductwork needed)
<b>Versatility</b>	Only used during the warm months when home cooling is needed	Offers heating and cooling through every season	Offers heating and cooling through every season, can be installed in any room or space
<b>Efficiency</b>	Efficiency differs, but some wall-mounted units only provide spot cooling and air can leak through seals	Highly efficient technology, with no fear of air leaks	Highly efficient technology, with no fear of air leaks
<b>Off-peak program qualified</b>	No	Yes (nearly half of standard electric rate with voluntary enrollment)	Yes (nearly half of standard electric rate with voluntary enrollment)
<b>Co-op rebate available</b>	No	Yes (up to \$700 per ton)	Yes (up to \$700 per ton)

**BONUS WINTER BENEFIT:** Electric ASHP heating is much *more efficient* and *cost effective* than fuel heat technology, delivering up to three times more energy than the electricity it uses. Plus, stable electric rates will help you protect yourself from ever-volatile propane and gas prices.

Call the energy experts at Roseau Electric Cooperative to find the heating & cooling system that works best for your home!

# VOLTS & VIEWS

MAY 2022 – Vol. 67, No. 5

OFFICIAL PUBLICATION OF

**Roseau Electric Cooperative, Inc.**

1107 3rd Street N.E.

The Volts & Views (USPS-663420) is published monthly by Roseau Electric Cooperative, Inc., P.O. Box 100, Roseau, MN 56751. Periodicals postage paid at Roseau, MN. POSTMASTER: Send address changes to ROSEAU ELECTRIC COOPERATIVE, INC., P.O. Box 100, Roseau, MN 56751.

## OFFICERS AND DIRECTORS

Chairman . . . . . Mark Sax  
 Vice Chairman . . . . . Jim Hallan  
 Secretary-Treasurer . . . . . Mike Wahl  
 Directors . . . . . Brian Grafstrom, Shawn Gust,  
 Dale Moser, Joe Tesarek, Ed Walsh  
 Tracey Stoll . . . . . General Manager  
 Ryan Severson . . . . . Assistant Manager  
 Mike Millner . . . . . Line Superintendent  
 Jeremy Lindemann . . . . . Member Services  
 Alex McMillin . . . . . Office Manager

Regular Business Hours: 8 a.m. - 4:30 p.m.  
 Phone (218) 463-1543

### OUTAGE CALLS:

Toll-Free 1-888-847-8840

## MINNESOTA STATE ELECTRICAL INSPECTORS

7 a.m. - 8:30 a.m. (Mon. thru Fri.)

Northwest Angle, Kittson, Marshall,  
 Pennington and Roseau counties  
 and parts of Beltrami County:

**Ronald Ditsch – 218-779-6758**

Lake of the Woods County:

**Curt Collier – 218-966-5070**

Inspector list is subject to change at any time.

The State of Minnesota has high wiring standards, which are in the best interest of you and your family or business. Improper wiring can damage your home, your property and equipment, and injure or kill the people you love. Currently, the state does allow homeowners to do their own residential wiring; however, it is critical that the current electrical code is followed. Any time you or an electrician does wiring or other electrical work at your home or farm, Minnesota state law requires a state wiring inspector to conduct a proper inspection of the work. A rough-in inspection must be made before any wiring is covered. A final inspection is also required. For more information visit [dli.mn.gov](http://dli.mn.gov) and go to the electrical page.

**Gopher State One Call**  
**1-800-252-1166 or 811**  
[www.gopherstateonecall.org](http://www.gopherstateonecall.org)



Anyone who plans to dig is required by law to notify the state of their intentions at least 48 hours in advance. All digging requires the 48-hour notification so that buried telephone line, television cable, pipelines, utility electrical lines, municipal water and sewer lines can be located to ensure that none will be severed or damaged.

### OUR MISSION STATEMENT

*Roseau Electric Cooperative is committed to providing its member-owners low-cost, high-quality, safe and reliable electricity with friendly, efficient and knowledgeable service.*

*This institution is an equal opportunity provider and employer.*

# TAKE CHARGE OF YOUR FUEL COSTS

*An electric vehicle can protect you from rising gas prices*

We've all felt it this year – that pain that comes with pumping gas at around \$4 per gallon. The smallest cars need \$40 of fuel for a full tank. Larger, 36-gallon gas tanks will cost upward of \$140-150 to fill. It's even costlier for the large trucks and vehicles that deliver food and necessities to our local communities.

With uncertainty surrounding future fuel prices, adding an electric vehicle (EV) to your family's fleet is a smart idea. Electricity prices have been

relatively stable in recent years and are much lower than gasoline prices – even at \$2 a gallon. Your electric cooperative's supply of electricity comes from home-grown resources, meaning you'll be supporting energy workers across the region and in your community.

Filling up your EV on your cooperative's off-peak program costs less than the average fast food meal. Think we're kidding? Let's show you the math.

VEHICLE & POWER SOURCE	COST TO DRIVE 225 MILES
Gas-powered vehicle (18 mpg, \$4 a gallon)	\$50.00
Gas-powered vehicle (25 mpg, \$4 a gallon)	\$36.00
Gas powered vehicle (35 mpg, \$4 a gallon)	\$25.70
<b>Standard electric pickup truck on off-peak home charging rate (\$0.07/kWh)</b>	<b>\$7.00</b>
<b>Standard electric car on off-peak home charging rate (\$0.07/kWh)</b>	<b>\$4.76</b>

When members sign up voluntarily for the off-peak EV program, they simply install their 240-volt home charger on an off-peak meter and charge the vehicle when electric demand is low. This is often in the overnight hours, when the EV is already tucked away in the garage. Drivers can plug in with a nearly depleted battery and wake up in the morning fully charged for the day.

To learn more about how installing a home charger on Roseau Electric Cooperative's off-peak program will pay out, call us at **218-463-1543** or visit **ValueofElectricity.com**.

# From the line

Mike Millner, Line Superintendent



Spring is finally here! Planting will soon be in full swing. I know this is a busy time, but please keep your head in the game. Watch out for overhead power lines, poles and underground equipment. If you accidentally hit something, call us right away.

Looking forward to another busy construction season, I am thankful to have a very competent line crew. The line crew will be busy with new services, line changes and fiber construction. They are also ready to restore power after any summer storms that come our way.

On a personal note, my wife and I recently traveled to the Twin Cities to celebrate our grandson's first birthday. He is such a smiley kid. What a ham...he must take after me!

One of my faithful readers passed on a quote (author unknown) to share with you: "When you lose everything in life, that's when you find out who you are."

Until we meet again...Mike

## 2022 Annual Meeting Prizes

### \$500 Credit

Kermit Jensen

### \$100 Credits

Nicholas Gerulli

Tim Bialke

### \$50 Credits

Jerome Whitlow

Maxine Skoglund

Kimberly Borreson

David Wensloff

Dennis Kompelien

Kreg Hovorka

Lyle Roseen

Mark Beito

Jerome Greffthen

Wayne Roseen

### Electric Appliances

### Winners

Lefse griddle

Dale Billberg

Griddle

Carmen Solom

Crockpot

Loretta Goos

Can opener

Rhoda Gust

Skillet

Collin Jensen

## SPRING INTO SAFETY

Spring is in the air and that means more than just a change of season for farmers. During the busy planting season, follow these eight safety tips:



### TRANSPORT SAFELY

Ensure equipment is compliant with agriculture road and travel safety rules



### SHARE SAFETY TIPS

Teach anyone working or doing business on your farm about electrical hazards



### ENCOURAGE YOUNG WORKERS

Be sure to match age and ability level with each chore



### BE CLEAR

Explain where the "back 80" or Smith field is; not everyone may know how to get there



### WRITE IT DOWN

Keep directions (with proper road and farm ground names) at home, in the shop and in cabs



### LOOK AROUND

Inspect your space and look for hazards before you start planting



### EVALUATE PROCEDURES

Consider new safety precautions you can implement, such as lockout/tagout



### MEET AND DISCUSS

Conduct morning safety meetings to brief everyone on the day and talk about potential hazards

Sources: Rural Mutual Insurance Co., farmprogress.com

Safe Electricity.org



# VEGETATION MANAGEMENT

## A responsible approach to safe, reliable power

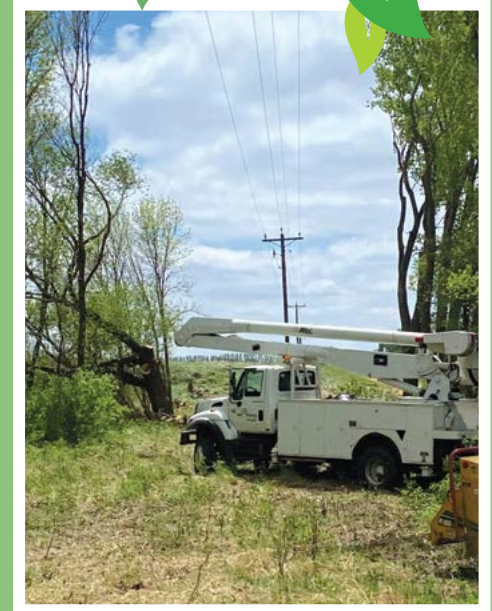
The formula for making your electricity reliable includes more than just strong power poles and cutting-edge technology. Trees and other greenery near our energy infrastructure also play a large role – and your co-op, your neighbors and YOU must all work together to keep that vegetation from damaging power lines and cutting off electricity flow.

### It's called VEGETATION MANAGEMENT.

Vegetation management creates, promotes and conserves sustainable plant communities while discouraging plants that pose safety and security concerns. Roseau Electric Cooperative monitors and maintains growth around our power lines to meet regulatory and environmental compliance requirements.

We use vegetation management within and near our line's RIGHT OF WAY – or the land under and immediately left and right of the power line. The right of way is a corridor in which no woody vegetation (like trees or shrubs) is allowed to ensure it doesn't grow tall and affect the line. Along the edges of the right of way, we use trained contractors to safely trim any hazardous tree that may grow into the right-of-way corridor. We also occasionally use EPA-approved biodegradable herbicide to clear out brush or noxious weeds that could interfere with service.

Roseau Electric Cooperative always puts safety first, and that's why proper vegetation management is so important to us! Improperly maintained trees and plants that grow into the right of way can spark fires, create power outages and stop crews from making important and timely repairs.



## Plant Trees Safely

Before you dig, call 811 to locate buried utility lines.

### LOW TREE ZONE

Avoid planting within 20 ft. of power lines. If planting is unavoidable, only plant shrubs and small trees that reach a mature height of 15 ft. or less.

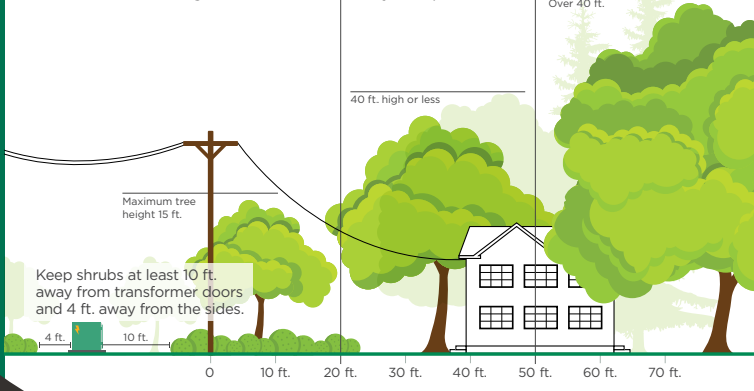
### MEDIUM TREE ZONE

Plant medium trees (under 40 ft. when mature) at least 25 ft. away from power lines.

### LARGE TREE ZONE

Plant large trees (over 40 ft. when mature) at least 50 ft. away from power lines.

Over 40 ft.



If you are a landowner, here are some things you should always remember about vegetation management.

- Never try to trim or remove tree limbs if they are anywhere near power lines.
- If you think a tree is growing too close to a line and could be a hazard, or if a tree is diseased, dying or unstable, call your co-op to coordinate a clearing.
- In an emergency, your co-op may need to perform vegetation maintenance without much warning. We will do our best to notify you as soon as possible.
- When planting trees and plants, always look up. Consider how large they will grow, and remember that lines can sag on hot days and sway in the wind. The clearance distances required for power lines vary depending on line voltage – the higher the voltage, the greater the distance.

If you have any questions about vegetation management practices in your area, please give us a call at 218-463-1543!

# National Electrical Safety Month

## Protect your pets

Every May, we mark National Electrical Safety Month by giving you advice on how to make your home safer for the family. This year, we'd like to focus on your fuzziest family members – your pets. Dogs, cats and other creatures can encounter unique electric hazards you may overlook. The following is a checklist you can use to ensure Poochie and Patches stay secure, healthy and happy.

### Hide electrical cords

Pets are notorious for turning electrical cords into chew toys, so make sure they are blocked or tucked out of sight. This will protect your pet from a shock and prevent exposed and frayed wires that could zap others or start a fire.

### Secure night-lights

Night-lights and similar standalone plug-ins can look like fun toys for cats and dogs. Double check that they are fitted securely to the outlet so that prongs won't be exposed to tiny chewers.

### Start training early

Cats and dogs often have free rein of a home, so teach them where they are unwanted early. Use a bitter tasting spray on cords and items that can't be chewed, or have a water mister on hand to spray your pet if they get into areas they shouldn't.

### Keep naps out of unsafe "nooks"

Some smaller animals like to find warm places to rest, like behind clothes dryers or computer equipment. Try to steer them away from these potentially dangerous areas.

### Know how to respond

If your pet may have been electrocuted, immediately unplug the hazardous device and apply a cold compress if you notice burns. Have your vet's after-hours emergency number posted clearly to access quickly. If you don't think an emergency visit is needed, monitor your pet for a couple of days to look for any changes in behavior or breathing.

### Be careful of diggers

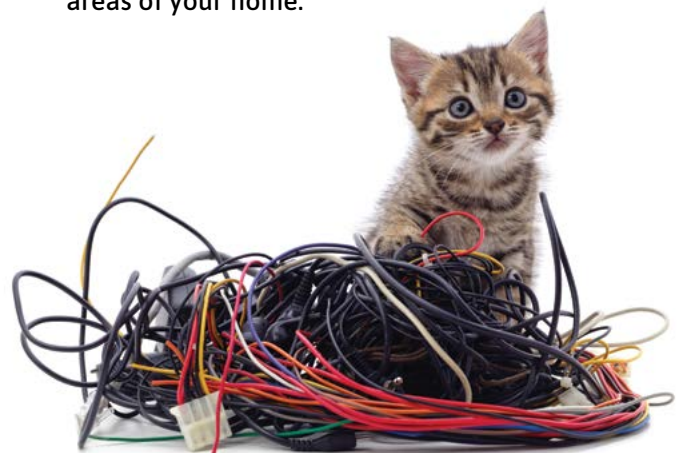
If your dog is a digger, be aware of where electrical lines may be buried in your yard (calling 811 for a locator service will help). If wires are underground in an area that may be tempting, find a way to block off that zone.

### Detangle low wires

Unruly nests of cords are not only an eyesore – they can wrap up and possibly strangle a curious pet, especially if they are in a panic. Be sure your cords are tidy and secured.

### No appliances near water

Small plug-in appliances like hair dryers or blenders should never be placed near water unattended. One wrong move and your pet could knock the item into a tub or sink and be seriously hurt, or hurt the humans around them. Make sure a Ground Fault Circuit Interrupter (GFCI) is installed in outlets near wet areas of your home.





# Operation Round Up® grants total \$15,550

The Operation Round Up® board met recently and a total of 12 grants totaling \$15,550 were awarded.

At the discretion of the ORU board, grants may be denied for a number of reasons. The top two reasons for most denials are funds would be spent outside of our service territory and/or funds would be spent for disposable or supply-type items.

Do you know of a worthy nonprofit organization in Roseau Electric's service territory that is raising money for a project? Please print an Operation Round Up® Grant Application and Guidelines form from our web-

site and get it to the organization. The next application deadline is Aug. 31, 2022, with the decisions made and grant awards paid out by the end of September 2022. Thank you for your part in Operation Round Up®.

Serving as Operation Round Up® board members are: Phil Kazmierczak, chair, District 6; Robert Bentow, vice chair, District 5; Laurie Polansky, secretary-treasurer, District 8; Ron Tveit, District 1; Beth Karol, District 3; Marilyn Grafstrom, District 4; Allison Harder, District 7; and Kandy Sundberg, District 9. The District 2 seat was open as of the March 2022 meeting.

## The following organizations have been awarded Operation Round Up® grants

<b>Gatzke Senior Center</b> <i>Replace and paint siding</i>	\$ 800
<b>Malung Community Center</b> <i>Electrical upgrades</i>	1,000
<b>Polar Ram Robotics</b> <i>Robotics starter kit</i>	750
<b>Roseau County Agricultural Society</b> <i>Lighting, livestock barns</i>	3,200
<b>Roseau County Historical Society</b> <i>Audio Spotlight technology</i>	1,000
<b>Roseau Eagles Auxiliary 3883</b> <i>Fair-time bingo stand</i>	1,500
<b>Ross Community Rink &amp; Rec</b> <i>Lighting</i>	1,000
<b>Salol First Lutheran Church</b> <i>Stair chair</i>	1,500
<b>Wannaska School Rink &amp; Rec</b> <i>Rink repair and paint</i>	1,000
<b>Warroad American Legion</b> <i>Appliance/Lighting upgrades</i>	2,000
<b>Warroad Community Partners</b> <i>Generator</i>	1,000
<b>Warroad Heritage Center</b> <i>Desktop computer</i>	800
<b>Total</b>	<b>\$15,550</b>

## DIGGING SOON?

One free, easy call gets your utility lines marked  
AND helps protect you from injury and expense. Safe  
digging is no accident; always call 811 before you dig.



Visit [www.call811.com](http://www.call811.com)  
for more information.

### COLOR CODING FOR MARKING UNDERGROUND UTILITIES

WHITE	Proposed excavation
PINK	Temporary survey markings
RED	Electric power lines, cables, conduit and lighting cables
YELLOW	Gas, oil, steam, petroleum or gaseous materials
ORANGE	Communication, alarm or signal lines, cables or conduit
BLUE	Water
PURPLE	Reclaimed water, irrigation and slurry lines
GREEN	Sewer and drain lines



Our offices will be closed  
**Monday, May 30,**  
 in observance of  
**Memorial Day**

If you experience an outage,  
 call 1-888-847-8840.

# member connection

## ENERGY TIP

### Service your air conditioner.

Easy maintenance such as routinely replacing or cleaning air filters can lower your cooling system's energy consumption by up to 15%. Also, the first day of spring could serve as a reminder to check your air conditioner's evaporator coil, which should be cleaned annually to ensure the system is performing at optimal levels.

## DATES TO REMEMBER

**May 8**  
 Mother's Day

**May 21**  
 Electric bill is due

**May 30**  
 Memorial Day;  
 Office is closed

## OFFICE HOURS

**Monday – Friday**  
**8 a.m. – 4:30 p.m.**  
**Phone 218-463-1543**

## AFTER HOURS/OUTAGE NUMBER

**Toll-free 1-888-847-8840**  
*(main outage call center)*

## CALL BEFORE YOU DIG

**1-800-252-1166 or 811**

## PAY BY PHONE

**1-877-999-3412**

## SMARTHUB

<https://roseauelectric.smarthub.coop/>

## WEBSITE

[www.roseauelectric.com](http://www.roseauelectric.com)

## Lifeline & Telephone Assistance Plan

You may be eligible for assistance on your telephone or internet bill if you receive benefits from certain low-income assistance programs. There are two programs:

### Minnesota's Telephone Assistance Plan (TAP)

Offers a monthly credit of \$10 on your landline telephone service plan. You may receive the TAP credit on one landline per household.

### The Federal Lifeline Program

Offers a monthly discount of \$5.25 on some landline and wireless telephone service plans. Lifeline also offers discounts of \$9.25 on some broadband internet service plans. You may receive the Lifeline discount on one service per household. The definition of a "household" is anyone living at an address including children, relatives, people not related to you, etc. who share income(s) and household expenses.

Fill out the applications found at [northstreamfiber.com/lifeline-telephone-assistance-plan](http://northstreamfiber.com/lifeline-telephone-assistance-plan).

If applying for the TAP or Federal Lifeline Program discount, mail the application to the address below:

**Roseau Electric Cooperative, Inc. | PO Box 100 | Roseau, MN 56751-0100**

## OPERATING STATISTICS

	Monthly		Year to Date	
	March 2021	March 2022	March 2021	March 2022
Members	6,565	6,631	6,565	6,631
kWh purchased	13,360,151	15,526,033	46,674,527	52,335,485
% change		16.21%		12.13%
Revenue	1,611,395	1,732,343	5,342,393	5,752,372
Cost of power	962,408	1,076,235	3,192,464	3,501,705
Other expenses	503,549	563,786	1,703,046	1,705,045
Operating margins	145,438	92,322	446,883	545,622
Nonoperating margins	16,397	178,941	36,796	217,480
Patronage dividends	-	-	-	-
Total margins	161,835	271,263	483,679	763,102



LIKE US ON FACEBOOK  
 TO STAY UP TO DATE!

@RoseauElectricCooperativeInc



# Power Plant Tour

**Tuesday - Wednesday  
July 12 - 13, 2022**

## Tour highlights this year:

- Minnkota's Grand Forks headquarters
- Milton R. Young Station near Center, N.D.
- BNI Coal mine
- Lodging in the Mandan/Bismarck area
- Meals and transportation included

**Use the form below and send with your payment of \$85 per person or \$150 per couple.**

Please print names of participants the way you would like them to appear on your name tags. We will send further details prior to departure. Return with check for \$85 per person or \$150 per couple to:

**Roseau Electric Cooperative, P.O. Box 100, Roseau, MN 56751**

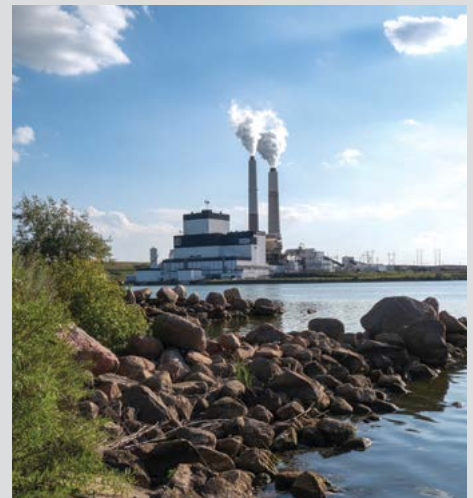
Name \_\_\_\_\_

Name \_\_\_\_\_

Address \_\_\_\_\_

City \_\_\_\_\_ State \_\_\_\_\_ Zip \_\_\_\_\_

Phone No. \_\_\_\_\_ Customer No. \_\_\_\_\_



Milton R. Young Station



Minnkota's headquarters



BNI Coal mine