

# BLO-AIR 52 CYCLONE 360 52 CYCLONE PLUS 52

## RECIRCULATION FANS

- Solves stagnant air problems
- Housing are made of sturdy fibreglass
- Quiet operation
- Can be installed in multiple configurations; on a column or suspended.
- Cools the animals, staff and bedding.

For the last 25 years VENTEC CANADA has helped its customers in animal production optimize the efficiency of their operations.

VENTEC CANADA products reduce animal stress due to temperature change, diseases, injuries and mortality through innovative solutions for effective ventilation, patented and durable.

The accessibility of VENTEC CANADA products is via an international distribution network.

**Contact us to find your nearest dealer.**



T.: 450 383-4000  
F.: 450 383-4004  
info@ventec.ca

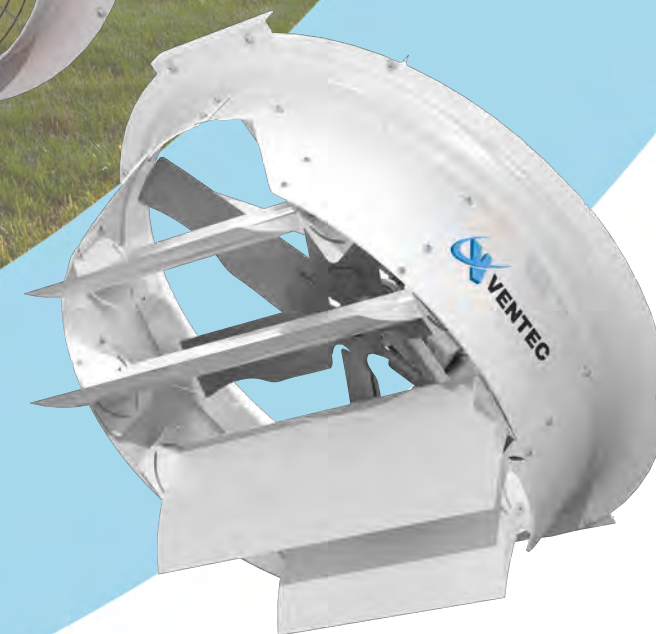
4000 avenue Pinard,  
Saint-Hyacinthe  
Québec, J2S 8K4

## RECIRCULATION FANS

BLO-AIR 52



CYCLONE 360 52



CYCLONE PLUS 52

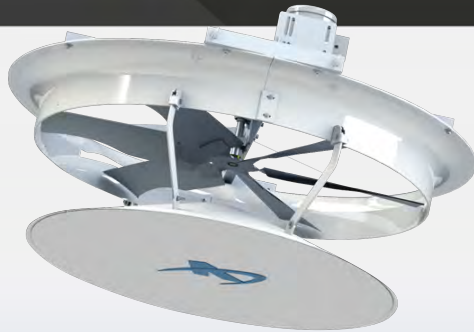
[www.ventec.ca](http://www.ventec.ca)



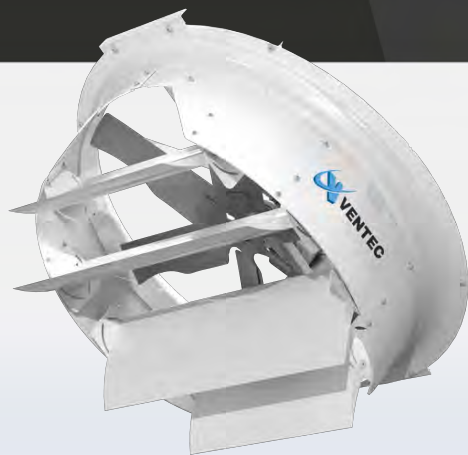
BLO-AIR 52



CYCLONE 360 52



CYCLONE PLUS 52



## BLO-AIR 52

Side view

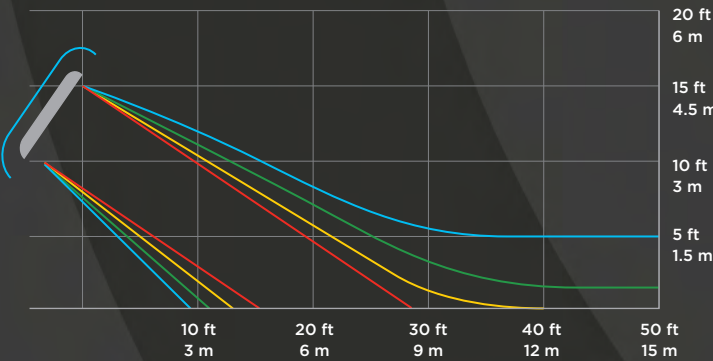


Figure 1 - Pattern of wind speed (ft/min) of Blo-Air 52

\* Result may vary

Top view

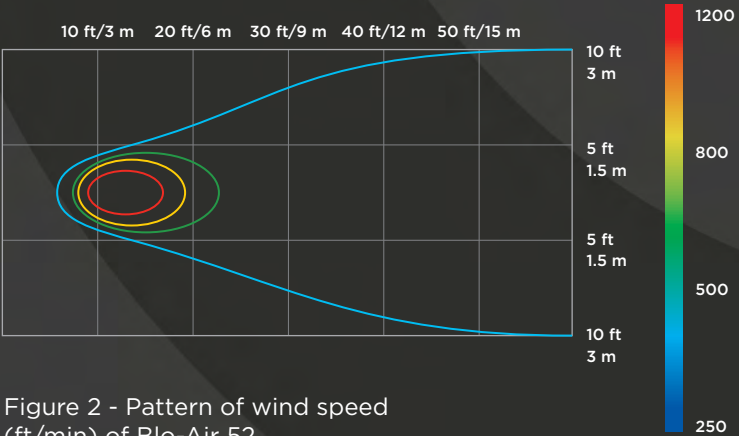


Figure 2 - Pattern of wind speed (ft/min) of Blo-Air 52

\* Result may vary

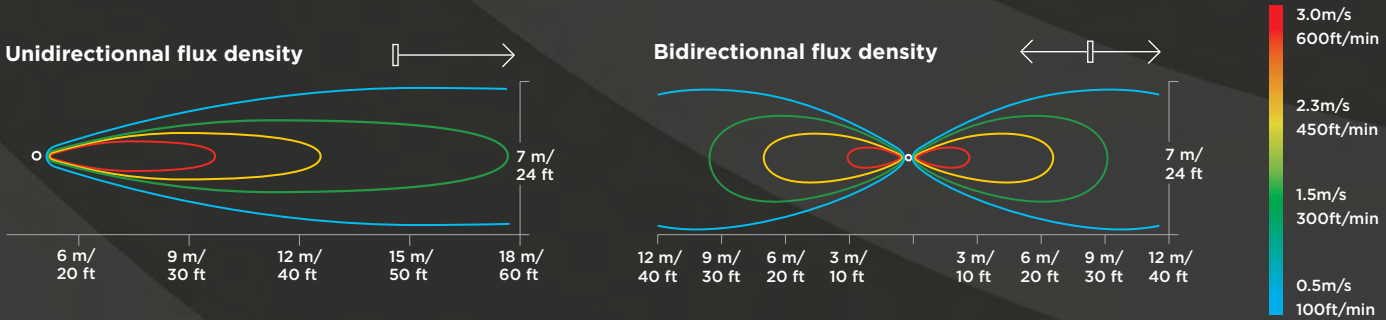
## Cyclone 360 52

Airflow Diagram



## Cyclone Plus 52

Airflow Diagram



## Technical specifications

MODEL	VOLTAGE (V)	FREQUENCY (Hz)	PH	MOTORS TYPE	AIR FLOW	EFFICIENCY	GLOBAL EFFICIENCY (%)	SPEED (RPM)
4114011	115/208-230V	60	1-3	INDUCTION	23 876 CFM (40565 m3/h)	18.0 CFM/W 30.6 m3/h/W	33.7	420
4114011EC	200-460V	50/60	3	PMAC	23 815 CFM (40461 m3/h)	19.1 CFM/W 32.45 m3/h/W	35.4	420

\*\* Speed (RPM) shown is nominal.

Technical specifications are based on 2020 model

Complies with the European ErP (Energy related product) directive Ecodesign 2009/125/CE

Technical specifications are based on 2018 model