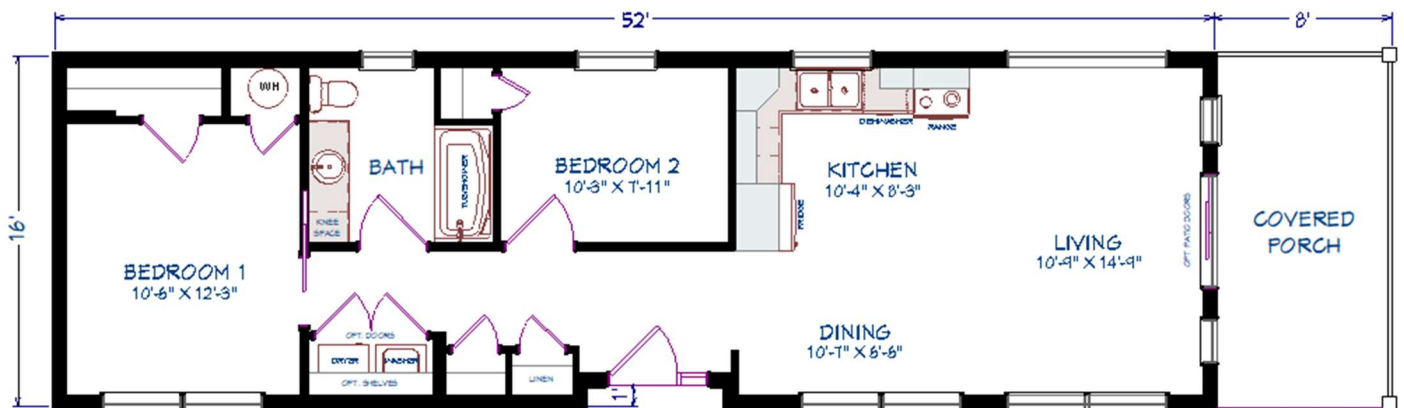




975 Alison Blvd. • Fredericton • NB E3C 0E5 • tel 506 458 5600 • www.northruphomes.com

CABINE

52' X 16' + 8' PORCH



2 BEDROOMS, 1 BATHROOM
954 SQ FT

BUILT BY
MAPLE LEAF  HOMES



975 Alison Blvd. • Fredericton • NB E3C 0E5 • tel 506 458 5600 • www.northruphomes.com

CABINE

52' X 16' + 8' PORCH

HOME SPECIFICATIONS

This beautiful 2 bedroom and 1 bathroom Cabine home has an open concept floor plan with a patio door offering access to a spacious covered porch. This floor plan provides you with all of the amenities whether it is your cottage, starter home or you are downsizing.

Exterior:

- ✓ Shed Style Roof
- ✓ R22 Wall Insulation / R36 Floor Insulation / R50 Roof Insulation
- ✓ 1" Rigid Foam Insulation – Additional R5 Wall Insulation
- ✓ ½" Plywood Exterior Sheathing
- ✓ Mitten Vinyl Board and Batten – Colour Gunmetal Grey
- ✓ Custom Windows by Kholtech Windows & Entrance Systems – Black Exterior/ White Interior
- ✓ Sloped ceiling – 9'-0" to 7'-6" walls
- ✓ 5 ft. Sliding Patio Door c/w Transom Above
- ✓ 8 ft. Covered Porch w/ Black Aluminum Railing and Post
- ✓ 2 Panel London Exterior Door c/w Sidelight – Colour Crimson Red
- ✓ Recessed Entry

Interior:

- ✓ Glenwood Birch Cabinets – Colour Latte
- ✓ Drop Ceiling Over Cabinets
- ✓ 3" x 6" White Tiled Backsplash in Kitchen
- ✓ Stainless Steel Appliances
- ✓ Washer/Dryer Closet with Shelves
- ✓ Two Panel Arch Top Interior Doors – Color White
- ✓ Pocket Door in Bedroom
- ✓ Colonial Pine Trim Package Throughout – Color White
- ✓ 5 ft. Dome Top Tub
- ✓ Upgrade LED Lighting Throughout
- ✓ USB Receptacle

BUILT BY

MAPLE LEAF  HOMES