



WELCOME TO YOUR MEDICAL HOME!

PediPlace provides **quality**, compassionate family-centered healthcare to North Texas children with **limited access** to care.



In **2022**, PediPlace received certification as a **Patient Centered Medical Home** from the National Center for Quality Assurance (NCQA), a national leader in healthcare quality. They identify the patient-centered medical home (PCMH) as a **model of care** that puts patients at the forefront of care, building better relationships between patients and their clinical care teams. Research shows that the PCMH **improves quality** and the **patient experience**, while **reducing health care costs**. As a PCMH, PediPlace makes a commitment to continuous quality improvement and a patient-centered approach to care.



2021 AT A GLANCE

5,609 Patients

\$1 million Value of medical supplies received through donations

921 New patients

According to the Texas Medical Association, **Texas** has the **highest rate** of **uninsured children** in the nation. Children of color are more likely to be uninsured, especially **Hispanic** children. Equitable access to quality pediatric primary care is essential.



2021 ACHIEVEMENTS

98%

Of patient families identify PediPlace as their medical home

77%

Patients ages birth - 15 months accessed 6 recommended preventative visits

99.6%

Of patients indicated that they were happy with the care provided at each visit

76%

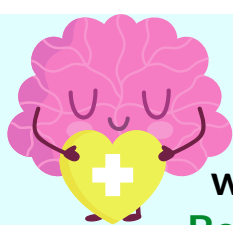
Patients ages 3-6 years received a well-exam

71%

Patients ages 12 years and older received a well-exam



All exceed Texas Medicaid benchmarks.



In **2021**, we added an integrated **Behavioral/Mental Health Program** that provides child and adolescent therapy to PediPlace patients.



PediPlace understands that the safest family system is one where **all** members of the household are **fully vaccinated** against **COVID-19**. PediPlace encourages and administers the COVID-19 vaccine to **eligible patients** and their **adult family members**.



2022

In **2022**, we expect to provide primary pediatric healthcare services to **6,500 patients**- a **14% increase** over 2021.



VISIT US AT [PEDIPLACE.ORG](https://pediplace.org)

📞 972-436-7962