

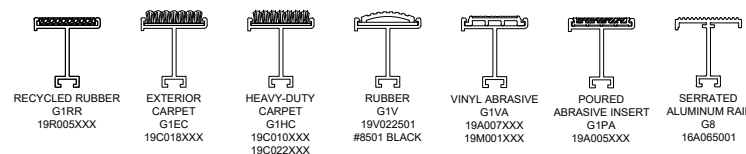
DESCRIPTION: PEDIGRID G1 ALUMINUM GRID WITH RECESSED DEEP PIT FRAME

*INSERT COLOR:

NOTE: PRODUCTS CONTAINED WITHIN DRAWINGS ARE MODELS OF CONSTRUCTION SPECIALTIES ENTRANCE FLOORING PRODUCTS

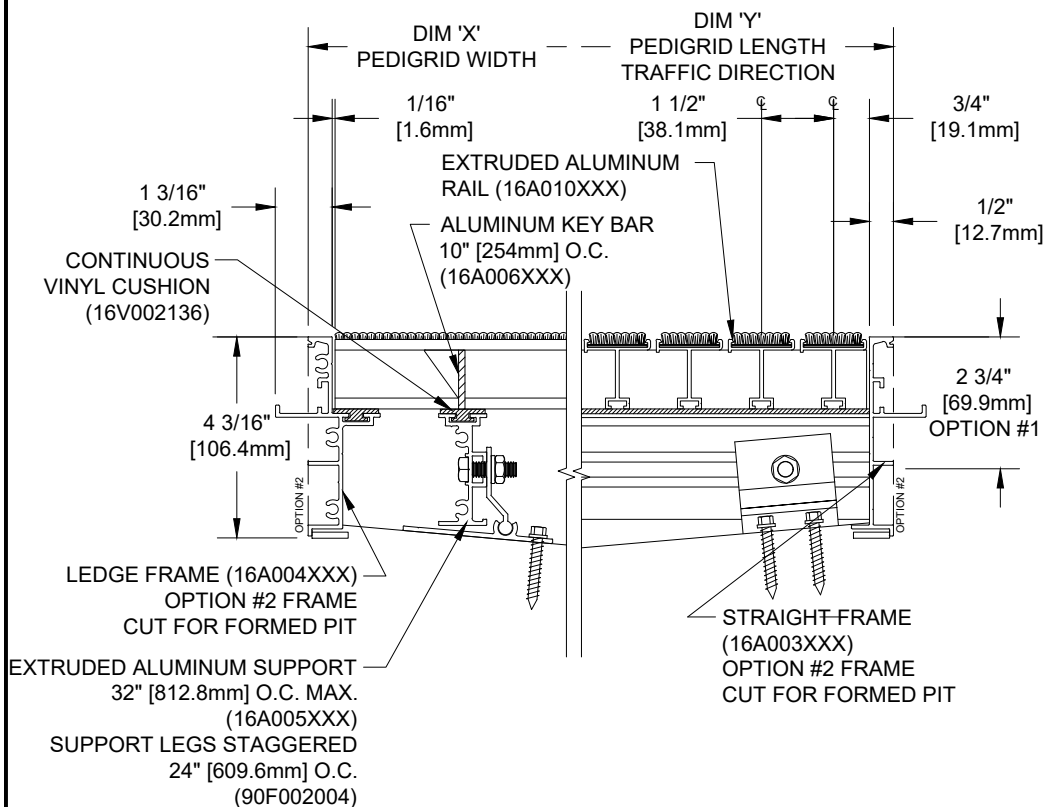
PEDIGRID INSERT STYLES

* OPTIONS AVAILABLE AT RONICK@RONICK.COM

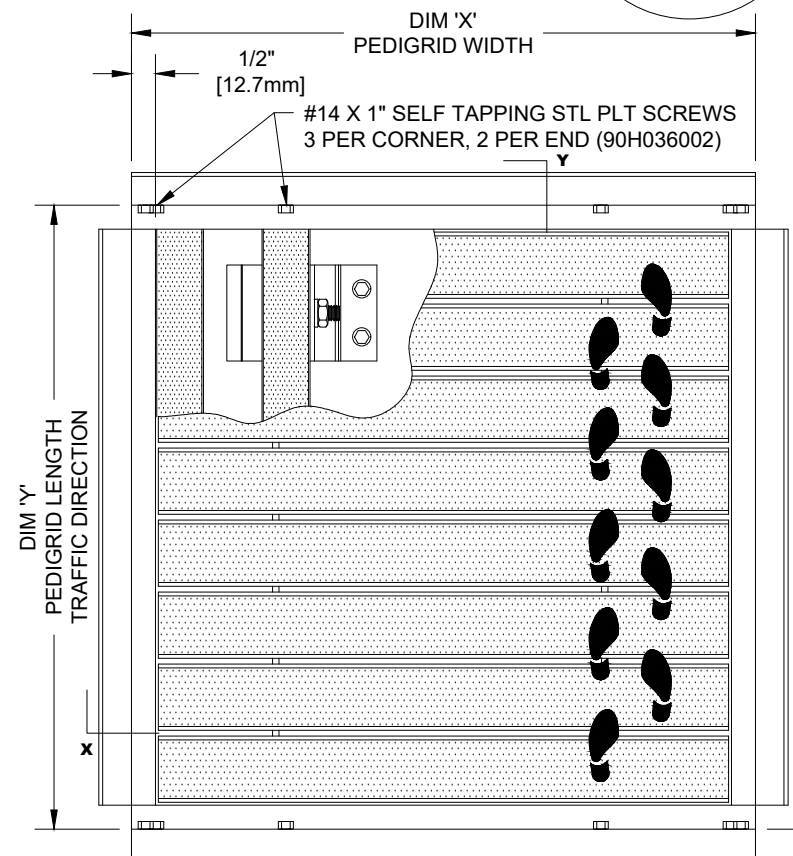


FILLER BAR POP-
RIVETED TO
FRAME IF NEEDED

SECTION X-Y



PLAN VIEW



NOTES:

* SCALE: NTS

- * 1 1/2" MODULE OF PEDIGRID INSIDE OF FRAME DIMENSION SHOULD BE CHANGED ONLY IN CREDMENTS OF 1 1/2" [38.1MM] TO AVOID THE USE OF FILLER BARS
- * PLEASE VERIFY TRAFFIC DIRECTION
- * PEDIGRID SHALL BE ABLE TO SUPPORT A 400 LB. ROLLING LOAD. LARGER LOADING MAY BE ACCOMODATED.
- * GRIDS OVER STRUCTURES @32" O.C. TO SUPPORT A MAX LOAD OF 300 LBS PER SQ. FT.
- * MAXIMUM MODULE SIZE OF GRID NOT TO EXCEED 12'-0" [3.6M] IN WIDTH (DIM 'X') & 3'-0" [.91M] IN LENGTH T.D. (DIM 'Y').

MAXIMUM MODULE SIZE OF GRID NOT TO EXCEED 12'0" [3656mm] IN WIDTH (DIM "X") & 9'0" [2743mm] IN LENGTH (DIM "Y").						
QTY	LOCATION	DIM "X" (WIDTH)	DIM "Y" (LENGTH)	FINISH	NOTES	
						PROJECT:
						CONTRACTOR:
						DRAWN BY:
						DATE:
						SHEET: