



**Premium
wood**
from the
centre of
Europe.

Since 1948.

 **EXPORTDRVO**

Croatia.

Located in Central Europe, Croatia is a country of intact nature with forests covering 44% of its land surface. Croatia can easily provide unique red beech, famous Slavonian oak, fine ash, maple, hornbeam and other national raw materials for production of high quality wood products.

Oak.

The king of the forest.

A timeless classic, with great strength and hardness, oak wood is very resistant to insect and fungal attack because of its high tannin content.

Beech.

Strong and attractive, beech is the most common hardwood in the world. It is widely used for furniture framing and carcass construction, flooring and engineering purposes, in plywood and in household items like plates.

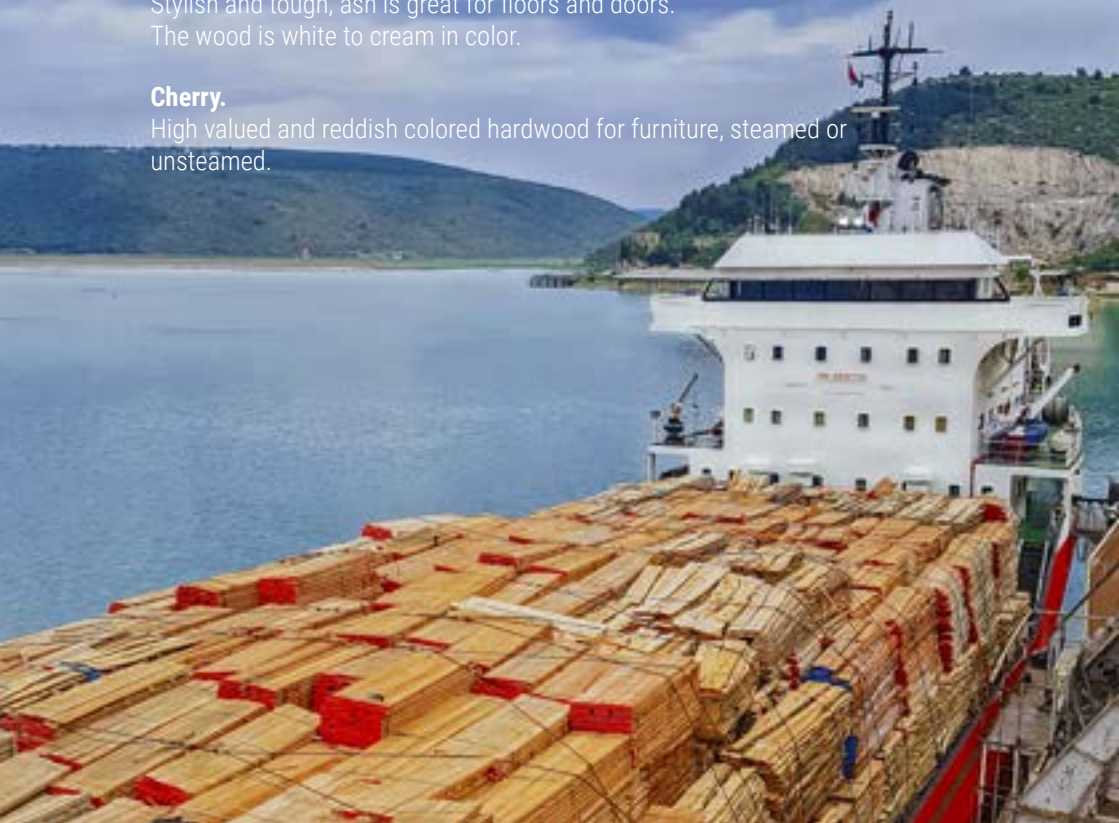
Ash.

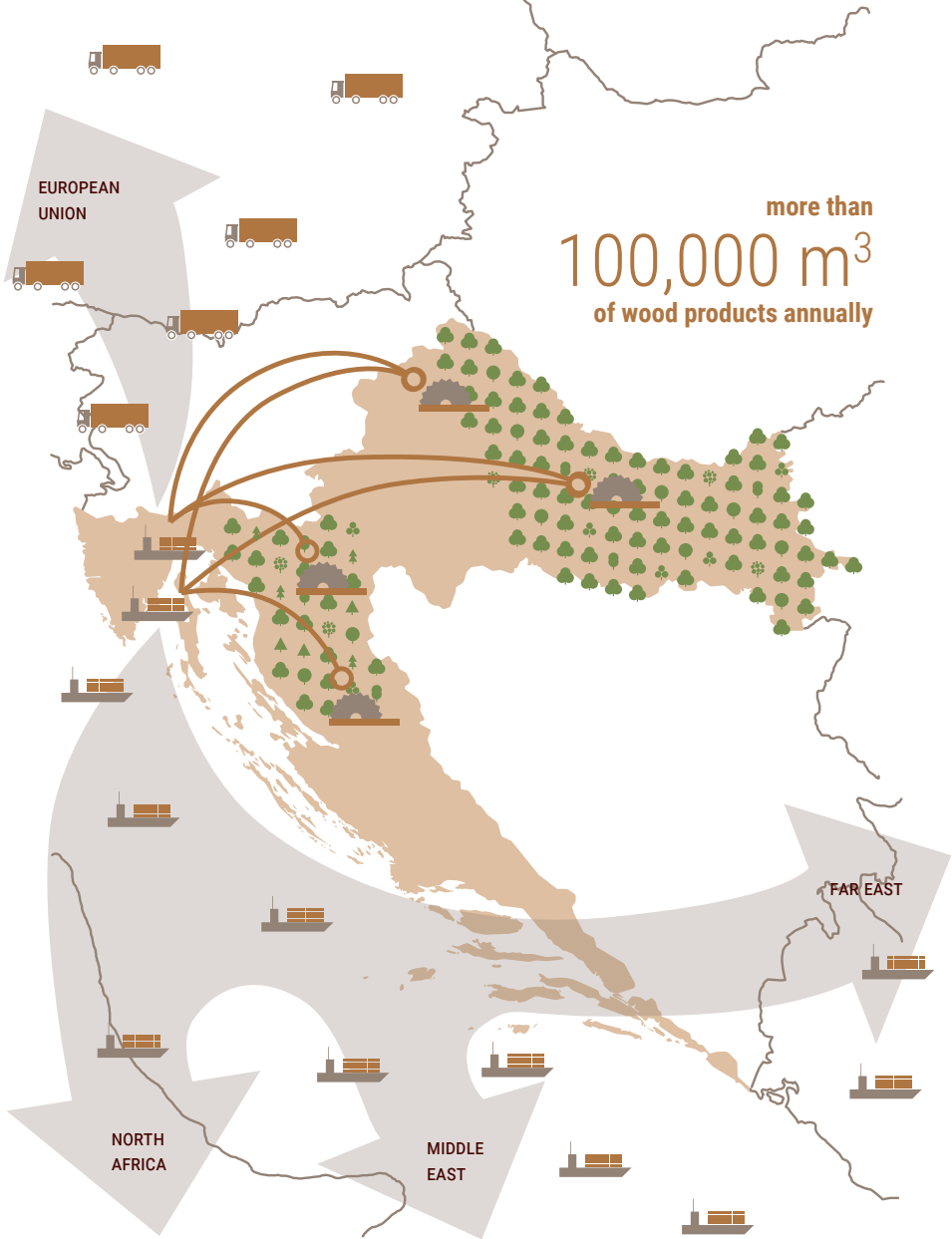
Stylish and tough, ash is great for floors and doors.

The wood is white to cream in color.








Cherry.

High valued and reddish colored hardwood for furniture, steamed or unsteamed.





Map key

-  OAK
-  BEECH
-  ASH
-  MAPLE
-  HORNBEAM
-  FIR
-  SPRUCE



SAWMILL



CONTAINER SHIP / BREAK BULK VESSEL



FREIGHT TRUCK



Sawn timber.

Edged or unedged, cut to size.

The Exportdrvo portfolio comprises of sawn timber, in fresh, air-dry and kiln-dry condition of all species of Croatian timber, from oak, beech, hornbeam, ash, maple, lime, alder, to many other indigenous species.

Sawn timber is offered in different forms, different conditions, unedged or edged, unsteamed or steamed. All different classes are offered (in oak from prime to rustic; in beech from prime, A class, to unsteamed material).



Panels.

Edged glued, finger joint...

Edge-glued panels are traditionally produced in oak, lightly steamed beech, unsteamed beech, ash, maple and European steamed cherry.

Finger-joint panels are traditionally produced in oak, lightly steamed beech, unsteamed beech, ash, maple, European steamed cherry and European darkly steamed walnut.

3-layer panels are produced from oak, steamed beech, ash, european maple, alder tree, european cherry and american walnut.

Flooring.

From chevron to Versailles.

The Exportdrvo product range is wide and varied, in various designs and finishing touches, all to the wishes of our partners and customers:

mosaic (lamel) parquet in various patterns (english pattern, squares, parallel pattern, industrial parquet in various dimensions, etc.), **lam parquet**, **classic solid parquet**, **massive wood floors**, **2-ply parquet**, **3-ply parquet**, **XXL 3-ply flooring**, **exterior flooring (decking)** made from thermotreated ash and massive and 2-ply parquets in **chevron**.



Veneer.

Sliced veneer or top layers.

This pinnacle of wood technology is made from the finest and rarest logs of oak, ash, beech and cherry.

Leader in the export of wood.

Since its establishment in 1948, Exportdrvo has been a wood industry leader in the region, whether as a supplier for the domestic market, or as an international export trade partner. Our portfolio comprises of a wide range of products, from high quality final products such as chairs, to flooring and panels or sawn timber.

Production starts in the forest. Logs are processed in more than 30 partner sawmills with annual cutting of 250,000 m³ per year. After seasoning sawn timber is kiln dried in modern kiln drying chambers with total capacity of more than 5,000 m³. We store our products in covered store yards with capacity 30,000 m³. They are located in major Croatian seaports on the Mediterranean sea from where we deliver to our customers all around the world.

Exportdrvo is one of the first FSC[®] certified companies in Croatia, holding the FSC[®] certificate since March 2001. Ask for our FSC[®] certified products.

Exportdrvo d.d.

A Trg Marka Marulića 18
10000 Zagreb
Croatia
T +385 1 4560 222
F +385 1 4560 329
M info@exportdrvo.hr
W www.exportdrvo.hr



The mark of
responsible forestry