

# WASTECLEANER 66E

CLEANING SHORELINES AND INLAND WATERS

## CLEAN MOTORISATION ⚡

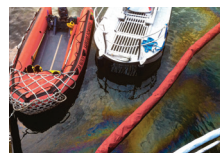
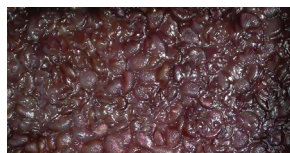
100% electric motorisation



The Waste Cleaner 66E is a **100% electric clean-up and depollution vessel** with unique and innovative technology for the collection of solid and liquid floating waste including hydrocarbons.

## EFFECTIVE DEPOLLUTION

Plastic and others floating waste, hydrocarbons, jellyfish, sewage releases, plants...



## ESSENTIAL SERVICES

Single lifting/craning point, road transport outline.



# WASTECLEANER 66E

## TECHNICAL SPECIFICATIONS

### CONSTRUCTION

Material  
Ship certification  
Regulation

Electric motor

Max. speed  
Endurance  
Battery pack  
Navigation category  
Lifting by a single lifting padeye

Aluminium  
Bureau Veritas  
French flag  
Division 222

25 kW  
33 kW turbo mode  
6 knots  
8 hours  
40 kWh  
5<sup>th</sup>

### DIMENSIONS

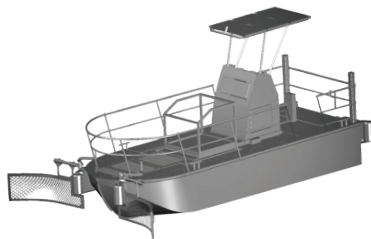
Length of hull  
Beam of hull  
Light weight  
Draft (average)  
Crew  
Transportable by trailer on the road

5,90 m  
2,20 m  
2 000 kg  
0,60 m  
1

### CLEANING CAPACITY

Filtering capacity  
Liquid storage tank  
Payload on deck  
Cleaning speed  
Cleaning width

750 m<sup>3</sup>/h  
1 000 L  
700 kg  
2 knots  
4,10m  
macrowaste  
3,50m  
hydrocarbons



### Multi purpose & multiservices ship

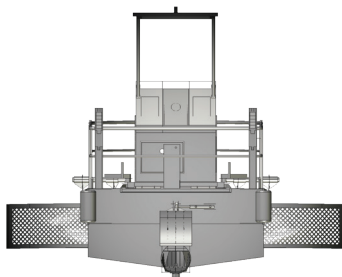
**Seaport services,**  
dock & pier cleaning  
black & gray water recovery,  
freight and passenger transport,  
fire hose, mooring.

### Patented depollution technology

**Dual flow technology,**  
allows for the clear water  
evacuation and the storage  
of waters polluted  
by hydrocarbons / oils.

### All kinds of pollution

Collection of solid waste  
(including plastics),  
collection of liquid waste  
(hydrocarbons, sewage  
release, black & gray water  
in option), jellyfish & plants  
(weedcutter option).



### Reduced carbon footprint

**100% electric motorisation**  
40 kWh with 8 hours  
of autonomy.

**Eco-conception :**  
aluminum manufacturing,  
(98% recycled aluminum),  
strength and durability.

### Easy to deploy

**Quick deployment :**  
Less than 30 seconds  
Front door, suction,  
basket for solid waste.

**Crew safety :**  
Hydraulic controls & command  
by a person from the cabin.

**Road transport outline :**  
Transportable by road  
on a suitable trailer and with  
a single lifting/craning point  
to facilitate its handling.

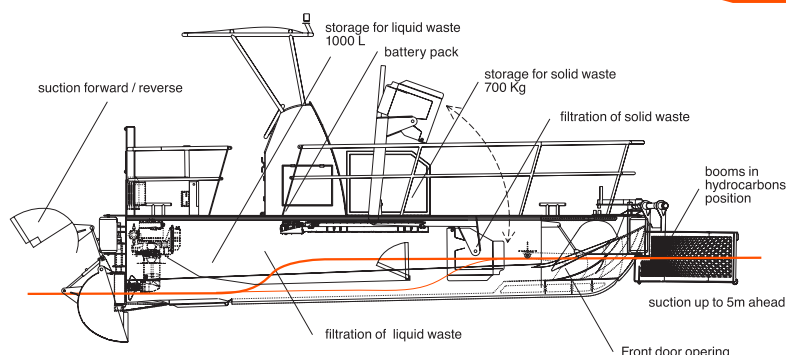
### Integrated depollution system

**Liquid waste collection**  
Inner ship floating storage  
built-in, unmatched storage  
capacity. No change in draft.  
No impact on stability.

**Solid waste collection**  
Filtration and automatic  
recovery on the deck.

**Suction flow available  
in static**  
Between two hulls,  
under the docks and most  
inaccessible areas.

**Suction while moving**  
Permanent suction in forward  
or reverse process.



**EFINOR SEACLEANER**

EFINOR SEA CLEANER  
—  
ZA DE KERPALUD  
22500 PAIMPOL  
FRANCE

—  
TEL • 02 96 20 33 18  
FAX • 02 96 22 76 18  
MAIL • CONTACT.ESC@EFINOR.COM

[WWW.SEACLEANER.EFINOR.COM](http://WWW.SEACLEANER.EFINOR.COM)

**DUTY  
BOATS  
FOR  
DIRTY  
SPOTS**