

Starting Primary School:

A Parent / Carer's Guide to St Chad's C of E Primary School



Welcome!

From our Headteacher

We are delighted that you have chosen our wonderful school for your child.

I joined St. Chad's as Headteacher in January this year so may not have met you all personally yet but have previously worked at our school up until September 2020 when I left to take up headship at another school in our Trust. I can genuinely say that returning to St. Chad's has felt like coming home! I have been reminded how warm and welcoming our school is over the last few months, having been made so welcome by pupils, staff, our school families, governors, the local community and our Church community.

We are passionate about a strong sense of community, and the importance placed on relationships is evident in how we work school families, local community, our local Church and local schools through the Northwest cluster. Effective partnerships with our parents and carers are vital, and we know that this starts now!

I never tire of talking about St. Chad's or showing 'it off', and so look forward to doing this and meeting you at one of our forthcoming events. Whether you are new to our school or your child has attended our nursery, we are really looking forward to getting to know you and your child over the new few months before they join us in reception from September.

In the meantime, we hope you find the information in this booklet and on our website helpful in preparing you and your child for September. We know that this is an important time for you and your child, and that there may be a whole mix of emotions. Whilst we have a number of events planned to support with this, please do not hesitate to contact us if there is anything else we can do to support.

It is our absolute privilege to welcome you and your child to our school family and look forward to meeting you all very soon.

Mrs Gina Marsland
Headteacher



From the Abbey MAT CEOs

Welcome to St Chad's CE Primary School.

At Abbey Multi Academy Trust, we are passionate about making a difference to the lives of all our children. They are at the heart of everything we do and we strive to inspire learners and change their lives as a result of our educational provision. We want all our schools to be the best they can be and for each child to discover the skills, abilities, talents and interests that lie within them as well as giving them safety, security and the skills they will need to be active, responsible citizens and happy, caring adults in the future. Our aim, quite simply, is to do the very best for children and recognise their individuality and uniqueness. Childhood is a special and wonderful time and no-one gets a second chance at it.

The primary and secondary schools within Abbey Multi Academy Trust are prepared to truly collaborate. The schools have a desire to question, change and innovate to ensure that what they provide enables our children to become successful learners, confident individuals and responsible citizens.

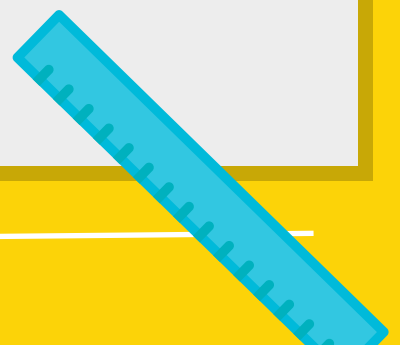
We work as active partners both formally, as part of our growing Multi Academy Trust, and informally, in the collaborative work we do with the Diocese, local universities, local and national business and our local community.



*Mrs Helen Pratten,
Co-CEO of Abbey MAT &
Executive Principal (Primary)*



*Ms Catherine Garrett,
Co-CEO of Abbey MAT &
Director of Education*



Vision and Values

In the light of God, we care, we share, we laugh, we learn.

In Christ's light, we seek to educate, nurture and empower; supporting each individual to flourish academically, socially and spiritually. Christian values guide our commitment to ensure everyone is valued and respected as God's unique and special creation. May each child at St. Chad's know how precious they are in God's sight.

Our school vision is rooted in the bible passage:

Jesus said 'I am the light of the world. Whoever follows me will never walk in darkness but will have the light of life'. John 8:12



Transition Timeline

Your child's transition to primary school is broken down into phases to be as manageable as possible. Here are the key dates that you should know:



April
Starting Primary Guide shared with families.



June/July
Stay and Play session as part of the transition process.



September
Starting school is staggered over two weeks. You will be given a specific start date and time for the first week, where children attend school for mornings only.
In week 2 children attend school for mornings and leave after lunch.
In week three they will be in school for the full day.



May/June
Teddy Bear Picnic
(Children & families welcome)
Please note, both dates for the Teddy Bear picnic are provisional depending on numbers



July
Teachers will visit children at their Nurseries/at home.

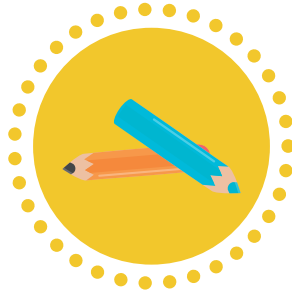
Getting Ready for September

Preparing for your child to go to school for the first time can be daunting if you are unsure of what to expect. We have organised some tips to help your family to get ready for September and make the transition as easy as possible.

Get prepared for the practical aspects of starting school by:



Practising the school run.



Finding out what items your child will need to bring with them.



Making a note of important dates in the school year.

Help your child to build independence by encouraging them to:



Put on their own coat and shoes.



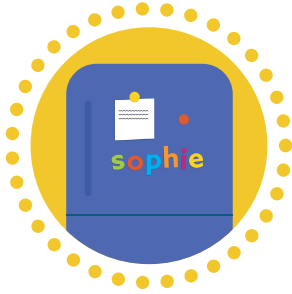
Use a knife and fork on their own.



Go to the toilet on their own.



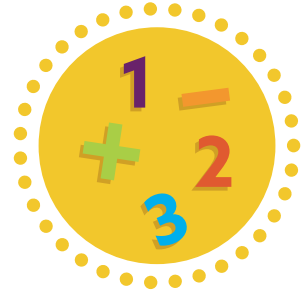
Help your child with learning words and numbers by:



Displaying their name around the house to encourage them to recognise it.



Listening to your child read as much as possible.



Bringing maths into everyday life - by identifying shapes around the house, for example.

Create a good atmosphere around the thought of school by:



Making the first morning as relaxed as possible.



Establishing a consistent morning routine.



Being positive about school and your child's learning.



Asking positive questions: "What was good about your day?"



Keeping in touch with school - reading letters sent home will keep you in the loop.

Uniform

Wearing a uniform helps pupils to feel a sense of pride in their school and a sense of belonging. We ask that you encourage your child to wear their uniform proudly and properly, and clearly label all items of clothing with your child's name.

Our uniform consists of:



- Grey skirt/pinafore dress/smart school trousers/shorts
- Gold or bottle green polo shirt (with or without logo) or white blouse/white shirt worn with a tie
- Bottle green jumper or cardigan (with or without logo)
- Black sensible school shoes (flat heels)
- Summer: Green or yellow check/stripe dress
- Hair accessories should be simple and in school colours if possible

Branded school items can be purchased from School Trends via their website. Non-branded items can be purchased from many high street stores, supermarkets and online shops.

Second hand school uniform is also available from our PTA, Friends Of St Chad's.

PE Kit

PE will not start immediately, though its important to note that for PE lessons, children are asked to wear:



- Black PE Shorts or black jogging suit bottoms
- Plain round necked t-Shirt in team colour (with or without school logo)
- Plain sweatshirt in team colour, bottle green or black (no branded items please)
- Trainers

You will find out your child's team colour before they start school.

Equipment

As well as their uniform, please ensure that your child comes to school with:



A name and filled water bottle (water only please).



Their green book bag (these are provided as a welcome gift!).



A pair of wellies.



Spare change of clothes including underwear.



A coat (every day, even when sunny!)

Attendance

It is a good idea to get children used to attending school regularly as soon as possible. Good attendance is linked to making friends more easily, as well as achieving academically.

To promote good attendance throughout the school, we ask that:

- Children only take time off for illness and exceptional circumstances. We do not authorise time out of school for holidays or other non-essential activities.
- Children arrive at school in good time for the start of the school day. Our gates open at 8:35am ready for children to head into their classrooms at 8:45am.
- You let us know if your child is unable to attend school as soon as possible by calling 0113 274 7110.



Communication

We value partnerships with our school families and know that communication is vital to making the school-home relationship work. We hugely value input from parents and carers, and use a variety of communication methods to suit different needs.

Communication can be made through:



Tapestry - the online portal we use to share information with families.



Email - every class teacher has an email address so you can contact the class teacher if required.



Phone - our office staff are happy to answer any queries during the school day.



Face-to-face communication - there are opportunities to speak to school staff at drop-off and pick-up times.



Letters home - please read all letters carefully as they include important information.



Newsletters - there will be a weekly whole school newsletter and a half termly year group newsletter.



Events

We know how important it is for you to feel part of the school, and of your child's education. We have regular opportunities to engage in school activities, such as:

- Stay and play sessions
- Parent story time
- Educational support sessions - such as phonics and maths workshops
- Family collective worship/celebration assemblies
- Attending a class trip as a parent helper
- Informal drop-ins/open classrooms to celebrate and share your child's work

Social Media

We know it is also important to see the school in action. We regularly share messages, images and videos of activities in school on social media. Please do feel free to take a look so you can get a sense of what is happening in school at the moment and how wonderful our children are.

Find us on Facebook, Twitter, and YouTube by searching 'St Chad's Primary'.



@stchadsce



Other Expectations

We greatly appreciate your support in your child's education. To ensure consistency between school and home, we ask that you:



Instil the importance of good behaviour choices, sharing and turn-taking.



Read aloud to your child daily.



Establish a good sleep routine so that your child arrives for school on time and ready to learn.



Enhancing School Time

Our Buddy System

Our year 6 children are buddied up with one of our new pupils from reception. This means that your child will have an older child in school who can support them to settle in. This year our year 6 pupils have:

- Supported our reception children at lunchtimes
- Walked to Church with their buddies for our Harvest, Christmas and Easter services
- Shared story time
- Led sports activities and events
- Shared visits to the local park

Before your child starts school, they will receive a letter from their buddies introducing themselves.

**We love spending time
with our buddies and
helping them.**

Year 6 Pupil



Wellbeing

We are devoted to supporting the physical, social, emotional and mental wellbeing of all our pupils and staff.

We have outlined a few things you can do with your child if they are feeling worried about starting school or anything else.

Take a moment to breathe:



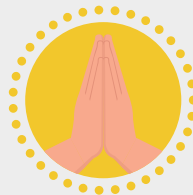
Breathe in slowly through the nose for four counts, then breathe slowly out of the nose for four counts.

Take a moment to breathe:



Breathing buddies: Lay on the floor with a teddy or pillow on their tummy will help them to focus their breathing as their breath moves the teddy up and down.

Mindfulness meditation:



Meditation can help your child to relax and focus on something else. Try searching 'Peace Out Guided Relaxation' on YouTube.

Mindfulness activities:



Fill a jar with ideas of things you'd like to do together on the weekends or school holidays.

Mindfulness activities:



Create a memory box together.

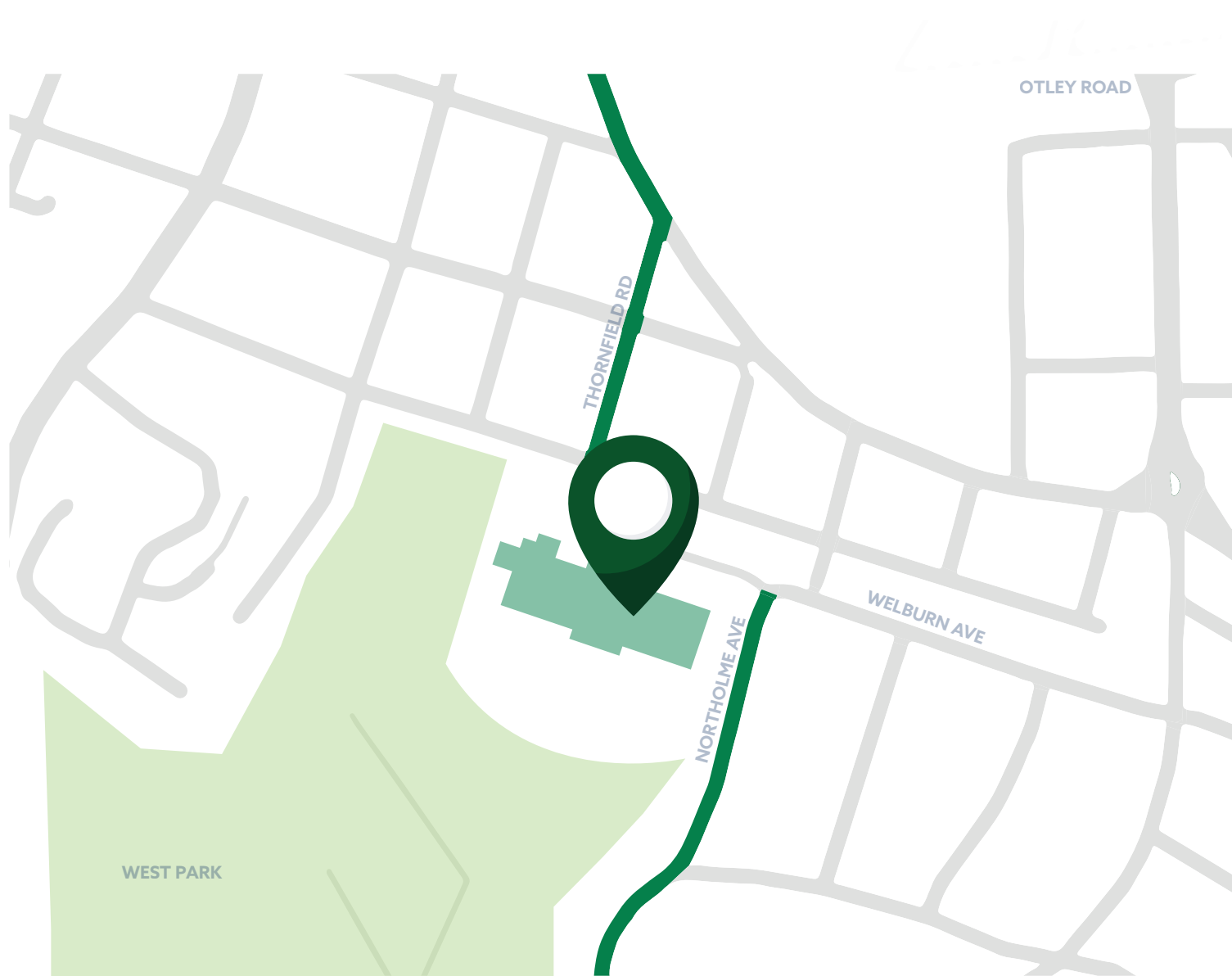
Getting to School

The school has clearly marked entrances from Northholme Avenue and Thornfield Road.

If you are driving to school, we politely ask that cars are parked legally and considerately of our neighbours.

The roads near to school can be busy, so please take care when crossing.

Staff are available at the start and end of the school day to support families as they arrive and leave the school site.



Wraparound Care - OOHA Club

OOHA Club is our breakfast and after school childcare service for children in Reception through to Year 6.

The club offers care for children in the morning from 7:45am to 8.45am, and after school from 3.10pm to 6pm.

Children attending the OOHA club can do a wide range of activities including arts, crafts, out door and indoor play, computing, dance, drama and much more!

Breakfast is provided to students who arrive before 8:30am and at After School children are given a small meal.

There will be an opportunity to visit the OOHA Club and speak with their staff during the Parent's information evening.

To enrol your child into OOHA Club, please collect a form from the school office or download from our website.



School Calendar

We know that life is busy, so we aim to issue provisional calendars in september and try to give plenty of notice for school events as well as adding reminders into our weekly newsletter. Our calendar is always evolving, so please keep an eye on it.

Look out for:

- Autumn Term parents' evening
- Autumn Term parents' workshops on phonics and maths
- Reception and KS1 Christmas Nativity
- Church services at St Chad's
- Spring Term parents' evening
- Sports Day
- Various school trips
- Friends of St Chad's (FOSC)



Friends of St Chad's

Friends of St Chad's (FOSC) are our incredible PTA who run a host of events and activities throughout our school year. Their calendar includes social events for parents, charity events, second hand uniform sales, Christmas cards designed by the children, lotteries and raffles and so much more.

You're invited...

...The next FOSC meeting takes place on Tuesday 23rd April at 7pm, in our School Hall. Come along, meet other school parents and see what they have planned for the year ahead!

Follow FOSC on Facebook



Term Dates

We know booking holidays and/or planning childcare can present logistical challenges and wanted to share our Term Dates at this point.

School opens after Summer Holiday	Wednesday 4th September 2024
Last day of school before Half Term	Friday 25th October 2024
School opens after Half Term	Monday 4th November 2024
School closes for Christmas Holiday	Thursday 19th December 2024
School opens after Christmas Holiday	Tuesday 6th January 2025
Last day of school before Half Term	Friday 14th February 2025
School opens after Half Term	Tuesday 25th February 2025
Last day of school from Easter Holiday	Friday 4th April 2025
School opens after Easter Holiday	Tuesday 22nd April 2025
School is closed for May Day Bank Holiday	Monday 5th May 2025
Last day of school before Half Term	Friday 23rd May 2025
School opens after Half Term	Monday 2nd June 2025
Last day of school before Summer Holiday	Friday 18th July 2025

The above dates include our Training days which will be on:

Monday 2nd September 2024
Tuesday 3rd September 2024
Friday 20th December 2024
Monday 24th February 2025
Monday 21st July 2025
Tuesday 22nd July 2025



Useful Contacts

We hope that the information in this guide has been helpful and reassuring. If you do have any further questions, please get in touch:

.....

St Chad's CE Primary School
Northholme Avenue
West Park
LS16 5QR

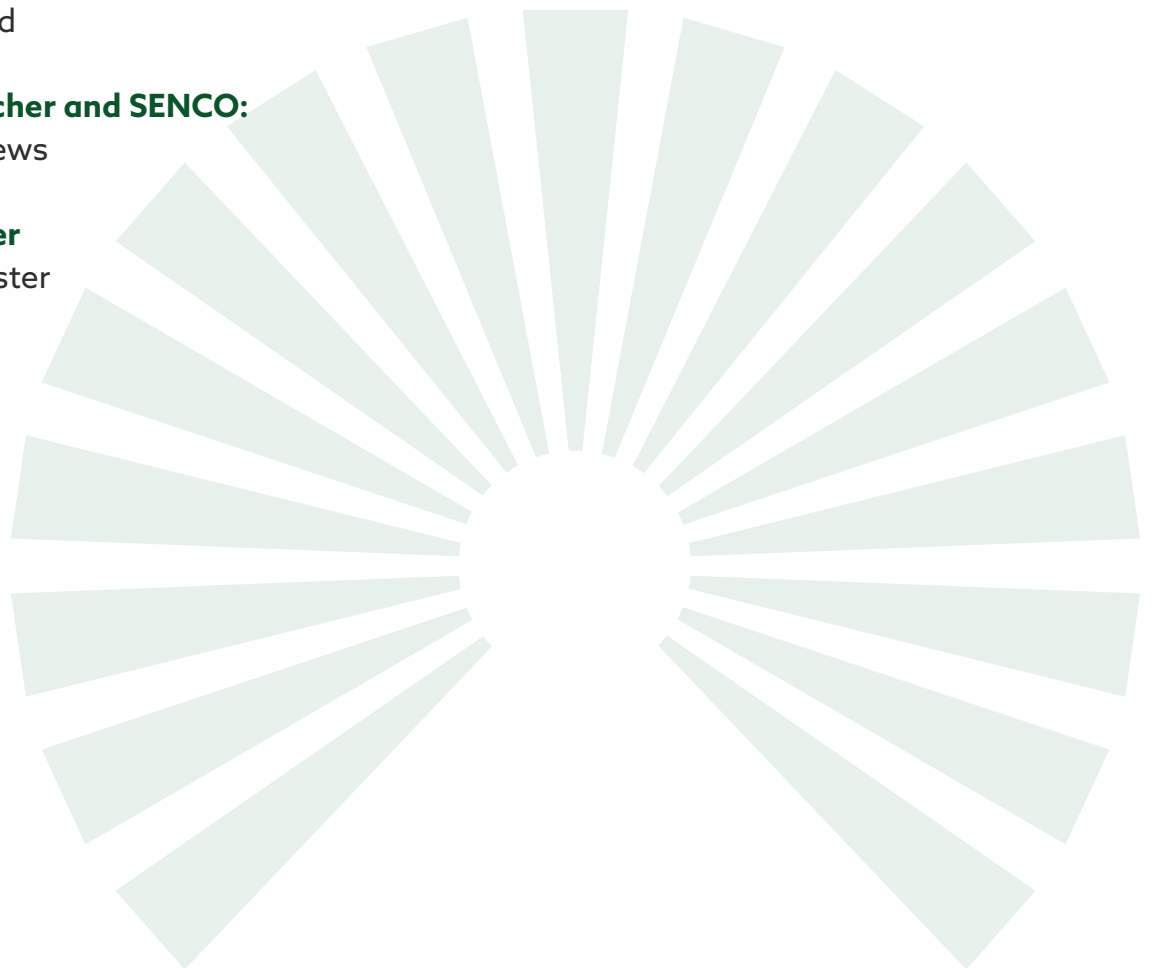
Tel: 0113 274 7110
Email: office@stchadsprimary.net
OOHAA: ooha@stchadsprimary.net

Chair of Governors
Ian Renard (Co-Chair)
Andie Wilson (Co-Chair)

Headteacher:
Mrs Gina Marsland

Deputy Headteacher and SENCO:
Mrs Jackie Matthews

Early Years Leader
Mrs Kathie McMaster





**St Chads C of E Primary School
Northholme Avenue
West Park
LS16 5QR**

office@stchadsprimary.net

0113 274 7110

