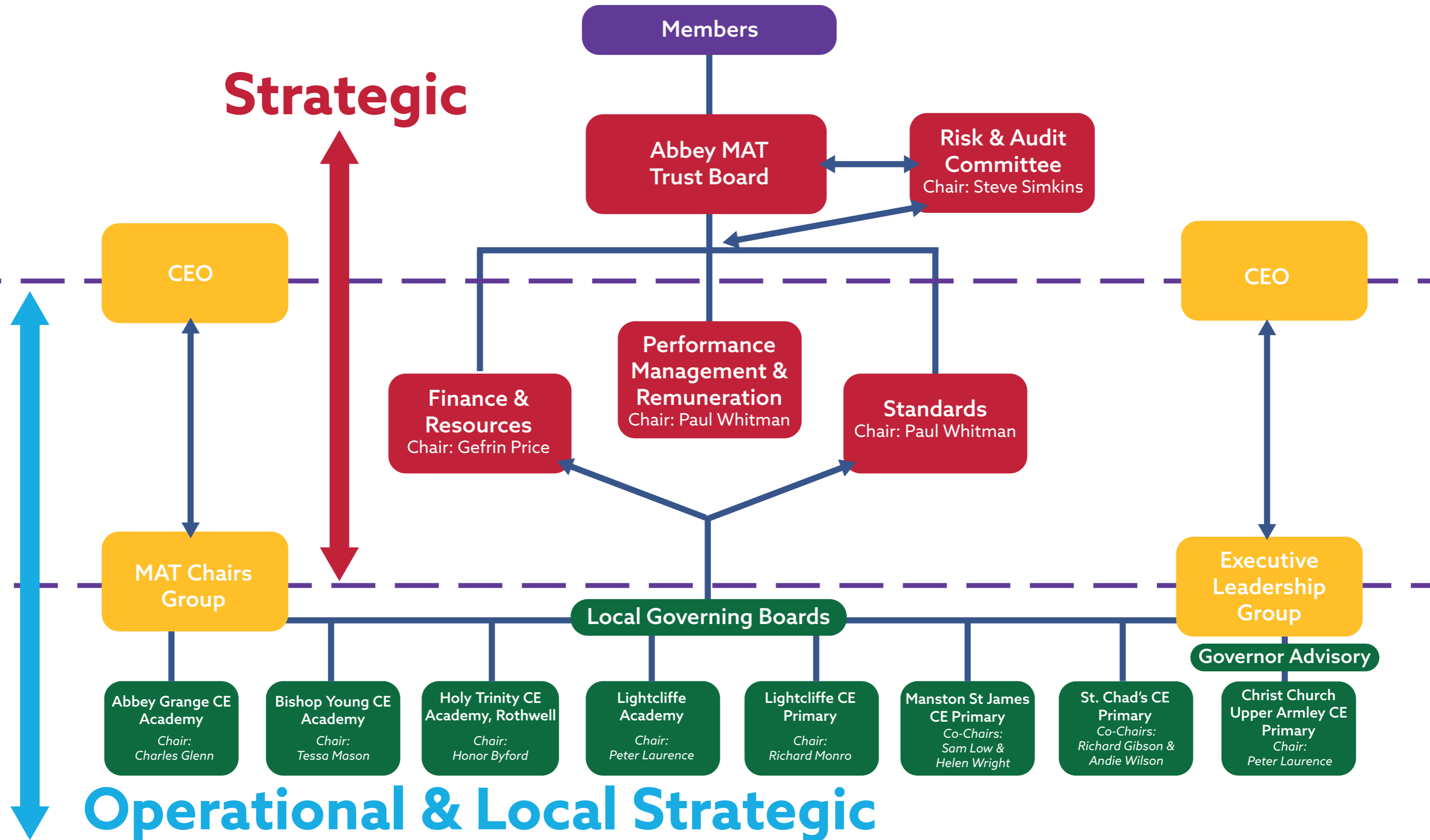


# Communication Flow



# Governance Structure

## Members

**Bishop of Leeds  
(or their representative)**

**Chair of Diocesan Board of Finance  
(or their representative)**

One person appointed by the Diocesan Board of Finance



## Trust Board

**Chair: Paul Whitman**

Date of Appointment: *1st November 2018*  
Appointed by: *Trust*

**Vice Chair: Gefirn Price**

Date of Appointment: *1st November 2018*  
Appointed by: *Trust*

**Tessa Mason**

Date of Appointment: *17th June 2019*  
Appointed by: *Members*

**Kamila Morawiecka-Watkins**

Date of Appointment: *22nd July 2022*  
Appointed by: *Members*

**Peter Laurence**

Date of Appointment: *10th September 2018*  
Appointed by: *Members*

**William Rachmann**

Date of Appointment: *23rd March 2020*  
Appointed by: *Members*

**Co-CEO/Director of  
Education: Catherine Garrett**

Date of Appointment: *1st January 2019*  
Appointed by: *Ex-officio*

**Steve Simkins**

Date of Appointment: *10th September 2019*  
Appointed by: *Members*

**Co-CEO/Executive  
Principal (Primary): Helen  
Pratten**

Date of Appointment: *1st January 2019*  
Appointed by: *Ex-officio*

**Robert Pritchard**

Date of Appointment: *1st February 2022*  
Appointed by: *Members*

## Trustees who have served at any point in the last 12 months

**France Baker**

Date of Appointment:  
*17th May 2019 - 22nd July 2022*

**Philip Turner**

Date of Appointment:  
*25th March 2021 to 23rd March 2022*