

Starting Primary School:

A Parent / Carer's Guide to Christ Church Upper Armley CE Primary School

From our Head of School

Welcome to Christ Church Upper Armley Primary School, situated in a vibrant and diverse community, less than a mile from Leeds city centre. We are a warm and welcoming school, steeped in 150 years of history. Our past pupils include the writers Alan Bennett and Barbara Taylor-Bradford, and we continue to celebrate and nurture the talents of all our pupils.

I am incredibly proud to be the Headteacher at Christ Church, as I believe it to be a very special place where 'Hand in hand, we learn'. Our children are at the heart of everything we do and we strive to work with parents, carers and the local community as we believe that the development of our young people requires committed support from all the adults in their lives.

Our vision and values are at the core of everything we do. They underpin our teaching and learning, and provide an environment which prepares our pupils as confident, happy citizens. As a Church school, we can take our inspiration from -

'The fruit of the spirit is love, joy, peace, patience, kindness, goodness, faithfulness, gentleness and self-control.' (Galatians 5:22-23)

We look forward to meeting you.

Ms S Collier, Head of School



Welcome!

From the Abbey MAT CEOs

Welcome to Christ Church Upper Armley CE Primary School.

At Abbey Multi Academy Trust, we are passionate about making a difference to the lives of all our children. They are at the heart of everything we do and we strive to inspire learners and change their lives as a result of our educational provision. We want all our schools to be the best they can be and for each child to discover the skills, abilities, talents and interests that lie within them as well as giving them safety, security and the skills they will need to be active, responsible citizens and happy, caring adults in the future. Our aim, quite simply, is to do the very best for children and recognise their individuality and uniqueness. Childhood is a special and wonderful time and no-one gets a second chance at it.

The primary and secondary schools within Abbey Multi Academy Trust are prepared to truly collaborate. The schools have a desire to question, change and innovate to ensure that what they provide enables our children to become successful learners, confident individuals and responsible citizens.

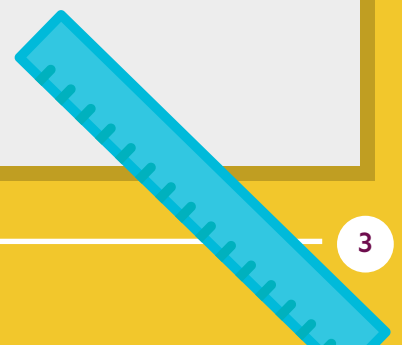
We work as active partners both formally, as part of our growing Multi Academy Trust, and informally, in the collaborative work we do with the Diocese, local universities, local and national business and our local community.



*Mrs Helen Pratten,
Co-CEO of Abbey MAT &
Executive Principal (Primary)*



*Ms Catherine Garrett,
Co-CEO of Abbey MAT &
Director of Education*



Our Core Values

Demonstrate Christian values of respect, care and tolerance.

Understand and live by defined British values.

Care for themselves, each other and the environment.



Transition Timeline

Your child's transition to primary school is broken down into phases to be as manageable as possible. Here are the key dates that you should know:



April/May
First contact made with families



June/July
Visit the school as part of a 'Getting to Know You' process.



May, June & July
Stay and learn sessions



September
'Incredible Inkpens': In September we welcome our Reception children (the incredible Inkpens) and families to a successful start to school. For the first 2 weeks of term this means a part time start gradually building to full days within 2 weeks.

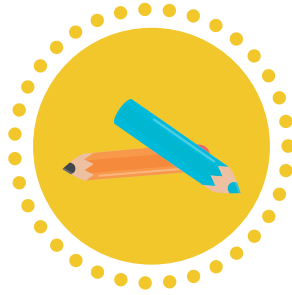
Getting Ready for September

Preparing for your child to go to school for the first time can be daunting if you are unsure of what to expect. We have organised some tips to help your family to get ready for September and make the transition as easy as possible.

Get prepared for the practical aspects of starting school by:



Practising the school run.



Finding out what items your child will need to bring with them.



Making a note of important dates in the school year.

Help your child to build independence by encouraging them to:



Put on their own shoes.

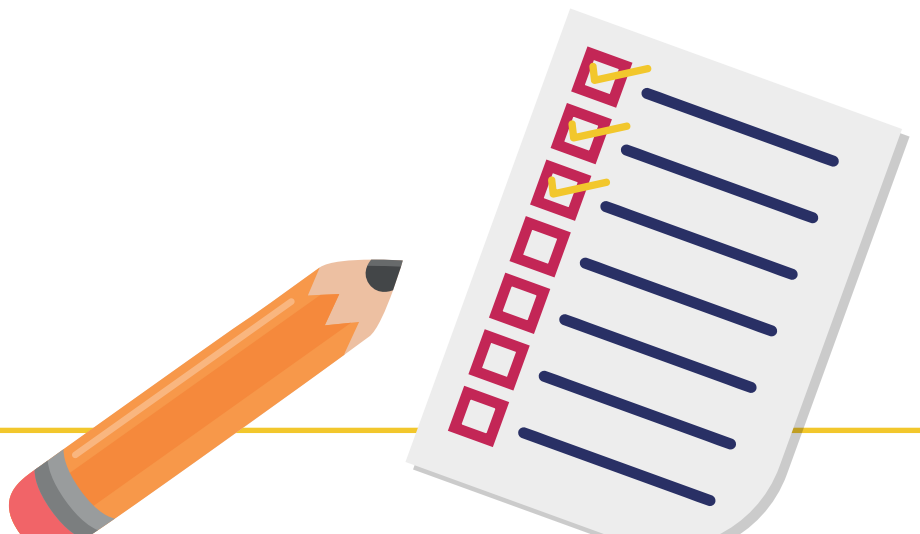


Use a knife and fork on their own.



Go to the toilet on their own.

We learn with head, heart and hand



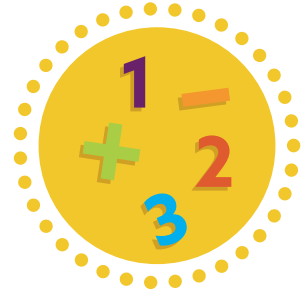
Help your child with learning words and numbers by:



Displaying their name around the house to encourage them to recognise it.



Listening to your child read as much as possible.



Bringing maths into everyday life - by identifying shapes around the house, for example.

Create a good atmosphere around the thought of school by:



Making the first morning as relaxed as possible.



Establishing a consistent morning routine.



Being positive about school and your child's learning.



Asking positive questions: "What was good about your day?"



Keeping in touch with school - reading letters sent home will keep you in the loop.

Uniform

Wearing a uniform helps pupils to feel a sense of pride in their school and a sense of belonging. We ask that you encourage your child to wear their uniform proudly and properly, and clearly label all items of clothing with your child's name.

Our uniform consists of:



- School sweatshirt / cardigan with logo.
- White or burgundy polo-shirt / white shirt or blouse.
- Black or grey trousers / grey skirt, or pinafore dress.
- Sensible black or brown shoes.
- In summer: black or grey shorts / red and white school dress.

PE Kit

PE lessons will start after October half-term. For PE lessons, children are asked to wear:



- Plain white t-shirt.
- Black shorts.
- Black plimsolls.
- For outside: black jogging bottoms, a hoodie, and trainers.



Equipment

As well as their uniform, please ensure that your child comes to school with:



A filled water bottle
(water only please).



Their burgundy book bag
(these are provided as
a welcome gift!).



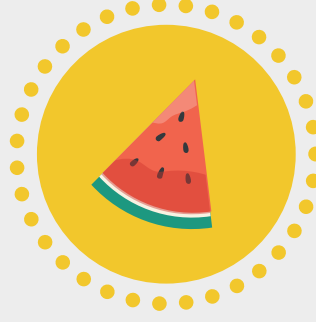
A pair of wellies.



Spare underwear.



A coat.



A piece of fruit or
veg in a named container
or bag (optional).

Attendance

It is a good idea to get children used to attending school regularly as soon as possible. Good attendance is linked to making friends more easily, as well as achieving academically.

To promote good attendance throughout the school, we ask that:

- Children only take time off for illness and exceptional circumstances. We do not authorise time out of school for holidays or other non-essential activities.
- Children arrive at school in good time to begin their lessons at 8:50am. We teach all pupils the mantra: "Be in line by ten to nine".
- You let us know if your child is unable to attend school as soon as possible by calling 0113 263 8606.



Communication

We value partnerships with our school families and know that communication is vital to making the school-home relationship work. We hugely value input from parents and carers, and use a variety of communication methods to suit different needs.

Communication can be made through:



Email - every class teacher has an email address which is checked regularly throughout the day.



Phone - our office staff are happy to answer any queries during the school day.



Face-to-face communication
- there are opportunities to speak to school staff at drop-off and pick-up times.



Letters home - please read all letters carefully as they include important information.



Events

We know how important it is for you to feel part of the school, and of your child's education. We regularly host:

- Stay and play sessions.
- Educational support sessions - such as phonics and maths workshops.
- Family collective worship/celebration assemblies.

Social Media

We know it is also important to see the school in action. We regularly share messages, images and videos of activities in school on social media. Please do feel free to take a look so you can get a sense of what is happening in school at the moment and how wonderful our children are.

Find us on Facebook, Twitter, and YouTube by searching 'Christ Church Upper Armley'.



 @CCUACEPrimary



Other Expectations

We greatly appreciate your support in your child's education. To ensure consistency between school and home, we ask that you:



Instil the importance of good behaviour choices, sharing and turn-taking.



Read aloud to your child daily.



Establish a good sleep routine so that your child arrives for school on time and ready to learn.



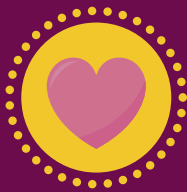
Vision, Christian Ethos & Values

Our school vision is rooted in Biblical teaching 'the fruit of the spirit is love, joy, peace, patience, kindness, goodness, faithfulness, gentleness and self-control' (Galatians 5;22-23)

We follow a yearly timetable of Christian Values, which form the basis of our Collective Worship as we move through each term. Using the Bible as a starting point, we challenge our pupils to relate the values not only to themselves as individuals, but also to the wider world and current events at an age-appropriate level.

Our Christian Values are as follows:

Autumn Term



Autumn 1:
Generosity and
Thankfulness



Autumn 2:
Compassion
and Trust

Spring Term



Spring 1:
Courage and
Perseverance



Spring 2:
Forgiveness
and Justice

Summer Term



Summer 1:
Friendship
and Service



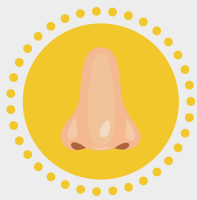
Summer 2:
Respect
and Truth

Wellbeing

We are devoted to supporting the physical, social, emotional and mental wellbeing of all our pupils and staff.

We have outlined a few things you can do with your child if they are feeling worried about starting school or anything else.

Take a moment to breathe:



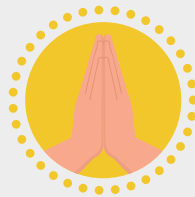
Breathe in slowly through the nose for four counts, then breathe slowly out of the nose for four counts.

Take a moment to breathe:



Breathing buddies: Lay on the floor with a teddy or pillow on their tummy will help them to focus their breathing as their breath moves the teddy up and down.

Mindfulness meditation:



Meditation can help your child to relax and focus on something else. Try searching 'Peace Out Guided Relaxation' on YouTube.

Mindfulness activities:



Fill a jar with ideas of things you'd like to do together on the weekends or school holidays.

Mindfulness activities:



Create a memory box together.

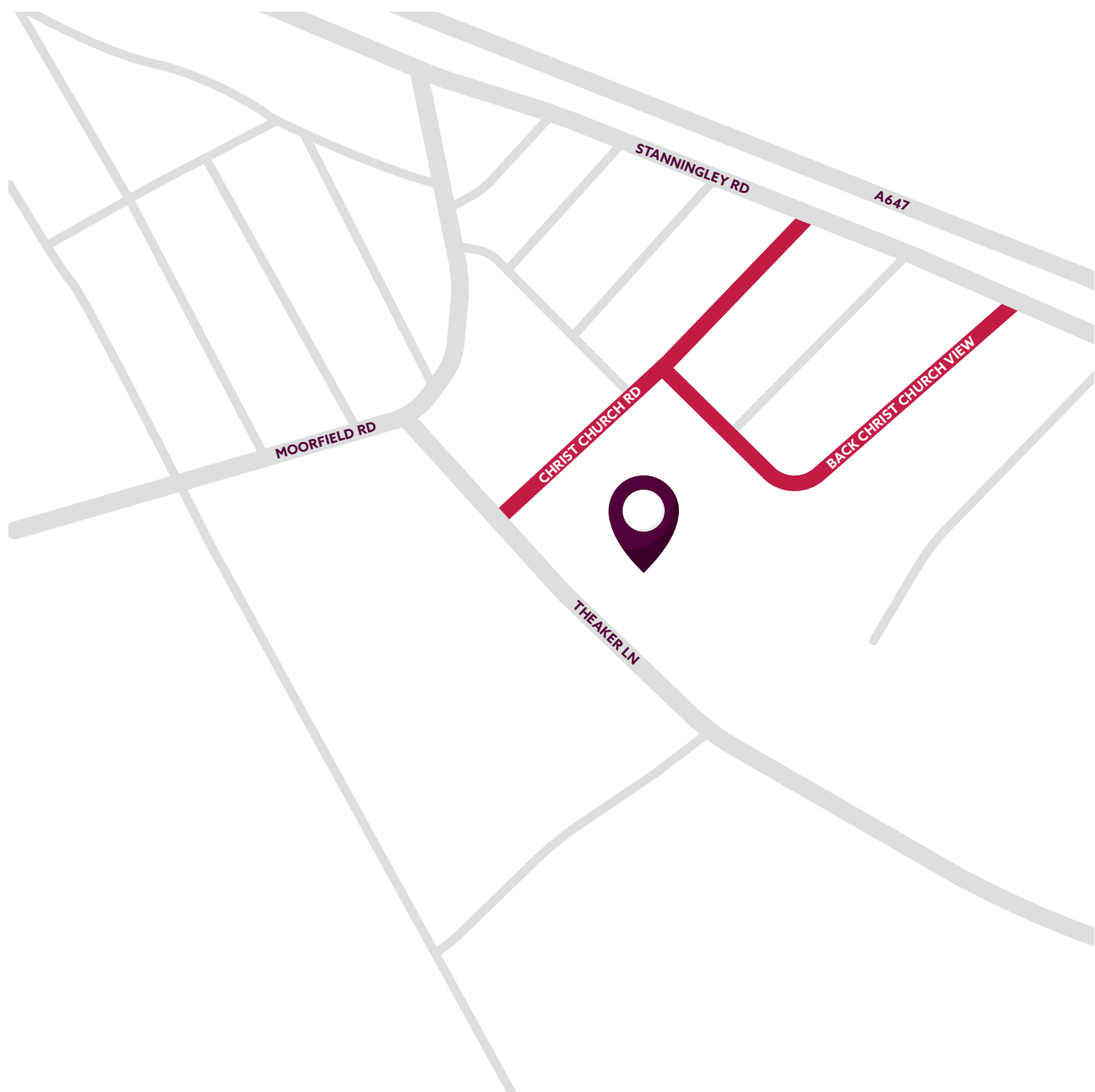
Getting to School

The school has clearly marked entrances from Christ Church Road.

Each class has its own entrance, which can be found by following onsite signage. Staff will also be available to support families on entrance to the school site.

Our site is fully accessible. If you drive to the school, we politely ask that cars are parked legally and responsibly.

The roads near to school can be busy, so please take care when crossing.



Helping Your Child

On our YouTube channel, you can find a number of videos with tips on how you can help your child at home with early reading, phonics and number.

We hope you find these videos helpful, and keep an eye out for more in future.

**Scan the QR code
to view our videos**



School Calendar

We know that life is busy, so we try to give as much notice as possible for school events. We will be sharing a calendar for the year in September. Look out for:

- Autumn Term parents' evening.
- Autumn Term parents' workshops on phonics and maths.
- Reception and KS1 Christmas Nativity.
- Christmas Service at Christ Church Armley.
- Spring Term parents' evening.
- Easter Service at Christ Church Armley.



Term Dates

We know booking holidays and/or planning childcare can present logistical challenges and wanted to share our Term Dates at this point.

School opens after Summer Holiday	Wednesday 4th September 2024
Last day of school before Half Term	Friday 25th October 2024
School opens after Half Term	Monday 4th November 2024
School closes for Christmas Holiday	Thursday 19th December 2024
School opens after Christmas Holiday	Tuesday 6th January 2025
School closes for Half Term	Friday 14th February 2025
School opens after Half Term	Monday 24th February 2025
School closes for Easter Holiday	Friday 4th April 2025
School opens after Easter Holiday	Tuesday 22nd April 2025
School is closed for May Day Bank Holiday	Monday 5th May 2025
Last day of school before Half Term	Friday 23rd May 2025
School opens after Half Term	Monday 2nd June 2025
Last Day of school before Summer Holiday	Friday 18th July 2025

We will also have additional training days which will be advised in September.

Monday 2nd September 2024
Tuesday 3rd September 2024
Friday 25th October 2024
Friday 20th December 2024
Monday 21st July 2025
Tuesday 22nd July 2025



Useful Contacts

We hope that the information in this guide has been helpful and reassuring. If you do have any further questions or concerns, please get in touch:

.....

Christ Church Upper Armley CE Primary
Theaker Lane
Leeds
LS12 3NU

Tel: 0113 320 9617

Email: office@ccuaprimery.co.uk (FAO Mrs Wainwright)

Chair of Governors

Mrs Sarah Coltman

Head of School:

Ms Collier

Assistant Head Teachers:

Mrs D Murfin and Mrs N Myers

SENCO:

Mrs A Green





Christ Church Upper Armley C of E Primary School
Theaker Lane
Leeds
LS12 3NU

 facebook.com/CCUACEPrimary
office@ccuapprimary.co.uk

 [@ccuaceprimary](https://twitter.com/ccuaceprimary)

