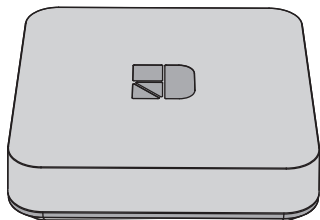


Tydom Home

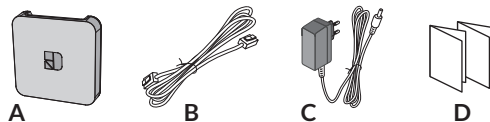
Smart home hub



www.deltadore.com

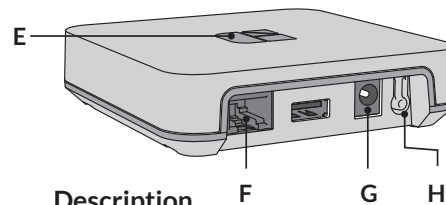


Presentation



Box contents

- A. Tydom Home
- B. Ethernet cable
- C. Mains supply
- D. Important Product Information



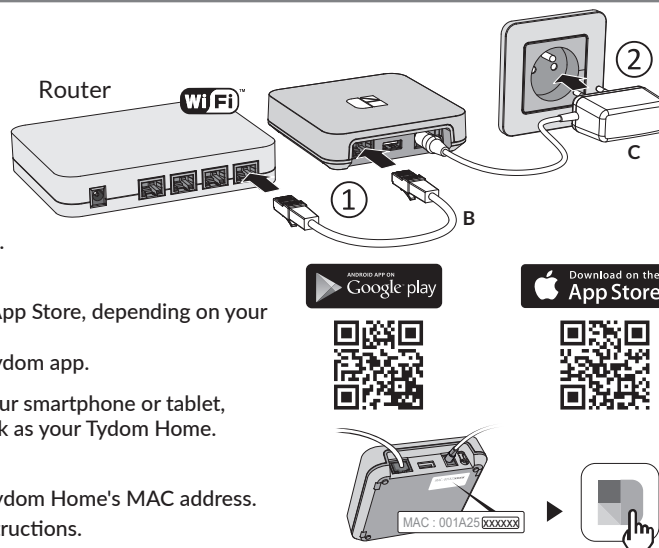
Description

- E. System status display LED
- F. Ethernet port
- G. Mains power socket
- H. Configuration/Information button

Installation

- 1 Connect your Tydom Home by **STRICTLY** following this order:
 - ① connect the Ethernet cable (B).
 - ② then, connect the mains power (C).

- 2 Download the Tydom app.
 - Log in to either the Google Play or App Store, depending on your device.
 - Search for and download the free Tydom app.
- 3 Activate the Wi-Fi connection on your smartphone or tablet, and connect to the same local network as your Tydom Home.
- 4 Configure the Tydom app.
 - Note the last 6 characters of your Tydom Home's MAC address.
 - Log in to the app and follow the instructions.



Technical specifications

| | |
|--|---|
| | Power supply via AC adapter Ktec: KSAS0050500100VED or SPC: ZZU1001-10050-2E AC values: 100-240V~ 50/60 Hz, 0,18A - DC: 5V= 1A Only these adapters should be used with the Tydom Home. |
| | X3D transmission frequency: 868.7 MHz to 879.2 MHz Maximum wireless power < 10mW - Category 2 receiver Zigbee transmission frequency: 2.4 GHz to 2.4835 GHz |
| | Maximum consumption (without USB connection): 0.9 W |
| | -20°C / +70°C |
| | -10°C / +40°C |
| | IP 30 |
| | 100 x 100 x 26 mm |

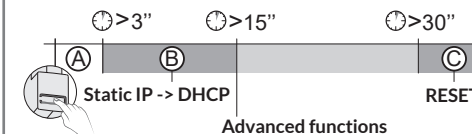
The connection quality of the product may be affected by different modifications of the IP architecture on which it operates. These modifications can be, but are not limited to, a change of hardware, a software update or configuration, work conducted on your operator's equipment or any other multimedia equipment such as tablets, smartphones, etc. IOS is a Cisco trademark or registered trademark in the United States and in other countries, and is used under licence. Android™ and Google Play are Google LLC registered trademarks. Wi-Fi™ is a trademark registered by Wi-Fi Alliance. Because of changes in standards and equipment, the characteristics given in the text and the illustrations in this document are not binding unless confirmed.

Help

| LED | System status |
|-----------------|--|
| Flashing white | System accessible locally and remotely, user connected |
| Steady white | System accessible locally and remotely |
| Flashing orange | System accessible locally, user connected |
| Steady Orange | System accessible locally |
| Steady Red | No IP address allocated |

Advanced functions

Below are the functions accessible depending on how long the button on the back of your Tydom Home is pressed.



A Secure connection and viewing connection status

Briefly press the button. LED displays for 10 seconds.

| | |
|--------------------|--|
| Flashing yellow | Static IP mode |
| Flashing blue | DHCP mode |
| Flashing blue (3x) | DHCP in progress Check the DHCP activation on the router |
| Flashing red | No network connection Check the Ethernet link |

B Change from static IP to DHCP

Press the button for 3 seconds until the pink LED flashes slowly. Release.

C Reset to factory settings

Press the button for 30 seconds until the LED stops flashing. Release.

| | |
|---------------|---|
| System status | - DHCP mode - Clear product associations |
|---------------|---|