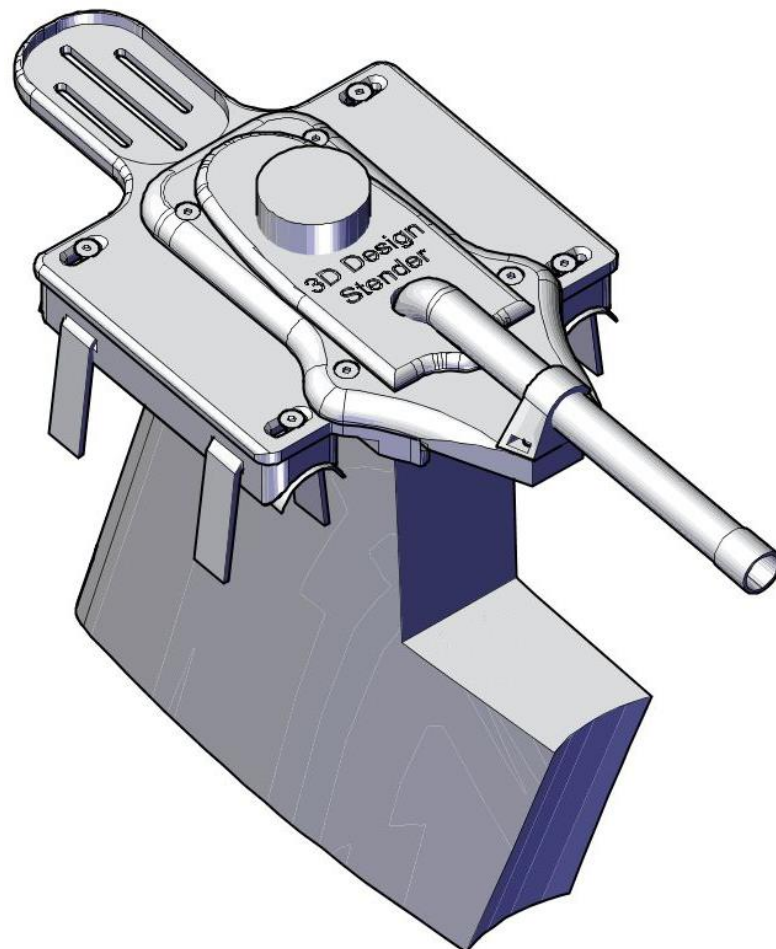
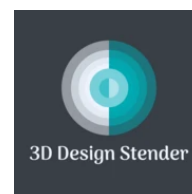


# Assembly instructions

## CUSTOM HYDRO KIT



Revision: 07.2020

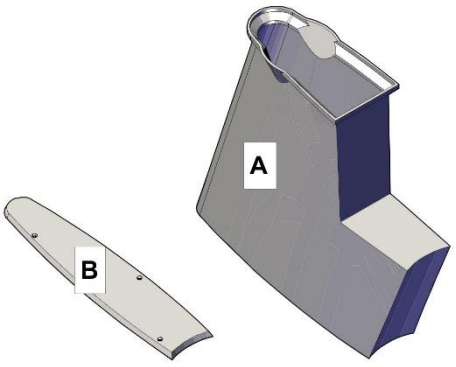
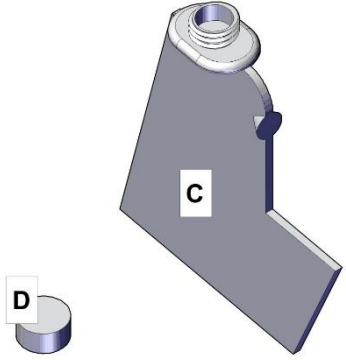
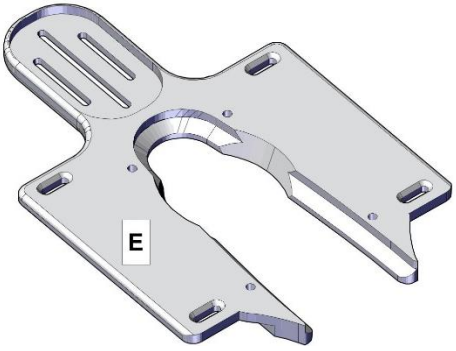
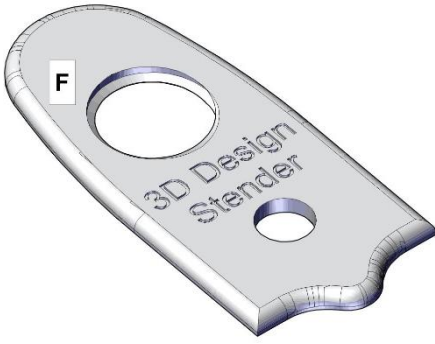
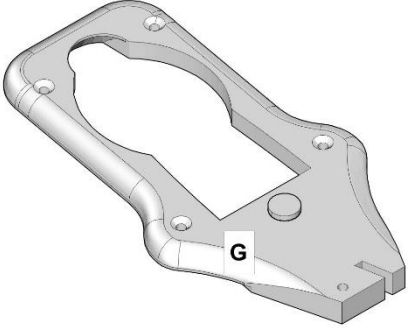

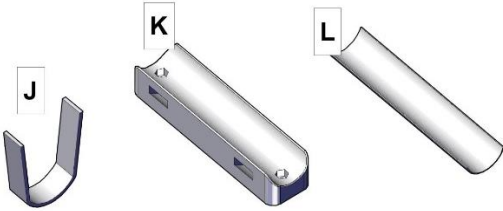



## Table of contents




<b>1</b>	<b>Package contents .....</b>	<b>2</b>
<b>2</b>	<b>Assembly.....</b>	<b>3</b>
2.1	Assembly step 1 .....	3
2.1.1	Spacer (K) .....	3
2.1.2	Basis (E) .....	4
2.1.3	AERO Container (A) .....	4
2.2	Assembly step 2 .....	5
2.3	Assembly step 3 .....	5
2.4	Assembly step 4 .....	6
2.5	Assembly step 5 .....	6
2.6	Assembly step 6 .....	7
2.7	Assembly step 7 .....	7
2.8	Assembly step 8 .....	8
2.9	Assembly step 9 .....	8
2.10	Assembly step 10 .....	9
2.11	Assembly step 11 .....	9
2.12	Assembly step 12 .....	10
2.13	Assembly step 13 .....	10
2.14	Assembly step 14 .....	11
2.15	Assembly step 15 .....	11
<b>3</b>	<b>Contact details and notes .....</b>	<b>12</b>

## Custom Hydro Kit – Assembly instructions

### 1 Package contents

 <p><b>B</b> AERO Container Bottom   <b>A</b> AERO Container</p>	 <p><b>D</b> Drinking Bladder Cap   <b>C</b> Drinking Bladder</p>
 <p><b>E</b> Basis</p>	 <p><b>F</b> Lid</p>
 <p><b>G</b> Intermediate Plate</p>	 <p><b>H</b> Drinking Straw Holder <b>I</b> Drinking Straw</p>
 <p><b>J</b> Velcro Strap - 4 pcs.   <b>K</b> Spacer - 2 pcs. <b>L</b> Protection Tape – 2 pcs.</p>	 <p><b>M</b> Hexagon Nut M3 12 pcs. (plus reserve)</p>

## Custom Hydro Kit – Assembly instructions

 <b>N</b> Allen Countersunk Head Screw M3x8 3 pcs. (plus reserve)	 <b>O</b> Allen Countersunk Head Screw M3x12 5 pcs. (plus reserve)
 <b>P</b> Allen Countersunk Head Screw M3x16 4 pcs. (plus reserve)	

## 2 Assembly

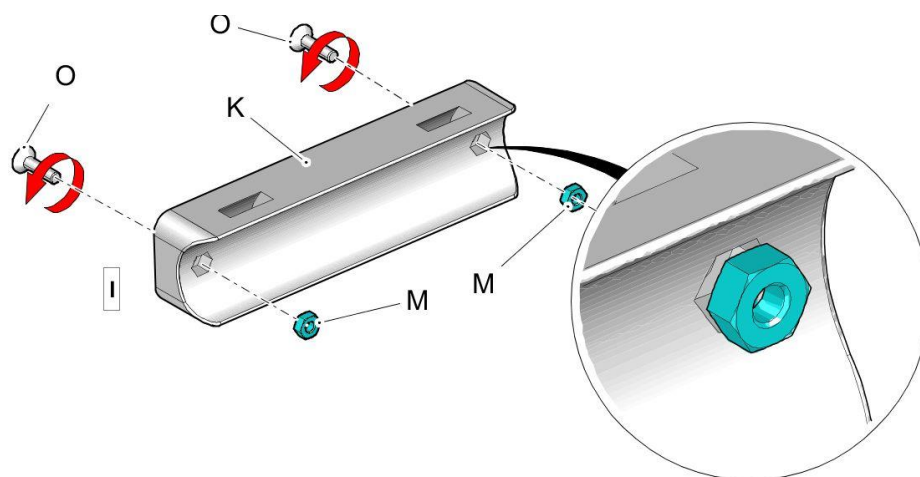
Required tools → Allen key, size 6

The use of a cordless screwdriver is **NOT** recommended. **NO** liability is accepted for any resulting damage to the CUSTOM HYDRO KID!

### 2.1 Assembly step 1

Insert a *Hexagon Nut* (**M**) into all hexagonal holes in the *Spacer* (**K**), *Base* (**E**) and *AERO Container* (**A**).

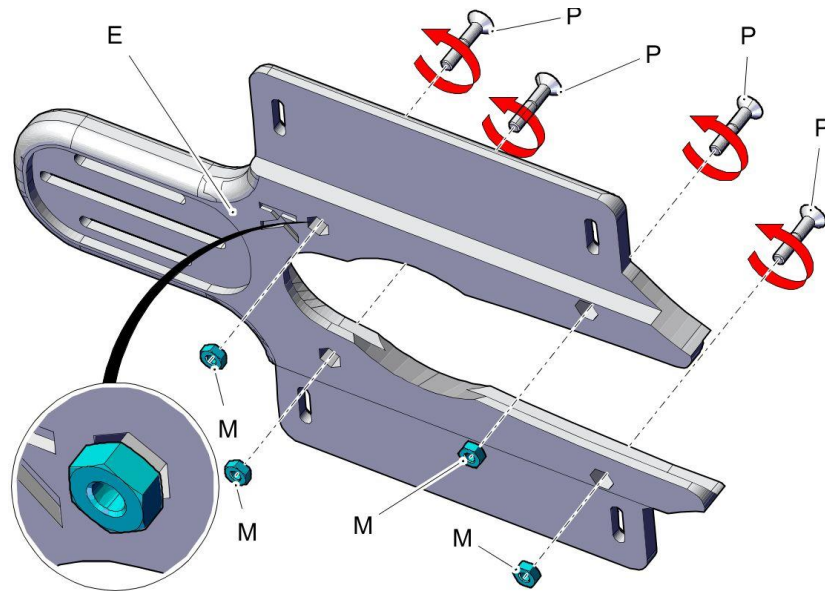
#### 2.1.1 Spacer (K)



Fit the *Hexagon Nuts* (**M**) to the hexagon holes and tighten them into the hexagon holes with the *Allen Countersunk Head Screws* (**O**).  
 Then remove the *Allen Countersunk Head Screws* (**O**) again.

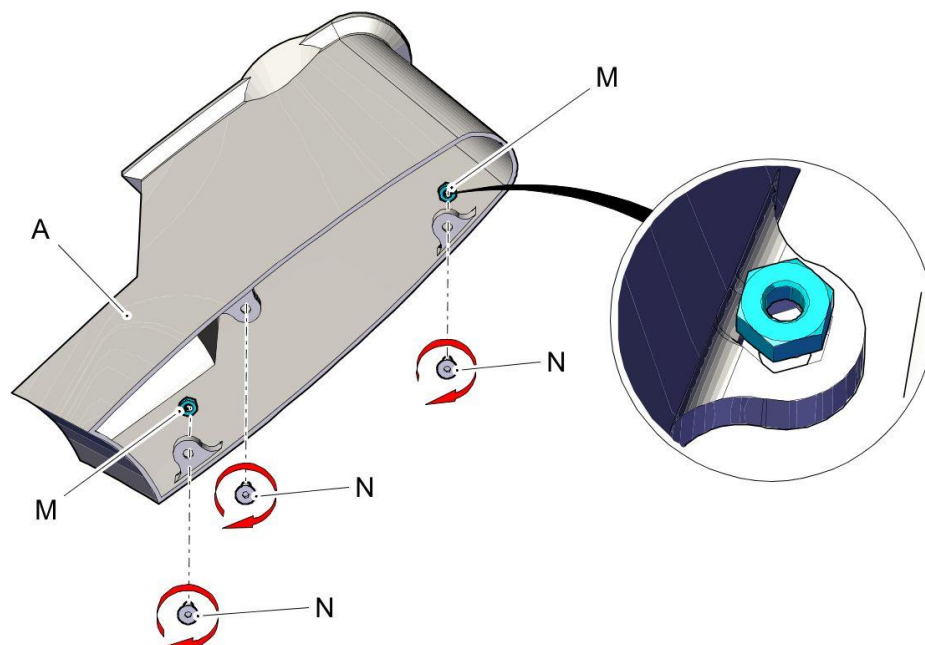
## Custom Hydro Kit – Assembly instructions

### 2.1.2 Basis (E)



Fit the *Hexagon Nuts (M)* to the hexagon holes and tighten them into the hexagon holes with the *Allen Countersunk Head Screws (P)*.  
Then remove the *Allen Countersunk Head Screws (P)* again.

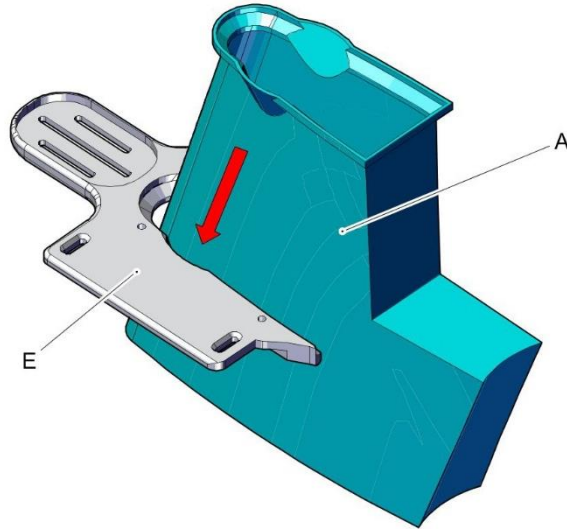
### 2.1.3 AERO Container (A)



Fit the *Hexagon Nuts (M)* to the hexagon holes and tighten them into the hexagon holes with the *Allen Countersunk Head Screws (N)*.  
Then remove the *Allen Countersunk Head Screws (N)* again.

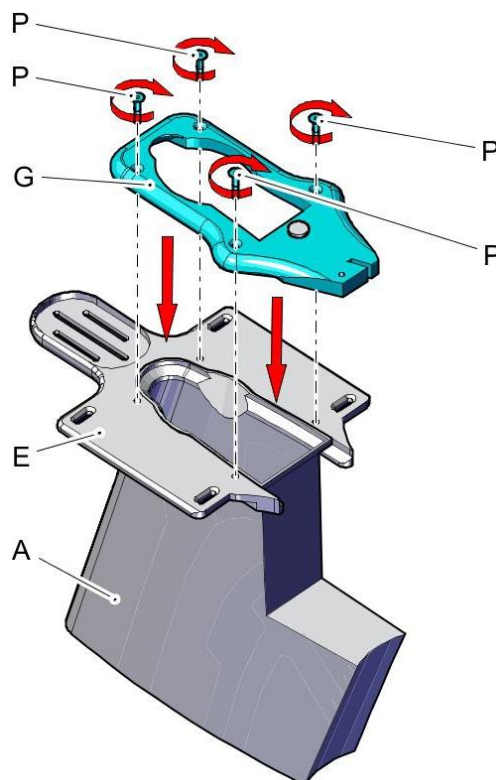
## Custom Hydro Kit – Assembly instructions

### 2.2 Assembly step 2



Insert the *AERO Container* (**A**) into the fit of the *Base* (**E**).

### 2.3 Assembly step 3

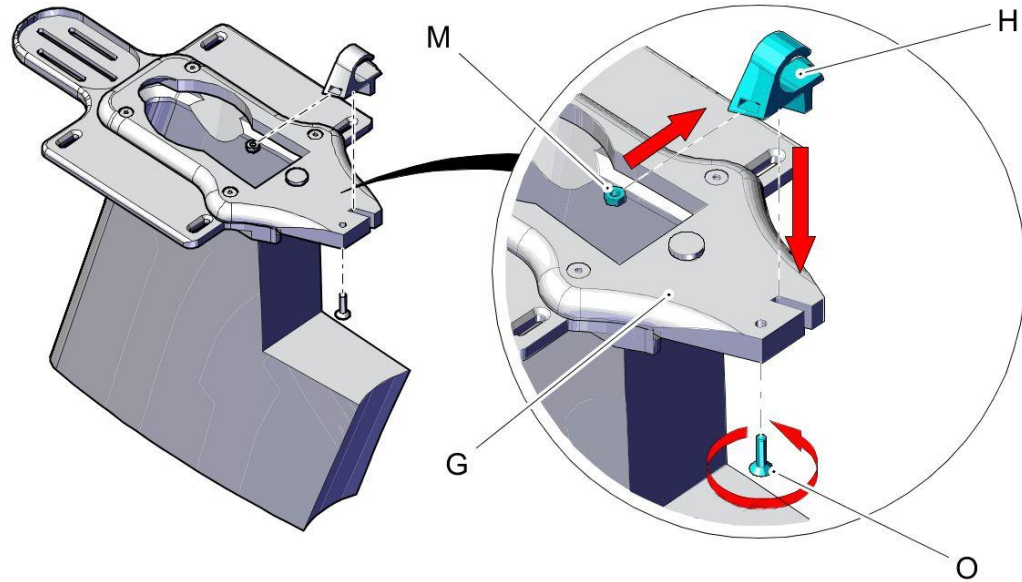


Screw the *Intermediate Plate* (**G**) onto the *Base* (**E**) with the *Allen Countersunk Head Screws* (**P**) and thus fix the *AERO Container* (**A**).



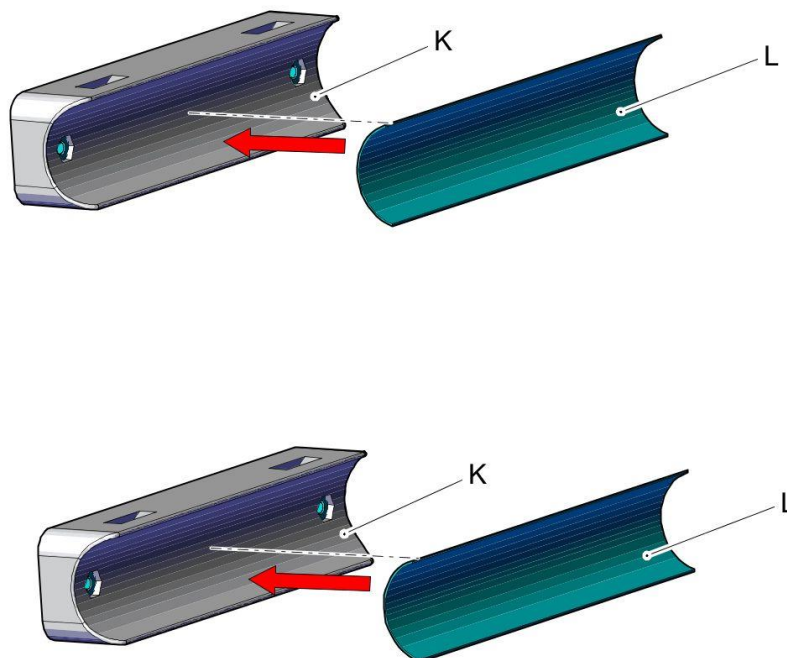
## Custom Hydro Kit – Assembly instructions

### 2.4 Assembly step 4



Insert the *nut (M)* into the holder of the *Drinking Straw Holder (H)*.  
Place *Drinking Straw Holder (H)* on the *Intermediate Plate (G)* and tighten with the *Allen Countersunk Head Screw (O)*.

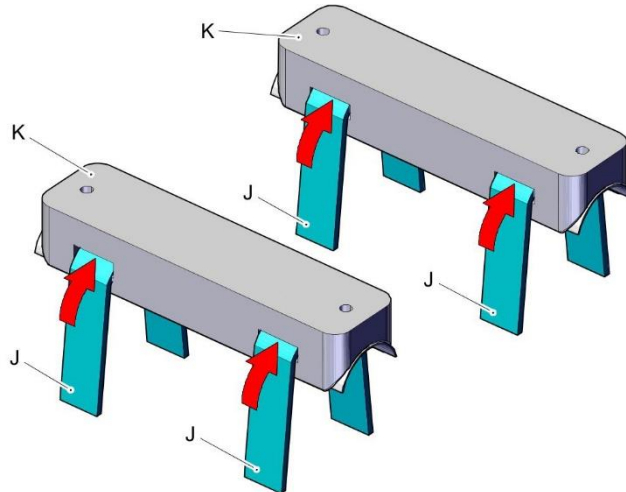
### 2.5 Assembly step 5



Stick the *Protection Tape (L)* into the curves of the *Spacers (K)*.

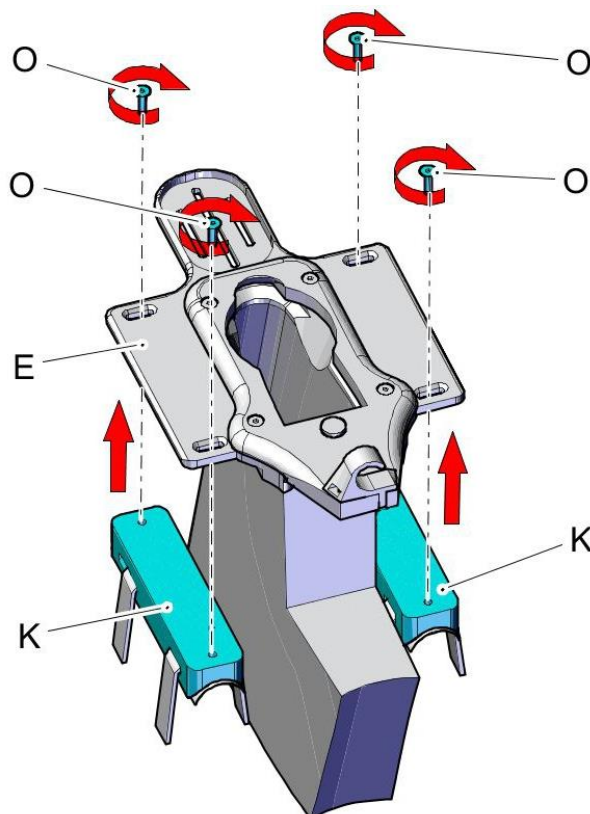
## Custom Hydro Kit – Assembly instructions

### 2.6 Assembly step 6



Thread the *Velcro Strips (J)* into the *Spacers (K)*.

### 2.7 Assembly step 7

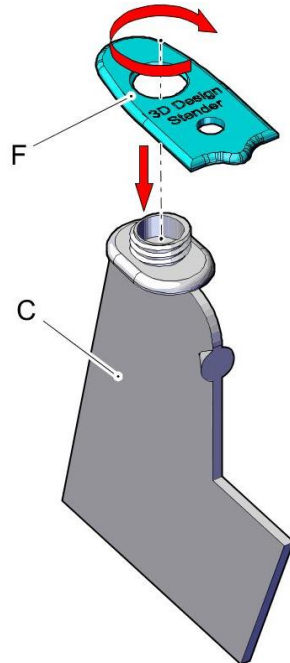


Screw the *Spacers (K)* "loosely" onto the *Base (E)* with the *Allen Countersunk Head Screws (O)*.



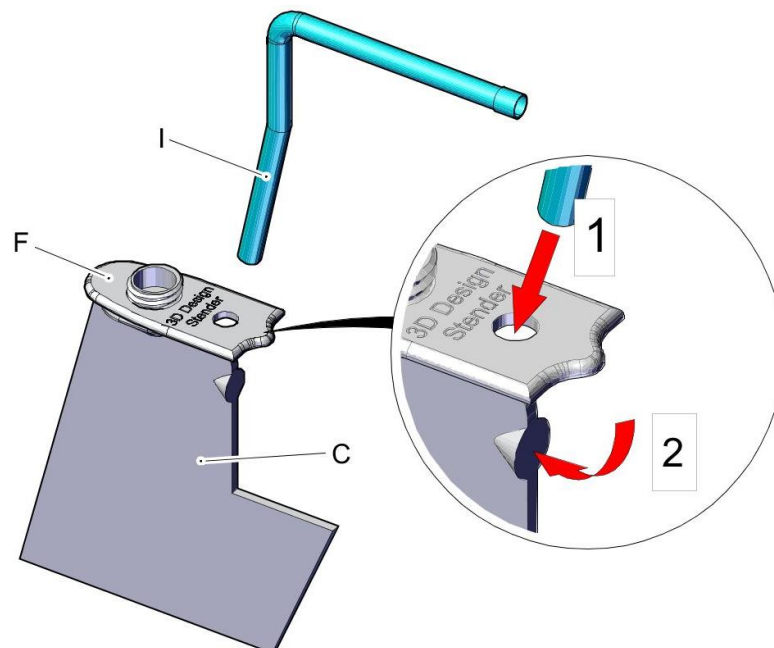
## Custom Hydro Kit – Assembly instructions

### 2.8 Assembly step 8



Screw the *Lid (F)* onto the *Drinking Bladder (C)*.

### 2.9 Assembly step 9

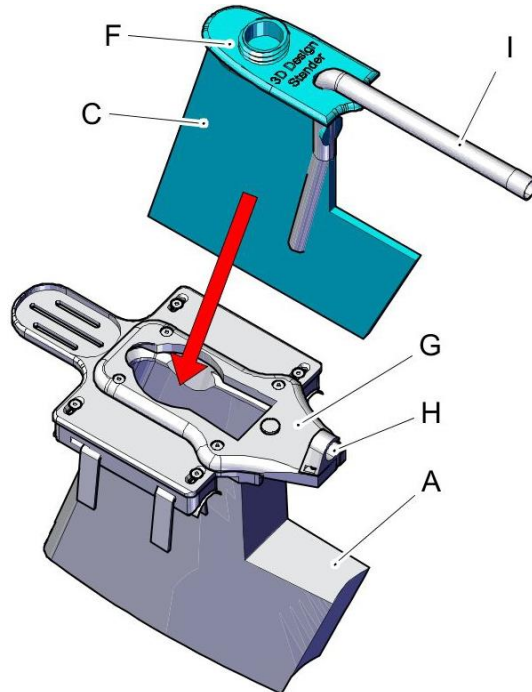


[ 1 ] Insert the *Drinking Straw (I)* through the *Lid (F)*.

[ 2 ] Insert the end of the *Drinking Straw (I)* into the *Drinking Bladder (C)*.

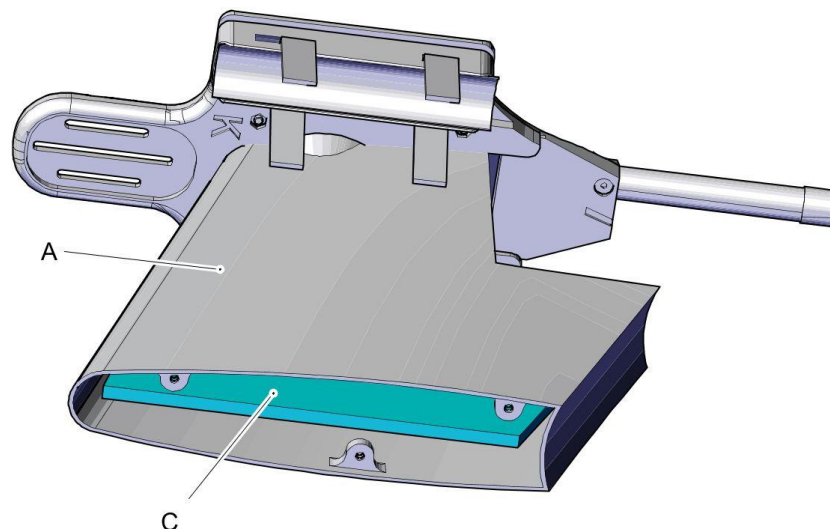
## Custom Hydro Kit – Assembly instructions

### 2.10 Assembly step 10



Carefully insert the *Drinking Bladder (C)* from above into the *AERO Container (A)* until the *Lid (F)* rests on the *Intermediate Plate (G)*.  
Clamp the *Drinking Straw (I)* under the *Drinking Straw Holder (H)*.

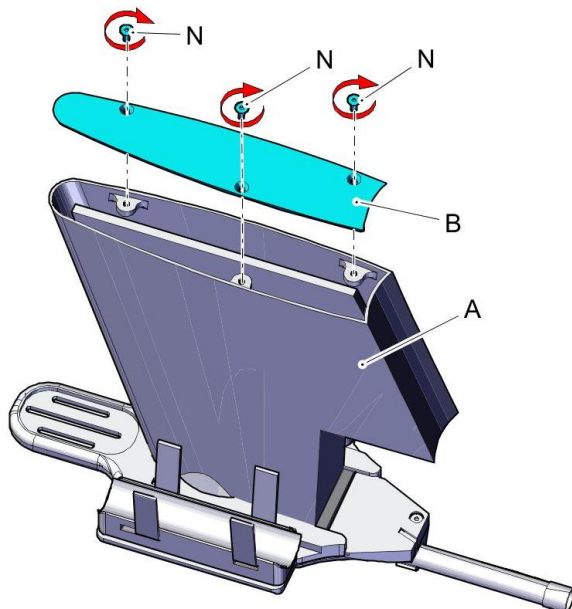
### 2.11 Assembly step 11



Carefully unfold/smoothly pull the *Drinking Bladder (C)* from below in the *AERO Container (A)*.  
For frame sizes S and XS, fold the *drinking bladder (C)* once if necessary.

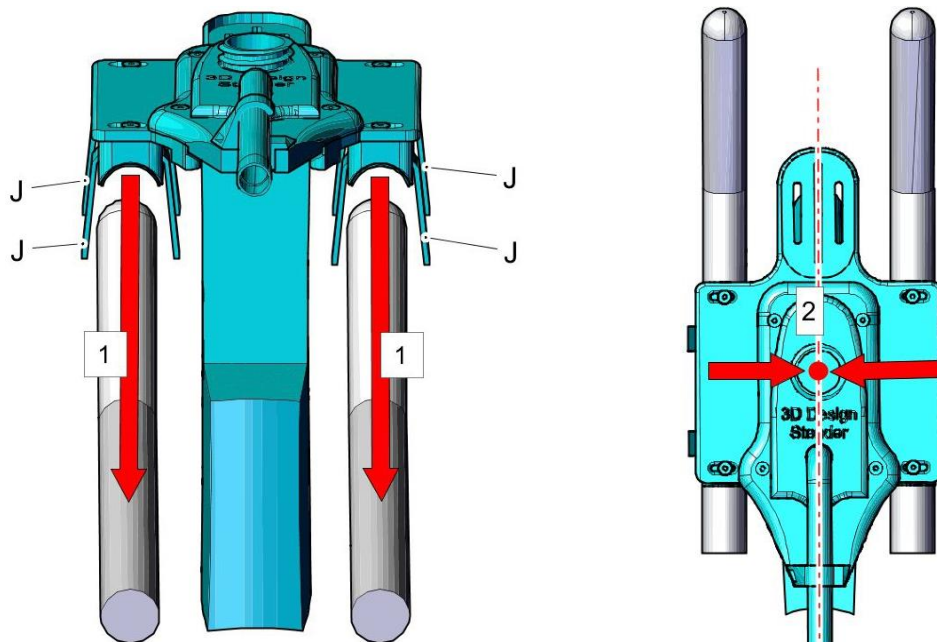
## Custom Hydro Kit – Assembly instructions

### 2.12 Assembly step 12



Screw the AERO Container Bottom (B) to the AERO Container (A) with the Allen Countersunk Head Screws (N).

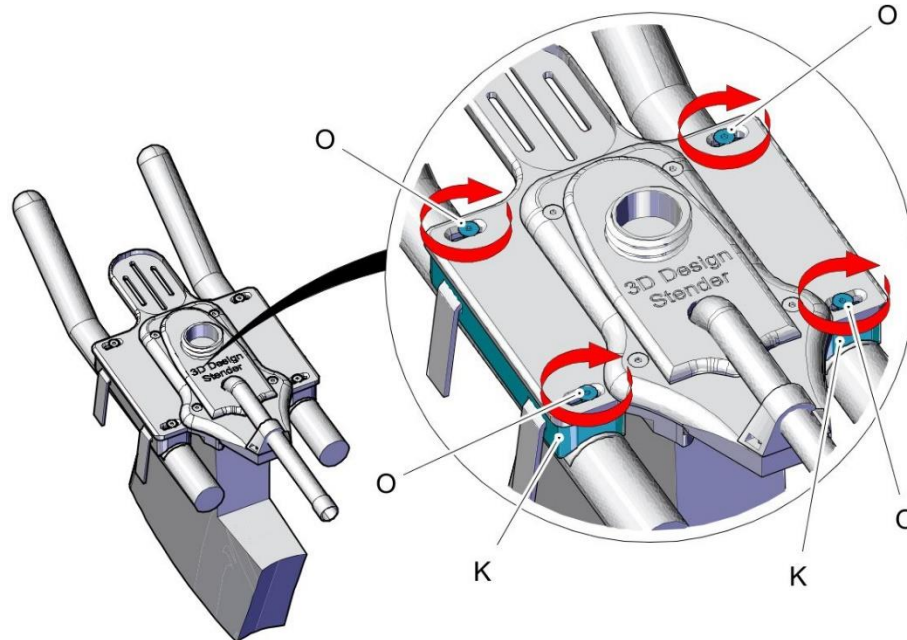
### 2.13 Assembly step 13



- [ 1 ] Place the CUSTOM HYDRO KIT on the extensions on the bicycle handlebars and fasten with the Velcro Straps (J).
- [ 2 ] Align the CUSTOM HYDRO KIT centrally.

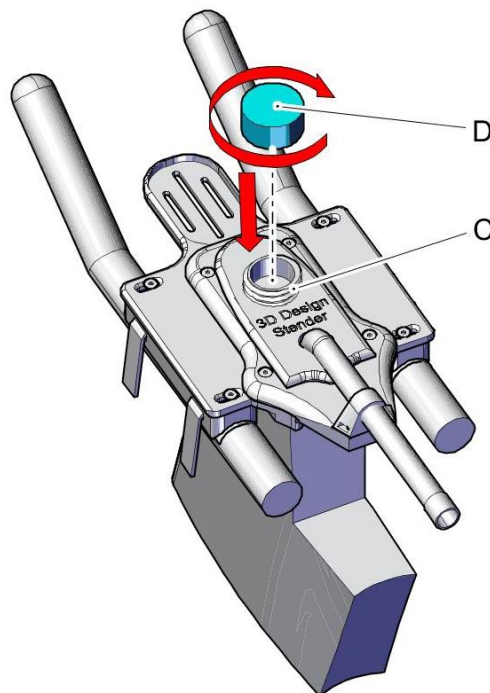
## Custom Hydro Kit – Assembly instructions

### 2.14 Assembly step 14



Tighten the *Spacers (K)* with the *Allen Countersunk Head Screws (O)*.

### 2.15 Assembly step 15



Screw the *Drinking Bladder Cap (D)* onto the thread of the *Drinking Bladder (C)*.



## Custom Hydro Kit – Assembly instructions

---

### 3 Contact details and notes

#### 3D Design Stender

Tim Stender

Email:.....[info@3ddesignstender.com](mailto:info@3ddesignstender.com)

Website:.....[www.3ddesignstender.com](http://www.3ddesignstender.com)

Youtube: .....3D Design Stender

Instagram:.....3ddesignstender