



# WIBC Mallet Audition

Not to be played with full band - solo mallet audition music

#1 Play chromatic scale full range of instrument, up and down, quarter note = 120 - 160

**Allegro** (M.M. ♩ = c. 120 - 160)



#2 Play the following etude, quarter note = 120 - 160

**Allegro** (M.M. ♩ = c. 120 - 160)



#3 Answer the following questions when you upload your mp3 (put in special notes box at time of upload)

- A. What is your secondary instrument strength (snare drum or timpani)?
- B. Do you feel comfortable tuning timpani by yourself?
- C. Can you play the piano (none, beginner, intermediate, advanced)?

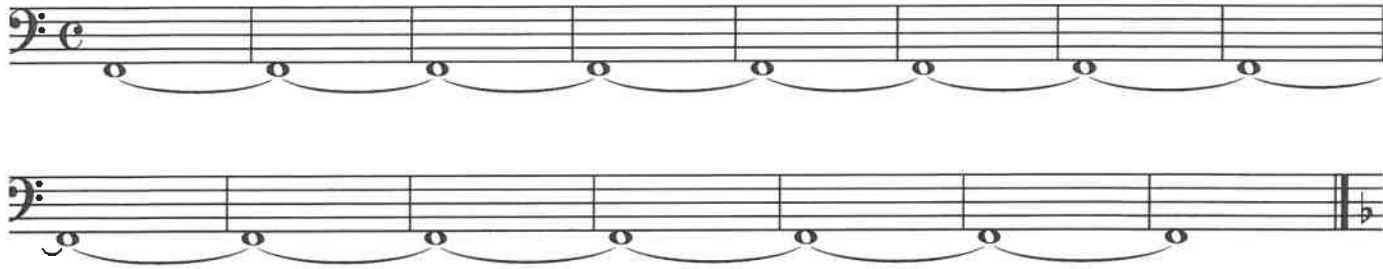
# WIBC Timpani Audition

Not to be played with full band - solo timpani audition music



1 Play long roll ff to pp to ff in 1 minute

**Moderato**



2 Play the etude below at a moderato tempo

**Moderato** (♩ = c. 108)



3 Answer the following questions when you upload your mp3 (put in special notes box at time of upload)

- .. What is your secondary instrument strength (snare drum or mallet percussion)?
- .. Do you feel comfortable tuning timpani by yourself?
- .. Can you play the piano (none, beginner, intermediate, advanced)?



# WIBC Snare Drum Audition

Not to be played with full band - solo snare drum audition music

#1 Play long roll open to closed to open in 1 minute

**Moderato**

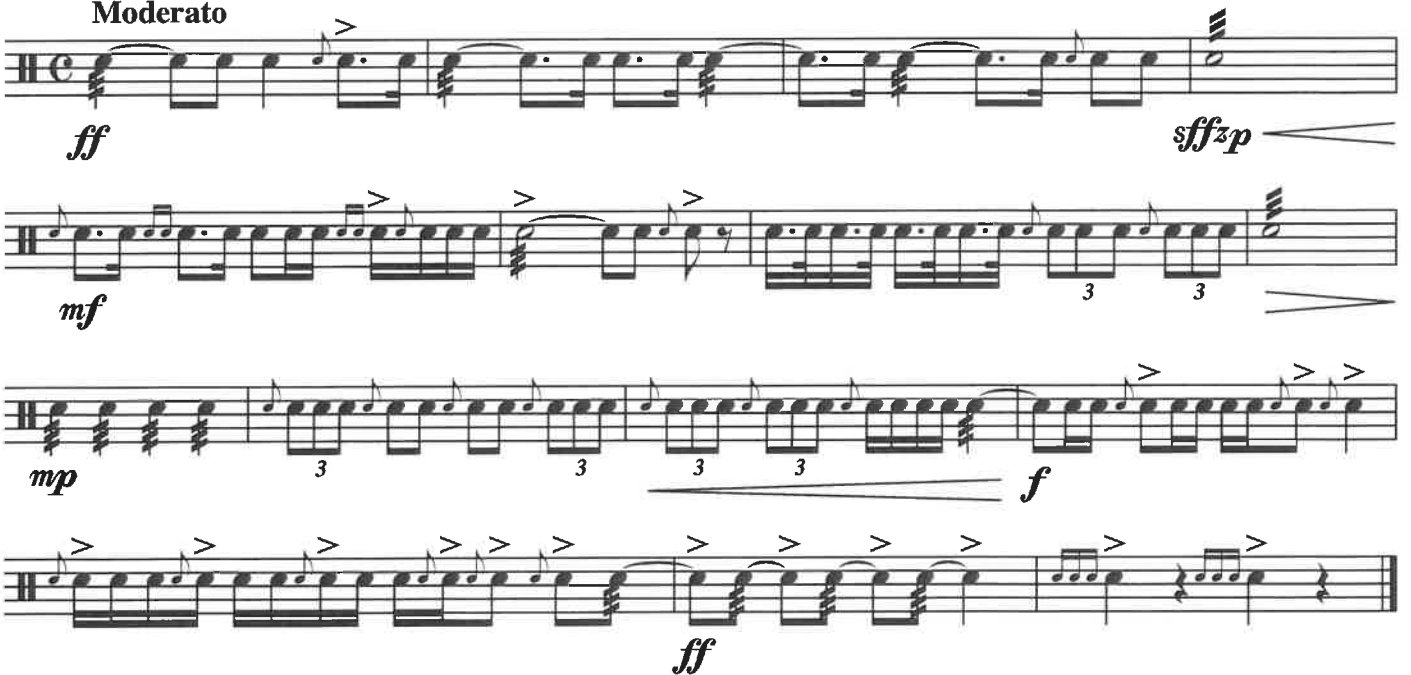


#2 Play single ratamacue (below) open to closed to open (play rudiment as many times as needed)



#3 Play the etude below at a moderato tempo

**Moderato**



#4 Answer the following questions when you upload your mp3 (put in special notes box at time of upload)

- A. What is your secondary instrument strength (timpani or mallet percussion)?
- B. Do you feel comfortable tuning timpani by yourself?
- C. Can you play the piano (none, beginner, intermediate, advanced)?