



CASTOHN[®]

true to form

Contents

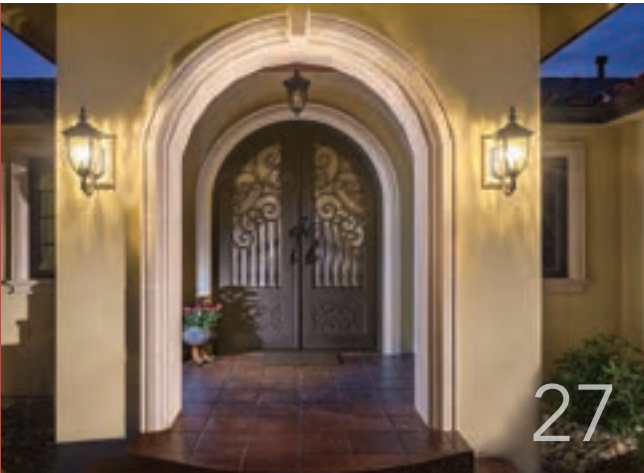
LANDSCAPE PRODUCTS



Landscape Products

Paving.....	4
Walls.....	14
Steps.....	21

BUILDING PRODUCTS



Building Products

Wall Caps and Post Caps.....	27
Trims, Keystones, and Mounting Blocks.....	30
Sills and Moldings.....	35
Sketch Your Project.....	38
Castohn Custom.....	39
Barriers and Wheelstops.....	40
Bio-Enhanced.....	41

KITS



Kits

Pre-Planned Patios.....	44
Fire Pit Kits.....	45
Bench Kits.....	46
Bar Kit.....	46

WHY WET CAST?

Wet cast brings out the fine details. Our modern wet cast technology consistently delivers the vivid colors, realistic shapes, and natural textures we all want to adorn our indoor and outdoor living spaces.

THE **CASTOHN**[®] DIFFERENCE

Our in-house design team doesn't just follow trends, it creates them. Our vision for the future of outdoor design enables us to develop a full line of architectural accessories that are built to last.

Every day, we're leveraging the latest engineering methods and technologies to produce high-quality elements that make your homes, gardens, and other outdoor living spaces even more beautiful.

Typical Dry Cast

Machine pressed shapes, grainy, fake joints, and harsh edges.



8 **seconds** in the mold
Rough abrasive textures

CASTOHN[®] Wet Cast

Natural stone castings with a realistic look and feel.



8 **hours** in the mold
Authentic stone textures

vs.

- More natural color & appearance
- Smoother & stronger
- Tighter surface matrix





PAVING

Whether you need a natural free-form look or a more formal appearance, we have a variety of paving products for beautiful and functional walkways and patios, with easy installation due to uniform depth.



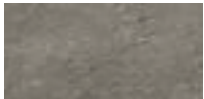
Dimensional Flagstone

Rosetta by Castohn

- Authentic natural slate texture
- Six unique shapes with 24 unique stone textures
- All sizes on every layer for simple installation
- Uniform thickness and accurate dimensions for fast installation and beautiful end results
- Consistent 2-inch thickness



Available Colors:



Silver Legacy



Western Buff



Pacific Mist

Made to Order:



Bluestone
Premium

*colors may vary,
see actual pallets

Product Data

- Six pieces per layer
- One layer = 1 pattern (12-1/4 square feet)
- One layer = 42" x 42" x 2"

Patio Layout



Pallet

- Pallet weight = 2,375 pounds
- 98 square feet per pallet
- 48 pieces per pallet in 8 layers

Walkway Layout



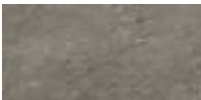
24" x 24" Flagstone

Rosetta by Castohn

- Authentic, natural slate texture
- Consistent 2-inch thickness
- Uniform thickness and accurate dimensions equal fast installations and beautiful end results



Available Colors:



Silver Legacy

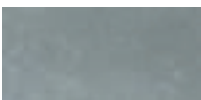


Western Buff



Pacific Mist

Made to Order:



Bluestone
Premium

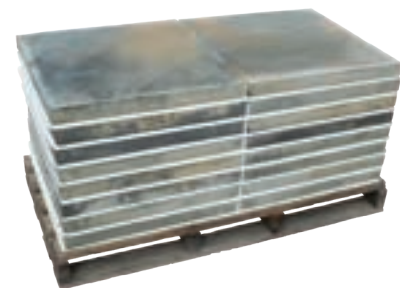
*colors may vary,
see actual pallets

Product Data

- Two pieces per layer
- One piece = 4 square feet
- One piece = 100 pounds

Pallet

- Pallet weight = 1,600 pounds
- 64 square feet per pallet
- 16 pieces per pallet



Grand Flagstone

Rosetta by Castohn

- Beautiful natural stone texture
- 15 unique shapes replicate large, irregular flagstone
- Fast installation with easy-to-install pattern
- Uniform thickness (1-3/4") for comfortable end results
- High strength concrete for long term durability



Available Colors:



Silver Legacy



Western Buff



Pacific Mist

Made to Order:



Bluestone
Premium

*colors may vary,
see actual pallets

Product Data

- 1 pallet = 90 s.f. (3/8" joints)
- Pallet weight = 2,000 pounds
- 8 layers per pallet
- Each layer = multiple pieces
- Sold by layer (11-1/4 square feet)

Each pallet contains 2 each of the following layers:



Layer 1
42" x 38"



Layer 2
42" x 38"



Layer 3
42" x 38"



Layer 4
42" x 38"

NOTES:

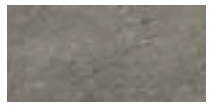
Outside dimensions of each layer are identical to all other layers, allowing any layer to be used anywhere in the pattern. For optimal color blending, mix and install product from several pallets simultaneously.

10" x 20" Linear Slate

- Natural slate texture
- Consistent size and thickness for fast installation
- Blended colors enhance the natural look
- Larger size and timeless slate texture create a simple yet elegant look and feel
- Use for accents, transition borders, and stair approaches



Available Colors:



Silver Legacy

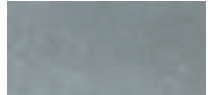


Western Buff



Pacific Mist

Made to Order:



Bluestone
Premium

*colors may vary,
see actual pallets

Product Data

- 10" x 20" x 2"
- 34 pounds each piece
- 1.4 square feet per piece

Pallet

- 64 pieces per pallet
- 89.6 square feet per pallet
- Pallet weight = 2,180 pounds
- 8 pieces per layer, 8 layers per pallet

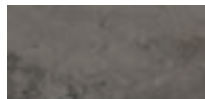


Olympic Paver Collection

- Large format paver for a timeless and contemporary look
- Exposed sand finish brings out the beauty of fine northwest aggregates
- Less prone to chipping due to eased edges
- Uniform size and thickness for fast installation
- Available for pedestal installations (special order)
- 1/8" tapered edge creates 1/4" joint spacing



Available Color:



Charcoal - Exp. Sand

Made to Order:



Natural Grey - Exp. Sand

*colors may vary, see actual pallets

Product Data

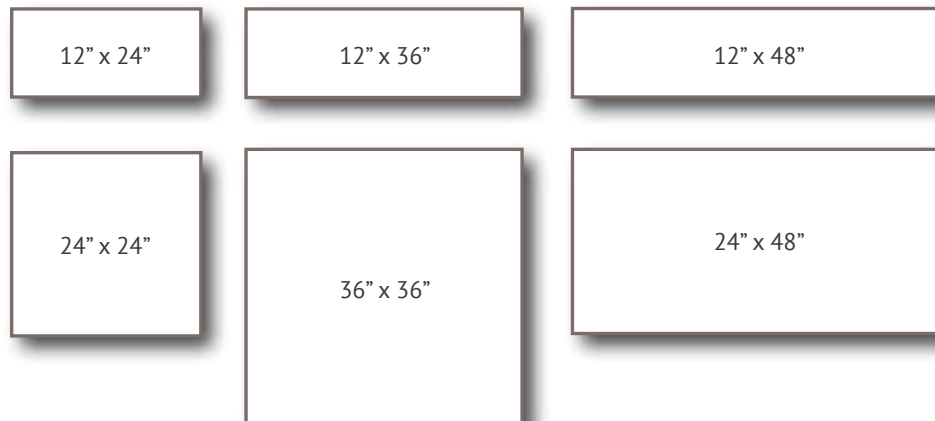
- 12" x 24" x 2-1/2" – 2 square feet – 63 pounds
- 12" x 36" x 2-1/2" – 3 square feet – 95 pounds
- 12" x 48" x 2-1/2" – 4 square feet – 125 pounds
- 24" x 24" x 2-1/2" – 4 square feet – 125 pounds
- 24" x 48" x 2-1/2" – 8 square feet – 250 pounds
- 36" x 36" x 2-1/2" – 9 square feet – 285 pounds
- Additional sizes available by custom order

Pallet (24" x 48")

- 8 pieces per pallet
- 250 pounds each, 2,100 pounds per pallet
- 64 square feet per pallet

Pallet (36" x 36")

- 8 pieces per pallet
- 285 pounds each, 2,600 pounds per pallet
- 72 square feet per pallet





Olympic Paver Uses

- Patterned designs
- Transitions, borders, bands
- Walkways

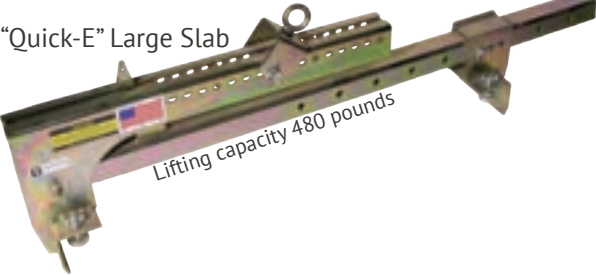
Large Slab Lifting Tools

Ergo XL



Ergo Assist Adapter

“Quick-E” Large Slab

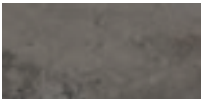


42" Super Pavers

- Flamed stone texture means no formwork or on-site finishing needed
- Fast installation; install year-round in any weather
- Factory controlled cure for longer life
- Textured surface for skid (slip) resistance

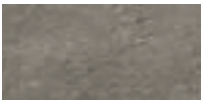


Available Color:



Charcoal

Made to Order:



Silver Legacy



Western Buff
*colors may vary, see actual pallets

Product Data

- 42" x 42" x 4"
- 12-1/4 square feet each
- 600 pounds each

Pallet

- 6 pieces per pallet
- 73-1/2 square feet per pallet
- Pallet weight = 3,600 pounds

Finish

- Flamed texture



Old Mission Pavers

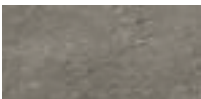
Rosetta by Castohn

Wouldn't you rather drive your car onto a cobblestone courtyard in old world Europe than onto a concrete slab? Old Mission Pavers will transform any drab backyard or driveway into an Italian veranda. For patio use, we recommend pairing these pavers with a bottle of your favorite Merlot.

- Is that time-worn cobblestone or concrete? With Old Mission, it's difficult to tell.
- Wide joints allow for use in eco-friendly, permeable applications.



Available Colors:



Silver Legacy



Western Buff



Pacific Mist

Made to Order:



Bluestone

Premium

*colors may vary,
see actual pallets

Product Data

- 6" x 9", 9" x 9", 12" x 9"
- 10, 15, & 20 pound pieces

Pallet

- 8 layers per pallet
- 100 square feet per pallet
- 12-1/2 square feet per layer
- Pallet weight = 3,050 pounds







WALLS

Create timeless beauty for your outdoor world. Walls add function and elegance in a natural way. Your walls can be free standing or used to hold back soils depending on what effect you're after. Finished on both sides, our selection of naturally colored wall systems are quick and easy to install.

Belvedere Wall

Rosetta by Castohn

Inspired by the rolling hills of the English countryside, the Belvedere wall collection replicates quarried stone with more charm than any other man-made product you have ever seen. The only hitch with Belvedere may be that while enjoying your garden landscape, you won't be able to tell whether you're in the suburbs or the Shire.

- 64 unique stone textures look just like well-crafted natural stone
- Great for seat walls, pillars, and structural retaining walls
- Consistent dimensions and pre-developed patterns ensure a headache-free project
- Often used as a free-standing wall - stones are finished on both sides



Available Colors:



Silver Legacy



Western Buff



Pacific Mist

*colors may vary, see actual pallets

Belvedere Wall Pallet

- 27 square feet per pallet
- Sold by section (9 square feet)
- Pallet weight = 2,450 pounds
- 12 pieces of each size



Belvedere Corner Pallet

- 24 square feet
- Pallet weight = 1,550 pounds
- Sold by section (1-1/2 square feet)
- 16 pieces of each size



Coping Pallet

- 66 linear feet, 1,500 pounds
- All caps 2-1/4" thick nominal
- Sold by the layer (11 linear feet)



Kodah Wall

Rosetta by Castohn

We wouldn't be surprised if your first look at a Kodah retaining wall makes you want to do a double take. Go ahead and check it out – the large dimensions and subtle character of these walls beg for attention.

- Four large, multi-textured unit sizes and corner blocks imitate snapped limestone
- Modern character gracefully compliments plants and flowers
- Consistent block heights make installation a snap, for faster project completion
- Often used as a free-standing wall - stones are finished on both sides



Available Colors:



Silver Legacy



Western Buff



Pacific Mist

*colors may vary,
see actual pallets

Wall Pallet

- 21 square feet per pallet
- Pallet weight = 2,400 pounds
- 18 pieces per pallet
- 4 unique sizes, 24 unique textures



12" x 6" x 10-1/2"



21" x 6" x 10-1/2"



30" x 6" x 10-1/2"



42" x 6" x 10-1/2"



Corner Pallet

- 31.5 square feet per pallet
- Pallet weight = 2,400 pounds
- 24 corners per pallet



Corners

21" x 6" x 10-1/2"



Outcropping

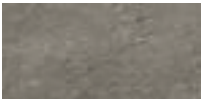
Rosetta by Castohn

There is a giant difference between Outcropping and your average landscaping wall. The massive size of the Outcropping system makes it visually striking and easy to install.

- Pieces are an eye-catching 2 to 6 feet in length, and 6 to 24 inches in height
- 12 different pieces come together randomly to look like a real stone wall
- Installation guides offer your contractor hassle-free installation for a trouble-free project



Available Colors:



Silver Legacy



Western Buff

Made to Order:



Pacific Mist
*colors may vary, see actual pallets

Pallet A

18 square feet, 4,000 pounds



12" x 3'6"



12" x 4'



12" x 5'



12" x 5'6"

Pallet C

18 square feet, 4,000 pounds



6" x 2'



6" x 3'



18" x 5'



24" x 4'

Pallet B

18 square feet, 4,000 pounds



6" x 2'



6" x 3'



12" x 3'



6" x 4'



12" x 4'6"



12" x 6'

Dimensional Wall

Rosetta by Castohn

You will never tire of seeing a Dimensional Wall outside your window. Traditional design, chiseled texture, and organic tones draw together the elements of your landscape design with noticeable sophistication.

- Classic natural textures compliment a variety of landscape styles
- Freestanding seat walls made possible by texture on both sides of each unit
- Four inch height creates clean, consistent lines
- Often used as a free-standing wall - stones are finished on both sides



Available Colors:



Silver Legacy



Western Buff

Made to Order:



Pacific Mist

*colors may vary, see actual pallets

Dimensional Straight Block

- 28 pounds each
- Pallet weight = 2,200 pounds
- 75 pieces per pallet in 5 layers



Straight Block
12" x 8" x 4"



Dimensional Wedge Block

- 20 pounds each
- Pallet weight = 2,250 pounds
- 100 pieces per pallet in 5 layers



Wedge Block
12" x 8" x 7-1/2" x 4"



*Dimensions are nominal

Claremont Wall

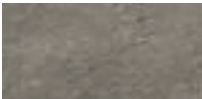
Rosetta by Castohn

A wall of wonderful distinction. This classic wall collection boasts an impressive snapped limestone texture and exquisite style. The crisp chiseling is indistinguishable from natural stone.

- Modern linear proportions for elegant outdoor living
- Relaxing seat walls made possible by texture on both sides of each piece
- Often used as a free-standing wall - stones are finished on both sides



Available Colors:



Silver Legacy



Western Buff

Made to Order:



Pacific Mist
*colors may vary, see actual pallets

Claremont Wall Pallet

- Pallet weight = 2,500 pounds
- 50 pieces per pallet
18" x 8" x 4" (25) and 24" x 8" x 4" (25)
- Sold in pairs (one 18" and one 24")



18" Wall Block
18" x 8" x 4"



24" Wall Block
24" x 8" x 4"



Claremont Corner Pallet

- 40 corner units per pallet
- Pallet weight = 2,100 pounds
- One pallet contains enough corners to build a 30" x 30" pillar, 40" tall
- Pillar cap sold separately



Corner Block
22" x 8" x 4"





STEPS

Our step collections combine the rugged attractiveness of natural stone with the safety and comfort of uniform rise.



Irregular Steps

Rosetta by Castohn

Rosetta's Irregular Step Collection sweetens your home's surroundings with subtle and natural color and texture.

- Simple installation process for fast project completion
- Consistent 7-inch rise
- Packaged 6 steps per pallet, random assortment of sizes and textures



Available Colors:



Silver Legacy



Western Buff



Pacific Mist

*colors may vary, see actual pallets

Irregular Steps

- 6 steps per pallet with 12 unique faces
- Palletized with blended pieces
- Pallet weight = 3,100 pounds



7" Rise - 349 pounds
3'6" x 1'5"



7" Rise - 476 pounds
3'6" x 2'2"



7" Rise - 512 pounds
4' x 2'



7" Rise - 567 pounds
4' x 2'4"



7" Rise - 458 pounds
4'6" x 1'10"



7" Rise - 600 pounds
5' x 2'

6' Irregular Steps

- 3 steps per pallet with 6 unique faces
- Pallet weight = 3,800 pounds



72" x 30" x 7"



Dimensional Steps

Rosetta by Castohn

Rosetta Dimensional Steps make sense for any design. Each chiseled edge mimics artisan-cut real stone.

- Available lengths include 3, 4, and 6 feet and widths of 18, 24, and 30 inches to suit a variety of design needs
- All steps are available in a variety of colors to coordinate with other Rosetta Hardscapes elements
- The consistent 7-inch rise gives your landscape the perfect lift



Available Colors:



Silver Legacy



Western Buff



Pacific Mist

*colors may vary,
see actual pallets

Dimensional Steps

- Palletized with one size per pallet



72" x 30" x 7"
1,320 pounds each
3 per pallet



48" x 18" x 7"
455 pounds each
6 per pallet



36" x 18" x 7"
375 pounds each
6 per pallet



48" x 24" x 7"
675 pounds each
6 per pallet



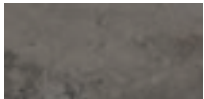
Stria Steps

Our Stria Step has a unique, bold texture that is new to the Pacific Northwest.

- Unique texture replicates natural weathering
- Consistent 6-inch rise equals fast installation and safe results
- Significant striated texture creates a non-slip surface
- Available in 3-foot and 4-foot widths



Available Color:



Charcoal

*color may vary,
see actual pallets

Product Data

- Palletized with one size per pallet



36" x 18" x 6"
340 pounds each



48" x 18" x 6"
450 pounds each



Path & Stepping Stones

Easily lay a charming garden walkway with various colors and textures that will compliment your existing backyard environment.

- 8 unique shapes for a rustic, authentic stone appearance
- Wet cast for long term durability
- Crowned top keeps your foot placement dry



Available Colors:



Pacific Mist (shown)



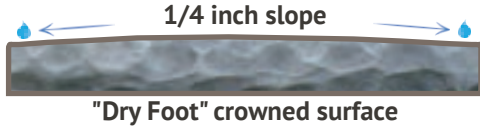
Silver Legacy



Western Buff
*colors may vary, see actual pallets

Pallet

- Avg. stone size 17" x 20" x 2-1/2"
- 24 pieces per pallet
- Pallet weight = 1,420 pounds



Bordo Stone Edge

Rosetta by Castohn

Easy to lay, versatile edging for planter beds, wall accent, and paver accent.

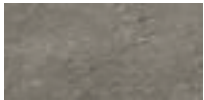
- Natural cleft stone top
- 32 unique stone textures
- Very easy to install with standard sizes
- Consistent heights



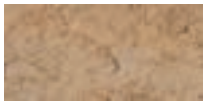
Available Colors:



Pacific Mist (shown)



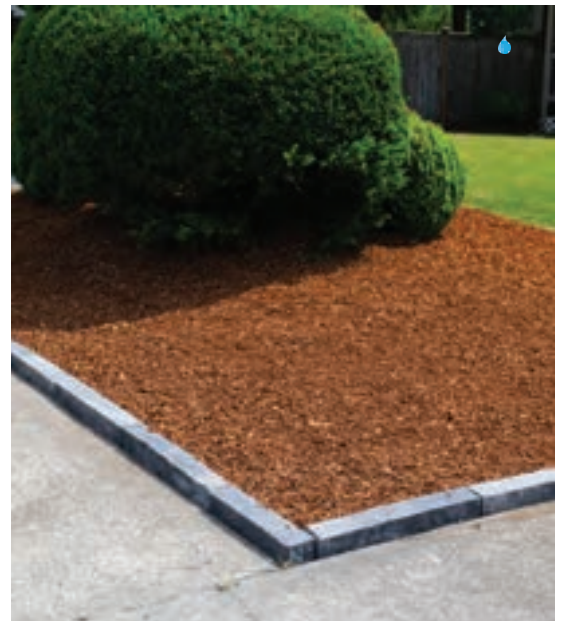
Silver Legacy



Western Buff
*colors may vary, see actual pallets

Pallet

- 96 pieces per pallet = 48 pairs of:
18" x 4" wide x 3-5/8" tall
24" x 4" wide x 3-5/8" tall
- 168 linear feet per pallet
- Pallet weight = 2,300 pounds
- 6 layers per pallet
- Sold in pairs (one 18" and one 24")
- One pair = 3-1/2 linear feet



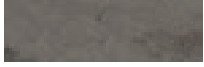


WALL & POST CAPS

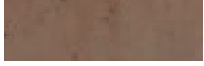
Capping walls and posts will add an elegant finishing touch to the project. These caps are as beautiful as the walls they finish.

Stone Texture, Chiseled Edge Caps

Available Colors:



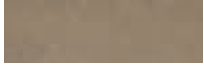
Charcoal



Coffee



Smoke



Saddle Tan

*colors may vary, see actual pallets

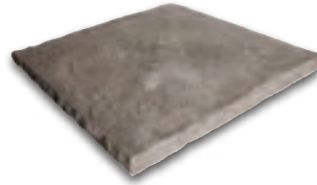


Flat Wall Cap

- Stone texture with chiseled edges and 2-1/2" high face

Available Sizes:

6" x 36", 10" x 36", 12" x 36", 14" x 36", 16" x 36"



Flat Post Cap

- Stone texture with chiseled edges and 2-1/2" high face

Available Sizes:

20" x 20", 24" x 24", 30" x 30", 36" x 36"



Peaked Wall Cap

- Stone texture with chiseled edges and 2-1/2" high face

Available Sizes:

10" x 20", 12" x 20", 16" x 20"



Peaked Post Cap

- Stone texture with chiseled edges and 2-1/2" high face

Available Sizes:

18" x 18", 20" x 20", 22" x 22", 24" x 24", 26" x 26", 30" x 30", 32" x 32", 36" x 36", 42" x 42"



Half Cap

- Stone texture with chiseled edges and 2-1/2" high face with 6" x 6" hole

Available Sizes:

18" x 9", 20" x 10", 22" x 11", 24" x 12", 26" x 13", 30" x 15", 32" x 16"



Post Cap with Electrical Hole

- Stone texture with chiseled edges and 2-1/2" high face with 3" PVC

Available Sizes:

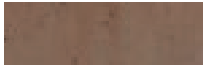
18" x 18", 20" x 20", 22" x 22", 24" x 24", 26" x 26", 30" x 30", 32" x 32", 36" x 36", 42" x 42"

Flamed Texture Caps

Available Colors:



Charcoal



Coffee

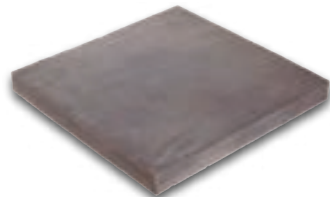


Smoke



Saddle Tan

*colors may vary, see actual pallets



Flat Post Cap (or Hearthstone)

- Flamed texture top and four sides with 2" High Face

Available Sizes:

20" x 20", 26" x 26"



Flat Wall Cap (or Paver)

- Flamed texture top and four sides with 2" High Face

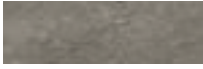
Available Sizes:

10" x 20", 13" x 26"

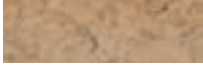
Stone Texture, Rustic Edge Caps

Rosetta by Castohn

Available Colors:



Silver Legacy



Western Buff



Pacific Mist

*colors may vary,
see actual pallets



Belvedere Column Cap

- 2-1/2" high

Available Sizes:
27" x 27"



Belvedere Coping

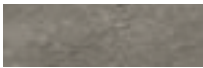
- Flat wall cap
- 2-1/4" high
- Sold by linear foot
- Minimum purchase is 1 section = 11 linear ft

Available Sizes:
10-1/4" wide x mixed lengths

Stone Texture, Dressed Edge Caps

Rosetta by Castohn

Available Colors:



Silver Legacy

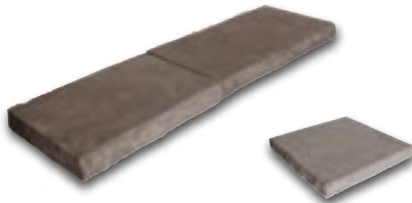


Western Buff



Pacific Mist

*colors may vary,
see actual pallets



Dimensional Coping w/End Cap

- Flat wall cap
- 2-1/2" high
- Sold by linear foot
- Minimum purchase is 1 section = 10.6 linear ft
- 6 sections per pallet

Available Sizes:
12-1/2" x 18", 12-1/2" x 24",
12-1/2" x 19" end cap

One Section / Layer

12-1/2x24	12-1/2x18
12-1/2x24	12-1/2x18
12-1/2x24	12-1/2x19 END CAP



Dimensional Column Cap

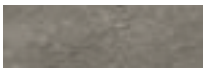
- Flat wall cap
- 2-1/2" high

Available Sizes:
2-1/2" x 24" x 24"

Flamed Texture, Bullnose Edge Caps

Rosetta by Castohn

Available Colors:



Silver Legacy



Western Buff

Made to Order:



Bluestone

*colors may vary,
see actual pallets



Bullnose Cap

- Coping

Available Sizes:
22" x 14" x 2"



Bullnose Cap Corner (Left & Right)

- Coping

Available Sizes:
22" x 14" x 2"



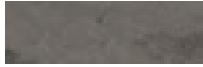


TRIMS, KEYSTONES, AND MOUNTING BLOCKS

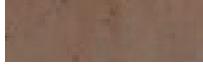
Architectural beauty is tied together with trim. Whether Rustic, Classic, or Contemporary, our large format trims cover more area than their counterparts. Our variety of textures will blend nicely with already existing trim.

Trim Stones

Available Colors:



Charcoal



Coffee



Smoke



Saddle Tan

*colors may vary, see actual pallets

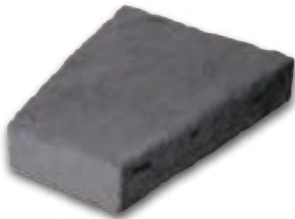


Trim Stone

- Stone texture

Available Sizes:

6" x 8" x 1-1/2"



Keystone Trim Stone

- Stone texture

Available Sizes:

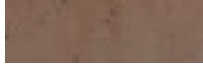
9-1/2" high x 8" wide top, 5" wide base x 2" thick

Fancy Keystones made to order

Available Colors:



Charcoal



Coffee



Smoke



Saddle Tan

*colors may vary, see actual pallets



Arched Top Keystone

- High arched top

Available Sizes:

12" x 9" x 4-1/8" thick at center

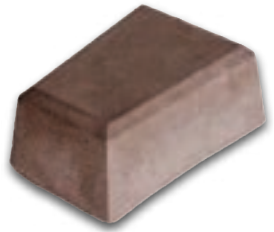


Square Top Keystone

- High square top

Available Sizes:

12" x 9-7/8" x 3-1/2" thick at center



Beveled Smooth Keystone

- Beveled edges and smooth texture

Available Sizes:

8" x 4" x 3" thick, 10" x 5" x 3" thick



Split Face Keystone

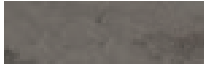
- Split face texture center

Available Sizes:

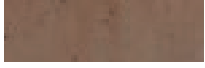
10" x 6" x 3" thick

Mounting Blocks

Available Colors:



Charcoal



Coffee

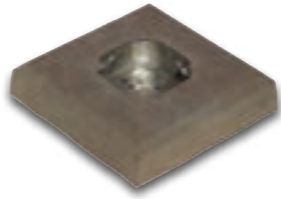


Smoke



Saddle Tan

*colors may vary,
see actual pallets



Round Electrical Box

- Round electrical block (MB1)

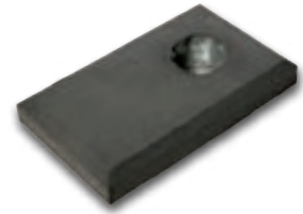
Available Sizes:
8" x 8" x 2"



Round Electrical Box

- Round electrical block (MB2)

Available Sizes:
8" x 12" x 2"



Round Electrical Box

- Round electrical block (MB11)

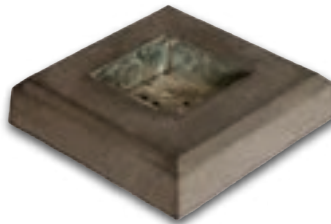
Available Sizes:
9" x 15" x 2"



Single Electrical Box

- Single electrical block (MB3)

Available Sizes:
6" x 8" x 2"



Double Electrical Box

- Double electrical block (MB4)

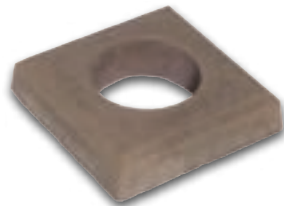
Available Sizes:
8" x 8" x 2"



Doorbell Block

- Doorbell mounting block (MB6)

Available Sizes:
6" x 8" x 2"



Square Dryer Vent

- Dryer vent block (MB9)

Available Sizes:
8" x 8" x 2"



Vent Block

- Vent block

Available Sizes:
12" x 18" x 2"



Water Block

- Water mounting block (MB5)

Available Sizes:
6" x 8" x 2"



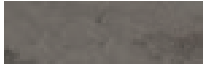
Numbers

- Address block numbers

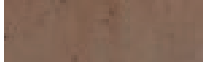
Available Sizes:
6" x 8" x 1-1/2"

Hearthstones

Available Colors:



Charcoal



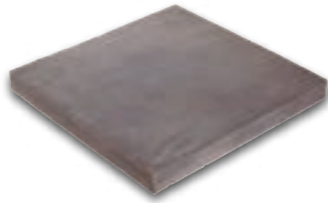
Coffee



Smoke



Saddle Tan



Hearthstone / Flat Post Cap

- Flamed texture

Available Sizes:

20" x 20" x 2", 26" x 26" x 2"

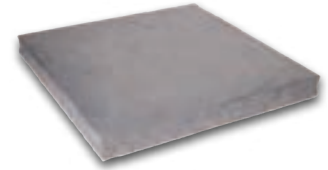


Hearth

- Stone texture and chiseled edge (front and two sides)

Available Sizes:

78" x 19" x 2-1/2"



Hearthstone

- Stone texture and 4 chiseled edges

Available Sizes:

20" x 20" x 2"

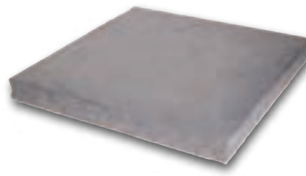


Hearth

- Stone texture and 4 chiseled edges

Available Sizes:

60" x 21" x 2"



Hearthstone (coming)

- Split stone texture and 4 chiseled edges

Available Sizes:

20" x 20" x 2-1/4"

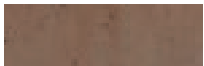
*colors may vary, see actual pallets

Corbels

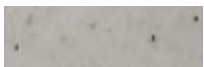
Available Colors:



Charcoal



Coffee



Smoke



Saddle Tan



Corbel

- Split Stone Edge

Available Sizes:

10-3/4" High x 2-1/4" Thick, Top 6-3/4", Bottom 2-5/8"

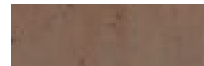
*colors may vary, see actual pallets

Mantels

Available Colors:



Charcoal



Coffee



Smoke



Saddle Tan



Mantel

- Split Stone Edge

Available Sizes:

9" x 60" x 2-1/4", 9" x 72" x 2-1/4"

*colors may vary, see actual pallets



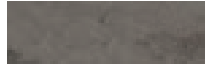
SILLS & MOLDINGS

Decorative precast moldings can be used to accentuate and further refine a design. Whether or not clients are looking for elaborate ornamentation or sleek styling, sills and moldings are a great way to add a beautiful element to any architectural project.

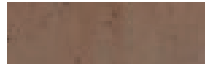


30" Sills

Available Colors:



Charcoal



Coffee

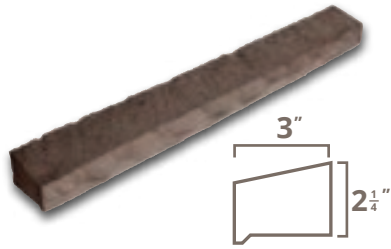


Smoke



Saddle Tan

*colors may vary, see actual pallets

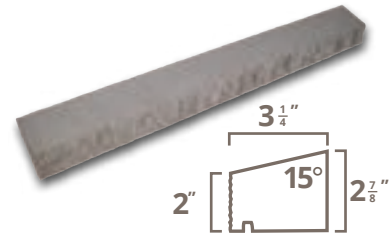


30" Sill - Stone Texture, Chiseled Edge

- With drip detail

Available Sizes:

2" high face to 2-1/4" back



30" Sill - Split Stone Edge

- With drip slot

Available Sizes:

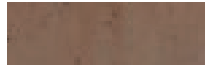
2" high face to 2-3/4" back

90° Corners

Available Colors:



Charcoal



Coffee

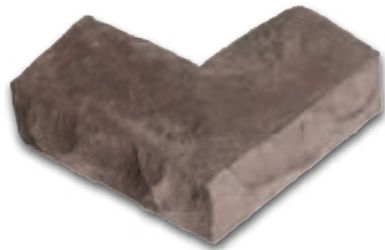


Smoke



Saddle Tan

*colors may vary, see actual pallets



90° Corner - Stone Texture, Chiseled Edge

- With drip detail

Available Sizes:

2" high face to 2-1/4" back, 7" x 7" x 2"



90° Corner - Split Stone Edge

- With drip slot

Available Sizes:

2" high face to 2-3/4" back, 10" x 10" x 2"

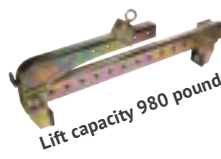
Helpful Installation Tools



Outcropping Lifting Device



Lift capacity 480 pounds



Lift capacity 980 pounds



Vacuum Lift (example)



Lifting Straps

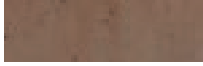
Moldings made to order

Made to Order

Available Colors:



Charcoal



Coffee



Smoke



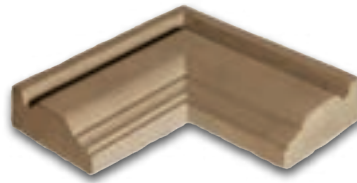
Saddle Tan

*colors may vary,
see actual pallets



Molding #1 - 36" Stretcher
Molding #1 - 6" high, 2-3/8" thick

Available Sizes:
18" and 36" long straight,
36" long end detail (L&R),
90° corner,
assorted arch diameters



Molding #1 - 90° Corner
Molding #1 - 6" high, 2-3/8" thick

Available Sizes:
18" and 36" long straight,
36" long end detail (L&R),
90° corner



Molding #2 - 36" Stretcher
Molding #2 - 8" high, 1-5/8" thick

Available Sizes:
18" and 36" long straight,
36" long end detail (L&R),
90° corner,
assorted arch diameters



Molding #3 - 36" End Detail
Molding #3 - 6" high, 2-3/4" thick

Available Sizes:
18" and 36" long straight,
36" long end detail (L&R),
90° corner



Molding #7 - 36" Stretcher
Molding #7 - 8" high, 2-3/4" thick

Available Sizes:
18" and 36" long straight,
36" long end return



Molding #9 - 36" Stretcher
Molding #9 - 6" high, 3" thick

Available Sizes:
18" and 36" long straight,
36" long end detail (L&R),
90° corner



Base Molding Type 1
8-inch base

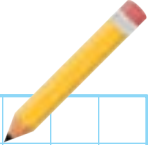
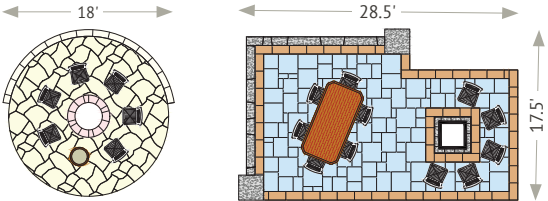
Available Sizes:
8" wide, 8" tall, 3-1/2" thick



Base Molding Type 2
6-inch base

Available Sizes:
6" wide, 8" tall, 3-1/2" thick

Sketch Your Project

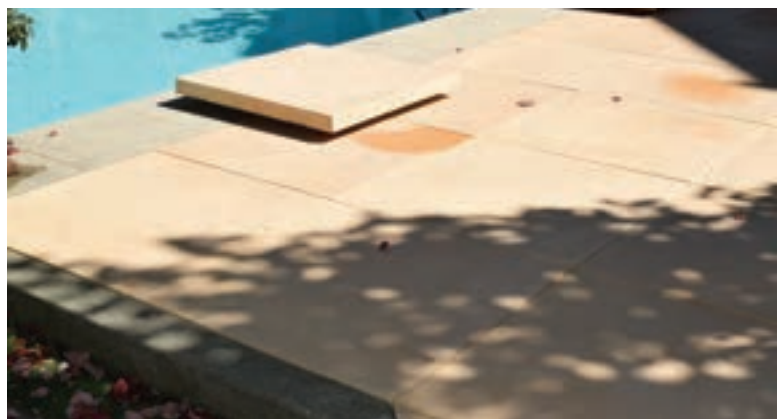


A large grid of blue lines on a white background, intended for sketching a project.

Castohn Custom

With our access to the finest aggregates in the Northwest, along with the highest quality precast materials and workmanship, we have developed hundreds of precast elements, some of which have been featured on LEED Platinum buildings. Our wet cast production process generates elegant textures and finishes to meet your project's needs.

Please feel free to contact us for consultation on your next architectural precast project.



Barriers and Wheelstops

Available Color:



Natural Gray



Type-X 9" x 6" x 72"

Product Details:
285 pounds



Type-X w/Slots 9" x 6" x 72"

Product Details:
265 pounds



Small 7-1/2" x 4-1/2" x 72"

Product Details:
150 pounds



Fancy Barrier 8' x 18", 18" High

Product Details:
1,700 pounds



Plain Barrier 12' x 18", 22" High

Product Details:
4,100 pounds



Ecology Block, Full

Product Details:
30" x 30" x 60"
4,000 pounds



Ecology Block, 1/2 Long

Product Details:
30" x 30" x 30"
2,000 pounds



Ecology Cap Block, 1/2 Long

Product Details:
30" x 30" x 30"
2,000 pounds



Ecology Cap Block, Full

Product Details:
30" x 30" x 60"
4,000 pounds



Ecology Cap Block, 1/2 High

Product Details:
30" x 15" x 60"
2,000 pounds



Ecology Cap Block, 1/2 High & 1/2 Long

Product Details:
30" x 15" x 30"
1,000 pounds



Sign Base w/Telespar

Product Details:
17" x 17" x 13" 2-1/2" Sleeve
250 pounds



BIO-ENHANCED

ECONcrete®'s environmentally sensitive technologies harness biological processes for the benefit of the environment on one hand, and the structure on the other. ECONcrete® products are tailored to encourage growth of flora and fauna, which enhance ecosystem services as well as provide valuable biological protection that increase the structure's strength and durability. ECONcrete® brings urban and coastal concrete infrastructure to life with a unique combination of propriety bio-enhancing concrete admixtures, complex surface textures, and innovative science based designs.

Bio-Active Walls & Tide Pools

ECONcrete by Castohn



BUILDING PRODUCTS

Bio-Active Walls

These unique design elements are easy to install 12" square panels. They are designed to induce rapid plant wall coverage if desired. There are two types of panels - field panels and pocket panels. The pocket panels hold one gallon of soil or lights, which can orient up or down. Bio-active walls significantly improve urban landscape, provide cleaner air, and reduce the ecological footprint of urban development.



Tide Pools

ECONcrete tidal pools use a concrete composite that mimics rock and coral. This unique formula enables the growth of algae, seaweed, and oysters, in order to generate a vibrant habitat for marine life.

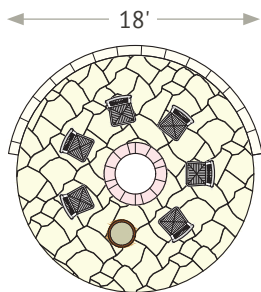


KITS

Whatever the look desired (Formal or Rustic), our kits are affordable and easy to install.

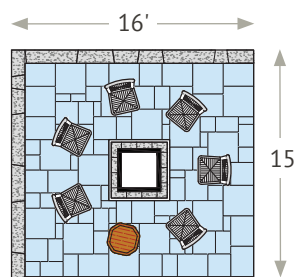
Pre-Planned Patio Kits

Rosetta by Castohn



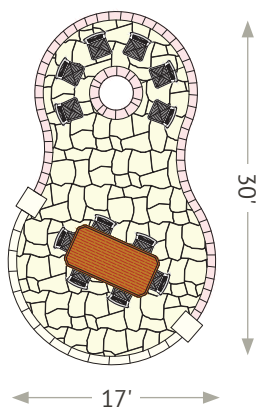
Rustic Kit A

- 200 square feet*
- Grand Flagstone slabs
- Belvedere Walls
- Dimensional Coping
- Round Fire Pit Kit
- Two optional Belvedere Columns and 27" caps can be added



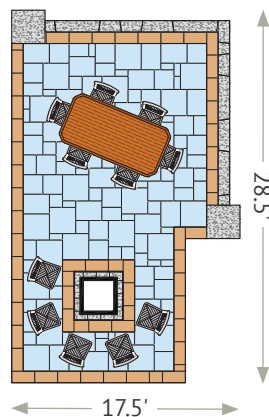
Formal Kit A

- 200 square feet*
- Dimensional Flagstone
- Kodah Wall
- Kodah Corners
- Dimensional Coping
- Square Fire Pit Kit



Rustic Kit B

- 425 square feet*
- Grand Flagstone slabs
- Old Mission Pavers
- Belvedere Wall
- Belvedere Columns
- Dimension Coping
- Round Fire Pit Kit
- 30" column caps



Formal Kit B

- 400 square feet*
- Dimensional Flagstone
- Linear Slate
- Kodah Wall
- Kodah Corners
- Kodah Column w/cap
- Dimensional Coping
- Square Fire Pit Kit

KIT PRODUCTS

Available Colors:



Silver Legacy



Western Buff



Pacific Mist

*colors may vary, see actual pallets

*Patio Kit quantities are exact footage, no spares included

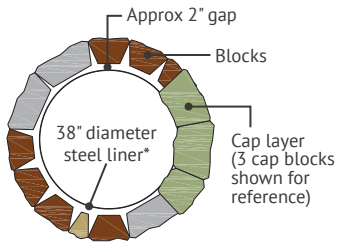
Fire Pit Kits

Rosetta by Castohn

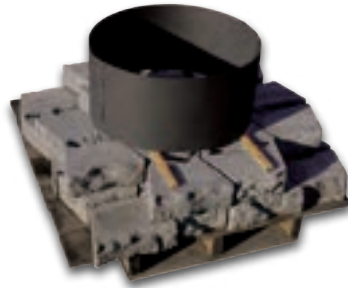
Round Belvedere Fire Pit (cap included)



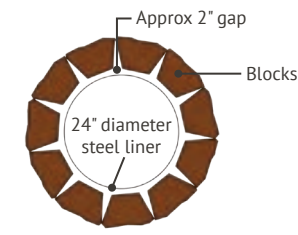
Top View



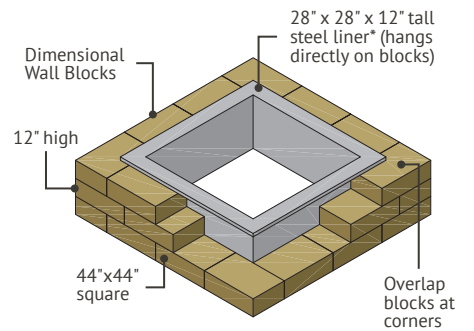
Small Round Dimensional Fire Pit (no cap)



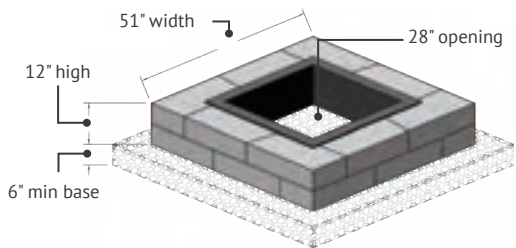
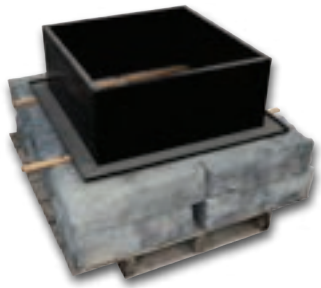
Top View



Square Dimensional Fire Pit (no cap)



Kodah Fire Pit (no cap)



Gas Conversion Kit



Gas conversion kits are available for both Round and Square Fire Pit Kits

Items included in kit



Available Colors:



Silver Legacy



Western Buff



Pacific Mist

*colors may vary, see actual pallets

Bench Kits

Rosetta by Castohn

- Conveniently packaged on 1 pallet
- Colors coordinate with other Castohn products
- Easy to install



KIT PRODUCTS

Available Colors:



Silver Legacy



Western Buff



Pacific Mist

*colors may vary, see actual pallets



Irregular Bench Kit

Available Sizes:
Irregular top - 7" tall



Dimensional Bench Kit

Available Sizes:
18" x 36" x 7" bench top
18" x 48" x 7" bench top



16" x 36" Bench Kit

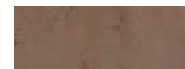
Available Sizes:
16" x 36" x 2-1/2" bench top (lightweight top, approximately 100 pounds)
16" x 36" bench top available colors:



Charcoal



Smoke



Coffee



Saddle Tan

*colors may vary, see actual pallets

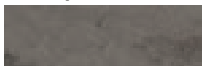
Bar Kit

Available Colors:

Bar Base Stones

Same as bench kit options above

Bar Cap



Charcoal

*colors may vary, see actual pallets

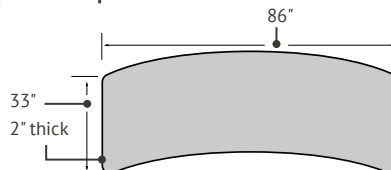
Front View



Back View



Top View



Bar Kit Product Details:

Overall bar height approximately 40"
Bar cap outer dimensions 86" x 40"
33" cap depth x 2" thick
Bar cap weight 285 pounds
Base stones are Belvedere Wall (p. 16)

A woman with brown hair tied back, wearing an orange jacket, and a young child in a red jacket are looking down at a large, textured stone wall. The wall is made of grey, rectangular blocks with a rough, natural stone appearance. The background is a blurred green landscape.

LIFETIME LIMITED WARRANTY

Castohn provides a lifetime limited warranty on the structural integrity of its manufactured product line used in residential applications. The warranty is extended to the original purchaser and is not transferable. Castohn products installed in accordance with our guidelines and industry standards that are deemed to be structurally defective will be replaced with product of equal value. Removal and replacement labor cost is not the responsibility of Castohn. Color matching and product availability are not guaranteed. Proof of purchase and/or installation contract must be made available prior to or at the time of inspection by an authorized Castohn representative. Other exclusions apply.

*For optimal color blending, mix and install product from several pallets simultaneously. Colors in catalog may vary from actual product, and some items and colors may require a short lead time to produce.



CASTOHN[®]
true to form

MANUFACTURER OF:

CASTOHN[®]
ARCHITECTURAL ACCESSORIES

ROSETTA[®]
WALLS • STEPS • ACCENTS

ECOcrete[®]
Concrete Ecological Solutions

6801 South Adams Street • Tacoma, WA 98409
Ph 253.830.3366 E Info@Castohn.com

Castohn.com