

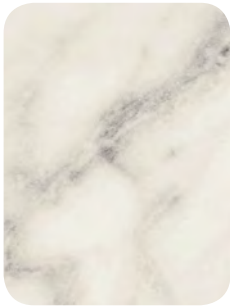
LAMINEX® DIAMONDGLOSS®

SURFACES

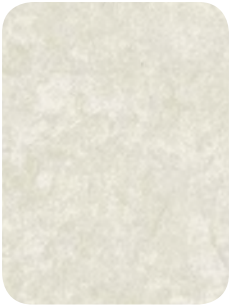


Laminex®

COLOUR RANGE PATTERNS AND WOODGRAINS



Carrara Bianco



Antarctic Stone



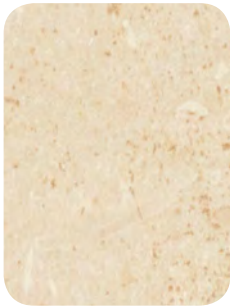
White Valencia



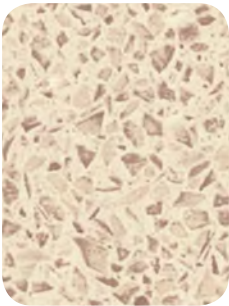
Catalana Marble#



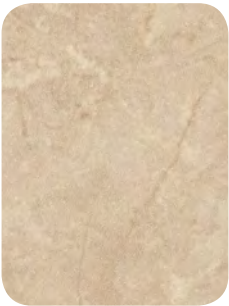
Atlantic Stone



Limestone



Toffee Mineralstone#



Lunar Stone



Persian Stone#



Kashmir Granite



Pure Mineralstone



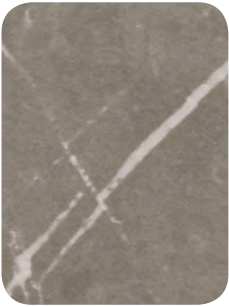
Tunisian Stone#



Jerusalem Stone#



Washboard



Grigio Grafite



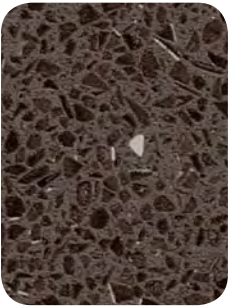
180fx Carrara Marble



Pavement#



Seductive Limba



Lava Mineralstone#



Smoke Granite

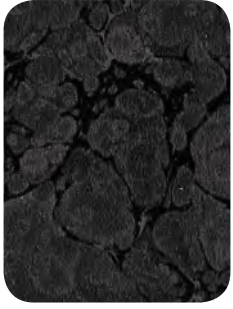
Please note: Colours, patterns and woodgrains may appear different in larger sizes. Standard sheet size is 3595 x 1395mm.
To view larger images or an indication of colour, pattern or woodgrain in larger sample pieces visit laminex.com.au.



Andalucian Marble[#]



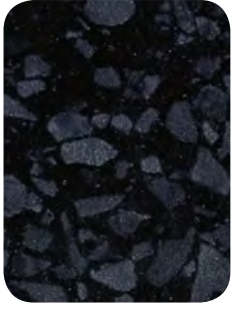
Jordan Stone



Evolution[#]



Brescia



Jet Terrazzo



Roman Marble



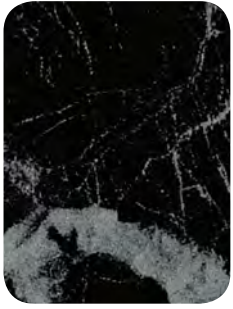
Alexandria Stone[#]



Vulcan Stone



Blue Pearl Granite



Black Marble



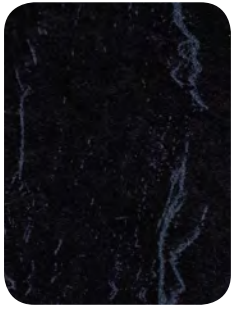
Endula Macassar[#]



Ebony Macassar



Burnished Wood



Ebony Marble



Starlight

[#]Exclusive to Laminex DiamondGloss surfaces range.

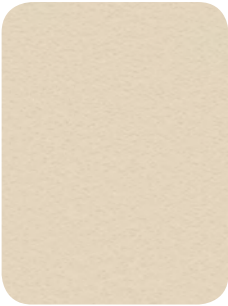
COLOUR RANGE SOLIDS



Polar White



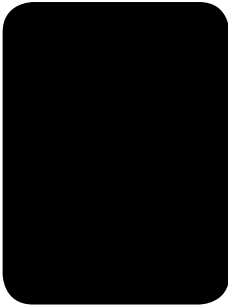
Parchment



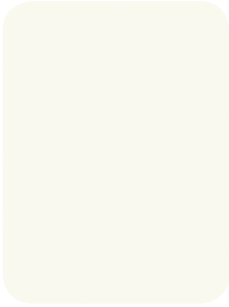
Pumice



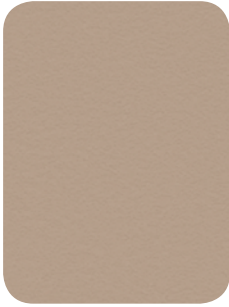
Stipple Hemp



Black†



White



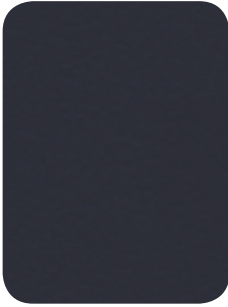
Peruvian Clay



Stipple Seal



Stipple Smoke



Charcoal†



Sassi



Jalapeno



Nocturne# †

†Black, Charcoal and Nocturne are not recommended for horizontal applications due to darker colours showing superficial scratches more readily.



Laminex DiamondGloss® surfaces offers a stunning high gloss finish, which is polished to perfection giving it a brilliance that is both striking and refined. Specifically developed for horizontal and vertical applications in both residential and commercial interiors, this range offers a selection of colours and patterns to suit a broad range of styles that can be seamlessly incorporated with other Laminex products. Laminex DiamondGloss has superior scuff resistance and lustre compared to a standard gloss laminate and is a stylish way to achieve an impeccable finish for benchtops, feature walls, panels and cabinetry.

HIGH GLOSS FINISH ■ STONE AND WOODGRAIN PATTERNS ■ RANGE OF MATCHING EDGING



FRONT AND BACK COVER: Mineral Style kitchen cabinetry is **Laminex DiamondGloss** in **Black** paired with island benchtop, base front panel and rear benchtop in **essastone Chalkstone** Gloss finish. Splashback features **essastone** in **Fino Venato** Gloss finish.

ABOVE: Coastal Style kitchen island and rear benchtop is **Laminex DiamondGloss surfaces** in **Pure Mineralstone** paired with base and overhead cabinetry in **Laminex FormWrap Doors and Panels White** Textured finish with a **Settler** profile. Splashback is **Laminex Metaline Splashbacks and Panels** in **Palladium Perle**. Shelving and bookcase is **Laminex Colour Palette** in **White**.

*Please obtain a copy of the Laminex Limited Product Warranty from laminex.com.au.







Laminex®

For a sample visit laminex.com.au. For more information visit laminex.com.au or call 132 136.

Laminex DiamondGloss surfaces are marketed and distributed by Laminex Group Pty Limited ABN 98 004 093 092, trading as Laminex. In some cases, Laminex uses computer generated imagery (CGI) to provide graphical representations of our products where actual photos are not available. The colours and finishes of the products featured within all Laminex imagery are as close to the Laminex range as CGI, photographic lighting and our printing processes allow. Different camera angles, although not designed to be misleading, can sometimes distort actual size and distances. Laminex DiamondGloss surfaces are no different than any other material in that darker colours will always show scratches and superficial wear and tear more readily than lighter colours. The inherent nature of the high gloss laminate surface and the high optical reflectiveness means that slight rippling may be evident, especially in areas of strong direct and/or concentrated light. Laminex DiamondGloss surfaces should be protected from strong, direct sunlight as continuous exposure may cause discolouration or fading to the surface. Please obtain a copy of the terms and conditions of the Laminex Limited Product Warranty from laminex.com.au. This warranty is in addition to any rights that may exist under the Australian Consumer Law. Laminex®, DiamondGloss®, Colour Palette, essastone®, FormWrap, Metaline®.

Follow Us

-  facebook.com/Laminexau
-  au.pinterest.com/Laminexau
-  instagram.com/Laminexau
-  youtube.com/Laminexau