

Fabrication, Procurement, Inspection, Engineering & Quality Management

MINING & METALS | RAIL & CRAWLER MOUNTED MOBILE MACHINES

Introduction

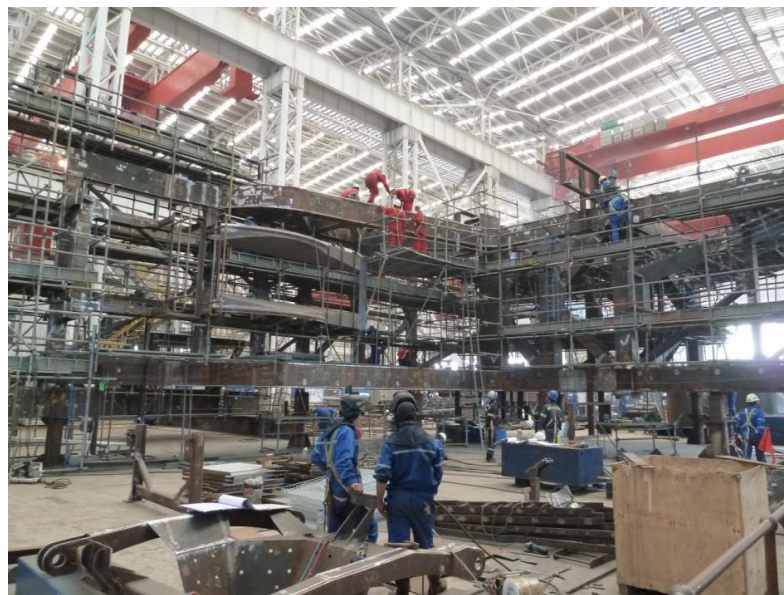
Andvare's key personnel have substantial experience in fabrication, procurement, inspection, engineering inspection for design intent and quality assurance, quality control and quality surveillance of mobile machines and fixed structures for the bulk materials handling industry, in addition to cranes and other port infrastructure. This includes mine and export facility (port) stackers, reclaimers and shiploaders, ship unloaders, ship to shore cranes and overhead travelling cranes.

Andvare's team of experienced Machine Engineers have provided inspection services in accordance with Australian and International Standards to many diverse clients across several continents.

Andvare have a unique capability and offering in this area with our own in house fabrication and heat treatment capabilities, in addition to guaranteed fabrication capacity at several high capacity and specialist fabrication facilities in Eastern Europe.

Key Capabilities

- Fabrication, inspection, reporting, schedule control and expediting
- Transport logistics of fabricated structures, including lift and transport studies
- Engineering inspections of fabricated components to ensure design intent is retained
- Quality Assurance, Quality Control and Quality Surveillance in local and expatriate roles
- Manufacturers Data Report (MDR) audit, review and approvals
- Inspection and Test Plan (ITP's) provision, review and approvals
- Fabrication sequence design and review, weld maps, material traceability and control



For further information, contact:

Justin Willis, Principal
justin.willis@andvaregroup.com

Chris Snow, Principal
chris.snow@andvaregroup.com