



**REICHLE**  
TECHNOLOGIEZENTRUM

THE ART OF PERFECTION

Texturkollektion 4 Elemente

**FEUER**





## FEUER

Feuer. Angst. Hitze. Impulsion. Attribute eines Elements, das keinem anderen in seiner wahrhaftigen Zerstörungskraft subjektiv näher steht. Es ist schwer zu bändigen, mutig und zugleich kreativ schöpferisch.

Es ist spontan, verschlingt andere Elemente und braucht sie zugleich: Luft und Erde. Die rote Symbiose eines Elements, das ohne die beiden anderen nicht existieren könnte.

Feuer ist kräftig, mystisch und begeisternd. Willensstärke, Aggressivität und Durchsetzungsvermögen wird damit assoziiert. Eine wahrhaftig geisterhaft anmutende Schönheit, wenn Flammen lodern, zu Höherem streben und ausdrucksstark sind.

Fire. Fear. Heat. Impulsion. Attributes of an element that are in terms of destructiveness subjectively not closer to any other element. It is hard to restrain, brave and at the same time creative.

It is spontaneous, devours other elements but needs them at the same time: Air and earth. The red symbiosis of an element, that wouldn't exist without the other two.

Fire is powerful, mystical and inspirational. Willpower, aggressivity and perseverance are associated with it. A veritable spectral seeming beauty, when flames blaze, seeking to rise to new heights.



DETAIL  
VIEW



MODIFY ANY TYPE OF PRODUCT



STRONG  
TEXTURE CHARACTER



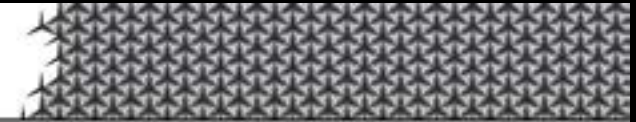
MODIFY  
PRODUCT SURFACE



INTERPRETATION OF SPARK TEXTURE



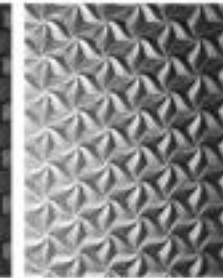




DIAMOND



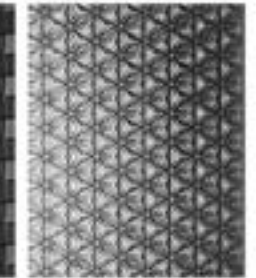
FLAME



SPARKS



GLOW



RADIUM



SHINE



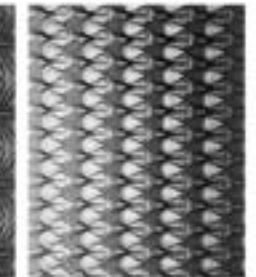
GLUDER



CHARCOAL



POMPA



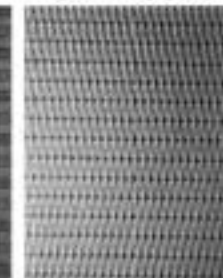
FLINT



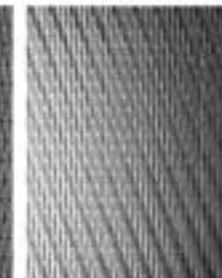
PATERA



GRID



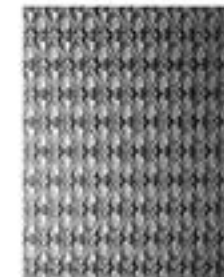
GRATING



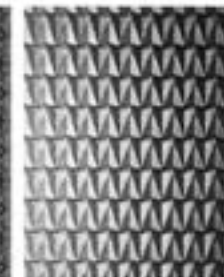
ZEUS



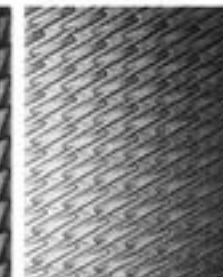
SHARP



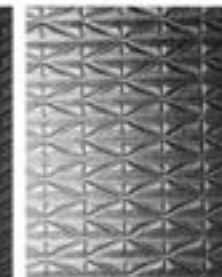
LAVA



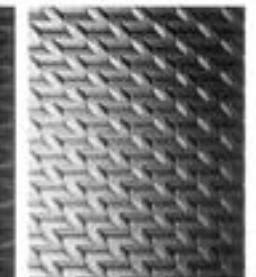
STREAM



CAMSHAFT



LIGHTNING



GRILLIO

Diamond 80 µm | Flame 175 µm | Sparks 150 µm | Glow 150 µm | Radium 140 µm |  
Shine 125 µm | Gluder 75 µm | Charcoal 200 µm | Pompa 200 µm | Flint 200 µm |  
Patera 85 µm | Grid 85 µm | Grating 100 µm | Zeus 110 µm | Sharp 125 µm |  
Lava 150 µm | Stream 110 µm | Camshaft 125 µm | Lightning 125 µm | Grillio 125 µm |



THE ART OF PERFECTION