

The PulseDrop

Quick Install Guide



WARNING



Before Installing PulseDrops

Compliance is required with respect to voltage, frequency, and current requirements indicated in this document. Connection to a different power source other than those specified may result in improper operation, damage to the equipment or pose a fire hazard if the limitations are not followed. If you don't feel comfortable with these installation steps, it is recommended that you consult with a professional technician. Vutility is not responsible for accidental injury related to unqualified installation. This equipment is provided with a detachable antenna. Do not substitute the antenna with one that was not provided by Vutility.

The PulseDrop Install Guide

This guide will walk you through the steps to get your PulseDrop installed and transmitting data. For additional questions contact support at support@vutility.com.

To begin, download InVU through the app store or google playstore. Download on IOS or Andriod device with up to date software. Once downloaded move to steps 1-7.

iOS



For iPhone, scan the QR Code or type InVU Vutility in App Store.

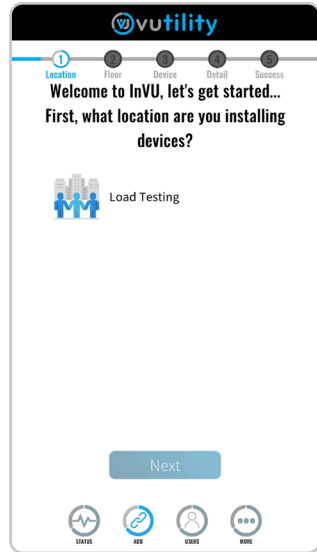
Android



For Android, scan the QR code or type InVU in Google Play Store.

1. Select Locations in InVU

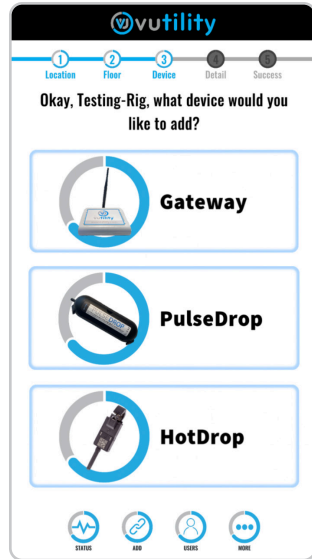
Select the locations that are being monitored in the InVU app. Tap the "Location" and tap "Next". Select where you are installing (ex: Campus, Building, Floor, Zone, Circuit). Then click "Next".



2. Add and Set Up Devices

After selecting your organization's location, set up a gateway and device.

If using a 3rd party LoRa gateway or network, contact support@vutility.com to set network configurations and skip to step 4.



3. Set Up and Install Gateway

First set up your gateway. The gateway should remain within one hundred feet in distance to PulseDrop. Ensure gateway is powered up and connected.

***Verify Port-1700 is open to connect with the gateway if gateway is Ethernet only.**

In InVU tap "Gateway" to add. Use camera to scan QR code on back of the gateway. Click "Save" when finished.

vutility

1 Location 2 Floor 3 Device 4 Detail Success

Let's add a gateway.

QR Code Scanner

Name

Device ID


Application Server

Save

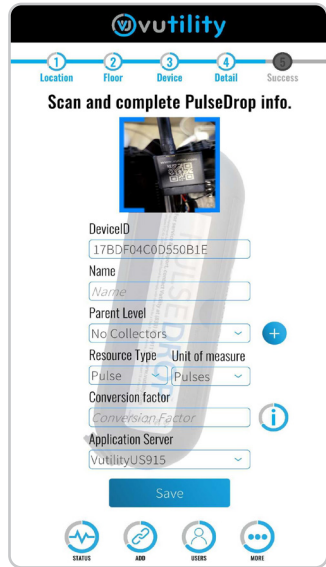
STATUS ADD USERS MORE

4. Set Up PulseDrop

Select “PulseDrop” and scan the QR code on the inside of the device. The device ID will generate, and you can then name your device.

Tap “Parent Level” and select or create your collector based on the location you’re installing. To add new select the  button. Next fill out the remaining information and hit “Save”.

***All information needs to be filled out in order for the application to let you continue adding the device.**




The screenshot shows the vutility app interface for setting up a PulseDrop device. At the top, there's a progress bar with five steps: 1 Location, 2 Floor, 3 Device, 4 Detail, and 5 Success. The current step is 3, "Device". Below the progress bar, the text "Scan and complete PulseDrop info." is displayed. A QR code is shown in a blue frame. Below the QR code, there are several input fields: "DeviceID" (17BDF04C0D550B1E), "Name" (Name), "Parent Level" (No Collectors), "Resource Type" (Pulse), "Unit of measure" (Pulses), "Conversion factor" (Conversion Factor), and "Application Server" (vutilityUS915). There are also icons for adding new items (+) and getting help (i). At the bottom, there's a "Save" button and four navigation icons: STATUS, ADD, USERS, and MORE.

vutility

1 Location 2 Floor 3 Device 4 Detail 5 Success

Scan and complete PulseDrop info.



DeviceID
17BDF04C0D550B1E

Name
Name

Parent Level
No Collectors

Resource Type
Pulse

Unit of measure
Pulses

Conversion factor
Conversion Factor

Application Server
vutilityUS915

Save

STATUS ADD USERS MORE

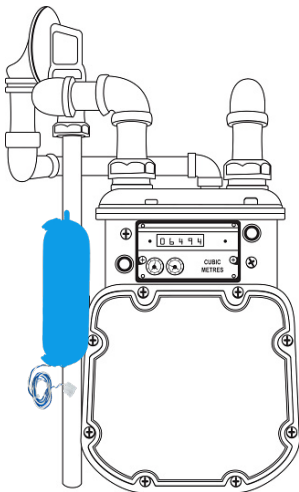
5. Confirm Devices Added Successfully

When devices are successfully added this screen will appear. Now you can add another device, change level, or complete set up.

When finished adding devices it's time to install.



6. Install PulseDrop



1) Activate the batteries on the inside of the device by turning the switch to "ON".

2) Securely mount PulseDrop to meter or surrounding area.

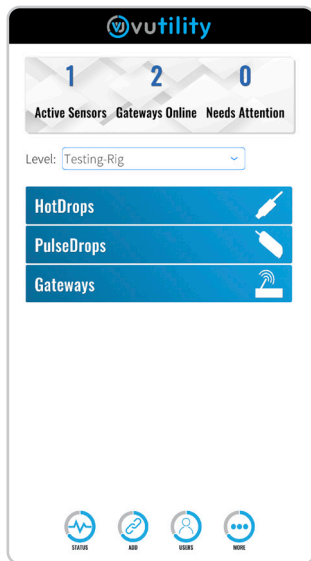
3) Connect the two output wires to the pulse connector. It doesn't matter which wire connects to which side.

7. Check PulseDrop Status

Verify the PulseDrop is connected to the gateway and transmitting data by LED flashes.

5 flashes is PulseDrop looking to join LoRaWAN network. 6 flashes means PulseDrop joined gateway and is transmitting data.

In InVU, devices that are connected will display **BLUE** if active, **RED** if it is having issues, and **GREY** if it's not connected.



Support Resources

For additional details and
questions contact
support@vutility.com.

Phone:
(833) 895-9111



@2021 Vutility, Inc. All rights reserved. Vutility, Vutiliti, VU logo, and HotDrop are all trademarks or registered trademarks of Vutility, Inc. in the United States and in other countries. Vutility also reserves the right to change all information within this packet at any time.