

# Empower advanced Microsoft 365 management with CoreView Professional

Automate for efficiency in Microsoft 365 governance with advanced customization and unmatched best practices configuration

CoreView Professional is tailored for businesses facing potential issues with policy violations, breaches, or wanting to overcome inefficiencies in manual governance.

This package offers a more sophisticated set of tools for Microsoft 365 management and automation, including extended support and enhanced Playbooks.

It's designed for businesses that have experienced governance challenges or are spending too much on inefficient manual processes, and need a more robust solution to streamline operations.

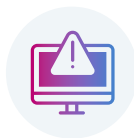
## Benefits

- Define and configure even the most advanced policies within a few clicks in one centralized platform
- Optimize IT and business operations with a powerful true-no-code automation engine; save time, reduce errors, and fulfill admin tasks
- Reduce time and costs associated with manual governance, making it simple for all stakeholders
- Easily build the reports, policies, and automations that your business needs

## How it works



Scans your M365 environment



Identifies policy violations



Remediates via automated workflows

Discover how CoreView Professional can transform your M365 management. Contact us for a demo today!

CoreView is a Microsoft AI Cloud Partner, available in the Azure Marketplace, and works exclusively with Microsoft resellers, solution integrators, and managed service providers, ensuring organizations get the most out of Microsoft 365.

We revolutionize the way Microsoft 365 stacks are managed, providing a unified approach to configuration management, delegated administration, and automated governance.

## Highlights

- Comprehensive set of pre-defined Playbooks which can be extended by your own custom ones
- Advanced workflow and automation features
- Robust reporting with over 100 out-of-the-box reports for users, devices, groups, workloads, licensing and more

## Available add-ons

- Teams Phone Connector
- Audit Connector
- Hybrid Connector
- Success Package - Bronze, Silver, Gold or Platinum
- Additional services (advisory hours)

For more information about CoreView,

visit [coreview.com](https://coreview.com).

To learn more about pricing/ procurement and Success Packages reach out to [sales@coreview.com](mailto:sales@coreview.com).

# Introducing CoreView's new **tiered packages**

Essentials, Professional, Enterprise and Suite - represent a strategic shift towards a more tailored and scalable approach to Microsoft 365 management. This progression model aligns with different maturity stages, allowing you to select a package that perfectly fits your current requirements, with the flexibility to upgrade as you grow!

Package	CoreView Essentials	CoreView Professional	CoreView Enterprise	CoreView Suite
Features	<ul style="list-style-type: none"> <li>• Governance Center</li> <li>• Out-of-the-box Playbooks</li> </ul>	<ul style="list-style-type: none"> <li>• Governance Center</li> <li>• Out-of-the-box Playbooks</li> <li>• Custom Playbooks</li> <li>• Reporting</li> <li>• Workflow</li> <li>• Permissions</li> <li>• Management Actions</li> </ul>	<ul style="list-style-type: none"> <li>• Governance Center</li> <li>• Out-of-the-box Playbooks</li> <li>• Custom Playbooks</li> <li>• Reporting</li> <li>• Workflow</li> <li>• Permissions</li> <li>• Management Actions</li> <li>• License Pools</li> <li>• Virtual Tenants</li> <li>• Integration technologies (ServiceNow, Workflow API)</li> </ul>	<ul style="list-style-type: none"> <li>• Governance Center</li> <li>• Out-of-the-box Playbooks</li> <li>• Custom Playbooks</li> <li>• Reporting</li> <li>• Workflow</li> <li>• Permissions</li> <li>• Management Actions</li> <li>• License Pools</li> <li>• Virtual Tenants</li> <li>• Integration technologies (ServiceNow, Workflow API)</li> <li>• Multi-tenant reporting and tools</li> <li>• Data Connector</li> <li>• Hybrid Connector</li> <li>• Teams Phone Connector</li> <li>• Audit Connector</li> </ul>
	<i>Pre-defined Playbooks with automated remediation actions for SharePoint, Exchange, Teams, Identity and Security, Licensing</i>			
Success packages available	Bronze, Silver	Bronze, Silver, Gold, Platinum	Silver, Gold, Platinum	Silver, Gold, Platinum
Add-ons	n/a	Connector add-ons may be purchased: <ul style="list-style-type: none"> <li>• Hybrid</li> <li>• Teams Phone</li> <li>• Audit</li> </ul> Additional services: <ul style="list-style-type: none"> <li>• Advisory hours</li> </ul>	Connector add-ons may be purchased: <ul style="list-style-type: none"> <li>• Hybrid</li> <li>• Teams Phone</li> <li>• Audit</li> </ul> Additional services: <ul style="list-style-type: none"> <li>• Advisory hours</li> </ul>	<b>ALL connectors are INCLUDED!</b>  Additional services: <ul style="list-style-type: none"> <li>• Advisory hours</li> </ul>

Selected features explained:

**Governance Center:** A comprehensive “snapshot” of your organization’s Microsoft 365 environment posture

**Playbooks:** Automated sets of actions within CoreView to streamline and enforce governance policies across Microsoft 365

**Permissions:** CoreView’s functionality for managing and customizing user permissions, provides granular control over access rights; RBAC

**License Pools:** Manage allocated licenses within your organization and assign them to specific agencies or business units, ensuring efficient use of resources and reducing unnecessary expenses

**Virtual Tenants:** Segmentation of Microsoft 365 tenants into smaller, manageable units for tailored administration and policy enforcement

**Hybrid Connector:** Unified management interface for both cloud and on-premises Microsoft environments

## Benefits of our packages

**Adaptable to your growth:**  
Each package is designed to cater to specific operational complexities and governance needs. As your organization advances, our solutions advance with you.

**Optimized investment:**  
By segmenting our offerings, we ensure you only pay for what you need, making it a cost-effective solution, and providing the best value at every stage of your journey.

**Seamless upgrade path:**  
Transitioning between packages is streamlined and hassle-free. Our dedicated support team ensures a smooth upgrade process.

**CoreView, a partner in your Microsoft 365 journey:**  
Our commitment is to be your partner at every step, providing solutions that evolve with you. Choose the package that meets your needs today, and trust us to support your growth tomorrow!

More information about Bronze, Silver, Gold, Platinum Success Packages and additional support services are available upon request.

Contact us at:  
[sales@coreview.com](mailto:sales@coreview.com) today!