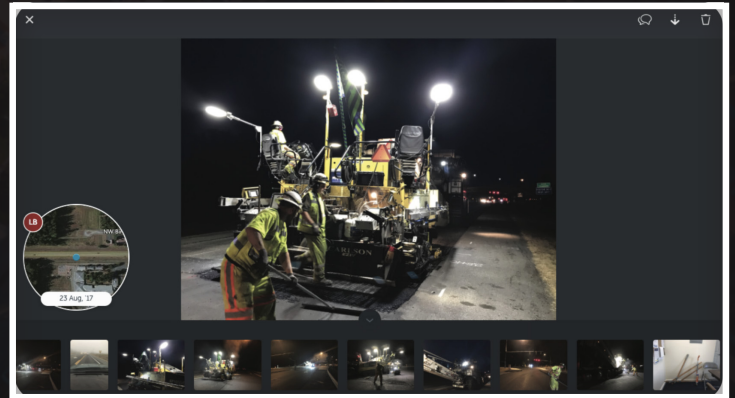


Granite Construction

Highway Paving

To pave a 25 mile stretch of highway on an island in Washington state, Granite Construction had to coordinate a night time build with a daytime project manager



Results



Drone imagery enabled a **STREAMLINED RESTRIPIING PROCESS** by providing HD images of the roadway



Drone flights provided **SAME DAY TURNAROUND** on quantity tracking - a three to four day decrease



Reduced onsite meetings from **BI-WEEKLY TO AS NEEDED** by streamlining communication



Cut the average time the PM spent identifying and resolving issues from **2 DAYS TO 2 HOURS**

The Problem

Granite Construction won a contract to repave the main stretch of road on a small island, with the stipulation that all construction would occur at night. However, the project manager (PM) needed to keep daytime hours to successfully manage his other builds. The mismatched work schedules led to constant missed communications, with the PM often not finding out about issues until the end of his workday when the crew arrived on site.

As a result of this communication delay, issues that should've only taken hours to resolve, instead dragged on for days. Unsurprisingly, construction quickly fell behind schedule. The PM needed to find a reliable way to document progress and communicate between the night and day shifts - and he needed to do it quickly.



The Solution

With the introduction of Uneath's software, Granite Construction was able to standardize their cross-shift communication, improving productivity and increasing the PM's ability to view project progress. Rather than communicating issues with manual data entry at the end of the day, Granite now had a single system of record in which field inputs were sent directly to supervisors for quick action and approval.

Field teams no longer had to create a paper report at the end of the night shift, trying to remember the details of all issues that occurred. Instead, they were able to effortlessly document and note all progress and/or issues in full detail, in real time - giving the PM an automatic summary of job site progress and problems every morning. Problems that, previously, took days to address were now resolved in a matter of hours. The project quickly got back on schedule, avoiding significant overage penalties.

