

# PRESSURE CONTROL RENTAL

**The Flowline Rental Division is the founding service of our company, renowned for its prompt and efficient delivery of reliable and certified equipment.**

We offer cost effective rates due to our low margins without the burden of corporate overheads. Our service provides clients more time to focus on their specialist area.

In addition we manage and maintain client owned equipment within our one stop shop where we shot blast, redress and recertify your equipment by our experienced staff.



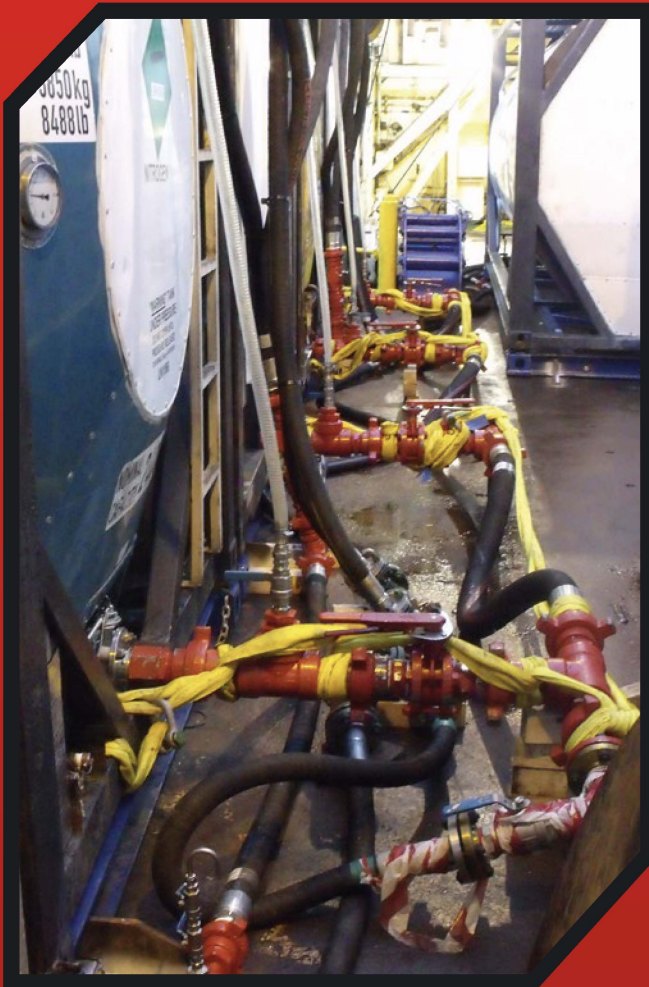
**FLOWLINE EQUIPMENT MOBILISATION**

## **Our Equipment**

Meets API and 6A/SI913 and NACE 1075 and is primarily fitted with WECO 1502 connections. Sizes can range from 1" to 13 5/8". Equipment type ranges from anaconda hoses, chiksan, flanges, swivels and crossovers. In addition we supply valves and P.R.V. valves, and chokes which are complemented with analysers and flowmeters. Our equipment is widely used for well testing, integrity testing, sand control, completions, cementing and fracing. Our metering systems are tested and verified in house at our calibration flow loop.

# PRESSURE CONTROL RENTAL

## PRESSURE CONTROL EQUIPMENT



FLOWLINE RIG UP

- FIG 1502, 206, 602, 2202 and others
- Straights, swivels, pups, tees and elbows
- Cross and y pieces
- Plug, gate, ball, check and relief valves
- Delivery hoses, HP transfer hoses
- Black Eagle, Coflexip and Synflex hoses
- Data headers, spool pieces
- Flanged, drilling, hub and wireline xovers
- Unusual/uncommon xovers
- Chokes, choke manifolds, loops
- Spamm manifolds (subsea)
- Flanged riser
- Restraining systems
- Hose reels
- Purpose built flowline containers
- Baskets
- Flowline meters