



Category of Passengers Allowed Entry

1. Malaysia nationals
2. Foreigners holding valid Malaysian long-term visit passes can enter the country without immigration clearance via MyTravelPass/MyEntry. These categories of passengers include:
 - Diplomat (Exemption Order)/Dependent/Foreign Maid
 - Employment Pass (Category I, II, III) / Dependent/Foreign Maid
 - Resident Pass-Talent (RP-T)/ Dependent/Foreign Maid
 - Professional Visit Pass-Specialist
 - Professional Visit Pass.
 - Permanent Resident (PR)/Spouse to PR/Child to PR.
 - Long-Term Pass (Husband/Wife/Child) to Citizens.
 - Senior Citizen Pass.
 - Widow/Widow Pass to Citizen.
 - Student Pass/Dependent/Escort.
 - Malaysia Pass My Second Home/Dependents/Foreign Maid.
 - Resident Pass.
 - Temporary Work Visit Pass.
 - Foreign Maid.
 - Oil & Gas workers and Seafarers- Crew Ship entry for '*sign-on*' / '*joint ship*' must provide Letter of Guarantee.
3. Other foreigners that are not listed in the above-mentioned categories are required to apply via MyTravelPass/MyEntry before entering Malaysia. Passengers are advised to refer to the Official Portal of Immigration Department of Malaysia for detailed information.

Category of Passengers Not Allowed Entry to Malaysia

Effective 2 December 2021, passengers with a travel history within 14 days at the high-risk countries will be temporarily banned from entering Malaysia.

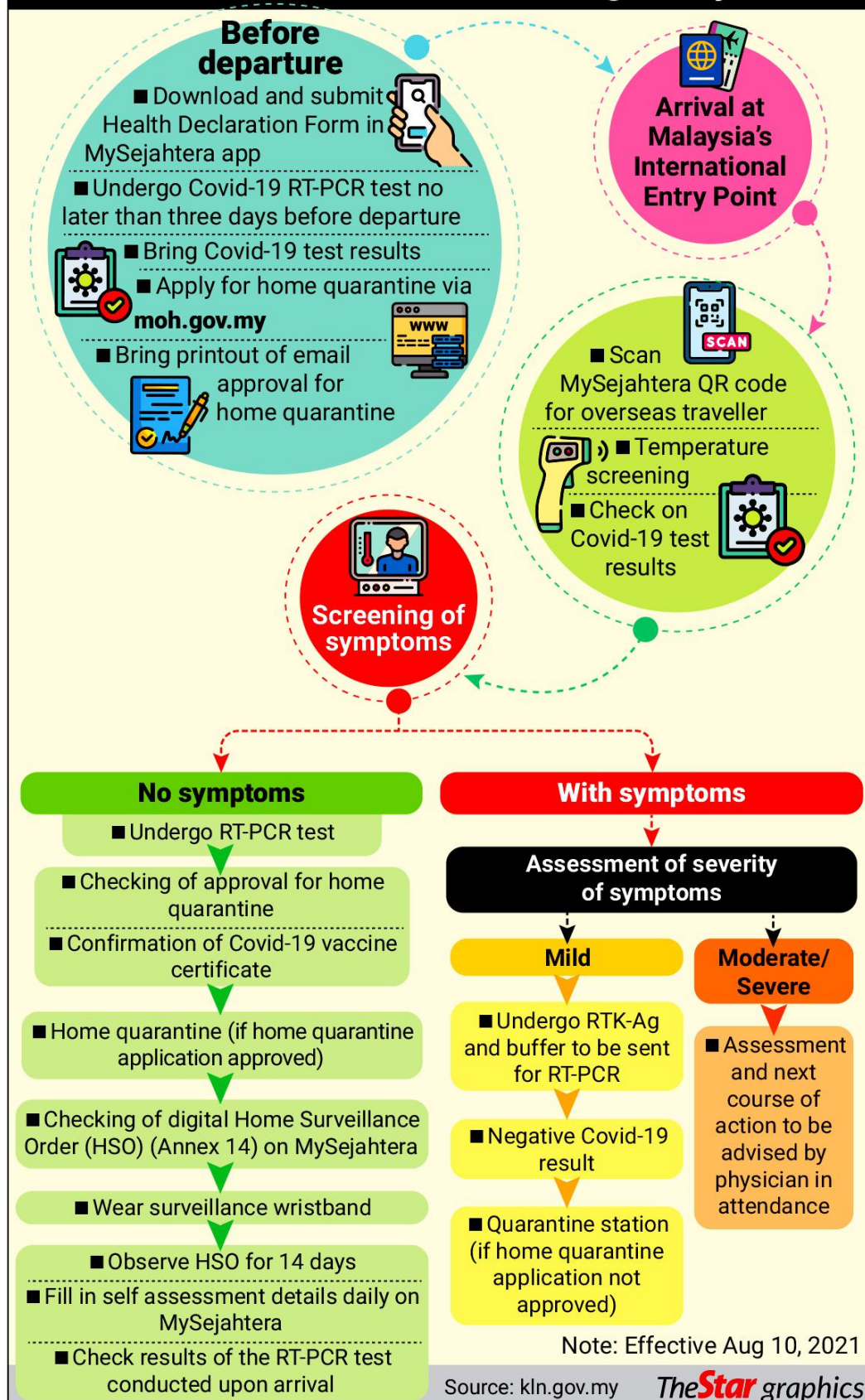
1. All foreign nationals from or with a travel history within 14 days to high-risk countries namely **South Africa, Botswana, Eswatini, Lesotho, Mozambique, Namibia, Zimbabwe, and Malawi**. However, exemptions are given to travellers holding Short Term and Long-Term Pass from the above-mentioned countries, and subject to the following requirements:
 - i. Provide negative COVID-19 PCR test taken within two (2) days before departure
 - ii. Undergo RT PCR test upon arrival
 - iii. Undergo a 14-day quarantine at the designated quarantine station and RT PCR test on 10th day of quarantine
 - iv. Wear the digital tracker throughout 14-day quarantine period
 - v. The release from quarantine is subject to the risk assessment conducted on the 14th day of quarantine and a negative COVID-19 PCR test result on the 10th day
2. Malaysian Permanent Residents (PR) and active/valid Malaysian Long Term Pass holders (Spouse Visa, MM2H, Resident Pass) will be allowed entry and subject to the following requirements:
 - i. Mandatory quarantine for 14 days at the quarantine station regardless of the vaccination status and are not allowed to undergo quarantine at home.
 - ii. Undergo COVID-19 RT-PCR test 72 hours prior to arrival (international arrival) and on the 10th day during the mandatory quarantine period
3. Foreign nationals who are transiting in Malaysia to a third-world country and who have been granted entry clearance through MyTravelPass / MyEntry and other related programs are NOT allowed to enter Malaysia.



Travel Requirements and Procedures

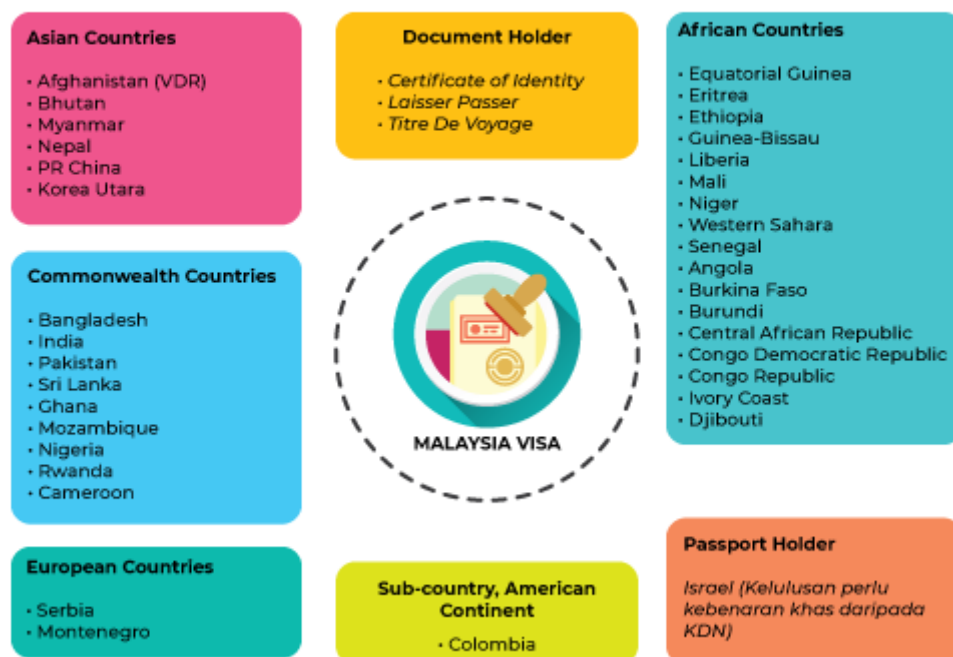
1. Undergo COVID-19 screening test upon arrival (which may take between 1 to 2 hours).
2. Passengers arriving from overseas must provide a negative RT-PCR test result taken within three (3) days before departing to Malaysia, failing which, their entry will be denied. The certificate must be presented in digital or hardcopy, preferably in English or Bahasa Malaysia.
3. Passengers arriving from countries reported with high COVID-19 Omicron variant cases namely the United Kingdom, United States of America, Australia, France and Norway must take COVID-19 PCR test within two (2) days before departure. They must also wear a digital tracker provided by medical officers upon arrival.
4. All fully vaccinated passengers arriving from international sectors must observe a 7-day quarantine. Meanwhile, unvaccinated or partially vaccinated passengers must observe a 10-day quarantine
5. All passengers must go through a Health Assessment by the medical officer on duty upon arrival.
 - Residence Pass-Talent (RP-T) and their dependent/s
 - Passengers who are asymptomatic are required to undergo RT-PCR test for the COVID-19 upon arrival.
 - Passengers with mild symptoms are required to undergo a COVID-19, RTK-AG, or RT-PCR COVID-19 test upon arrival.
 - Passengers with moderate/severe symptoms will be referred to a medical expert on duty for further action. Further action is based on health assessments by medical experts.
 - Passengers will bear any applicable charges.

Flowchart for travellers entering Malaysia



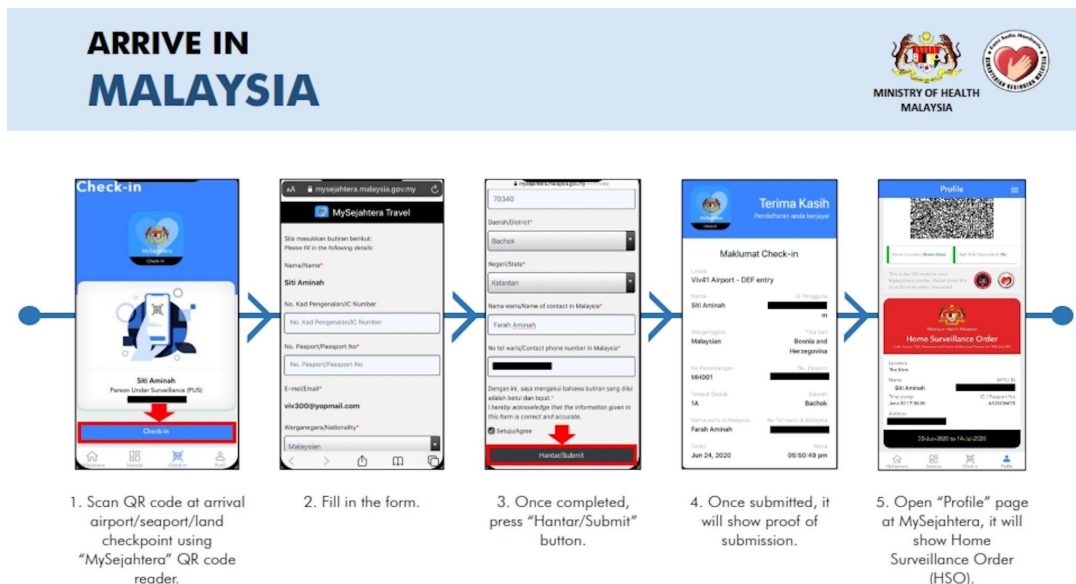
6. The cost for quarantine that includes COVID-19 screening test, transport, accommodation, meal, and handling cost as determined by the Malaysian Ministry of Health are to be borne by passengers. Payment of any applicable charges are to be made through the MySafeTravel System accessible on <https://safetravel.myeg.com.my/> or the MyQR phone app prior to their arrival into Malaysia to avoid congestion at the airport.

VISA REQUIREMENTS BY COUNTRIES



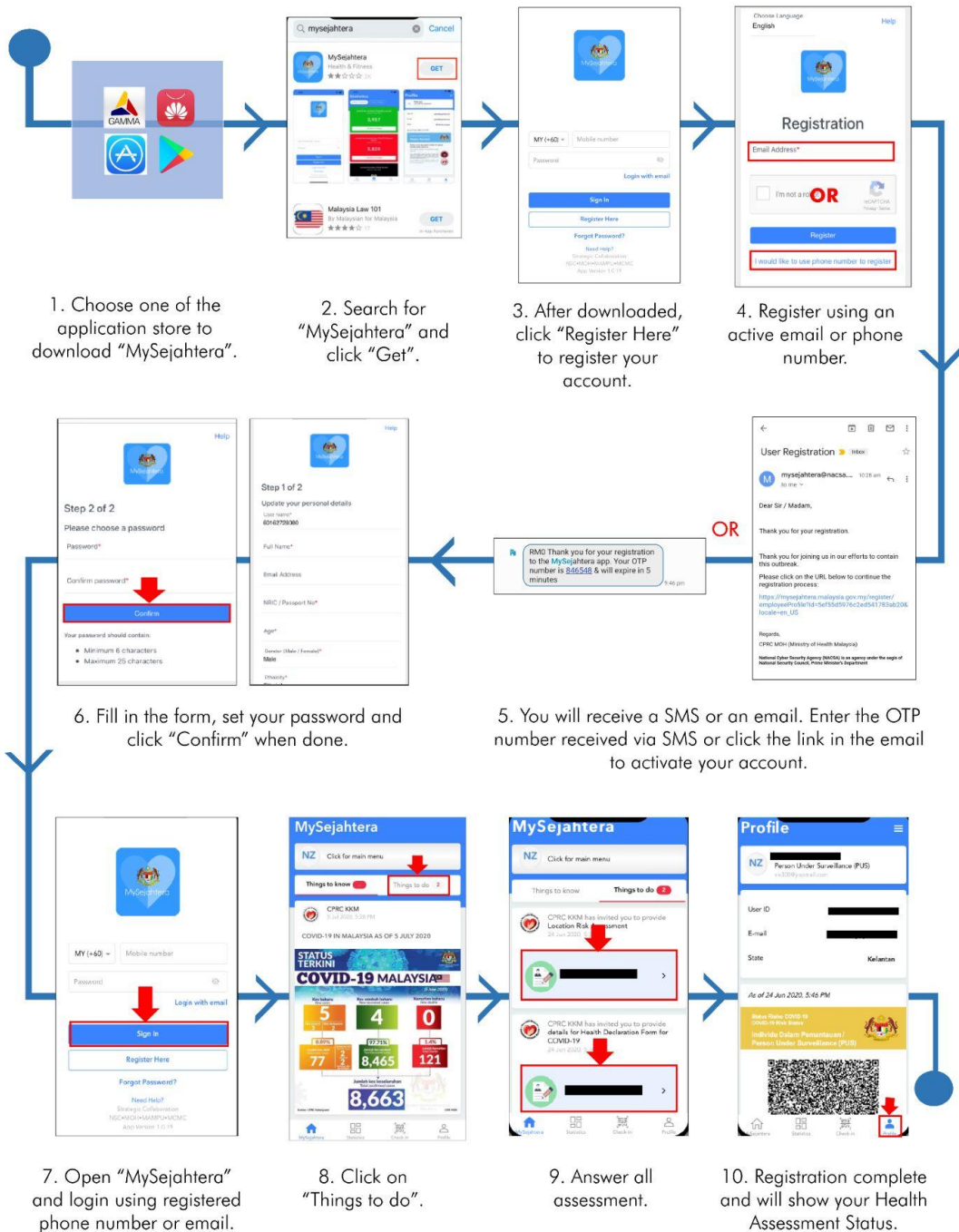
7. Fully vaccinated* Passengers including Malaysians and foreigners who have a residence in Malaysia, including permanent residents and MM2H visa holders returning from overseas, may observe their quarantine at home, subject to strict requirements.

- The Ministry of Health Malaysia's definition of fully vaccinated is:
 - i. 14 days after the second dose of two-dose vaccines from Pfizer, AstraZeneca, Moderna Sinopharm and Sinovac; OR
 - ii. 28 days after a single dose from Johnson & Johnson, CanSinoBio and Sputnik.
- 8. Eligible passengers for a home quarantine are required to apply for approval seven (7) days before departure through the Ministry of Health Malaysia official website at <https://hso.moh.gov.my/outbreak-portal-hqa/index>. The approval is subject to Ministry of Health Risk Assessment.

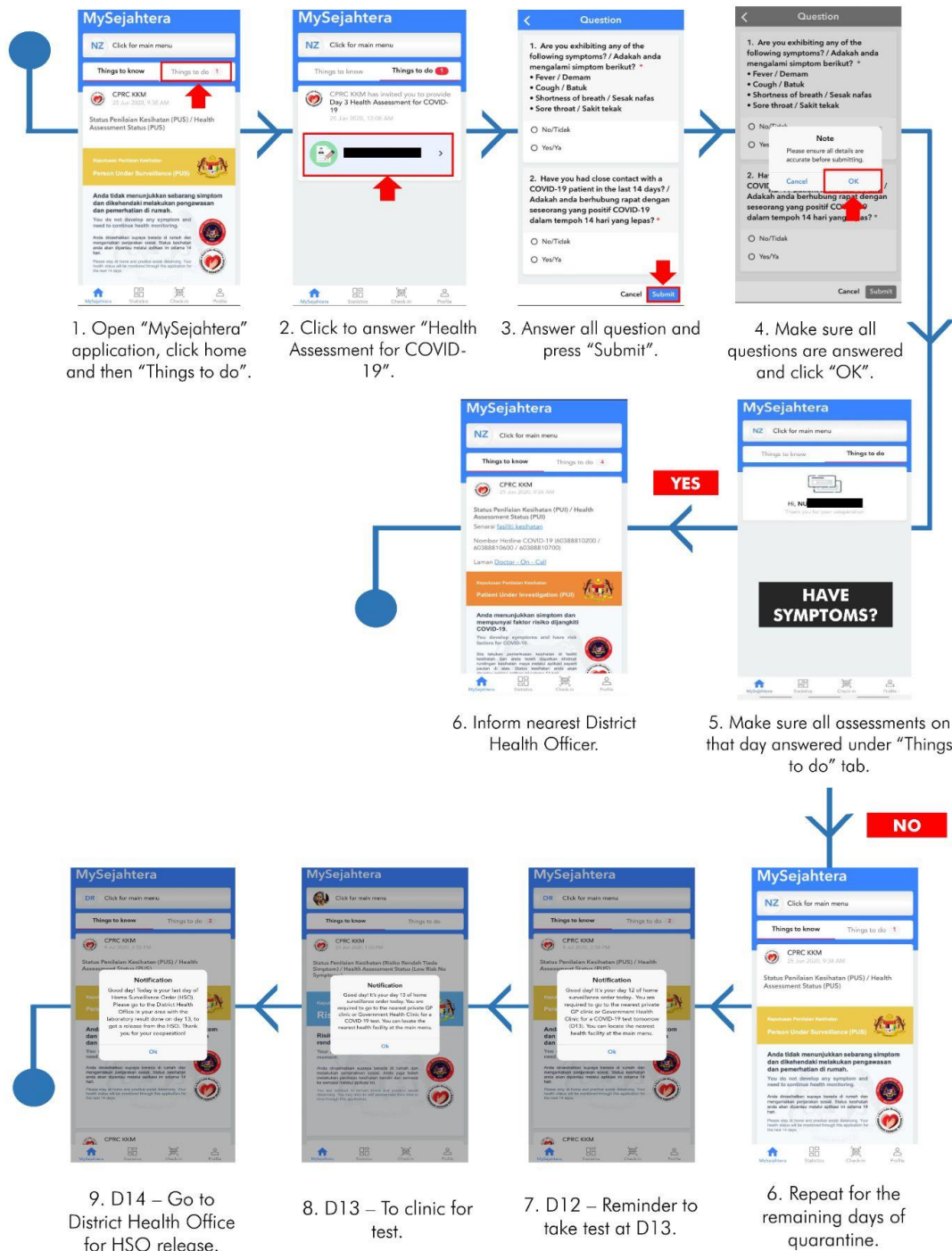


9. All passengers are required to install the MySejahtera application on their phones and scan the QR CODE "Travelers from Abroad" via the app at the international arrival. This is for contact tracing purposes. The app is developed by the Government of Malaysia especially for Malaysians and Non-Malaysians returning or visiting Malaysia starting from departure, upon arrival, and during the quarantine periods.
 - Passengers may visit <https://mysejahtera.malaysia.gov.my> or https://mysejahtera.malaysia.gov.my/traveler_en/ for more information.

BEFORE DEPARTURE TO MALAYSIA

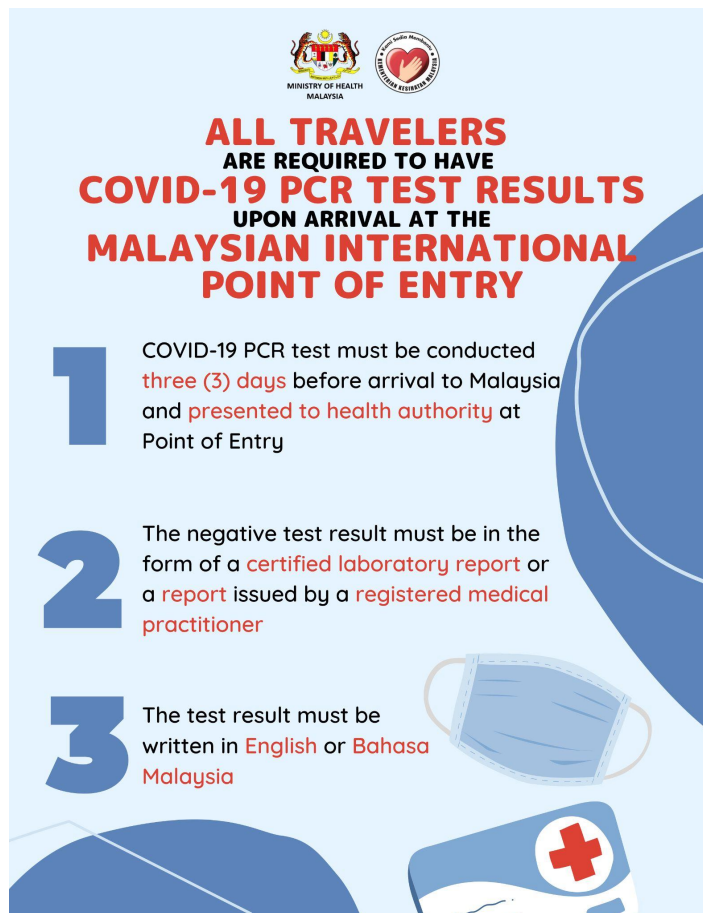



USE OF MYSEJAHTERA DURING 14 DAYS OF QUARANTINE



10. All international arrival passengers with onward connection to following domestic stations and have obtained “**Home Quarantine**” approval can continue their journey. They will be given the quarantine wristband/ surveillance bracelets upon arrival at the destination’s airport and undergo a 7-days quarantine period.

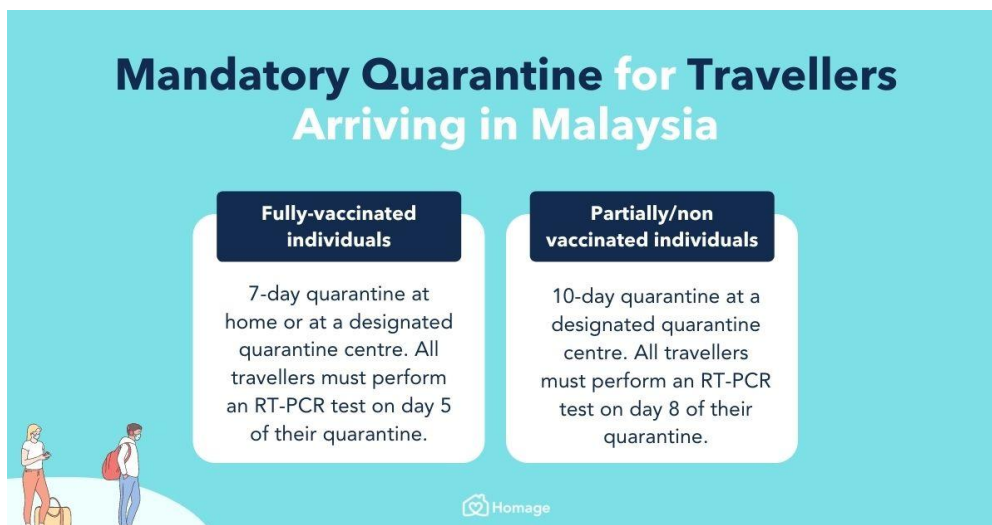
- Sabah
- Sarawak
- Labuan
- Penang
- Langkawi



**ALL TRAVELERS
ARE REQUIRED TO HAVE
COVID-19 PCR TEST RESULTS
UPON ARRIVAL AT THE
MALAYSIAN INTERNATIONAL
POINT OF ENTRY**

- 1** COVID-19 PCR test must be conducted **three (3) days** before arrival to Malaysia and **presented to health authority** at Point of Entry
- 2** The negative test result must be in the form of a **certified laboratory report** or a **report** issued by a **registered medical practitioner**
- 3** The test result must be written in **English** or **Bahasa Malaysia**



11. Meanwhile, those with onward connection to the following domestic station will be given and are required to wear the wristband at KLIA. The passengers will also receive a letter “*Kebenaran Menaiki Kenderaan Awam*” issued by the Medical Officer (MO) at KLIA before continuing flying to the domestic airports.

- Alor Setar
- Kota Bharu
- Terengganu
- Kuantan
- Johor

12. Foreign passengers transiting in KLIA with onward connection to other international destinations. For example LHR-KUL-MNL are not allowed to take the RT-PCR test COVID-19 in KLIA due to the high cases in COVID-19 in Malaysia.

- Passengers are advised to refer to the Official Portal of Immigration Department of Malaysia for detailed information.
- All Malaysian passengers must be fully vaccinated to travel to any international destinations as per the requirement by Malaysian Immigration.



Exit Requirements for Malaysians

1. Effective **2 December 2021**, Malaysians are not allowed to travel to high-risk countries such as South Africa, Lesotho, Eswatini, Namibia, Botswana, Zimbabwe, Mozambique and Malawi.
2. All Malaysians who have been fully vaccinated are allowed to travel abroad without presenting the MyTravelPass approval.
3. Children or dependent, 17 years old and below must be accompanied by a fully vaccinated parent or legal guardian.
4. Travellers are to refer to destination country travel rules and Official Portal of Immigration Department of Malaysia to understand the specific requirements (such as COVID-19 testing or quarantine measures) as these may differ according to each country's own risk assessments.

For detailed information, please refer to <https://www.imi.gov.my/>

Refer to this link to apply My Travel Pass :

https://www.imi.gov.my/portal2017/images/fail_pengumuman/2020/10_Okt/MTP_2.0_v2.pdf