



MV EXPLOSION VENTS AND STOCKING PROGRAM

10-day lead time available for common sizes of
the MV-RD, MV-RF and MV-CD explosion vents







MV Explosion Vents

OsecoElfab’s MV family of explosion vents are designed with the most common venting applications in mind. The MV family offers the industry’s best performance tolerance of +/- 0.25 psig, and consists of the MV-RD, MV-RF, MV-CD and MV-CF vents. Each of these vents meets the requirements of the OHSA Combustible Dust National Emphasis Program and NFPA 68.

A 10-day lead time is available in the USA for common sizes of MV-RD, MV-RF and MV-CD.



Vent	Shape	Vacuum (psig)	Max relief area (inches²)	Operating Ratio	Common Applications
MV-RD		-12	1533	80%	<div>BH</div> <div>DC</div> <div>BS</div>
MV-RF		-2	1533	60%	<div>BH</div> <div>BS</div>
MV-CD		-14.7	955	70%	<div>DW</div> <div>BS</div>
MV-CF		n/a	840	50%	<div>DW</div>

The OsecoElfab difference

- **Performance**
 - Highest vacuum ratings
 - Industry-best performance tolerance
 - High cycling
 - **Technical Support?**
 - Need help calculating Kst? Contact us on 800-395-3475 for fast engineering support.



- Longer service life
 - Peace of mind
 - Less maintenance
 - **Available 24/7/365**
 - **Quality accredited systems**
 - **Dependable delivery**

MV-RD Rectangular Domed

BH

DC

BS

- Cycle tested beyond 100,000 cycles
- Single membrane design, no fluoropolymer membrane
- Temperature range: -20°F to 150°F
- ±.25 psig performance tolerance



Meets NFPA regulations



Meets NFPA regulations

MV-RF Rectangular Flat

BH

BS

- Available with FDA-approved gaskets for sanitary applications
- Temperature range: -20°F to 450°F
- ±.25 psig performance tolerance

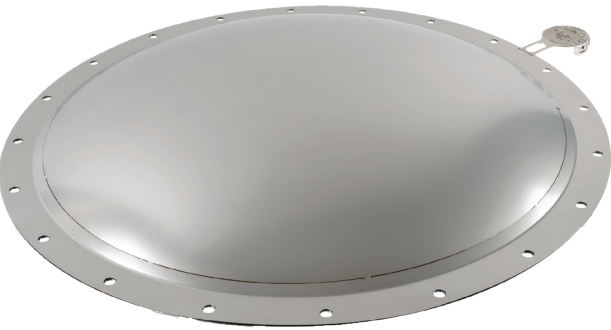


MV-CD Circular Domed

DW

BS

- Excellent for high cycling applications
- Temperature range: -20°F to 450°F
- ±.25 psig performance tolerance



Meets NFPA regulations



Meets NFPA regulations

MV-CF Circular Flat

DW

- Temperature range: -20°F to 450°F
- ±.25 psig performance tolerance



Contact our customer service team for assistance at +1 (918) 258-5626 / (800) 395-3475 (toll free) or visit us at www.osecoelfab.com

EXPLOSION VENT STOCKING PROGRAM

OsecoElfab's MV family of explosion vents are designed with the most common explosion venting applications in mind.

A 10-day lead time is available in the USA for the following sizes of MV-RD, MV-RF and MV-CD.

SIZE (inches)	RELIEF AREA (inches ²)	BURST PRESSURE (psig @72°F)	VACUUM (psig)
MV-RD			
18 x 35	595	1.5	12
24 x 24	546	1.5	12
24 x 36	825	1.5	12
36 x 36	1251	1.5	12
36 x 44	1533	1.5	12
MV-RF			
12 x 24	264	1.5	2
18 x 35	595	1.5	2
24 x 36	825	1.5	2
36 x 44	1533	1.5	2
MV-CD			
24 Round	415	1.5	14.7
30 Round	650	1.5	14.7
36 Round	955	1.5	14.7

Our innovative product design allows for a 2-year warranty. Contact us to ask for specific warranty details.



Industry-best Lead Times

1. Minimize downtime
2. Reduce inventory to manage
3. Enable lower budgets

Standard Market Sizes

1. Ease of selection
2. Less margin of error
3. Less size variability

Let us help you with all your pressure relief questions.

UK office | North Shields

+44 (0)191 293 1234 | uksales@osecoelfab.com

US office | Broken Arrow

+1 (918) 258 5626 | info@osecoelfab.com

osecoelfab.com