



COOPERATIVE MONTH

COME CELEBRATE YOUR COOPERATIVE MEMBERSHIP



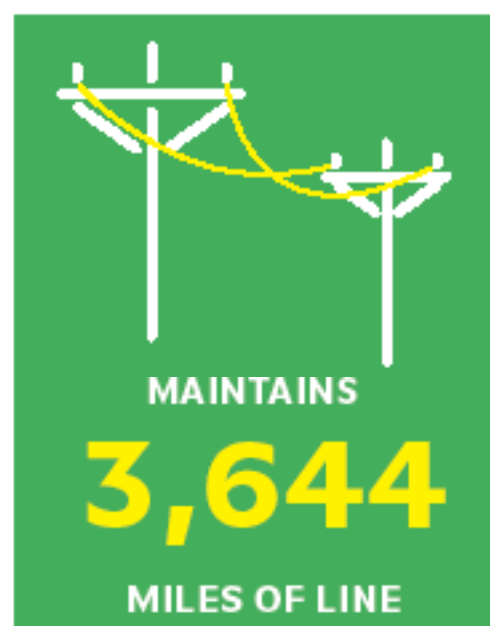
When: Tuesday, October 17th (9am-2pm)

Where: Wild Rice Electric Headquarters (502 N Main St, Mahanomen)

Come see an all-electric Ford F-150 Lightning, tour the facility, learn about services that can save you money and enjoy refreshments and register for prizes!

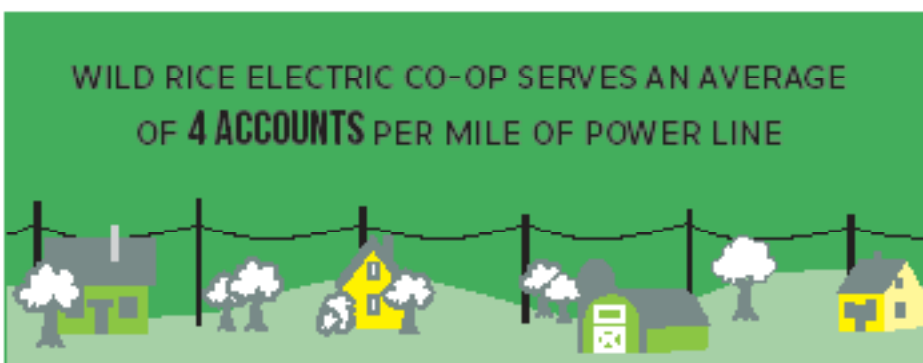


Wild Rice Electric by the numbers



APPROXIMATELY **40**
MILES EAST AND WEST
BY **80** MILES NORTH
AND SOUTH.

IT COVERS ALL OF
MAHANOMEN COUNTY AND
PARTS OF POLK, NORMAN,
CLAY, BECKER AND
CLEARWATER COUNTIES.





STAFF COMMENTS

Director of Finance

AROUND THE CO-OP ... by Crystal Askelson

October is Cooperative month and I am happy to announce to our members that we have exciting changes coming to the Cooperative in November! Wild Rice Electric is in the process of converting our enterprise software. We are pleased to announce our partnership with another cooperative, National Information Solutions Cooperative (NISC). Just like you are a member-owner of Wild Rice Electric, Wild Rice Electric is now a member-owner of NISC. As seen on the back cover, NISC will provide Wild Rice Electric's members with a new statement look, an updated app, and new ways to pay. As well as a new website for members to review their usage, pay their bill, and manage notifications from the cooperative. While change comes with a learning curve, we are confident that our new partnership with NISC comes with the mem-

bers best interest in mind and offers member-friendly tools, information, and accessibility. Stay tuned for more information to come!

2023 Financial update as of the end of July. Wild Rice Electric's total margins are slightly ahead of budget by approximately \$290,000. Actual sales are down from budget approximately \$560,000.



It's harvest time
Look out for overhead lines when entering and exiting fields.

budget that means actual cost of power expense is down from budget approximately \$340,000. The lower cost of power helps offset the lower sales. Controllable expenses are also down from budget approximately \$500,000. As we finish out 2023, our controllable expenses will start to align with budgeted expenses.

Remember to join us on October 17th from 9 a.m.-2 p.m. as we celebrate Cooperative month at the headquarters. Check out Minnkota's Ford Lightning that will be onsite. I heard it has a cool "frunk."

More details can be found on cover. I would like to take a moment to thank our members. Without our members, Wild Rice Electric would not be so successful. Remember when the co-op makes a profit, we return it to the members! The allocation and payout of capital credits is what sets cooperatives aside from investor-owned utilities.

Highlights from the Board Room:

The Board of Director's held its monthly meeting on July 25, 2023. During the meeting, discussion was held on the NRECA Compensation Model, as well as the Distributed Generation (DG) and Return on Investment report.

A quorum of directors was present and the following actions were taken:

- **Approved** the financial reports and statements for June 2023
- **Accepted** the second quarter review report presented by the Financial Review Committee
- **Approved** the appointment of delegates and alternates for the NRECA Region 5 & 6 meetings
- **Approved** the monthly Cooperative Policy Review Report with adoption or amendments to four policies
- **Accepted** the department and CEO reports
- **Accepted** the Minnkota Power report
- **Accepted** the Square Butte report
- **Accepted** the MREA report

The October regular meeting of the Board of Directors will be held on Tuesday, October 31, 2023.



The average home in our area can be powered for about **\$5 a day** – the price of the perfect jack-o'-lantern pumpkin!

VALUING EVERYTHING THAT POWERS YOUR DAY.

THAT'S THE VALUE OF ELECTRICITY.



OUR SEVEN COOPERATIVE PRINCIPLES

October is National Cooperative Month and **Wild Rice Electric Cooperative** is proud to be the local electric cooperative for your region! As a cooperative, we operate a little differently than other electric utilities. Since we are member-owned and operated, we are rooted in seven key cooperative principles that guide us in always putting our member's needs first.



COOPERATION AMONG COOPERATIVES

By cooperatives working together through local, national, regional and international structures, we can improve services, bolster local economies, and deal more effectively with social and community needs.

DEMOCRATIC MEMBER CONTROL



Members actively shape policies and choices for our cooperative. Directors are elected from within our membership and held accountable by our members. All members also have equal voting rights.



OPEN AND VOLUNTARY MEMBERSHIP

Membership is open to anyone who would reasonably use our services and embraces membership responsibilities, regardless of their background.



MEMBERS' ECONOMIC PARTICIPATION

Members invest fairly and control the cooperative's capital. Part of the capital remains the common property of the cooperative. Any surpluses are allocated by the members to serve goals like growth, reserve funds, and approved ventures – and some even comes back to members in the form of capital credits!



EDUCATION, TRAINING AND INFORMATION

Education empowers growth for the members, representatives and staff of **Wild Rice Electric**. Spreading cooperative awareness enhances understanding of the cooperative and the cooperative way to the community and beyond.



AUTONOMY AND INDEPENDENCE

Cooperatives are autonomous organizations controlled by their members! If the cooperative enters into an agreement with an organization or raises capital from an external source, it does so on terms that ensure democratic control for the membership.

CONCERN FOR COMMUNITY

As a cooperative, we are devoted to the sustainable development of our communities shaped by our member-supported policies.



Thank you to our members for your trust and stewardship throughout Wild Rice Electric's 84 years of providing affordable, reliable and safe energy to the region.

Minnesota Rural Electric Association (representing rural electric cooperatives), other utilities including Minnesota Power, Otter Tail Power, Xcel Energy, and the Minnesota Municipal Utilities Association (representing municipal power utilities)



joined with the Minnesota Farm Bureau, Minnesota Farmers Union, the Cooperative Network and the Minnesota Municipal

Utilities Association in developing an important tool for dealing with stray voltage challenges. Also joining in the effort and research were the Minnesota Department of Labor and Industry and Department of Agriculture. As a result, the Minnesota Stray Voltage Guide is available for livestock organizations across the state and is being used to address any concerns that may arise.

The presence of stray voltage is a normal result of electricity traveling through utility distribution systems, which must be grounded to earth to ensure safe and reliable operation. However, if problems occur, the level of voltage present on a farm can reach levels that could impact livestock. Dairy farmers are our member-owners. The Guide provides another tool to ensure any challenges they may be experiencing in this area are being addressed.

Other states have adopted standard practices to address stray voltage concern, and there has been a lot of research done. This research was used in developing this guide, and has served as the foundation for the development of standards in other states. The entire guidebook can be downloaded at minnesotastrayvoltageguide.com. There is no cost to download the guidebook. As always we encourage anyone with questions to contact us.

Ads

For Sale

1939 M international tractor narrow front, loader, gas, Serial #1575. Jiffy 8" gas ice auger. 100 porcelain dolls. Small Silvio Fanelli accordion. 218-280-2227.

John Deere 112, for parts, 218-849-5002.

4-285/45/22" tires on Chevy chrome wheels, \$500. 1984 motor home w/ 454 motor needs water pump (included), \$800. 8'x6' flatbed on 4" channel frame, \$400. ATV/ motorcycle jack still in box, \$200. 7" wet tile saw used twice, \$100, 701-405-4991, text only.

1969 Ford 500 6-cylinder manual trans, equipped w/ a model L-36 Asplundh line lift (aerial) bucket 36ft height, capacity. Always in shed - needs brake work. \$3,500 obo, 218-435-6820.

Good assortment new & used skid steer attachments. Grapples, brush mowers, buckets, pallet forks, 701-261-3574.

Massey-Ferguson 81 Hay tender. Good running condition. \$350 firm. JD 70 for parts, includes trip bucket loader. JD A for parts. First reasonable offer takes one or both. 218-563-2469.

22-foot bunk pontoon trailer. Paddle boat, 701-219-1486.

1995 Diamond D 12 ft stock trailer tandem axle goose neck, \$2,500. Heavy duty 3- pt post hole auger, \$450. Rear tine cub cadet garden tiller, \$300, 218-850-4928.

Necchi portable sewing machine, \$50. Yamaha acoustic guitar - black, \$75. Whirling roof vent, \$20. 2 - large regular suitcase, \$20 each. GE phone answering system, \$20, 218-687-3407.

6 1/8" Craftsman jointer w/stand \$300. Farmall H grill & hood \$300. Franklin stove \$25. (2) metal Drafting tables (make good quilting tables) \$75 ea. Heavy duty metal shop table on wheels 6x6' top \$75. Heavy metal shop desk \$50. Tractor tire chains for WD \$75, call 218-483-4610.

Boss snow plow 6'6" UTV power VXT, fastener kit, UC Honda Pioneer 2014. New \$4,000 asking \$2,000 obo, 218-983-3498, lv message.

2 cords of split seasoned hardwood \$180 per cord. Maple & oak saplings dig your own \$5 ea, 218-849-5607.

1990 Sheyenne pickup. Engine overhauled by Berg Motors, low miles on overhaul. 4 bolt main. Drive train is good condition, new spine gears. Body rusty, \$550. Also 32 ft 5th wheel trailer. Triple axle goose neck, good tires & ramps. Official Vikings football jersey. Stitched numbers and lettering. Never worn. Sell less than new price, 701-715-2837. No Saturday calls.

1981 Lund 16' boat. Shore gal trail all roller. ST175/ 80R 13" tires, 218-983-3498, lv message.

DP BodyTone Multi-gym; Weider Home Gym; Maytag Washer and Electric Dryer plus pedestals (4 years old), 218-483-4203.

2005 ABU 7' x 18' 10,000 lb. capacity car hauler trailer. Excellent condition. Always stored inside when not in use, \$3,000. 218-238-5882.

Ruger Model 7730-06. Woodstock. Blued \$750. 3x9 Bushnell scope, \$100, 218-847-7824.

Double throw switch for electric, 218-435-6530.

Circle saw arbor & belt. Walk behind snowblower (as is) new tires, 584-4603.

Large round bales 5x5 alfalfa or chard grass hay inside 1-3 crops. 32" Larson storm door, 218-596-8383/ 218-227-9034.

2 handcrafted ship or utility counters on 4" casters. 4' x 2' wide, 30" high / custom made counter tops - either ivory or tan, brown marbled designed - \$100 ea, 218-687-3407.

Good used traps- Leghold & conibear all sizes No. 0 (gopher) to No. 14 (wolf). Large amount of bathroom tile 2" & 4". Old wheels wooden & metal. Glass bottles -pt, qts, half gallon & gallon. Bicycles. Tanned fur & native American crafts, 218-375-3109.

UTV tires 27-11-14 two for \$50. Ruff cut 48" mower, \$950. 14ft Jon boat, \$300. New radiator core for T-600, T-800 Kenworth, \$775, 218-935-5110.

Wanted

Early 1950s Willy Jeep pickup for parts, 218-841-8739 & lv message.

Yellow water slide for cabin at Maple Lake, 701-360-1891.

Older wooden spear house in good shape (4x6's preferred), 218-849-5607.

Lily pad for the lake, 218-457-3000.

Black Angus cow wanted April or May that has had one cow. 4x4 good older pickup, 584-4603.

Pickup or grain truck from the 1940's /50's w/ or w/out title. 218-208-9973.

Our Ad Policy

- Ads are published for members at no charge as space permits on a first-come, first served basis.
- Ads are due by the 10th of the month prior to publication.
- No real estate or commercial ads will be accepted.
- Ads must be resubmitted to run an additional month.
- Ads must be typed or in clear readable print. We reserve the right to edit or reject any ad.
- Ads will be abbreviated at the coop's discretion.
- You can submit your ad by mail, email, or drop off in office. Phone ads will not be accepted.
- Email ads to . . . info@wildriceelectric.com
- Mail ads to . . . Wild Rice Electric P.O. Box 438 Mahnomen, MN 56557

COLD WEATHER RULE

In accordance with Minnesota's Cold Weather Rule (216B.096), electric service cannot be disconnected for nonpayment between Oct. 1 and April 30 if electricity is the primary heat source and ALL of the following statements apply:

- Your household income is at or below 50% of the state median household income. Income may be verified on forms provided by Wild Rice Electric Cooperative or by the local energy assistance provider.
- You enter into and make reasonably timely payments under a payment agreement that considers the financial resources of the household.
- You receive referrals to energy assistance, weatherization, conservation or other programs likely to reduce your energy bills from Wild Rice Electric Cooperative.

Minnesota's Cold Weather Rule does not completely stop winter disconnects.

Before disconnecting electric service to residential members between Oct. 1 and April 30, Wild Rice Electric Cooperative must provide:

- A 30-day notice of disconnection;
- A statement of members' rights and responsibilities;
- A list of local energy assistance providers;
- Forms on which to request Cold Weather Rule protection; and
- A statement explaining available payment plans and other options to continue service.

ENERGY ASSISTANCE PROGRAM

The Energy Assistance Program (EAP) is a federally funded program through the U.S. Department of Health and Human Services, which helps low-income renters and homeowners pay for home heating costs and furnace repairs. Household income must be at or below the state median income (\$62,822 for a family of four) to qualify for benefits. Applications must be received or postmarked by May 31, 2024.

To learn more about the EAP program or to apply for assistance:

- Visit the Minnesota Department of Commerce Energy Assistance website, <https://mn.gov/commerce/consumers/consumer-assistance/energy-assistance/>, for more details and to access the application portal.
- Contact your county EAP service provider for additional information and assistance.

Mahube Community Council
PO Box 76
Mahnomen, MN 56557
218-935-5022

West Central Minnesota Communities Action, Inc.
715 11th St N Suite100
Moorhead, MN 56560
800-492-4805/ 218-685-4486

Mahube Community Council
PO Box 747
Detroit Lakes, MN 56502
218-847-1385

Energy Assistance Program
3303 US Hwy 59/ PO Box 418
White Earth, MN 56591
218-473-2711 or 888-458-1385

Inter County Community Council
PO Box 189
Oklee, MN 56742
218-796-5144/ 888-778-4008

Tri-Valley Opportunity Council
102 N Broadway/ PO Box 607
Crookston, MN 56716
218-281-5832/ 800-584-7020

Wild Rice Electric Cooperative exists because of you, and we are dedicated to the people and communities we serve. If you are having difficulty paying your electric bill and do not qualify for either of these programs, please contact us immediately to work out a mutually agreeable payment plan.

USPS Statement of Ownership

UNITED STATES POSTAL SERVICE® Statement of Ownership, Management, and Circulation (All Periodicals Publications Except Requester Publications)

1. Publication Title: **Rural DeLight**

2. Issue Frequency: **Monthly**

3. Issue Date for Circulation Data Below: **9-08-2023**

4. Annual Subscription Price: **\$1 member \$2 non-member**

5. Complete Mailing Address of Known Office of Publication (Not printer) (Street, city, county, state and ZIP+4®):
**WILD RICE ELECTRIC COOPERATIVE, INC.
502 N MAIN ST., PO BOX 438
MAHNOMEN, MN 56557**

6. Complete Mailing Address of Headquarters or General Business Office of Publisher (Not printer):
**WILD RICE ELECTRIC COOPERATIVE, INC.
502 N MAIN ST., PO BOX 438
MAHNOMEN, MN 56557**

7. Full Names and Complete Mailing Addresses of Publisher, Editor, and Managing Editor (Do not leave blank):
Publisher (Name and complete mailing address):
**THOMAS HOUBEK, C/O WILD RICE ELECTRIC COOPERATIVE, INC.
502 N MAIN ST., PO BOX 438
MAHNOMEN, MN 56557**
Editor (Name and complete mailing address):
**THOMAS HOUBEK, C/O WILD RICE ELECTRIC COOPERATIVE, INC.
502 N MAIN ST., PO BOX 438
MAHNOMEN, MN 56557**
Managing Editor (Name and complete mailing address):
**THOMAS HOUBEK, C/O WILD RICE ELECTRIC COOPERATIVE, INC.
502 N MAIN ST., PO BOX 438
MAHNOMEN, MN 56557**

8. Owner (Do not leave blank. If the publication is owned by a corporation, give the name and address of the corporation immediately followed by the names and addresses of all stockholders owning or holding 1 percent or more of the total amount of stock. If not owned by a corporation, give the names and addresses of the individual owners. If owned by a partnership or other unincorporated firm, give its name and address, as well as those of each individual owner. If the publication is published by a nonprofit organization, give its name and address.)
Full Name: **WILD RICE ELECTRIC COOPERATIVE, INC.** 502 N MAIN ST., PO BOX 438, MAHNOMEN, MN 56557

9. Known Bondholders, Mortgagees, and Other Security Holders Owning or Holding 1 Percent or More of Total Amount of Bonds, Mortgages, or Other Securities. If none, check box: ☒ None

10. For completion by nonprofit organizations authorized to mail at nonprofit rates (Check one):
☐ The purpose, function, and nonprofit status of this organization and the exempt status for federal income tax purposes:
☐ Has Not Changed During Preceding 12 Months
☒ Has Changed During Preceding 12 Months (Publisher must submit explanation of change with this statement)

PS Form 3526, July 2014 (Page 1 of 4 Use instructions page 42) PSN: 7530-01-000-9001 PRIVACY NOTICE: See our privacy policy at www.usps.com

11. Publication Title: **Rural DeLight**

12. Issue Date for Circulation Data Below: **9-08-2023**

13. Extent and Nature of Circulation

a. Total Number of Copies (Net press run)	
1. Total Paid Distribution (Sum of 13b(1), (2), (3), and (4))	9,438
2. Total Free or Nominal Rate Distribution (Sum of 13b(5), (6), (7), and (8))	107
3. Total Paid Distribution (Sum of 13b(1), (2), (3), and (4))	9,438
4. Total Free or Nominal Rate Distribution (Sum of 13b(5), (6), (7), and (8))	107
5. Total Paid Distribution (Sum of 13b(1), (2), (3), and (4))	9,438
6. Total Free or Nominal Rate Distribution (Sum of 13b(5), (6), (7), and (8))	107
7. Total Paid Distribution (Sum of 13b(1), (2), (3), and (4))	9,438
8. Total Free or Nominal Rate Distribution (Sum of 13b(5), (6), (7), and (8))	107
9. Total Paid Distribution (Sum of 13b(1), (2), (3), and (4))	9,438
10. Total Free or Nominal Rate Distribution (Sum of 13b(5), (6), (7), and (8))	107
11. Total Paid Distribution (Sum of 13b(1), (2), (3), and (4))	9,438
12. Total Free or Nominal Rate Distribution (Sum of 13b(5), (6), (7), and (8))	107
13. Total Paid Distribution (Sum of 13b(1), (2), (3), and (4))	9,438
14. Total Free or Nominal Rate Distribution (Sum of 13b(5), (6), (7), and (8))	107
15. Total Paid Distribution (Sum of 13b(1), (2), (3), and (4))	9,438
16. Total Free or Nominal Rate Distribution (Sum of 13b(5), (6), (7), and (8))	107
17. Total Paid Distribution (Sum of 13b(1), (2), (3), and (4))	9,438
18. Total Free or Nominal Rate Distribution (Sum of 13b(5), (6), (7), and (8))	107
19. Total Paid Distribution (Sum of 13b(1), (2), (3), and (4))	9,438
20. Total Free or Nominal Rate Distribution (Sum of 13b(5), (6), (7), and (8))	107
21. Total Paid Distribution (Sum of 13b(1), (2), (3), and (4))	9,438
22. Total Free or Nominal Rate Distribution (Sum of 13b(5), (6), (7), and (8))	107
23. Total Paid Distribution (Sum of 13b(1), (2), (3), and (4))	9,438
24. Total Free or Nominal Rate Distribution (Sum of 13b(5), (6), (7), and (8))	107
25. Total Paid Distribution (Sum of 13b(1), (2), (3), and (4))	9,438
26. Total Free or Nominal Rate Distribution (Sum of 13b(5), (6), (7), and (8))	107
27. Total Paid Distribution (Sum of 13b(1), (2), (3), and (4))	9,438
28. Total Free or Nominal Rate Distribution (Sum of 13b(5), (6), (7), and (8))	107
29. Total Paid Distribution (Sum of 13b(1), (2), (3), and (4))	9,438
30. Total Free or Nominal Rate Distribution (Sum of 13b(5), (6), (7), and (8))	107
31. Total Paid Distribution (Sum of 13b(1), (2), (3), and (4))	9,438
32. Total Free or Nominal Rate Distribution (Sum of 13b(5), (6), (7), and (8))	107
33. Total Paid Distribution (Sum of 13b(1), (2), (3), and (4))	9,438
34. Total Free or Nominal Rate Distribution (Sum of 13b(5), (6), (7), and (8))	107
35. Total Paid Distribution (Sum of 13b(1), (2), (3), and (4))	9,438
36. Total Free or Nominal Rate Distribution (Sum of 13b(5), (6), (7), and (8))	107
37. Total Paid Distribution (Sum of 13b(1), (2), (3), and (4))	9,438
38. Total Free or Nominal Rate Distribution (Sum of 13b(5), (6), (7), and (8))	107
39. Total Paid Distribution (Sum of 13b(1), (2), (3), and (4))	9,438
40. Total Free or Nominal Rate Distribution (Sum of 13b(5), (6), (7), and (8))	107
41. Total Paid Distribution (Sum of 13b(1), (2), (3), and (4))	9,438
42. Total Free or Nominal Rate Distribution (Sum of 13b(5), (6), (7), and (8))	107
43. Total Paid Distribution (Sum of 13b(1), (2), (3), and (4))	9,438
44. Total Free or Nominal Rate Distribution (Sum of 13b(5), (6), (7), and (8))	107
45. Total Paid Distribution (Sum of 13b(1), (2), (3), and (4))	9,438
46. Total Free or Nominal Rate Distribution (Sum of 13b(5), (6), (7), and (8))	107
47. Total Paid Distribution (Sum of 13b(1), (2), (3), and (4))	9,438
48. Total Free or Nominal Rate Distribution (Sum of 13b(5), (6), (7), and (8))	107
49. Total Paid Distribution (Sum of 13b(1), (2), (3), and (4))	9,438
50. Total Free or Nominal Rate Distribution (Sum of 13b(5), (6), (7), and (8))	107
51. Total Paid Distribution (Sum of 13b(1), (2), (3), and (4))	9,438
52. Total Free or Nominal Rate Distribution (Sum of 13b(5), (6), (7), and (8))	107
53. Total Paid Distribution (Sum of 13b(1), (2), (3), and (4))	9,438
54. Total Free or Nominal Rate Distribution (Sum of 13b(5), (6), (7), and (8))	107
55. Total Paid Distribution (Sum of 13b(1), (2), (3), and (4))	9,438
56. Total Free or Nominal Rate Distribution (Sum of 13b(5), (6), (7), and (8))	107
57. Total Paid Distribution (Sum of 13b(1), (2), (3), and (4))	9,438
58. Total Free or Nominal Rate Distribution (Sum of 13b(5), (6), (7), and (8))	107
59. Total Paid Distribution (Sum of 13b(1), (2), (3), and (4))	9,438
60. Total Free or Nominal Rate Distribution (Sum of 13b(5), (6), (7), and (8))	107
61. Total Paid Distribution (Sum of 13b(1), (2), (3), and (4))	9,438
62. Total Free or Nominal Rate Distribution (Sum of 13b(5), (6), (7), and (8))	107
63. Total Paid Distribution (Sum of 13b(1), (2), (3), and (4))	9,438
64. Total Free or Nominal Rate Distribution (Sum of 13b(5), (6), (7), and (8))	107
65. Total Paid Distribution (Sum of 13b(1), (2), (3), and (4))	9,438
66. Total Free or Nominal Rate Distribution (Sum of 13b(5), (6), (7), and (8))	107
67. Total Paid Distribution (Sum of 13b(1), (2), (3), and (4))	9,438
68. Total Free or Nominal Rate Distribution (Sum of 13b(5), (6), (7), and (8))	107
69. Total Paid Distribution (Sum of 13b(1), (2), (3), and (4))	9,438
70. Total Free or Nominal Rate Distribution (Sum of 13b(5), (6), (7), and (8))	107
71. Total Paid Distribution (Sum of 13b(1), (2), (3), and (4))	9,438
72. Total Free or Nominal Rate Distribution (Sum of 13b(5), (6), (7), and (8))	107
73. Total Paid Distribution (Sum of 13b(1), (2), (3), and (4))	9,438
74. Total Free or Nominal Rate Distribution (Sum of 13b(5), (6), (7), and (8))	107
75. Total Paid Distribution (Sum of 13b(1), (2), (3), and (4))	9,438
76. Total Free or Nominal Rate Distribution (Sum of 13b(5), (6), (7), and (8))	107
77. Total Paid Distribution (Sum of 13b(1), (2), (3), and (4))	9,438
78. Total Free or Nominal Rate Distribution (Sum of 13b(5), (6), (7), and (8))	107
79. Total Paid Distribution (Sum of 13b(1), (2), (3), and (4))	9,438
80. Total Free or Nominal Rate Distribution (Sum of 13b(5), (6), (7), and (8))	107
81. Total Paid Distribution (Sum of 13b(1), (2), (3), and (4))	9,438
82. Total Free or Nominal Rate Distribution (Sum of 13b(5), (6), (7), and (8))	107
83. Total Paid Distribution (Sum of 13b(1), (2), (3), and (4))	9,438
84. Total Free or Nominal Rate Distribution (Sum of 13b(5), (6), (7), and (8))	107
85. Total Paid Distribution (Sum of 13b(1), (2), (3), and (4))	9,438
86. Total Free or Nominal Rate Distribution (Sum of 13b(5), (6), (7), and (8))	107
87. Total Paid Distribution (Sum of 13b(1), (2), (3), and (4))	9,438
88. Total Free or Nominal Rate Distribution (Sum of 13b(5), (6), (7), and (8))	107
89. Total Paid Distribution (Sum of 13b(1), (2), (3), and (4))	9,438
90. Total Free or Nominal Rate Distribution (Sum of 13b(5), (6), (7), and (8))	107
91. Total Paid Distribution (Sum of 13b(1), (2), (3), and (4))	9,438
92. Total Free or Nominal Rate Distribution (Sum of 13b(5), (6), (7), and (8))	107
93. Total Paid Distribution (Sum of 13b(1), (2), (3), and (4))	9,438
94. Total Free or Nominal Rate Distribution (Sum of 13b(5), (6), (7), and (8))	107
95. Total Paid Distribution (Sum of 13b(1), (2), (3), and (4))	9,438
96. Total Free or Nominal Rate Distribution (Sum of 13b(5), (6), (7), and (8))	107
97. Total Paid Distribution (Sum of 13b(1), (2), (3), and (4))	9,438
98. Total Free or Nominal Rate Distribution (Sum of 13b(5), (6), (7), and (8))	107
99. Total Paid Distribution (Sum of 13b(1), (2), (3), and (4))	9,438
100. Total Free or Nominal Rate Distribution (Sum of 13b(5), (6), (7), and (8))	107

PS Form 3526, July 2014 (Page 2 of 4)

UNITED STATES POSTAL SERVICE® Statement of Ownership, Management, and Circulation (All Periodicals Publications Except Requester Publications)

1. Publication Title: **Rural DeLight**

2. Issue Frequency: **Monthly**

3. Issue Date for Circulation Data Below: **9-08-2023**

4. Annual Subscription Price: **\$1 member \$2 non-member**

5. Complete Mailing Address of Known Office of Publication (Not printer) (Street, city, county, state and ZIP+4®):
**WILD RICE ELECTRIC COOPERATIVE, INC.
502 N MAIN ST., PO BOX 438
MAHNOMEN, MN 56557**

6. Complete Mailing Address of Headquarters or General Business Office of Publisher (Not printer):
**WILD RICE ELECTRIC COOPERATIVE, INC.
502 N MAIN ST., PO BOX 438
MAHNOMEN, MN 56557**

7. Full Names and Complete Mailing Addresses of Publisher, Editor, and Managing Editor (Do not leave blank):
Publisher (Name and complete mailing address):
**THOMAS HOUBEK, C/O WILD RICE ELECTRIC COOPERATIVE, INC.
502 N MAIN ST., PO BOX 438
MAHNOMEN, MN 56557**
Editor (Name and complete mailing address):
**THOMAS HOUBEK, C/O WILD RICE ELECTRIC COOPERATIVE, INC.
502 N MAIN ST., PO BOX 438
MAHNOMEN, MN 56557**
Managing Editor (Name and complete mailing address):
**THOMAS HOUBEK, C/O WILD RICE ELECTRIC COOPERATIVE, INC.
502 N MAIN ST., PO BOX 438
MAHNOMEN, MN 56557**

8. Owner (Do not leave blank. If the publication is owned by a corporation, give the name and address of the corporation immediately followed by the names and addresses of all stockholders owning or holding 1 percent or more of the total amount of stock. If not owned by a corporation, give the names and addresses of the individual owners. If owned by a partnership or other unincorporated firm, give its name and address, as well as those of each individual owner. If the publication is published by a nonprofit organization, give its name and address.)
Full Name: **WILD RICE ELECTRIC COOPERATIVE, INC.** 502 N MAIN ST., PO BOX 438, MAHNOMEN, MN 56557

9. Known Bondholders, Mortgagees, and Other Security Holders Owning or Holding 1 Percent or More of Total Amount of Bonds, Mortgages, or Other Securities. If none, check box: ☒ None

10. For completion by nonprofit organizations authorized to mail at nonprofit rates (Check one):
☐ The purpose, function, and nonprofit status of this organization and the exempt status for federal income tax purposes:
☐ Has Not Changed During Preceding 12 Months
☒ Has Changed During Preceding 12 Months (Publisher must submit explanation of change with this statement)

PS Form 3526, July 2014 (Page 3 of 4) PRIVACY NOTICE: See our privacy policy at www.usps.com



PERIODICAL

Rural Delight (ISSN 0194 505X)

Published monthly by Wild Rice Electric Cooperative, Inc.,
P.O. Box 438, Mahanomen, MN 56557, in the interests of its members and others.
Periodical postage paid at Mahanomen and additional mailing offices. USPS 468-810.
POSTMASTER: Please send address changes, Form 3579 to:
Wild Rice Electric Cooperative, Inc.,
P.O. Box 438, Mahanomen, MN 56557-0438.
Subscription rates: Members, \$1/year; Non-members, \$2/year.
Phone: 218-935-2517.

Wild Rice Electric
Cooperative, Inc.

Office Hours: 8:00 a.m.- 4:30 p.m.
Monday- Friday

Telephone: 800-244-5709 or to
make a payment 833-250-4481

Website: wildriceelectric.com

Email: info@wildriceelectric.com

Also download the Wild Rice Electric app for
free at your App Store of choice, to monitor
usage, pay your bill and more.

Officers and Directors:

Chair Jim Kaiser, District 3
Vice Chair Larry Sollie, District 1
Secretary .. Mark Habedank, District 2
Treasurer Dave Hamre, District 1

District 1: Jeff Nornes

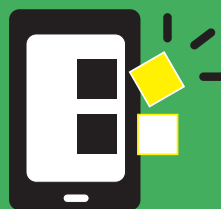
District 2: Greg LaVoy & Roger Winter

District 3: Randy Bjornson &
Russ Okeson

President & CEO Mike Wade

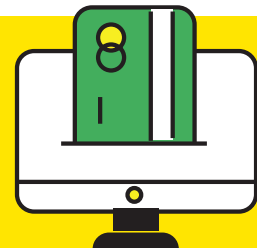
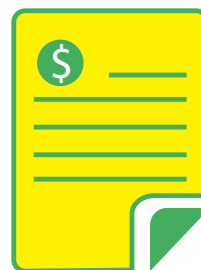
*This Institution is an equal opportunity
provider and employer.*

Coming soon to Wild Rice Electric



New app

New statement look



New ways to pay



More to come in next month's Rural Delight
Follow along on Facebook Wild Rice Electric Cooperative.

WILD RICE ELECTRIC COOPERATIVE INC. MISSION STATEMENT

Energizing our members' future.