

# FARM SAFETY

**M**ake sure EVERYONE is trained on safe practices around power transmission. This includes you, your employees, seasonal workers, family members, and anyone else accessing your farm. Keep in mind it only takes a split second for someone to come into contact with electricity.

## Reminders

■ Bigger equipment allows farmers to cover more ground in less time; however, this can be a hazard when electrical infrastructures are nearby.

■ Inexperienced, fatigued or distracted operators are more likely to come in contact with a power line or pole.

■ Sources of electricity include power lines, electrical boxes, and damaged (non-grounded) guy wires.

■ If your equipment does hit a pole, or guy wire, **do not leave the cab!** Immediately call 9-1-1, warn others to stay away, and wait for the utility crew to cut the power. In case of smoke or fire, exit the cab by making a **solid jump** out of the cab, without touching it at the same time, and hop away to safety.

■ Encourage folding and unfolding to be done well into the field, not at the field's edge, which could have power lines running next to it.

■ Be aware of power line locations in proximity to grain bins. If there is a nearby power line, always load and unload on the side without a power line.

■ Emphasize safety over speed to everyone on the farm, especially during busy seasons like harvest.



**Do not store hay bales, machinery or anything else under power lines.**





# STAFF COMMENTS

Director of Member Services  
and Communications

AROUND THE CO-OP ...

by Tommy Houdek



**Back To School Safety** – It's that exciting time of the year again as our youngsters strap on their backpacks and head back to the classroom. Let's be sure to make their educational experience a great one by ensuring safety is top priority. Be sure to slow down and be alert when driving in school zones and around school buses. Talk with your kids about safety when boarding or exiting the bus. School buses are one of the safest vehicles on the road, when drivers follow traffic laws and signs around them.

**Off-Peak Services** – As we catch some relief following a hot summer, it's not too early to think about saving on your energy bill through Wild Rice Electric's off-peak program. Wild Rice Electric's off-peak rates are very competitive and are about half of the general service rate. Our dual-heat off-peak rates equate to about

\$1.45/gallon propane, making electric heat an excellent value. Please feel free to give us a call to see how an off-peak program can help you save money!



**Wire Installation at Elbow Lake** – Wild Rice Electric crew members face many challenges when providing safe, reliable energy for its members. Electrical energy is delivered to a multitude of locations that are difficult to maneuver including sloughs, wooded areas, rocky and steep terrain, as well as lakes and islands on them. If you look above, and at the back cover of this publication, you will see a couple of our

line workers, Seth, Gary and Phil, installing replacement wire at Elbow Lake. Most of the time, our lineworkers are seen in bucket trucks, skid steers, and trenchers...but every now and then they are called to do something a little out-of-the-norm. Our dedicated crew is not afraid to roll up their sleeves... or their pant legs, in order to get the job done.

**SAFETY  
TIP**

**SAFETY FIRST**  
think **SAFE**  
work **SAFE**  
**BE SAFE**

## Highlights from the Board Room:

The Board of Directors held its monthly meeting on June 28, 2023. During the meeting, discussion was held on the Breakfast on the Farm events, and Riverview Dairy tours by employees and directors.

A quorum of directors was present and the following actions were taken:

- **Approved** the financial reports and statements for May 2023
- **Approved** April 18, 2024 for the 2024 Annual Meeting of the Membership and due to construction at the Mahnomen High School, authorized a change in venue to the Shooting Star Event Center
- **Accepted** the IRS Form 990 & 990T draft and approved their submittal
- **Approved** the monthly Cooperative Policy Review Report with adoption or amendments to six policies
- **Accepted** the department and CEO reports
- **Accepted** the Minnkota Power report
- **Accepted** the Square Butte report
- **Accepted** the MREA report

The September regular meeting of the Board of Directors will be held on Tuesday, September 26, 2023.

# 5 THINGS TO KNOW ABOUT OFF-PEAK HEATING



You often hear Wild Rice Electric Cooperative mention the off-peak heating program. Very often. That's because we get really excited about programs that offer benefits to you (the member), the cooperative and the entire regional electric grid. Here's why we think the off-peak heating program is top-notch.



There are many off-peak heating technology options to choose from

Air-source heat pumps, mini-split heat pumps, plenums, thermal storage heating, underfloor heating – you name it! We can suggest an off-peak-qualified heating system that will fit any size home or budget.



You receive a reduced electric rate when you enroll in off-peak heating

Off-peak volunteers are thanked for their flexibility with an electric heating rate that is nearly 50% lower than the standard electric rate. You could save hundreds on your electric bill over the course of a year!



Off-peak heating helps keep the regional grid reliable in the winter

In the coldest months like January and February, people are turning on their heat everywhere in the country. The national grid needs a lot of energy to meet that demand, and by temporarily reducing our co-op's energy use, we help keep the grid energized and reliable for everyone.



Off-peak heating allows the co-op to keep electricity affordable

The off-peak program allows us to lower demand when regional electric need gets higher than average. This flexibility means we can avoid expensive purchases from the energy market AND avoid building expensive new generation sources that would only be used for peak demand. That savings is passed to you in the form of stable rates.



You can receive thousands of dollars in rebates on new off-peak equipment

Talk to the Member Service department about the rebates we offer to our members.

## OFF-PEAK HEATING PROGRAM? WHAT'S THAT?

Members voluntarily sign up for the program, which allows the co-op to temporarily turn off electric heating during times of high electric demand. During these "control periods," most consumers are automatically switched to a backup heating system (like fuel oil or propane). The off-peak program can also be utilized in storage heat technologies, in which heat is collected and stored during lower-demand times of day and deployed when needed.



Learn more about the value of off-peak electricity at [ValueOfElectricity.com](http://ValueOfElectricity.com).



# Ads

## For Sale

2015 Toyota Camry, 19,000 miles, power leather seats, original owner, new no accidents. Asking blue book value/ best offer, 218-491-5660.

2- cord of split, dry maple hard wood, \$200 per cord, 218-849-5607.

A KEHO grain bin fan, 7 1/2 horse power -240 power, 218-637-0698.

Gas vent through the roof 4' has cap, \$30. Free to Air Dish, \$30. Super Dish Network, has bracket for mounting, \$60. Paddle Boat, Sea Hawk, green. 3 seats in front, 2 seats in the back. Storage in back, \$200, 651-497-4204.

12' aluminum boat w/ oars, nice shape, good duck hunting, \$300, 218-841-5849.

2005 Dodge Ram 1500 4x4, 64,000 miles, new tires, battery, water pump & thermostat, 218-846-1004, lv mess.

Red 12' gate/ 6 bar like new, \$200. Electric fence wire (Powerwire), \$35. GE window unit air conditioner, \$100. 8' white commercial table, \$80. Baby lock serger sewing machine, \$250, 218-280-0011.

17 ft. Coleman canoe, \$300. Skate-board ramp and rail, \$75. New Under mount 16 gauge stainless steel sink, \$200, 218-850-4027.

New radiator core for Kenworth T-600 - T-800 high flow, \$800. Little green trailer, tall, tire, \$100. Rhino 48" brush mower, pull behind, 8 hp runs good, \$1,000. Also new used radiators, 8 ft ladder, 14' Jon boat. 218-395-5110.

Gehl #1710 Round Baler Canvass for MF swather, 218-261-0971.

Skid steer attachments, 5 & 6 ft HD Brush mowers on hand. Various grapples, pallet & hay forks, stump buckets, tree & post pullers, 701-261-3574.

Polaris Sportsman 500 6-wheeler, tilt box, tracks, skis, chains & snow blade \$3,500. O'Brien Wake Warrior for tubing, hardly used, \$75. Misc rods & reels by Daiwa and Abu Garcia Ambassador \$20 ea or \$100 for the lot, 218-329-0755 text/ lv message.

Sea Legs for a Pontoon. These are on a 20 Foot pontoon now. Would consider a trade for scissor lift trailer also, 701-361-3272.

Diamond D 12ft stock trailer tandem axle goose-neck, \$2,500. Heavy duty 3 pt post hole auger, \$450, rear tine cub cadet garden tiller, \$300, 218-850-4929.

Rebel 14ft Lund fishing boat 3 seats, carpet Lowrance fish finder, live-well, 2019 15 hp Yamaha 4 stroke Shorelander trailer, good shape, make offer, 406-471-4273.

3yr. old 13' Swim-spa/Hot Tub with lift covers. Combine fitness and relaxation year round. Swim, walk, or row against powerful jets or relax in front of the therapeutic jets, 218-841-2574.

5 ft. tall hand carved eagle 750, 5hp 2 stage 220 v single phase 80 gal horizontal tank air compressor, 34 ft. 1/2 in. gas line, 4 new Firestone tires 265/60R18, 1 Kumho 265/60R18 tire mounted on steel rim fits Jeep Grand Cherokee like new, 2 antique strollers \$75 ea, 701-866-4681.

Adult hen pheasants. Good flyer's, healthy & in a flyway, \$20 ea. Can deliver locally, 218-841-2688.

720 Bobcat skid-steer, 4 cycle, air cooled Wisconsin, runs good, \$6,000, 218-841-4829.

John Deere flat bed wagon 8 ton running gear 20 ft. 218-983-3448/ 218-204-0154/ 218-204-0298.

31-5"x12'tongue & grove pine boards four coats of clear finished applied, \$300, 218-850-1010, no text.

2 - 6.6 gal outboard motor fuel tank's w/ hose, \$25. 16' l-Beam 10" high, \$125. 2 Vector basement utility windows 18x32 w/ insulated glass w/ screen. Side hooks, bottom hinge lever, brand new, \$150, 701-799-8515.

White tail gate for 99 Chevy, \$75. Minnkota "Edge" front mount trolling motor w/ foot control, \$100. New 265-75R tire on 6 bolt wheel, \$50. Small green trailer \$100. Rhino -ruff-cut -48" pull-behind 'mower', \$1,000. "Total Chef" dehydrator, \$25, 218-935-5110, days.

Massey Ferguson self propelled swather w/ 18 ft header, looks good, been in shed for 35 yrs has flat tires, does not run, make offer- 655 Hydro, 218-935-5110.

1981 Honda CX500 needs battery & carb cleaned. 1466 Int. tractor low hrs runs good. 265 gal. fuel oil barrel. Old military generator motor. Make offer call evenings/lv mess 218-847-4017 4 push lawn mowers, fix-up/ parts, 584-4603.

## Wanted

Horse hay, Fence posts, Tractor, 3-point disc & plow, Snow sled, Duck boat, & Indian artifacts call 218-945-6646.

Panzer lawnmower or any other Lawn tractor from early 60s, 218-849-3069.

Older spear house (4'x6') in good condition, 218-849-5607.

Small outboard motor, 10- 20 horse, 4 stroke, reliable, 218-849-1700.

A young bred black Angus cow or heifer that has had 1 calf for next April/May, 584-4603.

## Wanted to Rent:

Goats for poison ivy clearing near Richwood, 952-228-7276 or email riobravo100@charter.net

## Our Ad Policy

- Email ads to . . . info@wildriceelectric.com
- Mail ads to . . . Wild Rice Electric Cooperative PO Box 438 Mahnomon, MN 56557

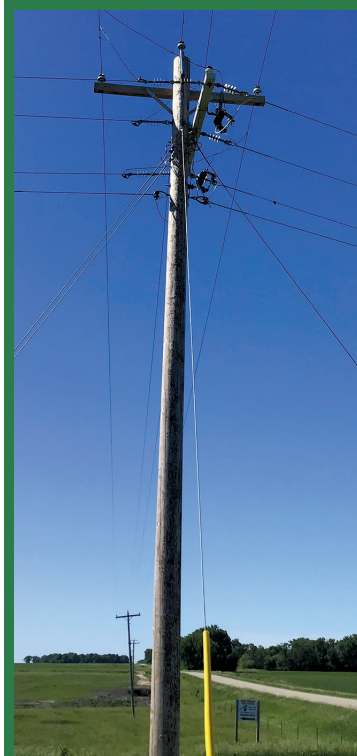
## HELP MANAGE OUR FIXED COSTS BY

# GOING PAPERLESS!

As a not-for-profit, we take the responsibility of managing the Cooperative's resources very seriously. We have systems in place to help us keep our fixed costs as low as possible. One way you can help us manage these fixed costs is by setting up your account for automatic bank draft payments.

If you're used to paying online, but use your credit card, automatic bank draft payments work in a similar way but eliminate costly fees for processing credit card payments. Automatic bank draft payments also eliminate the need to write checks, pay for postage, or worry about getting your payment in the mail on time. It's all taken care of, and there's never a late payment!

Visit <https://www.wildriceelectric.com/billing-information/automatic-payment>



## Wild Rice Electric has three remaining work plan projects for this summer.

- (Left) Converting seven miles of old three phase overhead to three phase underground starting one mile north of Hitterdal substation and ending six miles east of Ulen on County Road 16.
- Converting two miles of single-phase overhead line to three phase underground south of Solem Church in Eglon Township.
- Adding a new underground feeder north out of Hitterdal substation for one mile.

# COLD WEATHER RULE

## 216B.097 COLD WEATHER RULE: COOPERATIVE OR MUNICIPAL UTILITY

Subdivision 1. **Application; notice to residential customer.** (a) A municipal utility or a cooperative electric association must not disconnect and must reconnect the utility service of a residential customer during the period between October 1 and April 30 if the disconnection affects the primary heat source for the residential unit and all the following conditions are met:

- (1) The household income of the customer is at or below 50 percent of the state median household income. A municipal utility or cooperative electric association utility may (i) verify income on forms it provides or (ii) obtain verification of income from the local energy assistance provider. A customer is deemed to meet the income requirements of this clause if the customer receives any form of public assistance, including energy assistance, that uses an income eligibility threshold set at or below 50 percent of the state median household income.
- (2) A customer enters into and makes reasonably timely payments under a payment agreement that considers that financial resources of the household.
- (3) A customer receives referrals to energy assistance, weatherization, conservation, or other programs likely to reduce the customer's energy bills.
- (b) A municipal utility or cooperative electric association must, between August 15 and October 1 each year, notify all residential customers of the provisions of this section.

Subdivision 2. **Notice to residential customer facing disconnection.**

- (a) Before disconnecting service to a residential customer during the period between October 1 and April 30, a municipal utility or cooperative electric association must provide the following information to a customer:
- (1) A notice of proposed disconnection;
  - (2) A statement explaining the customer's rights and responsibilities;
  - (3) A list of local energy assistance providers;
  - (4) Forms on which to declare inability to pay; and
  - (5) A statement explaining available time payment plans and other opportunities to secure continue utility service.
- (b) At the same time that notice is given under paragraph (a), the utility must also give written or electronic notice of the proposed disconnection to the local energy

assistance provider and the department.

Subdivision 3. **Restriction if disconnection necessary**

- (a) If a residential customer must be involuntarily disconnected remotely using advanced metering infrastructure or physically at the property being disconnected between October 1 and April 30 for failure to comply with subdivision 1, the disconnection must not occur:
- (1) On a Friday, unless the customer declines to enter into a payment agreement offered that day in person or via personal contact by telephone by a municipal utility or cooperative electric association;
  - (2) On a weekend, holiday or day before a holiday;
  - (3) When utility offices are closed; or
  - (4) After the close of business on a day when disconnection is permitted, unless a field representative of a municipal utility or cooperative electric association who is authorized to enter into a payment agreement, accept payment, and continue service, offers a payment agreement to the customer.

Further, the disconnection must not occur until at least 30 days after the notice required in subdivision 2 has been mailed to the customer or 15 days after the notice has been personally delivered to the customer.

- (b) The customer must not be disconnected until the utility attempts to confirm whether the residential unit is actually occupied which the utility may accomplish by:
- (1) Visiting the residential unit; or
  - (2) Examining energy usage data obtained through advanced metering infrastructure to determine whether there is energy usage over at least a 24-hour period that indicates occupancy
- (c) A utility may not disconnect a residential customer who is compliance with section 216B.098 subdivision 5.
- (d) If, prior to disconnection, a customer appeals a notice of involuntary disconnection, as provided by the utility's established appeal procedure, the utility must not disconnect until the appeal is resolved.
- (e) For the purposes of this section, "advanced metering infrastructure" means an integrated system of smart meters, communication networks and data management systems that enables two-way communication between a utility and its customers.

# ENERGY ASSISTANCE PROGRAM

The Energy Assistance Program (EAP) is a federally funded program through the U.S. Department of Health and Human Services, which helps low-income renters and homeowners pay for home heating costs and furnace repairs. Household income must be at or below the state median income (\$62,822 for a family of four) to qualify for benefits. Applications must be received or postmarked by May 31, 2024.

To learn more about the EAP program or to apply for assistance:

- Visit the Minnesota Department of Commerce Energy Assistance website, <https://mn.gov/commerce/consumers/consumer-assistance/energy-assistance/>, for more details and to access the application portal.
- Contact your county EAP service provider for additional information and assistance.

**Mahube Community Council**  
PO Box 76  
Mahnomen, MN 56557  
218-935-5022

**West Central Minnesota Communities Action, Inc.**  
715 11th St N Suite100  
Moorhead, MN 56560  
800-492-4805/ 218-685-4486

**Mahube Community Council**  
PO Box 747  
Detroit Lakes, MN 56502  
218-847-1385

**Inter County Community Council**  
PO Box 189  
Oklee, MN 56742  
218-796-5144/ 888-778-4008

**Energy Assistance Program**  
3303 US Hwy 59/ PO Box 418  
White Earth, MN 56591  
218-473-2711 or 888-458-1385

**Tri-Valley Opportunity Council**  
102 N Broadway/ PO Box 607  
Crookston, MN 56716  
218-281-5832/ 800-584-7020

Wild Rice Electric Cooperative exists because of you, and we are dedicated to the people and communities we serve. If you are having difficulty paying your electric bill and do not qualify for either of these programs, please contact us immediately to work out a mutually agreeable payment plan.

## Minnesota Sales Tax Exemption for Electric Heating

Electricity sold for residential use is not taxable for the billing months of November through April when sold to members who use it as their primary source of residential heat. If more than one type of heat is used, the electricity is not taxable if it is the primary source of heat (supplies more heat than any other source for the largest period of time during the heating season).

If the primary source of residential heat is electricity and there is only one meter for that utility then all electricity measured through that meter is not taxable during the winter heating months. Reference MN Sales Tax Fact Sheet 157. Questions about this law can be directed to the Corporate & Sales Tax Division at 651-296-6181 or by visiting their Website at [www.taxes.state.mn.us](http://www.taxes.state.mn.us).

My signature below certifies that I meet all requirements outlined on MN Sales Tax Fact Sheet 157 and I am exempt from Minnesota Sales Tax on my electric bill.

If I fail to meet these requirements in the future, I understand that is my responsibility to notify Wild Rice Electric of such change to avoid being in violation of State Law.

Name

Account number

Consumers' Signature

Date





PERIODICAL

### **Rural Delight** (ISSN 0194 505X)

Published monthly by Wild Rice Electric Cooperative, Inc.,  
P.O. Box 438, Mahanomen, MN 56557, in the interests of its members and others.  
Periodical postage paid at Mahanomen and additional mailing offices. USPS 468-810.  
POSTMASTER: Please send address changes, Form 3579 to:  
Wild Rice Electric Cooperative, Inc.,  
P.O. Box 438, Mahanomen, MN 56557-0438.  
Subscription rates: Members, \$1/year; Non-members, \$2/year.  
Phone: 218-935-2517.

### **Wild Rice Electric Cooperative, Inc.**

**Office Hours:** 8:00 a.m.- 4:30 p.m.  
Monday- Friday

**Telephone:** 800-244-5709 or to  
make a payment 833-250-4481

**Website:** [wildriceelectric.com](http://wildriceelectric.com)

**Email:** [info@wildriceelectric.com](mailto:info@wildriceelectric.com)

Also download the Wild Rice Electric app for  
free at your App Store of choice, to monitor  
usage, pay your bill and more.

#### **Officers and Directors:**

**Chair** ..... Jim Kaiser, District 3  
**Vice Chair** ..... Larry Sollie, District 1  
**Secretary** .. Mark Habedank, District 2  
**Treasurer** ..... Dave Hamre, District 1

**District 1:** Jeff Nornes

**District 2:** Greg LaVoy & Roger Winter

**District 3:** Randy Bjornson &  
Russ Okeson

**President & CEO** ..... Mike Wade

*This Institution is an equal opportunity  
provider and employer.*

## **Lineworkers in the ~~field~~ WATER**



**Lineworkers, Seth, Gary and Phil,** are bringing wire across Elbow Lake. A new replacement is set in place for reliability and helping balance load to members around Elbow Lake.

**WILD RICE ELECTRIC COOPERATIVE INC. MISSION STATEMENT**  
*Energizing our members' future.*