

UbiquiSense Occupancy Report  
START WEEK 18, ENDING WEEK 45  
22<sup>ND</sup> OF APRIL TO 1<sup>ST</sup> OF NOVEMBER

## BUILDING A

# Scope



11 Meeting Rooms

214 m<sup>2</sup>

104 Seats

2 Breakout Spaces

**This report is based on sensor data for six months during 2019.**

In this period we have monitored how space is being utilised by users of building A.

**We measure the following:**

- Time Occupancy
- Time Utilisation Efficiency
- Space Occupancy
- Conditional Space Utilisation

Based on these 4 parameters, we calculate the efficiency of the building, and by looking at the individual rooms, we will give our recommendation on how to optimise building performance.

## BUILDING A

# Our method

UbiqiSense smart sensor solution, is a people counting sensor used for understanding and optimising space.

The following report is based on occupancy data collected by UbiqiSense sensors, measuring frequency and density in the use of meeting rooms and breakout spaces in Building A.

We have selected a time span of 6 months, which is sufficient to get a deep dive into the utilisation of the selected spaces. During the period, we have collected 1-2 data points per second, and aggregated the data to 15 minutes intervals for optimal accuracy.

The time of monitoring is Monday to Friday from 7am to 5pm. We have filtered out bank holidays and public vacations in weeks 29, 30 and 31 as well as week 42, as those periods are not representative for the overall utilisation of the perimeters.



### TIME OCCUPANCY

Time Occupancy measures how often a Location is in use.



### TIME UTILISATION EFFICIENCY

Measures utilization relative to the Locations' optimal occupation time



### SPACE OCCUPANCY

Space Occupancy measures utilization, factoring in the number of people relative to capacity



### CONDITIONAL SPACE UTILISATION

Space occupancy is measured only when Location is occupied.

## BUILDING A

# Overall performance

Building A is an open office building, with...

**11** meeting rooms

**2** breakout spaces and

**2** private offices monitored.

For the purpose of this report, we focused on meeting rooms only, with a quick glance into breakout spaces.

All in all, the building has an excess of meeting space capacity, with peak occupancy levels hardly reaching **40%** and an efficiency score of **3.8** which is below average.

Hence, the building has good potential for additional use cases such as incorporating meetings from tenants of other building or setting up workshops, war rooms or other, maybe even ping pong / foosball tables, depending on the needs and wishes of the occupants.



Time occupancy

**26.5%**



Time utilisation efficiency

**45.1%**



Space occupancy

**8.8%**



Conditional space utilisation

**31.1%**

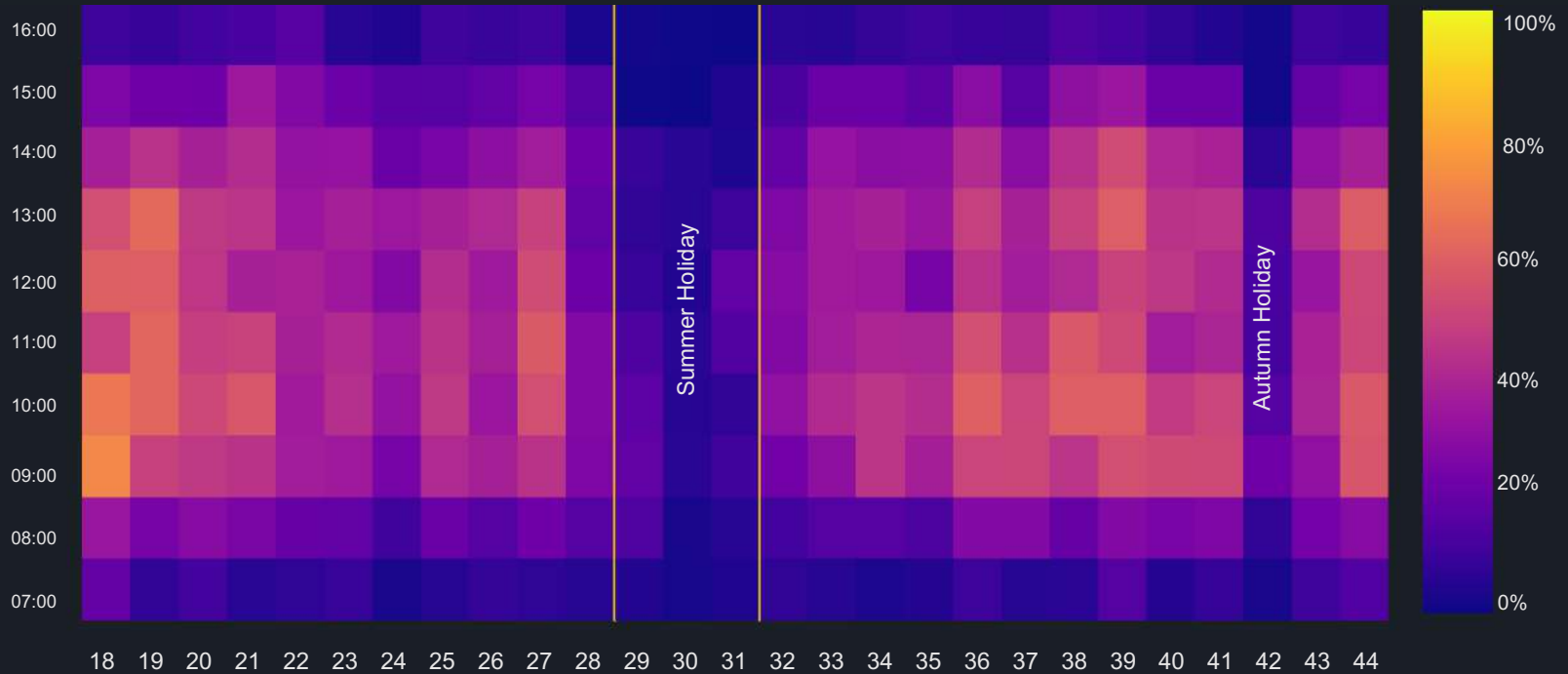


UBI-Efficiency score

**3851**

## OVERALL PERFORMANCE: BUILDING A

# Weekly Time Occupancy Heatmap












# BUILDING ROOM A: MEETING ROOM CATEGORIES

## Whole Period

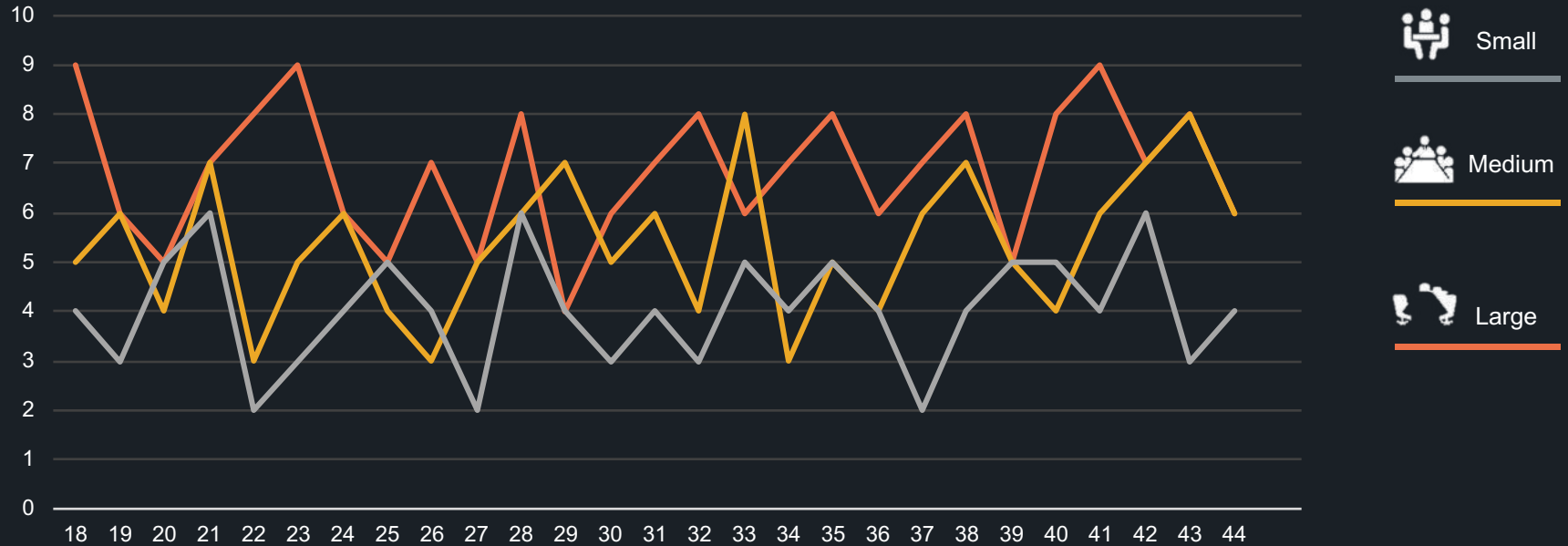


Building	409
Rooms	11
Seats	76
Total Size	156 m2
Time Occupied	28.7%
Space Occupied	10.3%
Hours Occupied	3.851
Hours Idle	9.567

Category	#	 Room size	 Time occupancy	 Time utilization efficiency	 Space occupancy	 Conditional space utilization	 Hours occupied
	Amount						
 Small	1	1-5	17.0%	28.3%	8.0%	46.6%	219
 Medium	8	6-9	23.7%	39.5%	7.5%	31.6%	2450
 Large	2	10-12	45.4%	75.7%	15.4%	34.0%	1182

## MEETING ROOMS: CATEGORIES

# UBI-Efficiency Score Weekly Averages

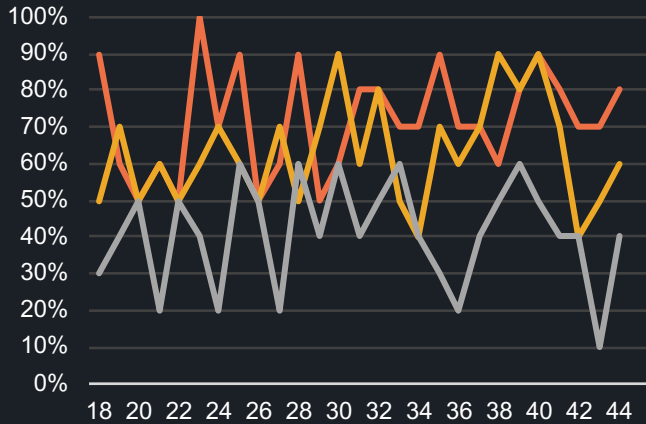


## MEETING ROOMS: CATEGORIES

# Whole Period / Weekly Averages



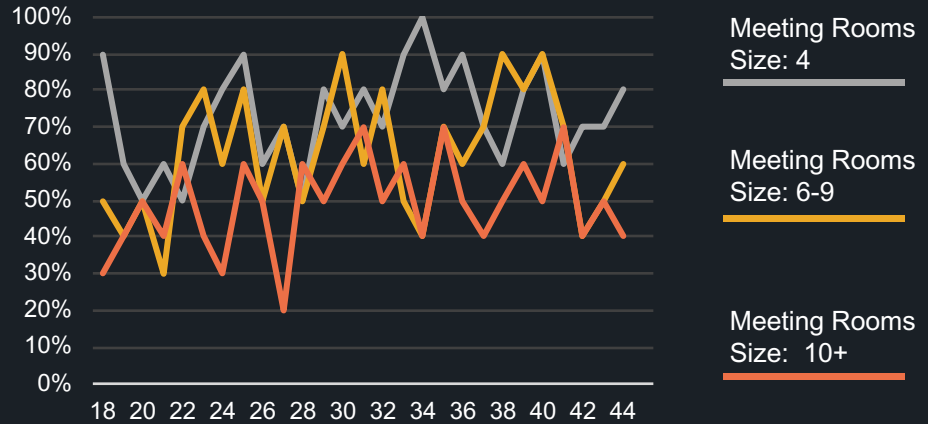
### Time Utilisation Efficiency



Large meeting rooms on 1<sup>st</sup> floor are generally popular and well used

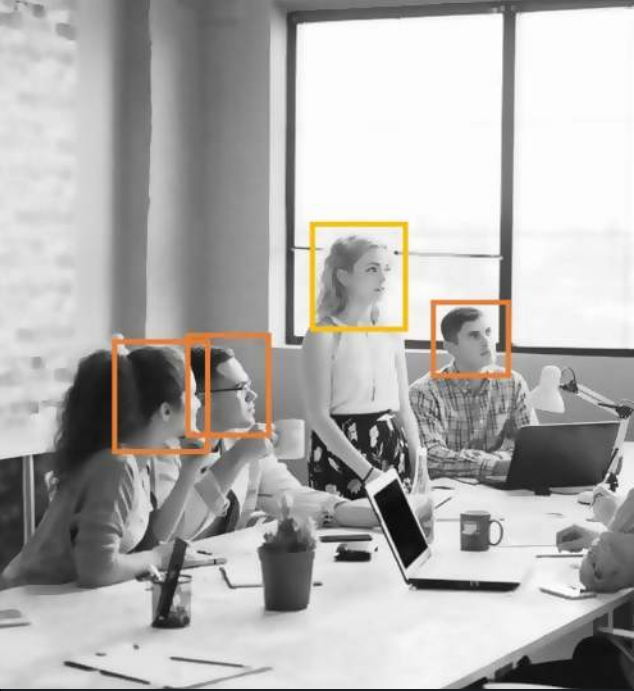


### Conditional Space Utilisation



**BUT:** those large meeting rooms are hosting few people when used





Do you have questions or want to find out more about our smart occupancy sensor solution?

Reach out to [sales@ubiqisense.com](mailto:sales@ubiqisense.com) today!



Pilestræde 40B,  
1112 Copenhagen K, Denmark



[www.ubiqisense.com](http://www.ubiqisense.com)



[sales@ubiqisense.com](mailto:sales@ubiqisense.com)