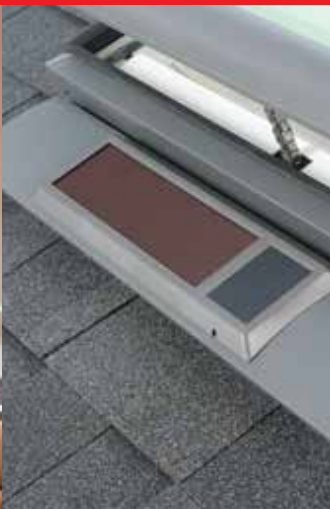


World-leading skylights and roof windows

Product information



**OPENABLE FLAT
ROOF SKYLIGHTS**



**SOLAR-POWERED
SKYLIGHTS**



**VELUX
ACTIVE**



**STREAMLINED
EXTERIOR**



**CodeMark
CERTIFIED**



**HAIL
TESTED**



**BUSHFIRE
BAL40**



**CYCLONE
TESTED**

Throughout the construction industry, VELUX is a by-word for quality, a reputation that has been painstakingly built up for more than 35 years in Australia and for over 75 years around the world.

Perfectly designed to withstand the world's harshest climatic conditions, all VELUX products are of the highest quality and will perform superbly for a lifetime of faultless service.



Take a look through this guide and judge for yourself. For range, quality, value, guarantees, delivery and service – VELUX is a world leader.

Guaranteed to last...

10 Year Warranty
on all skylights, roof windows and flashings.

3 Year Warranty
on accessories, including electric controls & blinds.



CodeMark® is a voluntary certification scheme owned by the Commonwealth of Australia that provides legally binding evidence of compliance to the Building Code of Australia. One certificate replaces dozens of technical papers.

Surpasses Australian tests for skylights

AS4285 SKYLIGHTS Cyclonic† & Non-Cyclonic	AS1288 OVERHEAD GLAZING Laminated inner pane	AS3959 BUSHFIRE* Attack Level 40
---	--	--

Window Energy Rating Scheme (WERS)

(MAXIMUM 5 ON WERS SUMMER RATING)



VELUX Skylights and Roof Windows are included in the National Energy Rating programme (AccuRate) as well as state run programmes such as Basix & FirstRate.

Building Code compliance

All VELUX Skylights/Roof Windows (except Sun Tunnels) are deemed non-combustible and thereby comply with NCC Boundary Separation requirements i.e. suitable for use within 900mm of a boundary for buildings of Class 1 & 10 (typical residential dwelling)*.

* CSIRO assessment report available on request. VELUX recommends consultation with relevant authority before work commences. Opening models assessed in closed position.

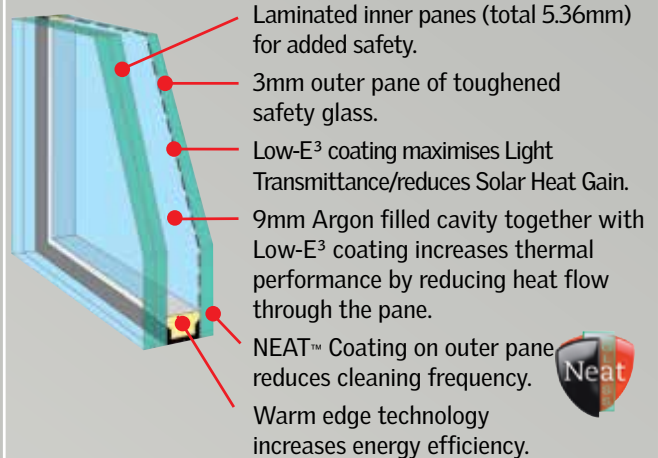
^ Skylight product range only. Custom-made flashing required. Tested in closed position, fire resistant mesh may be required for opening models. Rigid Sun Tunnel BAL29. Please consult your local council.

† Except GPL Roof Window and Sun Tunnel. VCS/VCM cyclone test not performed with screws provided, installation requires the use of #8 roofing screws.

Glazing

High Performance double glazing

Now standard across entire skylight range



Benefits:

- Radiant heat block: Complete window **approx 75%**
- UV Harmful rays block **approx 99%**
- Noise reduction factor **32 decibels**
- WERS rating **5 stars**
- Double layer of Low-E³ coating.
- 10 year warranty on insulated glass seal.
- Reduced cleaning frequency.

Australian Standard AS1288

Laminated glass (standard) must be used for skylights installed 3m or more above floor level.

NEAT™ Photocatalytic Coating

- Silicone Dioxide/Titanium Dioxide coating reacts with the sun's UV rays to decompose surface organic dirt before rinsing away with the next shower of rain, thereby reducing cleaning frequency.
- The coating also makes the glass surface smoother, so water disperses evenly, sheets off and evaporates quickly; thereby minimising water spotting on the pane.

GGL/GPL window pane tint (i.e. colouration) is slightly different to skylight window pane tint.

Measure & Quote

VELUX has recommended installers throughout the country that are trained to install VELUX skylights. Scan the QR code below and complete the online webform when you're ready to take the next step, and we'll arrange for a recommended installer in your area to provide a Measure & Quote.



Installers recommended by VELUX are independent contractors who have been trained in the installation of VELUX products but are not employed by VELUX Australia. VELUX cannot be held responsible for work carried out on your property by installers who are independent of VELUX Australia.

Pitched Roof Skylights

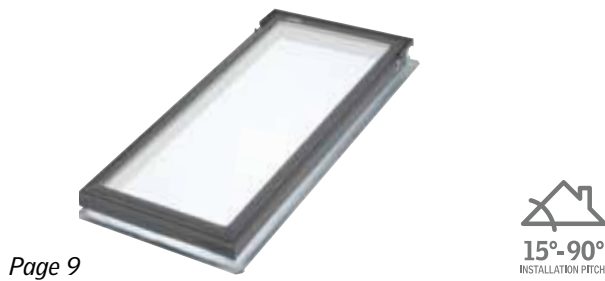
VSS Solar-powered



VS Manually operated



FS Fixed (non-opening)

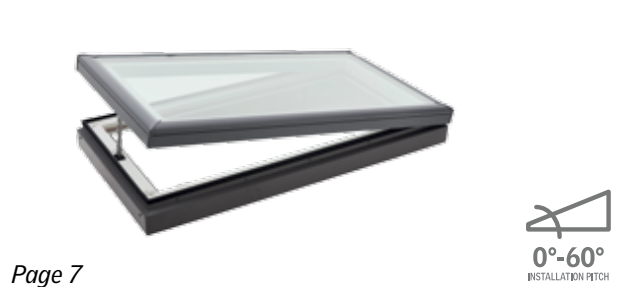


Flat Roof Skylights

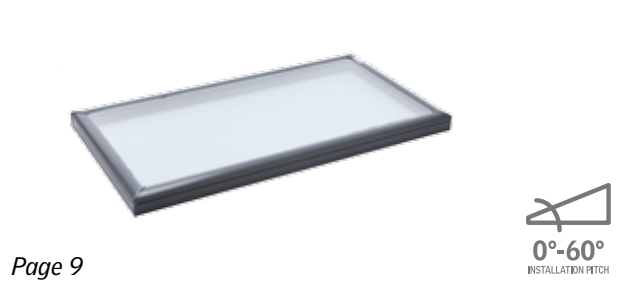
VCS Solar-powered



VCM Manually operated



FCM Fixed (non-opening)



Sun Tunnels and Roof Windows

TWR Rigid

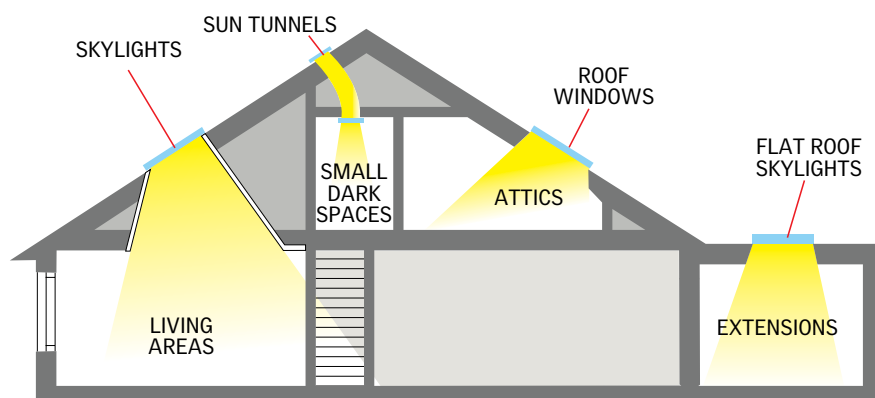


TWF Flexible



GGL

White
preprinted
finish



GPL

White
preprinted
finish



Automatic sensor-based ventilation*

Solar-powered Skylight

- Solar panel mounted below the skylight provides all the power needed to operate the skylight.
- Rain sensor automatically closes skylight when rain is detected.
- Battery power negates power surges and blackouts.
- Easy to install, no need for electrical wiring.

***Requires VELUX ACTIVE**
- sold separately (Page 5)



Pitched Roofs



15°-90°
INSTALLATION PITCH*

VSS

Solar-powered skylight

The ultimate skylight that provides abundant daylight and controllable ventilation. Features a solar panel that captures available daylight to recharge a highly efficient, concealed battery-powered operator and control system.

- Electrician not required to install.
- White painted interior timber frame and sash.
- Outer aluminium cappings (grey).
- Smooth profile sits lower in the roof, does not obstruct the roofline.
- Available in 10 sizes.
- Wall-mounted key pad.
- Rain sensor automatically closes the skylight when rain is detected.
- High Performance double glazing, with NEAT™ outer coating: reduces cleaning frequency.
- Includes removable insect screen.
- Complete with flashing for corrugated iron or tile roofs.



3 YEAR
WARRANTY
ON ELECTRICS

Technical Performance

U-value†	
Skylight	2.50
Glass only	1.93

Solar Heat Gain Co-efficient†

Skylight	0.21
Glass only	0.28

Heat block

Approx 80%

Bushfire^

BAL40

Hailstone Test±

VELUX Simulated Tests
ASTM E822-2009

WERS max 5 stars
(summer rating)

★★★★★

Australian Standards

AS4285 AS1288
AS3959^ AS1530.8.1††



Flat Roofs



0°-60°
INSTALLATION PITCH**

VCS

Solar-powered skylight

The ultimate flat roof skylight that provides abundant daylight and controllable ventilation. Features a solar panel that captures available daylight to recharge a highly efficient, concealed battery-powered operator and control system.

- Electrician not required to install.
- Maintenance Free – White PVC interior frame for a tough, hard wearing interior finish.
- Outer aluminium cappings (grey).
- Available in 7 sizes.
- Wall-mounted key pad.
- Rain sensor automatically closes the skylight when rain is detected.
- High Performance double glazing, with NEAT™ outer coating: reduces cleaning frequency.
- Includes removable insect screen.
- Requires custom-made flashing (not supplied by VELUX).



3 YEAR
WARRANTY
ON ELECTRICS

Technical Performance

U-value†	
Skylight	2.9‡
Glass only	1.93

Solar Heat Gain Co-efficient†

Skylight	0.24
Glass only	0.28

Heat block

Approx 75%

Bushfire^

BAL40

Hailstone Test±

VELUX Simulated Tests
ASTM E822-2009

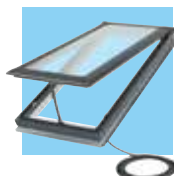
WERS max 5 stars
(summer rating)

★★★★★

Australian Standards

AS4285# AS1288
AS3959^ AS1530.8.1††

*See installation preparation guide on page 9.



Also available

VSE

Electrically operated



- Choice of 9 sizes.
- 2 metre lead (supplied) plugs into power point.
- White painted interior timber frame and sash.
- Insect screen, rain sensor and wall-mounted keypad included.

Visit www.velux.com.au for more details.

VELUX ACTIVE indoor climate control (sold separately)

- **Sensor-based ventilation:** Smart sensors continuously monitor temperature, humidity and CO₂ levels and open or close your skylights accordingly.
- **Stay in control:** Use the app to operate your skylights and blinds using your smartphone.



Solar Powered Blinds

See page 12

Honeycomb – FSCH (for VSS/VSE), FSCC (for VCS)
Blockout – DSH (for VSS/VSE)

- All blinds are available in white.
- Sold separately.
- Unique installation system allows easy installation.

* For roofs below 15° pitch, VSS/VSE skylights need to be raised to 15° and custom flashed. VELUX can assist with technical advice and drawings. (NB: build-up not recommended in Bushfire areas.)

** VELUX recommends VCS is installed with a slight pitch (e.g. 3°-5°) to help reduce condensation build-up and water ponding on the glass.

† U-value (W/m²K) and SHGC data based on AFRC simulations, (complete skylight size; VSS/VSE: 1140mm x 1180mm, VCS: 1275mm x 1275mm).

Cyclone test not performed with screws provided, installation requires #8 roofing screws.

± Hailstone test not performed on solar panel. Solar panel not attached during test.

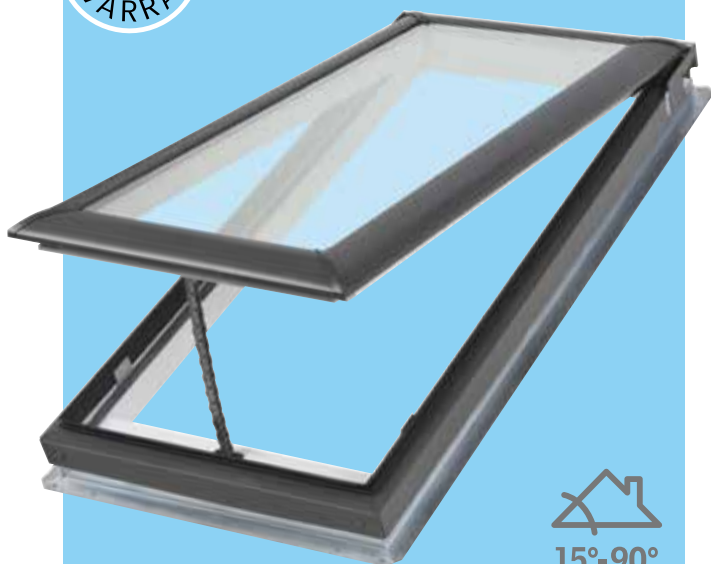
^ Skylight only. Custom-made flashing required. Skylight tested in closed position (VCS BAL assessed – based on VSS results), metal flywire mesh protection required for opening apertures (consult local council). Roof pitch; VSS: 18°-75°, VCS: 0°-60°. †† Assessed in closed position.



Healthy daylight, fresh air
and sky views



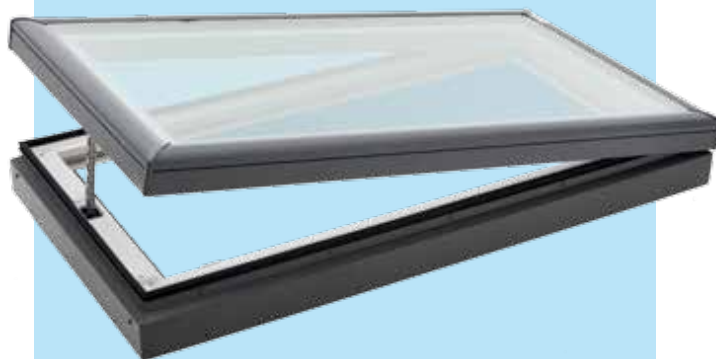
Pitched Roofs



15°-90°
INSTALLATION PITCH**



Flat Roofs



0°-60°
INSTALLATION PITCH**

VS

Manually operated

Provides the comfort and energy savings of free daylight and natural ventilation.

- White painted interior timber frame and sash.
- Outer aluminium cappings (grey).
- Smooth profile sits lower in the roof, does not obstruct the roofline.
- Available in 10 sizes.
- High Performance double glazing as standard; with NEAT™ outer coating: reduces cleaning frequency.
- Includes removable insect screen.
- Complete with flashing for corrugated iron or tile roofs.
- Operated by extendable rod (or by winder handle for in-reach).



Technical Performance	
U-value†	
Skylight	2.50
Glass only	1.93
Solar Heat Gain Co-efficient†	
Skylight	0.21
Glass only	0.28
Heat block	
Approx	80%
Bushfire^	
BAL40	
Hailstone Test	
VELUX Simulated Tests	ASTM E822-2009
WERS max 5 stars (summer rating)	
★★★★★	
Australian Standards	
AS4285 AS1288	
AS3959^ AS1530.8.1††	

VCM

Manually operated

Cost effective solution for natural ventilation in flat roofs.

- Maintenance free – White PVC interior frame for a tough interior finish.
- Outer aluminium cappings (grey).
- Available in 6 sizes.
- High Performance double glazing as standard; with NEAT™ outer coating: reduces cleaning frequency.
- Includes removable insect screen.
- Requires custom-made flashing (not supplied by VELUX).
- Operated by extendable rod (or by winder handle for in-reach).



Technical Performance	
U-value†	
Skylight	2.9‡
Glass only	1.93
Solar Heat Gain Co-efficient†	
Skylight	0.24
Glass only	0.28
Heat block	
Approx	75%
Bushfire^	
BAL40	
Hailstone Test	
VELUX Simulated Tests	ASTM E822-2009
WERS max 5 stars (summer rating)	
★★★★★	
Australian Standards	
AS4285# AS1288	
AS3959^ AS1530.8.1††	

*See installation preparation guide on page 9.

Blinds for VS

See page 12

Solar-Powered Honeycomb – FSCH Solar-Powered Blockout – DSH

Includes wireless, wall-mounted keypad



- All blinds are available in white. • Sold separately.
- Unique installation system allows easy installation.

Manual control options VS (sold separately)

- Winder handle for operating within-reach.
- Telescopic rod control for out-of-reach situations. (145cm in length, extendable up to 285cm.)



ZZZ 201

ZCT 300

- Short control rod. 60cm long. ZOZ 032

Blinds for VCM

See page 12

Solar-Powered Honeycomb – FSCH

Includes wireless, wall-mounted keypad.



- All blinds are available in white. • Sold separately.
- Unique installation system allows easy installation.

Manual control options VCM (sold separately)

- Winder handle for operating within-reach.
- Telescopic rod control for out-of-reach situations. (145cm in length, extendable up to 285cm.)



ZZZ 212

ZCT 300

- Short control rod. 60cm long. ZOZ 032

* For roofs below 15° pitch, VS needs to be raised to 15° and custom flashed. VELUX can assist with technical advice and drawings. (NB: build-up not recommended in Bushfire areas.)

** VELUX recommends VCM is installed with a slight pitch (e.g. 3°-5°) to help reduce condensation build-up and water ponding on the glass.

† U-value (W/m²K) and SHGC data based on AFRC simulations, (complete skylight size; VS: 1140mm x 1180mm, VCM: 1275mm x 1275mm).

VCM Cyclone test not performed with screws provided, installation requires #8 roofing screws. †† Assessed in closed position.

^ Custom-made flashing required. Skylight tested in closed position, metal flywire mesh protection required for opening apertures (consult local council). Roof pitch; VS: 18°-75°, VCM: 0°-60°. NB: NCC Vol 1 & 2 regulations (Prevention of Falls from Windows – Balustrades & Barriers); contact VELUX for information relating to restrictor devices for within-reach opening skylights.

Outstanding daylight provision

where extra ventilation is not required

FCM skylights: Versatile double-glazed alternative to acrylic domes.



Old acrylic domes can be easily damaged.

FCM SKYLIGHTS ARE IDEAL REPLACEMENTS** FOR ACRYLIC DOMES
11 sizes available to replace common acrylic dome sizes.

In simulated tests* VELUX skylights withstood hailstones, up to the size of cricket balls, launched at speeds experienced during heavy storms.

** Custom-made collar adaptor (not supplied) required to fit.

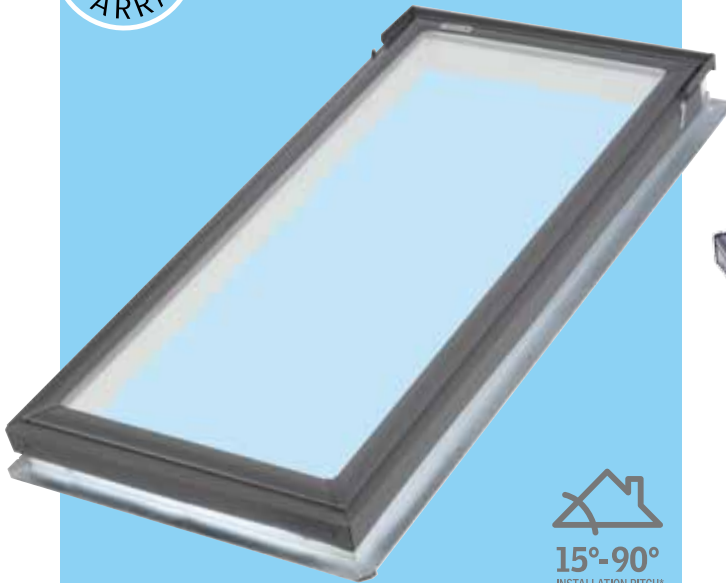


See Hail Storm case study.
www.velux.com.au

*ASTM E822-2009 standard practice for determining resistance of Solar Collector Covers to Hail impact with propelled ice balls.



Pitched Roofs



FS

Fixed (non opening)

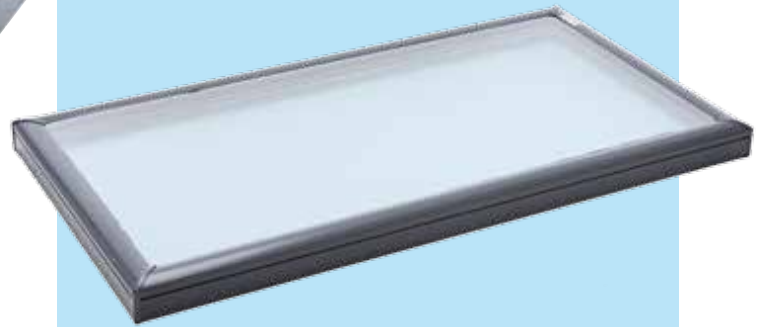
Cost effective for creating light-filled rooms where adequate ventilation already exists. Energy efficient glazing and the use of blinds ensure heat transference is minimised.

- White painted interior timber frame.
- Outer aluminium cappings (grey).
- Complete with flashing for corrugated iron or tile roofs.
- High Performance double glazing as standard; with NEAT™ outer coating: reduces cleaning frequency.
- Smooth profile sits lower in the roof, does not obstruct the roofline.
- Available in 10 sizes.

Technical Performance	
U-value†	
Skylight	2.60
Glass only	1.93
Solar Heat Gain Co-efficient†	
Skylight	0.24
Glass only	0.28
Heat block	
Approx 75%	
Bushfire^	
BAL40	
Hailstone Test	
VELUX Simulated Tests ASTM E822-2009	
WERS max 5 stars (summer rating)	
★★★★★	
Australian Standards	
AS4285 AS1288	
AS3959^ AS1530.8.1	



Flat Roofs



FCM

Fixed (non opening)

The brilliantly simple FCM flat roof skylight incorporates the VELUX High Performance double glazed, laminated unit and an all-metal exterior frame.

- Unlike acrylic or polycarbonate – laminated glass will not fade nor discolour over time.
- The smooth exterior gives a lower profile on the roof.
- High Performance double glazing as standard; with NEAT™ outer coating: reduces cleaning frequency.
- Approx 99% UV Block.
- Available in 11 sizes.
- Maintenance-free anodized heavy-gauge aluminium frame.
- Requires custom-made flashing (not supplied by VELUX).
- Versatile positioning††: most sizes can be used in portrait, landscape or even "diamond shape" orientation.

Technical Performance	
U-value†	
Skylight	2.9‡
Glass only	1.93
Solar Heat Gain Co-efficient†	
Skylight	0.28
Glass only	0.28
Heat block	
Approx 70%	
Bushfire^	
BAL40	
Hailstone Test	
VELUX Simulated Tests ASTM E822-2009	
WERS max 5 stars (summer rating)	
★★★★★	
Australian Standards	
AS4285 AS1288	
AS3959^ AS1530.8.1	



Blinds for FS

See page 12

Manual Honeycomb – FHCD

requires ZXT 200 rod control for out-of-reach.



Solar-powered Honeycomb – FSCD

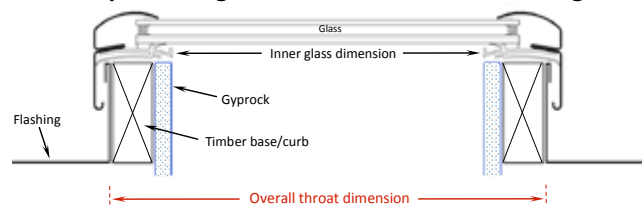
Solar-powered Blockout – DSD

Includes wireless, wall-mounted keypad.



- All blinds are available in white.
- Sold separately.
- Unique installation system allows easy installation.

Preparation guide for custom-made flashing



Note: If timber hob is greater than 38mm the Gyprock will encroach on the glazing area.

‡Skylight must be installed with timber hob and Gyprock, as shown (typical installation), to achieve 2.9 U-value rating.

* For roofs below 15° pitch, FS needs to be raised to 15° and custom flashed. VELUX can assist with technical advice and drawings. (NB: build-up not recommended in Bushfire areas.)

** VELUX recommends FCM is installed with a slight pitch (e.g. 3°-5°) to help reduce condensation build-up and water ponding on the glass.

† U-value (W/m²K) and SHGC data based on AFRC simulations, (complete skylight size; FS: 1140mm x 1180mm, FCM: 1275mm x 1275mm).

^ Skylight only. Custom-made flashing required. Roof pitch; FS: 18°-75°, FCM: 0°-60°.

†† FCM 2270 not recommended for "landscape" orientation.

NB: NT DTCM for FCM 3446 was still pending at time of print.



For Attic Conversions



for within-reach only



GGL



Centre-Pivot roof window

Beautifully engineered for a lifetime of use, the GGL is ideal for within-reach attic situations.

- A short pull on the top control bar allows filtered background ventilation even while the window remains shut.
- A second pull on the control bar allows the window to rotate for maximum ventilation – and up to 180° for cleaning the outer pane from inside the room.
- Quality white painted pine sash & frame.
- Complete with flashing for corrugated iron or tile roofs.
- Available in 5 sizes.
- Laminated double glazing as standard.

Technical Performance	
U-value†	
Roof Window	1.30
Glass only	1.00
Solar Heat Gain Co-efficient†	
Skylight	0.31
Glass only	0.30
Heat block	
Approx	70%
UV Harmful Rays Block	
Approx	95%
WERS max 5 stars (summer rating)	
★★★★★	
Australian Standards	
AS4285	AS1288



For Attic Conversions



for within-reach only



GPL



Dual action roof window

Developed for use in attics with shallower pitched roofs to maximise roof top views. For within-reach situations only.

- Opens in two ways: the bottom handle allows for top-hung opening; a short pull on the top control bar allows filtered background ventilation even while the window remains shut.
- A second pull on the control bar allows the window to rotate for maximum ventilation – and up to 180° for cleaning the outer pane from inside the room.
- Quality white painted pine sash & frame.
- Complete with flashing for corrugated iron or tile roofs.
- Available in 5 sizes.
- Laminated double glazing as standard.
- Insect screen available as extra.

Technical Performance	
U-value†	
Roof Window	1.30
Glass only	1.00
Solar Heat Gain Co-efficient†	
Skylight	0.31
Glass only	0.30
Heat block	
Approx	70%
UV Harmful Rays Block	
Approx	95%
WERS max 5 stars (summer rating)	
★★★★★	
Australian Standards	
AS4285‡	AS1288

Blinds for GGL/GPL

See page 12

Manual Honeycomb – FHC Manual Blockout – DKL

- All blinds available in white • Unique installation system allows easy installation • Sold separately

NB: NEW VELUX blinds and flashings do not fit older Roof Windows. Contact VELUX to check availability of suitable blinds and flashings.

Opening Restrictors

NCC Vol 1 & 2 regulations (Prevention of Falls from Windows – Balustrades & Barriers): contact VELUX for information relating to restrictor devices for within-reach opening roof windows.

* For roofs below 15° pitch, roof windows need to be raised to 15° and custom flashed. VELUX can assist with technical advice and drawings.

† U-value (W/m²K) and SHGC calculated according to EN 14351-1:2006 + A2:2016 (window size 1140mm x 1400mm).

‡ Except Cyclonic.



(TWR pictured)



Sun Tunnels

Time-saving design



The VELUX Sun Tunnel has been designed to make installation quick and easy. Tube assembly is simple so little time is spent in the roof cavity.

The VELUX rigid (TWR) and flexible (TWF) Sun Tunnels provide installation flexibility. Rigid tunnels are most suited to roof spaces with minimal obstructions. They have a highly reflective shaft to achieve maximum light output. Flexible tunnels can be used when obstructions in the roof cavity prevent the use of rigid Sun Tunnels.

VELUX Sun Tunnels for pitched roofs are designed to provide natural light into corridors, stairwells, powder rooms and cupboards; where installation of a VELUX Skylight is not possible.



AFTER

CORRIDORS, STAIRWELLS AND POWDER ROOMS

BEFORE

DAYLIGHT WHERE YOU WANT

Product features:

- Choice of highly reflective rigid or flexible tunnel (350mm diameter, lengths vary – details on page 15).
- 4mm toughened external glass.
- Dual-layered ceiling diffuser – spreads light over an area of up to 9m².
- Interior diffuser with 'Edge Glow', a clear ring on the diffuser's edge.
- Outer polyurethane cappings with integrated flashings for tiled/corrugated iron roofs.
- 'Stay clean' coating on glass exterior reduces cleaning frequency.
- Easier and quicker to install with VELUX Flexi Loc system. (TWR).

TWR
Technical Performance
Bushfire [^]
BAL29
Australian Standards
AS4285 (Except cyclonic)
AS3959 [^]

* Sun Tunnels are not suitable for roof pitches below 15°.

[^] Bushfire testing applicable to roof pitches 18°-60°. TWR only.



VELUX Blinds – effective light control



VELUX has a choice of blinds that provide different levels of light control. Tailor-made to fit perfectly to each size of skylight or roof window, they are easy to install and are supplied with white powder-coated side channels that allow the blind to be positioned at any point down the window.

Honeycomb blinds



A stylish and modern blind providing protection from heat and glare while providing a near complete blackout from light.

- Honeycomb structured material.
- Near-total light reduction.
- Reduce heat by approx 60%*.
- Available in white only.
- White rails and body.

Blockout blinds



Provide near complete blackout from light.

- Blind can be stopped at any position on the window.
- Near-total light reduction.
- Reduce heat by approx 40%*.
- Available in white only.
- White rails and body.

Easy to Install



Unique installation system makes installing our blinds a snap!

Installation is simple if window is within easy reach.

Due to shortage of parts, VELUX has had to temporarily suspend production & sales of blinds effective 1st October 2021.

Blind options

Blind to fit	Manual Honeycomb	Manual Blockout	Solar Powered Honeycomb**	Solar Powered Blockout**
FS	✓ [^]		✓	✓
VS			✓	✓
VSS/E			✓	✓
VCS			✓	
VCM			✓	
GGL	✓ [†]	✓		
GPL	✓ [†]	✓		

[^] Manual Blinds for Fixed Skylights require ZXT 200 rod control for out-of-reach situations.

**Solar powered blinds include wireless wall-mounted keypad (KLI 312).

Contact VELUX for information on blinds for FCM.

NB: NEW VELUX blinds do not fit older VELUX products. Contact VELUX to check availability of suitable blinds.

* Based on VELUX internal testing with 3076 model roof window.

NB: VELUX recommends retracting blinds during windy conditions if skylight is open.

Precision-made Flashings

Safe, effective rainwater drainage

The unique construction of VELUX flashings ensures safe drainage of rainwater coming from the roof above the window. Because the roofing material covers both top and sides, VELUX flashings are largely unobtrusive. To harmonise even further with the roofing material, they are available in standard grey aluminium.



EDW flashing – for metal or tile roofing. e.g. corrugate, tile

- Flashing for single skylight or roof window.
- Designed for roof pitches from 15° to 90°. For roofs below 15° create pitch-up and use custom made flashing (not supplied by VELUX).

VELUX Combination Flashing

for metal or tile roofing. e.g. corrugate, tile

Side by Side



Above – Below



Multi (4+)



VELUX skylights can be coupled together using 'combi' flashing in a variety of configurations to add truly inspiring features to any room of the house.

When installing skylights with 'combi' flashing, skylights must be installed with a strict 100mm space between each skylight.

See back page for information on 'combi' flashing product codes.

Contact VELUX when installing VSS above/below combination due to positioning of solar panel.

New VELUX flashings do not fit older VELUX products. Contact VELUX for information and pricing. RRP does not include combination flashing, contact VELUX for information regarding price of combination flashing.



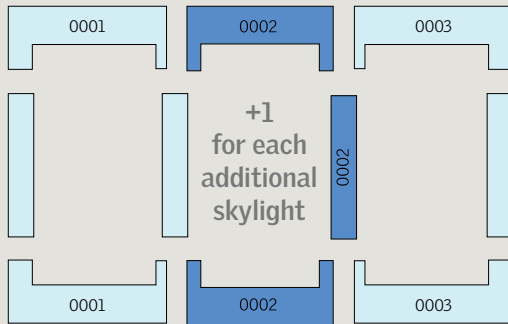
Custom flashing – All other situations

- Required for flat roof skylight installations.
- Useful for situations where VELUX flashing isn't suitable. Such as bushfire area, or when installing in a roof outside the installation pitch range (pitch adaptor), or when colour matching to roof is preferable.
- Not supplied by VELUX, contact VELUX for more information on custom flashing.

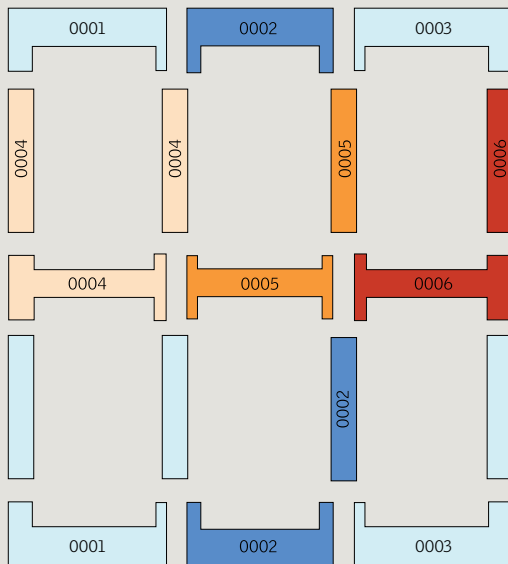
EKW Combination Flashing

Use when combining multiple pitched roof skylights* together

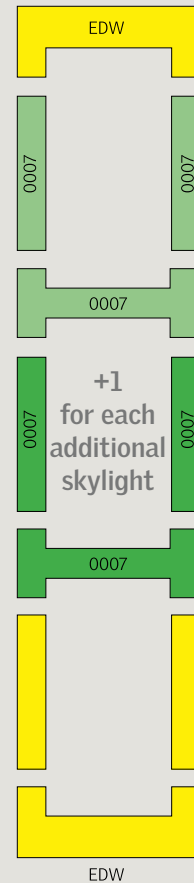
Side by Side



Multi (4+)



Above – Below



Select your skylight configuration and note the flashing components required.

Combi Product Code: EKW SIZE 000X

Example: 3 skylights side-by-side require 0001, 0002, 0003 components.

Codes become EKW M04 0001, EKW M04 0002, EKW M04 0003

* Not suitable for flat roof skylights.

Bringing light to life

VELUX Australia Pty Ltd
78 Henderson Road, Alexandria NSW 2015

Customer Services: Tel: 1300 859 856

Fax: (02) 9550 3289

E-mail: customer.service@velux.com.au

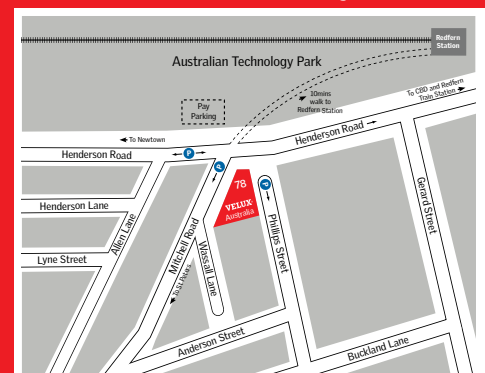
@veluxaustralia

www.velux.com.au

VELUX®

SYDNEY HEAD OFFICE & SHOWROOM

Showroom may be closed due to the COVID-19 situation.
Please call before visiting.



OPENING TIMES:

Sydney Head Office: 8am-5pm (Mon-Fri)

Showroom: 8.30am-4.30pm (Mon-Fri)