

AUSDECK
MARINE PLUS

For Superior Corrosion Resistance



ROOFING

GUTTERING

BEAMS

FLASHINGS



PRODUCT INFORMATION

Ausdeck Patios and Roofing is proud to introduce Marine Plus.

In locations close to water and pools, premature deterioration of steel structures may occur. Marine Plus has been designed specifically to withstand these harsh environments and offer a site specific warranty of up to 15 years.

Unlike any other, Marine Plus is a complete system, meaning protection and peace of mind across all components of your new outdoor living area.

For superior performance and unrivalled warranties in the harshest environmental conditions, choose Marine Plus by Ausdeck Patios and Roofing.

COLOUR RANGE

ROOF SHEET, GUTTERS AND FLASHINGS



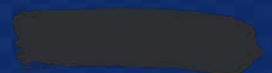
Off White



Slate Grey



Birch



Monolith



Armour Grey

BEAMS

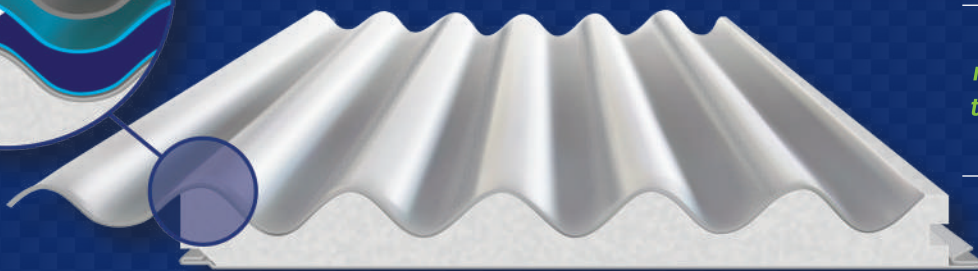


Off White

MARINE PLUS 5 LAYER FORMULA



1. Coloured Finish Coat
2. Primer
3. Pretreatment
4. Aluminium / Zinc / Magnesium Alloy Coating
5. Steel Substrate



*Ausdeck's insulated
roof panel illustrating
the 5 layer formula of
Marine Plus.*





About Us

The Ausdeck Group is a leader in insulated and single skin roofing products for Australia's harsh conditions.

Every Ausdeck patio is completely designed, engineered and manufactured 100% in-house to create the strongest structure on the market so you can enjoy larger living and entertaining areas, all year round.

Ausdeck Group is driven by innovation and system development to deliver industry leading products at competitive prices.

Meticulously controlling all in-house manufacturing from concept to delivery

ensures Ausdeck Group remains the market leader in the roofing and home improvement industries.

Ausdeck provides you with exceptional products and personalised service across Queensland, New South Wales and Victoria.

Personalise your designer patio with a range of innovative LED Tri-colour 12 volt, 8 watt downlights.

For more information, please contact your local Ausdeck distributor and experience the ultimate indoor area outdoors.

QUEENSLAND

16 Mica Street
Carole Park QLD 4300
P: 07 3718 8000
F: 07 3271 4600

NEW SOUTH WALES

3 Toohey Road
Wetherill Park NSW 2164
P: 02 9725 3522
F: 02 9756 2485