

# THE APSLEY Advocate

CIRCULATION 1810 P 02 6777 1111 F 02 6777 1112 wtc@walchatelecottage.com.au walchatelecottage.com.au

09 June 2021

## Old Stone Church to be fully restored



After many years of fundraising and grant applications, the Friends of the Old Stone Church were absolutely thrilled to receive news that they have been successful in obtaining funds to fully restore the beautiful old Church.

The Registrar of the Anglican Diocese of Armidale, Rev. Christopher Pears along with the Friends of the Old Stone Church were officially informed that their application for a matching grant from NSW Heritage to restore the Old Stone Church has been successful and \$98,500 awarded.

"We are all delighted that this Walcha building especially with the precious windows will be fully restored under the direction of the Diocesan Heritage Architect, Tony Deakin and we look forward to once again seeing it used as it was designed for the inspiration of worship to the glory of God," Nerida Hoy commented.

The Friends of the Old Stone Church thanked Rev Christopher Pears for his advice, St Andrew's Parish Council, as well as Heritage Architect, Tony Deakin.

"Thank you to the many people who contributed to the funds and encouraged the Friends of the Old Stone Church in their endeavours," Nerida commented. Donations were from many local Walcha individuals and organisations as well as from descendants and interested people throughout NSW and overseas.

"We also had great support from our local council and from our local State Member, Kevin Anderson.

Paperwork for the funding will be submitted by 30 June to NSW Heritage. The project is expected to start as soon as possible after that, with Heritage Architect, Antony Deakin being in charge of the restoration.

Photo: Jennifer Hill

# THE APSLEY Advocate

**LONG  
WEEKEND  
DEADLINE**



All advertising and editorial due  
midday Friday 11 June. Sport no later  
than 9.00am Tuesday 15 June.

**Nutrien**  
Boulton's

**Tuesday 15 June**

  
**AuctionsPlus**

**Wirribilla Farms**

600 Composite Ewes  
10 months old  
Scanned in Lamb

Miles Archdale 0428 660 326 • Simon Newton 0467 660 320 • Mat Larkings 0427 002 427



## OK EARTHMOVING

***Specialising in road construction & maintenance***

• Stickraking • Dam building • Erosion works



Bulldozers • Excavator • Tip-truck • Vibrating Roller

**PH 6777 7430 FAX 6777 7448**

**PETER O'KEEFE: 0429 944 821**

## CONTRACT BOOM SPRAYING AVAILABLE



**RICHARDSONS**  
HARDWARE & AGRICULTURE

Contact Dave at Richardsons Walcha on  
0427 012 400 or drop in to see the team.

## around the traps



By BRUCE RUTHERFORD

We are in for a proper blast of cold weather this week, with snow predicted above 1000 mtrs on Wednesday. Forecasts for snow rarely go much below about 1200 mtrs, but this week they are saying it could be as low as 900 mtrs, which will be a dump if that happens. Rain is forecast for Tamworth on Tuesday which will lead into the snow event. Fortunately there are not too many shorn sheep around at this time, nor are there too many lambs being born. So with luck we will get through this event largely unscathed. The longer term BOM forecast for the winter months is for above average temperatures and rainfall. I know there is a long way to go, but I wouldn't mind if they were right!

I have just spent the last hour trying to download some market reports, but the internet is playing up again and it is going to be slow. I can only wait so long, but just as I go to close the MLA pages, there is some progress and gradually I am able to see some reports. In the cattle market, Tamworth yarded just over 800 head this Monday, which is a small yarding but possibly influenced by the rain last week and more to come this week. You would think that with a long weekend approaching, we would see a spike in numbers at either end. Certainly not this end. The market was firm and dearer for cows after a couple of weeks where the cow market lacked direction. Wagga yarded less cattle as well, but there were 2250 yarded. It was a mixed quality yarding, with a lot more secondary types on offer. Feedlots performed strongly taking the bulk of the yarding and the momentum was generally positive as it has been over the last few weeks. The low numbers really highlight how few cattle are about, especially given we are at the beginning of winter rather than the end. The low numbers also are a little surprising given that next week there are no markets on Monday. It also highlights just how much confidence there is in the markets and the seasonal forecast. Otherwise, we would be seeing a lot more numbers in the system. The EYCI has increased slightly this week resting at 893 c/kg as I write.

In the lamb market numbers are still running, especially in the south. With much of Victoria and South Australia dry and looking for their autumn break, numbers are still flowing into regional yards. Quality has been affected by the dry conditions, but there are still plenty of grain fed lambs coming through. A glance at the numbers year on year and week on week, they are certainly elevated compared to this time last year. Numbers of lambs being processed are up about 25% when compared to the same time last year in both NSW and Victoria, which is a big number and does explain why we have not seen values firming as expected at this time. Bendigo yarded 19,000 sheep and lambs on Monday. It was a plainer quality yarding and lacked some depth in buyers with very restricted competition from restockers. The market was firm to dearer for best trade lambs and much cheaper for Merino lambs. Mutton also could not sustain the extreme values of the last couple of weeks. Dubbo also yarded close to 19,000 sheep and lambs on Monday with the results closely mirroring the Bendigo report. Best trade lambs slightly dearer, heavy lambs firm, Merino lambs considerably cheaper as was mutton. With the onset of next weeks holiday Tamworth numbers increased to 6,000 and the market was reported as largely firm and any price variations were down to quality. Again mutton was cheaper, but sheep carrying wool were slightly dearer.

I don't know how everyone else is finding our local NBN service but for some weeks now we have had appalling internet service at home. We don't have a land line, but many others don't either. In recent weeks the signal from the Telstra tower has been poor and the NBN service almost non-existent. I think the NBN has been a disaster, not only for the bush. I talk with people in the city and they tell similar tales of woe when it comes to their mobile phone and NBN services. The NBN should be forced by government to deliver what we are all paying for. If you don't get the speeds you are paying for, you should be compensated in some way. Our politicians should be held accountable for their promises regarding the NBN. It has been an absolute sham from the word go. I am told that Elon Musk is launching satellites all around the world that will deliver internet speeds we can only dream of. Bring it on!

Last week I made the comment that the Fanny Lumsden concert at the Yarrowitch Hall was part of a Government funded recovery program, which it was not! Mind you there have been plenty of similar programs, but in this case it was totally underwritten and funded by the Yarrowitch Community Group. A wonderful night, made even more so because it was their own event.



# Bank donation helps buy supplies for Willow Wing

Commonwealth Bank Walcha branch employees last week donated \$500 to Presbyterian Aged Care-Apsley Riverview Willow Wing as part of a nationwide community donation program.

Commonwealth Bank has again pledged to donate \$500,000 nationally, to recognise those organisations that make a difference to the communities in which they operate. Each Commonwealth Bank branch and customer-facing team has been allocated \$500 to donate to causes important to their local community.

Commonwealth Bank's Walcha branch team voted to support the great work of Willow Wing at the Presbyterian Aged Care.

"Many communities across Australia face ongoing challenges as a result of the coronavirus pandemic, so it's important for us to give back to local organisations who continue to do good work within our community. We are pleased to support the Willow Wing at the Presbyterian Aged Care," Anne Martin, Commonwealth Bank Walcha Branch Manager said.

"In particular, they provide so many different activities for our elderly residents of Walcha, so it's great to be able to support them in this great work."

Willow Wing will use the money to purchase items to do activities with the residents, which they were extremely grateful to receive as many



*Commonwealth Bank Manager, Anne Martin presents the \$500 cheque to Willow Wing staff and residents last week*

locals use the facility as a great way of staying in touch with others in the community, as well as providing a great day out for them.

At Commonwealth Bank, our people are committed to driving positive change within their communities to make a difference locally and for all Australians.

**Nutrien**  
Boulton's

**Stock and Property Watch**  
[www.landmarkharcourts.com.au](http://www.landmarkharcourts.com.au)

## Live in or invest



- Brick Veneer home with tile roof
- Three bedrooms all with built-ins.
- Polished timber floor in main living areas with wood fire heater.
- Modern kitchen with pantry, dishwasher and new gas stove.
- Bathroom has shower, corner spa bath with vanity. Separate toilet.
- Ample car space – New double carport and detached garage
- In a quiet street, all within walking distance to the CBD.
- Beautiful views overlooking the town.



**\$280,000**

## Oxley Drive beauty



- Fully renovated rendered and tile home is set high up on the hill in a quiet part of town.
- Open plan kitchen/dining/lounge, with gas heating. Kitchen consists of gas cooktop, electric oven, dishwasher and butlers pantry.
- Three bedrooms with built-ins, main with good sized walk-in robe and ensuite with extra large shower.
- Main bathroom has the ultimate bathtub, vanity, shower and toilet.
- Double carport and garden shed.
- Private entertainers delight on the southern side of the home.
- Large block with the potential to build a shed or landscape



**\$428,000**

3n Derby Street Walcha. 6777 2044 ■ Bruce Rutherford 0428 660 328 ■ Peta Carter 0407 350 781 ■ Dave Healey 0490 307 766

**PLAN  
YOUR  
FERTILISER!**

**PRE-PAY IN JUNE  
FOR SPRING DELIVERY**

**CONTACT PETER OR KATE FOR DETAILS**



6 Aberbaldie Rd Walcha. Phone 6777 2588. [www.wvs.com.au](http://www.wvs.com.au)

*\*Terms and conditions apply*



**Want Calving Ease?**

**Why not try a Wagyu Bull for Maiden Heifers!**

**Current F1 price Feedlot entry \$7/kg lwt**

**FULLBLOOD REGISTERED  
WAGYU BULLS FOR SALE**

**Vaccinated with Vibrovax, Pesti,  
7 in 1 and Semen Tested**

**Visit us at our Northern Beef Week Open Day  
Tuesday 22 June**

**Contact: David Woodley**

**'Mullabrook' Niangala**

**(02) 6769 2395**

**[www.rocalawagyu.com](http://www.rocalawagyu.com)**

**[daveandsukhee@rocala.com.au](mailto:daveandsukhee@rocala.com.au)**

**letters to the editor**



## **COVID vaccinations**

Regarding the vaccine rollout and comments from Hunter New England's Elizabeth Grist: "The more people that get vaccinated the better placed we are to protect ourselves and our loved ones from COVID-19."

Why do we have to travel when we have four doctors and a hospital in Walcha? We did flu shots here, why can't we do vaccinations? Do the math – around 3000 people need to travel to either Tamworth or Armidale twice. That's at least 600,000 kilometers of travel. How is that efficient?

**Kylie Gusset**

## **Huge ride across the State for charity**

Rod Everingham once again pedalled his way through Walcha, raising funds for his grandson's legacy – Pedal for Pat.

Rod is the brother of Walcha residents, Sher Hinton, Helen Henry and Julie Foster and was excited to reach town and see some familiar faces after a tough ride from Cameron Corner.

At the tender age of five Patrick Coombes lost his battle with an inoperable brain tumor six months after being diagnosed.

The Everingham family have been putting in the leg work to repay those charities who nurtured and sustained them in their darkest days, with their first ride being held in 2014.

At nearly 71 years of age, this will be the last and the longest ride for Rob and also the final Pedal for Pat Bike Ride.

This year's ride commenced in Cameron Corner, where the states of SA, NSW and QLD meet, and culminated in Wauchope, after cycling the long way round from Walcha.

Rob said while the ride is a huge undertaking, it is a labour of love. Proceeds from this year's ride will go to Bear Cottage and the Kid's Cancer Council.



*Rod pictured with his son in  
Walcha on the weekend*

**thumbs**



- 👉 To the owners of the block in Legge Street. It was heavily timbered, full of white ants. It is now the best block in town.
- 👉 To Dr Allen, and all the doctors and staff at Walcha General Practice on their efficiency in getting the COVID injections here so quickly and much before other areas have. Also, your drive-thru flu injection is another excellent idea.
- 👉 To Mark Berry. Your concerns are shared by many.
- 👉 To old fruit and vegetables in the supermarkets.

**Contributions will be received in person, by phone or email and must include your name and contact details. They will be printed at the discretion of the editor.**



# Walcha Weekender

Providing a warm Walcha welcome uniquely!

A new idea to showcase the variety of character and charm of Walcha, with simple sophistication that businesses and community can offer visitors over one or two-night stays is being floated, to be known as Walcha Weekender.



Walcha Weekender is in its infancy and needs people living and working in our local businesses and community to help bring it to life. It needs people who want to collaborate with each other, willing to share your ideas on how we can make and deliver unique weekend experiences, strategically placed throughout a year, and take the lead in rural tourism for rural communities.

A community meeting will be held on 17 June, commencing at 5.30pm, with the venue to be confirmed. Can you please note your interest in attending by emailing Chloe Hoy – [chloe.hoy@dpi.nsw.gov.au](mailto:chloe.hoy@dpi.nsw.gov.au) with your name, mobile number and business or community group you represent.

# 2021 Motorcycle Rally is hotting up

Preparation is underway for the Walcha Motorcycle Rally in 2021. The inaugural event was halted last year by the pandemic, but Walcha is coming back bigger and better for 19 and 20 November 2021.

"Tickets have recently gone on sale and we have already had a great amount of interest in the event, with motorcycle enthusiasts coming from far and wide", Walcha Tourism Manager, Susie Crawford said. "Tickets can be purchased for a Day Pass or Two Day Rally Pass along with Add-ons including Merch Pack & Extras as well as Camping. Complimentary optional organised rides can also be booked when purchasing your tickets," Susie Crawford said.

The program of events and activities will take place at the showground hub and surrounding areas over Friday 19 and Saturday 20 November 2021. Program highlights include guided road rides, supported adventure rides, show & shine of motorcycles and hot rods, freestyle stunt rider demos, wood chop demos, BackTrack dog jumping, demolition derby, Ag Bike competition, trade stalls, bar, good food and more.

A free town loop shuttle bus will also be provided so that attendees can enjoy all the wonderful things that are on offer in Walcha during the Rally.

Arrive Thursday evening for welcome drinks, use Sunday to ride some more great roads in the area or make your way slowly home.

For more information on the rally and to buy tickets, visit <https://walchamotorcyclerrally.com.au/>

**Pitt Son's** REAL ESTATE & LIVESTOCK

SAM PAYNE 0428 667 404 | ANDREW BLOMFIELD 0428 667 402

RON VINCENT 0427 775 821 | GARY OLRICH 0402 432 132

TROY DAVEY 0427 157 557

FOR LATEST  
UPDATES



6777 2000

[www.pittsons.com.au](http://www.pittsons.com.au)



*Quiet Private Setting*



- Four bedrooms with built-ins
- Open plan kitchen and dining
- New carpet
- Wood fire
- Bathroom with tub and shower
- Spacious garage with special entertainment area
- Two sheds – five car spaces plus workshop areas

**PRICED  
TO SELL**

**\$410,000**



Beautifully presented  
*Home on acres*

**REDUCED**



- 5 large bedrooms
- 2 large bathrooms and third shower and toilet
- Large timber kitchen with built in electric oven and double sink
- Dining area has magnificent rural views
- Main living room has large wood heater
- Large study/reading room opening onto covered deck
- 5 acres with permanent flowing water from the Tia River
- Rain water tanks totalling 40,000 litres
- Great home well worth the money

**\$595,000**



Australian Government

# OUR ECONOMY IS ON TRACK TO COME BACK

Australia's economy is on track to come back. In fact, our economy outperformed all major advanced economies in 2020. In the second half of 2020, it grew at the fastest pace on record and there are now more people in work than before the pandemic.

## CONTINUING OUR COMEBACK

To build upon the progress we've made, the next steps in the plan provide more support for individuals, families and businesses to help secure the economy and create more jobs.

### JOB CREATION IS ON TRACK

Over the next 10 years, many more local jobs will be created and secured through investment in roads, rail and community infrastructure.

More homes will be built in more communities thanks to HomeBuilder and the New Home Guarantee.

More training will be available through JobTrainer. And there'll be new apprenticeships, traineeships and more places in higher education.

And there'll be more opportunities for families to access work with more affordable childcare.

### SMALL BUSINESSES ARE ON TRACK

We're supporting hard hit industries such as aviation, tourism and international education.

And continuing tax incentives, such as the Instant Asset Write-off, to encourage

businesses to invest, to grow and to create more jobs.

We're improving employment services so that employers and job seekers are more easily matched.

And our \$1.2 billion investment in digital infrastructure, skills, and incentives means that more businesses in communities right across Australia can be part of the thriving digital economy.

### LOWER TAXES & GREATER SUPPORT FOR MORE AUSTRALIANS

Tax cuts for 10 million low and middle income earners will put more money in their pockets to spend at local businesses, creating more economic activity and more jobs.

It's a plan that will not only help Australia come back, but come back better than ever.

TO FIND OUT HOW IT CAN BENEFIT YOU VISIT

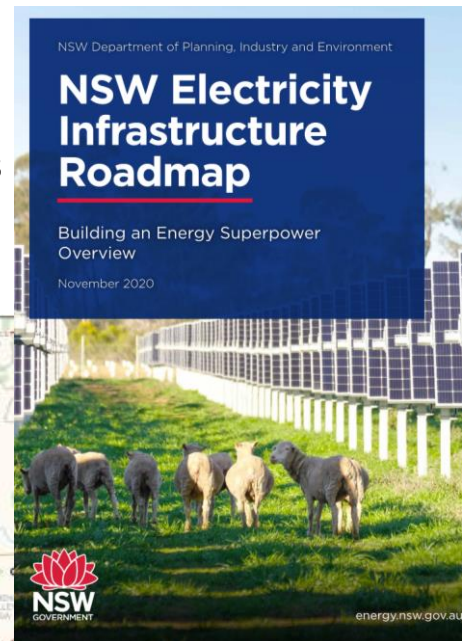
**OURCOMEBACK.GOV.AU**

THIS IS  
**OUR COMEBACK**  
THE ECONOMIC RECOVERY PLAN



## Renewable Energy in Walcha

Last year the NSW Government passed legislation enacting the NSW Electricity Infrastructure Roadmap. This plan was supported by all the major parties - Liberal, National, Labor and the Greens. It is a sensible plan to coordinate the transition from the current generators to renewable energy in NSW.



Map of the proposed New England Renewable Energy Zone showing projects in the planning system - <https://energy.nsw.gov.au/renewables/renewable-energy-zones/new-england-renewable-energy-zone-registration-interest#-where-is-the-new-england-renewable-energy-zone>

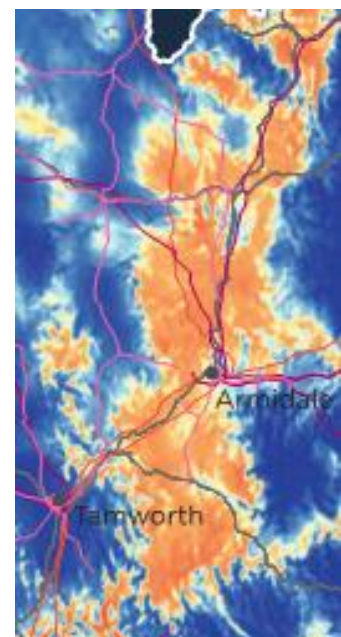
Last Thursday the NSW Government asked for expressions of interest from renewable energy developers in the New England Renewable Energy Zone. The target is 8,000 MW of wind, solar and pumped hydro projects which is about equivalent to the output from the Bayswater Power Station.

### Why is this happening now ?

- The coal generators are nearing the end of their economic life and need replacing in the next 10 years
- Renewable Energy with storage is the cheapest form of new generation

### Why might this be happening around Walcha ?

- Specific areas of the New England have very good wind and solar resources and possible pumped hydro sites.



Wind Resource Map of New England

## WalchaEnergy Renewable Projects

WalchaEnergy is developing the 700MW Ruby Hills Wind Project which is located 10km west of Walcha and just east of Walcha Road, the 350MW Salisbury Solar Project and the 350MW Dungowan Pumped Hydro Project.

WalchaEnergy encourage and welcome anybody to drop in to ask any question about the projects, view maps or find out more by getting a copy of the NSW Farmers Association Landholder Guide. Our office is at 13W Fitzroy Street Walcha.

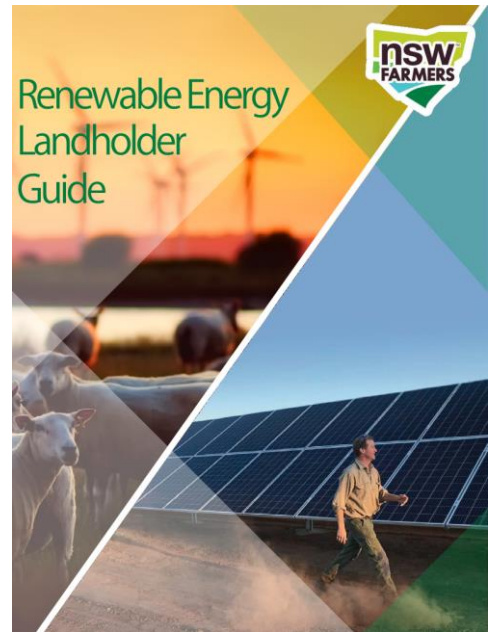
## So what's in it for Walcha?

The 700MW Ruby Hills Project would offer

- 10-15 full time employees maintaining the turbines
- 200 construction workers required over 2 years
- One 700MW project would generate approximately \$140 million over 30 years in income to host landholders, neighbours and the community.
- All this activity would be a massive boost to local small and large businesses
- The community benefit scheme from the Ruby Hills Project would have available approximately \$800,000 per annum for the neighbours to the project and community projects via an annual grant process.
- This is a rare economic opportunity for any small rural town to take advantage of. There will be more droughts and economic hardships. This opportunity would go a long way in helping rural communities during tougher times.

WalchaEnergy would respectfully like to correct some comments made in an ad in last week's Apsley Advocate.

- The Renewable Energy Target (RET) has been fulfilled so currently there are no subsidies for large scale renewable projects.
- Decommissioning Wind Projects is the contractual responsibility of the owner of the wind project not the landholder or council. The cost of this could be covered by a bond or bank guarantee or a sinking fund in the later years of the project life.  
<https://www.cleanenergycouncil.org.au/advocacy-initiatives/community-engagement/decommissioning>
- Project owners are bound by the conditions of consent which in NSW include the removal of the wind turbines.
- Both the project owner and the owner of the land are bound by the lease conditions. These are NOT renegotiated if one party sells. The lease stays with the land.
- Vestas who are the largest wind turbine supplier in the world, announced their new blade manufacturing process which means that blades are recyclable.  
• <https://www.nsenenergybusiness.com/news/company-news/wind-turbine-blade-recycling-cetec/>
- Rate payers will NOT bear the cost of any associated development cost relating to local asset repair or use, including roads and water.





## Register now to work at Council elections

Walcha Council will hold elections on 4 September this year as a part of the Local Government Elections across the state. Now is your opportunity to apply for work in the lead up to the election and on the day.

Applicants can work on the day (Saturday 4th September) in a polling place, or for longer periods in a returning office or in the pre-poll voting centre.

By registering your details on this website you are expressing interest to work at the Local Government Elections 2021. Please note that registering your expression of interest is not an offer of employment, and should not be interpreted as a guarantee that employment will be offered to you.

You can register your interest by logging onto the NSW Electoral Commission website at [www.elections.nsw.gov.au](http://www.elections.nsw.gov.au)



## Local dancer wins at Shakespeare Carnival

Phoebe Imberger has been starring on stage of late, firstly as the local support act for Fanny Lumsden as a part of the Country Halls Tour last weekend at Yarrowitch, and this weekend she starred on stage in Sydney at the Shakespeare Carnival with her school friends, Catie Alcorn and Annabelle Kaberry from PLC Armidale.

The trio won the Shakespeare Carnival for their dancing in Sydney on Sunday 6 June. Competing against other NSW and ACT performers, the girls choreographed their dance by themselves based on Hamlet and brought home the broad ribbon for to the New England, which is a huge accomplishment for the Year 10 students.



Phoebe Imberger pictured centre.

# WIN

## The Ultimate Yard Care Pack

Valued at over \$20,000

**SPEND \$40 IN ANY PURSEHOUSE RURAL BRANCH AND REGISTER ONLINE AT**

**[PURSEHOUSERURAL.COM.AU/COMPETITION](http://PURSEHOUSERURAL.COM.AU/COMPETITION)**

**FOR YOUR CHANCE TO WIN**

See terms and conditions at [pursehouserural.com.au](http://pursehouserural.com.au) NSW Lotteries Number: APP - 0008440952

# ALL CNH HAY & HARVEST PARTS

## 10% OFF STOCKED PARTS

**FREE FREIGHT ON ALL NON-STOCKED PARTS**

Get in quick valid until Monday 31st July 2021 T+C APPLY

DBLR.COM.AU

### Double R

46 DAMPIER ST TAMWORTH  
6765 5244 [tamworthdbl.com.au](http://tamworthdbl.com.au)



# Melbourne Comedy Festival making its way to the New England

Melbourne Comedy Festival's popular Roadshow is heading for the New England North West region to deliver a cracking good night of stand-up laughs from the experts.

The NENW leg of the tour will be emceed by teacher-turned-comedian and actor Ben Knight, who starred in ABC TV's football-themed series *The Warriors*. Joining Ben will be comedians Alex Ward, Nikki Britton, Sam Taunton and Japan's comedy export Takashi Wakasugi, whose act at the Melbourne International Comedy Festival was the insightful and uproarious *Farm Backpacker* (Subclass 417).



Photo by Jim Lee and supplied by Melbourne International Comedy Festival.

Described by Chortle (UK) as a comedian who can reduce her audience to constant waves of laughter, Nikki Britton is known for her appearances on *Hughesy*, *We Have A Problem*. She was a nominee for Melbourne Comedy Festival's Most Outstanding Show Award 2021 and winner of Best Comedy Weekly Award at the 2020 Adelaide Fringe.

Sam Taunton is 'roving idiot' on Channel 10's *The Project* with the trademark captivating storytelling and quick-fire punchlines that took him all the way to a sellout show at the Edinburgh Fringe.

A Queenslander now living in Melbourne, Alex Ward said: "2020 was a year for reflecting... mostly my own face in the laptop screen in bed".

"I reflected on society, my dreams and how hard Zoom tried to ruin live comedy forever. Turns out they couldn't touch us because we're back. Can you believe it? Me, in the flesh, as you live and breathe!

"Despite the lockdown, I managed to achieve some great things in 2020. I wrote and co-starred alongside my dogs (my dogs were the leads) in a sketch for ABC's *At Home Alone Together* series.

"I also baked not one, but two incredible cheesecakes. You could say it was a baking-pan-demic (that is an example of the kind of jokes you won't be seeing at my show. It was a test, if you enjoyed that please re-think what you want to get from your life)," she said.

**The Roadshow will be appearing at eight venues, including:**

TAS Hoskins Armidale: Tuesday June 15	6776 5800
Capitol Theatre Tamworth: Thursday July 1	6766 2028

PLEASE NOTE: Audience 18+

## Quota gives the gift of song

The residents and staff from Walcha MPS were delighted to be presented with newly printed 'Olde Tune' song books from Quota. Many enjoyable singing sessions over the years have resulted in the residents old song books becoming worn and falling apart.

Walcha MPS would like to thank Mary Hoare who was the driving force behind this project and organised for these new books to be made. Mention must also go to Pam Makeham who spent tireless hours typing up the songs and to Lyn Smith who took on the role as editor, ensuring that all of the words of the songs were of the original version.

Resident Doug Garstang said "It is excellent. Nice and clear and I am happy to see my favourite old songs in the book."

The residents are looking forward to continuing their weekly singing sessions with their nice, new song books.



Pictured: Back row – Mary Hoare and Pam Makeham from Quota, with Jocelyn Craig Walcha MPS Diversional Therapist. Front row – Walcha MPS resident Doug Garstang and Lyn Smith from Quota.

**45ft flat top • 45ft single deck cattle float • 26mtr B Double  
19mtr mini B Double • Low Loader available for hire**

**BRIAN**

**Smith**

**TIMBER  
TRANSPORT**

Call us for  
your large  
Transport

**WALCHA**

**02 67772126**

**Bonnie Smith 0429 772 077**

**Brian Smith 0427 780 216**



# Ads launched to boost beef



Images from the MLA's new campaign featuring Australian champion javelin thrower Kelsey-Lee Barber.

An advertising campaign was launched this week by Meat & Livestock Australia (MLA).

Australian Olympic and Paralympic athletes are shining a spotlight on beef's nutritional value and the important role it plays in their diets as part of MLA's new winter beef campaign, **Australian Beef. Feed Your Greatness.**

MLA's Domestic Market Manager, Graeme Yardy, said the campaign aims to instil confidence in Australians to feel good about eating beef for its nutritional credentials and position beef as the leading choice of protein for a healthy balanced meal.

"This year, with the Australian Olympic and Paralympic partnership, beef has an opportunity to reach an audience on a mass scale with one of the largest sporting events in the world to communicate beef's nutritional benefits and strengthen its position as part of a healthy balanced meal," he said.

"The main TV advert stars Australian Olympian

and reigning world champion Javelin thrower, Kelsey-Lee Barber. It takes a light-hearted approach to show whatever your personal greatness, you can help feed it with the natural source of protein in beef.

"An integration with Channel Seven will extend the TV activity across the Olympic and Paralympic Games period. Videos featuring Rugby Sevens Olympian, Lewis Holland, and Chef Sarah Jackson, highlighting the benefits of athletes consuming beef for its essential nutrients will also run across relevant placements on YouTube throughout the Games.

"The campaign connects with consumers via digital screens in retail environments and in gyms. All path-to-purchase advertising and point-of-sale material will feature a beef nutrition message and meal inspiration to help drive in store purchase.

"Australian Beef's social channels will promote

the activity with bespoke social content, along with healthy recipe ideas and engaging infographics that can easily be shared."

PR will support the launch of the TVC and amplify campaign content through healthy and lifestyle media publications. Additionally, an influencer partnership with a focus on popular athletes, fitness and expert dietitians will share their stories of enjoying eating beef as part of a healthy balanced meal.

Independent Butchers will run a consumer promotion throughout June encouraging the purchase of lean beef and release a content series featuring well known media personality Jessica Rowe showcasing three healthy beef recipes to enjoy. Finally, MLA's food service team will partner with Australian Venue Co featuring over 100 pub venues across Australia to include healthy beef dishes on the menu from June, supporting beef's nutritional message on point-of-sale material.

advocate sport

## Wednesday Golf

**Foursomes Championships** with Elders being the trophy givers. Winners were Cheryl McDonald and Julie Olrich with a score of 131 points, nett winners, with 109 1/2 points, went to Simone Sweeney and Polly Locke. Sweepstakes went to Pip Monie and Vicki Heffernan with 110 3/4 points, followed by Donna Martin and Penny King with 111. All very close. There was a NTP on hole 3 which Donna Martin claimed and a second shot on Hole 9 which belonged to Julie Olrich. Well done to all and congratulations to the Champions.

Today sees a 4BBB draw for partners playing for a trophy donated by Deb Richards and Beth Ross. Next week is a stroke round with putting and the monthly mug, along with Country Vets playing for Lyn Laurie's trophy.

## Bowls

**Results from the fours Championships:** G Michie, A McGuffog, D Bird & R Kerr def M Bullen, T Asmus, S Sweeney & K Cameron 26-13. M Steep, A, N & B Goodwin def F Henry, G Clare, I Bird & D Makeham 32-18. G Carter, B Kliendienst, S & K Goodwin def G Michie, A McGuffog, D Bird & R Kerr 23-12.

The final was played on Sunday with G Carter, B Kliendienst, S & K Goodwin def M Steep, A, N & B Goodwin 30-10.

**This weekend:** John Oxley Triples will be played Saturday with a 9:00 for 9:30am start.

## At the 19th

A countback was required to determine the winner of the Stableford round played for a trophy donated by D.A. Locke last Sunday, and it was David Sweeney who prevailed over Mal Ballard after both players accumulated 37 points. Next best were Andrew Crawford, Lee Fletcher and John McCormack all on 36 points, ahead of Michael Stackman and Bryan Lynch both on 35, while Simone Sweeney claimed the final sweepstakes prize on countback from Jenny Lisle on 33 points.

Sharpest shooters at the pins were Willy Brennan who left his tee shot on the third hole a foot away from the cup and Simone Sweeney on the home hole.

Last Saturday 14 players teed off in the weekly nine hole competition, where John McCormack produced the best score on the day to take out the men's division with 16 points, while runner-up Mark Hogan on 13 points.

Ladies winner was Jenny Lisle with 14 points, runner-up was Lorraine Walshe 10 points, where as Brian Wall won the NTP on the third hole.

This Sunday is a two person Ambrose for a prize supplied by Nutrien Boultons.



## Death Notice

### McKENNA Anthony Bennett 'TONY'

Adored Son of John and Pat.  
Devoted Partner to Kim.  
Loving Brother and Brother-in-law to Robert,  
Julie and Rob, Jill and Bob,  
Jane and Rod.  
Good mate to Mitch. Dearly loved Uncle to all  
his Nieces and Nephews.  
Passed away peacefully at Gold Coast  
University Hospital on 4 June 2021.  
AGED 56 YEARS  
Relatives and friends of the late Tony  
McKenna are respectfully invited to attend  
his Funeral Service to be held at All Saints  
Anglican Church, 59 Yamba Street, Yamba  
Friday 11th June 2021,  
commencing at 1:00pm,  
followed by a service of Burial at the Lower  
Clarence Lawn Cemetery, Townsend.

Hope & Alan Bennett  
RIVERVIEW FUNERALS  
59 River St Maclean, NSW 2463  
(02) 6645 2699

## In Memoriam

### Brian SWIFT 'Brin'

Not a day goes by when we don't think of  
you and smile. That laugh and the joy you  
brought to our lives is greatly missed. Our  
little family has a void that no one can fill.  
We miss you now and will miss you forever.  
Always, our beautiful husband and father.  
**Tarra and Morgan X**

## Positions Vacant

### \*Join The Fruit Shop Team\* Full time position + casual

We are looking for an all-rounder who has a  
great personality, excels in customer service,  
takes initiative, drinks too much coffee and  
knows their fruit and veg to join our team  
ASAP. Cash handling and stock management  
experience is preferred, coffee knowledge  
would also be fabulous but we are happy to  
train you as long as you are willing to learn.  
Monday to Saturday availability is a must  
along with flexibility of hours from 6:30 am to  
6pm. This is a full time position of 38 hours per  
week and we ask the successful applicants to  
be committed long term to the team.  
We are also looking for a junior for Saturday  
mornings, with more work available during  
school holidays. No experience required,  
however a great attitude, open mind to  
learning new skills and a hard working nature  
is a necessity.  
If this sounds like you please call in and see  
Sophie or email your resume to:  
thefruitshopwalcha@outlook.com

## Positions Vacant (cont)

### PPT & Casual Care Service Employee/AIN Apsley Riverview Walcha

#### About Us

Our mission is to provide care and  
accommodation for older Australians, with  
a commitment to excellence. For over 75  
years, we have been one of Australia's most  
experienced and trusted providers of aged  
care services. We know how to provide  
compassionate care.

#### About the Role

We currently have vacancies for both  
permanent part time and casual employees  
at our Walcha Facility. As a Care Service  
Employee, you will enhance the well-being of  
our residents by supporting them with a range  
of daily life activities.

#### About You

Driven by compassion, you want to make a  
difference to the lives of others. Applying your  
skills from your Certificate III in Aged Care  
or relevant qualification, you are comfortable  
with providing outstanding personal care.  
Most importantly, you have a professional  
approach to providing customer service,  
and are committed to the provision of a truly  
person-centred care.

#### What we can offer you

As an employee at PAC, you are rewarded  
and recognised for your work, and you'll have  
access to a range of perks and benefits.  
These include:

- Not-for-profit salary packaging benefits
- Permanent and Casual positions available
- Work with a supportive and dedicated team
- Grow your career with one of Australia's  
most trusted providers of Aged Care

#### How you can apply

Head to our website [www.pacnsw.org.au](http://www.pacnsw.org.au)  
or email [gkington@pcnsw.org.au](mailto:gkington@pcnsw.org.au) with any  
questions.

## Work Wanted

**Neat, Clean & Green Home Maintenance:**  
Mowing/window cleaning. Dave 0498 382 421

## House to Let

'Wingate' – Ideal farm location 5 mins from  
town on Brackendale Road. For enquiries and  
inspections call Henry King on 0402 749 370.

## Raffle Results

Poultry Club Wood Raffle won by Peter  
Norbury and drawn by Julie Foster.  
Thanking supporters.

## Public Notices



### WALCHA COUNCIL

#### Draft 2021 – 2022 Operational Plan including Budget

The Council, at its Ordinary Meeting held on 26 May  
2021, approved a DRAFT 2021 – 2022 Budget &  
Operational Plan. The draft Budget and Operational  
Plan will be on public exhibition for a period of  
28 days as per the Local Government Act 1993  
Section 405(3). Copies of the Plan are available  
at the Council Chambers, Hamilton Street, Walcha  
and on its website: [www.walcha.nsw.gov.au](http://www.walcha.nsw.gov.au) until  
5.00pm Wednesday 23 June 2021. During this  
time written submissions on the draft Budget and  
Operational Plan will be received by Council.

Chris Weber, Interim General Manager  
WALCHA COUNCIL  
PO Box 2, Walcha NSW 2354

### DR GENEVIEVE FREER WALCHA SURGERY PRACTICE

**Flu Vaccine Available**  
Phone 6777 2068  
0429 668 583

**Experienced Cosmetic Doctor** available in  
Walcha for anti wrinkle injections. Please call  
Dr Hammond 0409 938 568 to discuss further.

**Omission Advocate 2 June.** The Yarrowitch  
Community Group would like to also thank  
Peter Norbury Motors for his support.

## For Sale

**GOOD QUALITY FIREWOOD**  
Split and delivered. 0427 331 556.

**Dead or Alive motorbikes**, quads, trikes,  
buggies etc. Any make, any model and all  
parts. Cash on pick up. Phone 0402 861 364.

**4x4 hay and silage.** Hay \$55. Silage from  
\$77. Pasture, rye, lucerne. Nowendoc  
Phone Robert 0488 966 690

**Laver pullets.** All breeds, 22 wks. Delivered  
Fri 25th June Phone Jim 0428194105

**Expressions of interest**  
**Carbon Credit Farming Info Session**  
**Lorraine Gordon** – basics about increasing  
soil carbon and set up to trade.

**Rachel Lawrence** – general info about how  
carbon gets in and out of land and relevance  
of carbon to farm productivity.  
Opportunity for Q&A. Proposed date 20th  
August 2021 in Walcha.  
Please contact: [chloe.hoy@dpi.nsw.gov.au](mailto:chloe.hoy@dpi.nsw.gov.au)  
or phone 0408 993 455 to **register your  
interest by 30th June 2021.**





## Dry & Seasoned Firewood

- Box wood
- Iron Bark
- Blue Gum
- Stringy Bark
- Split or log form
- Strainer posts



For pick-up or delivery

Phone Damian **0418 452 333**

## Nick Moore PLUMBING & EXCAVATION SERVICES



Highly qualified and experienced plumber  
All aspects of Plumbing and Gas Fitting  
Wood heater installation  
Roofing and Guttering  
Gold Licence No 59555C

**Nick 0418 691 306**

[nickmoore203@yahoo.com.au](mailto:nickmoore203@yahoo.com.au)

Katy 0422 034 660

## SOLICITORS

**PATTERSON BYFIELD & BRYEN**

James Levingston - Sophie Thomson

- Conveyancing ▪ Wills ▪ Family Law
- Power of Attorneys ▪ Estates
- Traffic Offences

**Ph 6777 2066 Fax 6777 2959**

Email: [pbbwalcha@northnet.com.au](mailto:pbbwalcha@northnet.com.au)

LOCAL FIRM - OVER 60YRS IN THE COMMUNITY

## STORAGE CENTRE WALCHA

20' Containers available for rent \$30 pw + GST

Secure Undercover parking for cars,  
vans etc \$10 pw +GST

**ANGUS 0427 787 332**

6778 7334

- ★ Wool classing ★ crutching
- ★ shearing ★ fencing
- ★ rural labour hire
- ★ camp outs

Lynden - 0499 477 716

Karina - 0456 189 275



## SPLITZAIR WALCHA

- AIR CONDITIONING & ELECTRICAL

- Domestic & Commercial
- Split system specialists
- Quality installations



**Dave 0438 007 275**

Lic. 182154c

New England IT

## ONSITE COMPUTER SERVICE + SALES

Tim Sutton **0414 874 523**

## Ian Bird Electrical

**24 hour service**

for all your electrical needs

**6777 2745**

159E North St, Walcha. Lic No. 45483c

## A G W RURAL CONTRACTING

GPS Equipped boom spraying

Andrew Wauch **0427 549 748**

## MOBILE-FIX AUTO+AIR

Mobile Repairer &  
Airconditioning Specialist

Licensed Vehicle Repairer  
Lic.No.46696 RTA Lic No. AU22616

**PATRICK STACE - WALCHA**  
Mob. 0428 780 077 Ph. 6778 0595



Tree lopping  
Tree removal  
Truck & chipper  
Bobcat  
Post hole digger  
Trencher  
Woolshed cleaning  
Stockyard cleaning



Scott Kermode

**0427 100 889**

**TREETOP**  
services

[treetopservices@bigpond.com](mailto:treetopservices@bigpond.com)

## CHIROPRACTOR

**K Samantha Goor**

B.Sc. Anatomy (NSW) M Chiroprac (Macq)

Tuesday & Friday from 9.00am

**6777 1340**

## SELF STORAGE

NORTH STREET - WALCHA

**VARIOUS SIZED SHEDS**

**SECURITY FENCED**

**67773899** 0428 653 307

## THE APSLEY Advocate

**LONG  
WEEKEND  
DEADLINE**



All advertising and editorial due  
midday Friday 11 June. Sport no later  
than 9.00am Tuesday 15 June.

Your cooperation is appreciated.

[wtc@walchatelecottage.com.au](mailto:wtc@walchatelecottage.com.au)

## DISCLAIMER

LETTERS TO THE EDITOR are submitted on the condition that The Walcha Telecottage as the publisher of The Apsley Advocate may edit and has the right to, and license third parties to reproduce in electronic form and communicate these letters. The Apsley Advocate is printed by The Walcha Telecottage, PO Box 116 Walcha NSW 2354. Phone 6777 1111 Fax 6777 1112. The Walcha Technology Co Operative Limited, the Editor and Staff of this Newspaper have published any article here-in in good faith and bear no responsibility in respect to the accuracy of the information contained in such article. Any person or persons publishing material in this Newspaper do so in the knowledge that they shall personally accept any responsibility for the accuracy and other correctness of such articles and also accept full responsibility for the legal consequences if it be found that the article contains any inaccuracies in the contents of any such articles.

**DEADLINE MONDAY 4.30PM.**

Editor: Anthea Macpherson. Advertising and Sport: Rosalie Gibson, Megan Scrivener and Sue Jackson.

## church notices



**ANGLICAN - SUNDAY 7:30am**  
Communion and 10.00am Family Service.

**PRESBYTERIAN - SUNDAY Service**  
9:30am, you're welcome to come and join us. Youth Group for school years 5 - 11. Contact Graham Barnes on 6777 2539 for more details.

**CATHOLIC MASS 10:00am** with conditions.

# Marchant Est. 2000

**BROS. PTY LTD**



A FULL RANGE OF AFFORDABLE TRANSPORT & EARTHMOVING

## WATER CARTING

Dam construction/maintenance, stick raking, road building, site prep, pipe laying and all timber work.

Check out our website for the full range of machinery, attachments and services available



**DELIVERING  
SPLIT  
FIREWOOD**

ORGANIC, LOW SMOKE, HIGH HEAT.

Beat the climate change, order now

**Earthmoving and Heavy Haulage Transport**  
**Jason 0427 490 487**

02 6777 2024 marchantbros@bigpond.com  
www.marchantbros.com.au

# WALCHA BOWLING & RECREATION CLUB

**JUNE**

## Thursday 10

9.30am-10am – Ladies Bowls *(new time)*

1.00pm – Social Bowls

## Friday 11

2.00pm – BINGO

6.00pm – Bistro

Chicken and Prawn Parcels

Creamy Bacon Baked Fish

Curried Sausages

Regular menu plus delicious desserts

7.00pm – FREE BINGO

8.00pm – Meat and Veg Raffles

followed by Members Draw

## Saturday 12

6.00pm – Bistro open

## Sunday 13

12pm – Bistro open

1.00pm – Meat & Veg Raffles

**MEMBERS  
DRAW  
\$250**

## BOWLS TOURNAMENTS

**JOHN OXLEY  
TRIPLES**

Saturday and Sunday  
9am for 9.30am start

**OPEN MIXED PAIRS**  
Monday

BASED ON 2020/2021 MEMBERSHIP CARD  
NSW permit No. LTPS/11/08895 (conditions apply)  
NSW permit No. LTPS/11/11968 (conditions apply)

Monday to Wednesday 4.00pm to close

Thursday 12 midday to close

Friday 2.00pm to close

Saturday and Sunday 11am to close

**Phone 6777 2077**

Do you live in Walcha Shire?  
If so you **MUST** be a member  
to enter the Club.

Social Membership ..... \$15  
Full Membership ..... \$105

**FOR ALL YOUR EARTHWORKS TRANSPORT AND ELECTRICAL NEEDS**



Freight & Transport

Machinery Float

Road building and maintenance

Dam maintenance and construction

Firebreaks • Drilling • Trenching • Stick Raking

Mulching • Fence Clearing • General Earthworks

Erosion Control • Site Preparation

Electrical • Pipe Laying

10ft Slashing

Ian Notley 04188 29188

Mark Notley 0422 637 686

Office 02 6777 6595



ALL ASPECTS OF RURAL,  
COMMERCIAL & CIVIL WORKS  
www.eteservices.com.au



Wayne Hoy: 0427 281 060  
Matthew Hoy: 0427 322 640  
Aaron Bullen: 0409 776 340

**SPRAYING  
SOWING**

**EXCAVATING  
EARTHMOVING**

*GPS & Auto Steer Equipped*

- Komatsu PC300 Excavator
- Cat 324 Excavator
- Cat D6N Dozer
- 2000ltr Quikspray Trailers
- Casotti's
- 4 x4 Tip Truck
- 4x4 Trucks & Boomsprays
- Full auto Rate Control
- GPS & Autosteer
- 4x4 Tractors GPS Equipped
- 20 & 24 disc Williams Seeders
- Fencing & Rural Contracting