

AWAIRNet

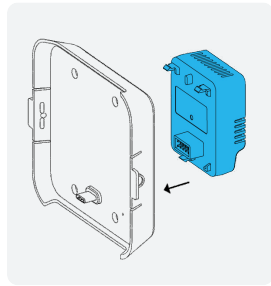
Installers Mini-Guide



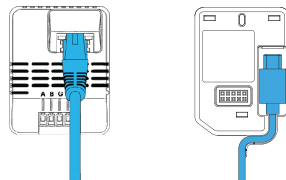
Onboarding

Leader Selection One Leader Per Mesh

Leader Requires Ethernet and Power



1. Choose any AwairNet Mount to be a Leader.
Power it via PoE or USB-C.



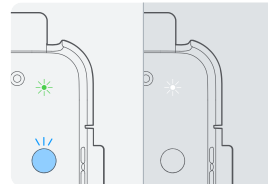
2. Wait for the LED to turn Blue.
Hold the button until you hear a beep.



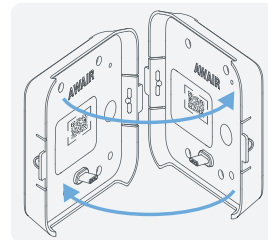
3. When RGB becomes flashing green, process is complete.
This can take up to a minute.

Nodes One Leader Supports Many Nodes

Nodes Only Need Power



1. Press the button on the leader briefly.
The LED will flash white when in onboarding mode.



2. While flashing white, bring the leader face to face with a powered node.
You should hear a beep after a second or two. The node is now onboarded.
The powered node should have a blue LED.

Dashboard Seeing the Data

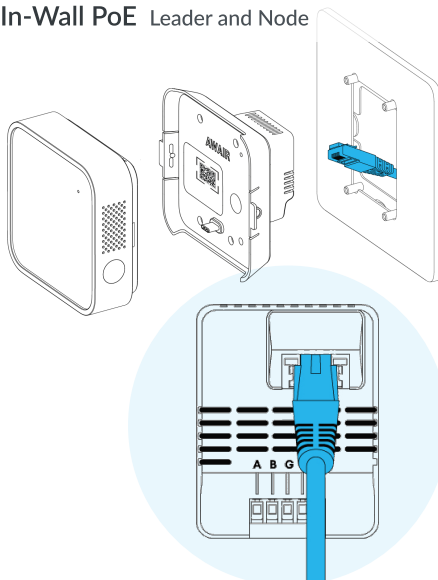


Onboard via the AwairNet Mount QR code using the Awair Business mobile app.
No additional configuration required.

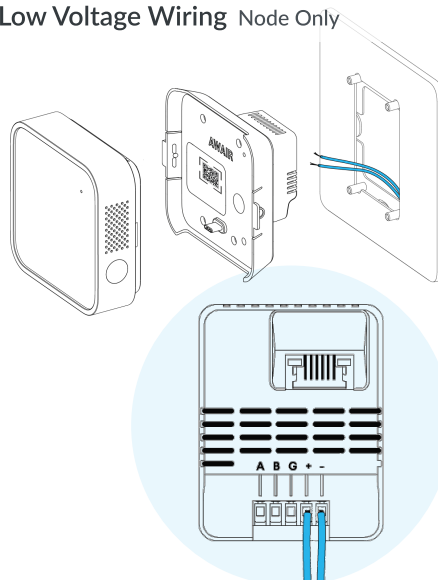
Installation

For more information, visit here: <https://install-omni.getawair.com/>

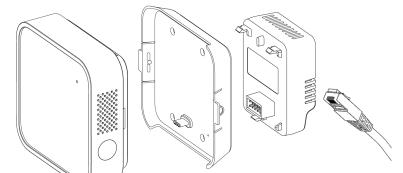
In-Wall PoE Leader and Node



Low Voltage Wiring Node Only



On-Desk USB-C Leader and Node



On-Wall USB-C Node Only

