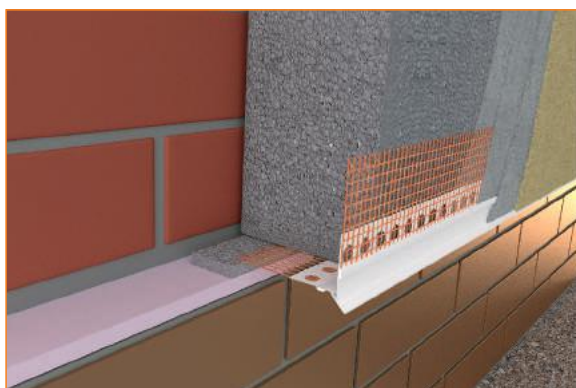
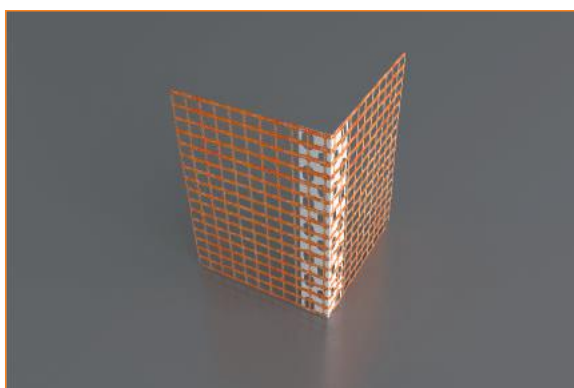




## CATALOGUE OF ANCILLARY MATERIALS

JANUARY 2017 EDITION



THERMAL INSULATION MATERIALS  
MECHANICAL FIXING  
REINFORCING MESH  
BEADS, PROFILES & TRIMS  
TOOLS  
POWER TOOLS  
OTHERS  
MARKETING MATERIALS

RELIABLE INSULATION SYSTEMS **BASED ON EXPERIENCE**

# GENERAL DELIVERY CONDITIONS SOLTHERM CATALOGUE

## I. ORDERING AND ORDER PROCESSING

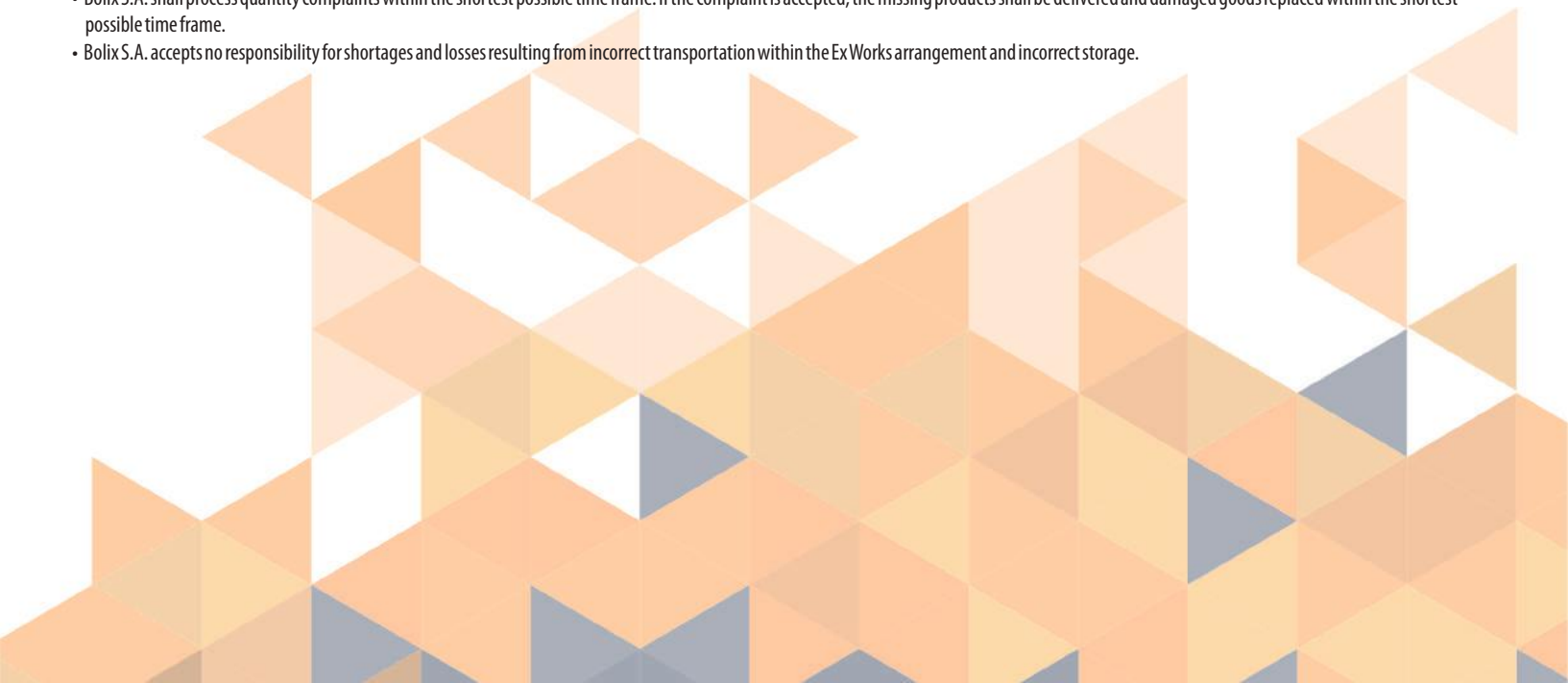
1. Bolix S.A. sells goods, whose basic range is listed in the current CATALOGUE, based on orders placed by the Ordering Party.
2. Customer Service Department is at our customers' disposal on working days from 8 a.m. to 4 p.m. You can also place orders by fax 24 hours a day, if you find it more convenient. Fax: +48 33 475 06 23; +48 33 475 06 50 or by e-mail sent to the person responsible for the region.
3. To place orders by fax, we recommend to use the order form provided by Bolix S.A. The order should be made in written form and contain the following:
  - name and quantity of goods with the unit of measurement
  - information on an additional/investment discount, if any (reference number of the discount)
  - place of delivery with postcode
  - delivery method
  - Ordering Party's name and addressMoreover, the order should have the company stamp and signature of the person authorised to place orders. If a delivery address differs from the Ordering Party's address, put name and surname, identity document number and contact number of the person authorised to accept the order.
4. The seller shall not be held responsible for mistakes made in the order by the Ordering Party.
5. In the event the Ordering Party is in arrears with payments or its credit limit has been exceeded, the Bolix Company may refuse to accept and process further orders. Lead time shall be specified for each order individually by a Customer Service Employee. The customer and supervisor in Bolix shall be informed by phone about the specified lead time.
6. BOLIX S.A. reserves the right to change prices in the Catalogue without any advance notice.
7. The Ordering Party may not introduce changes in the order or cancel it unless prior arrangements are made with a Customer Service Employee and confirmed in writing.
8. BOLIX S.A. shall confirm prices and lead time on the next working day the latest.

## II. TERMS AND CONDITIONS OF DELIVERY

1. All products are supplied in packaging suitable for the product sold and in conformity with the offer specified in the current CATALOGUE.
2. All Bolix products specified in the current CATALOGUE shall be delivered under the address provided by the Ordering Party within 4 to 14 working days depending on the products ordered and delivery method. Lead time for other products, which are not included in the Bolix offer, shall be specified individually for the Ordering Party.
3. BOLIX S.A. reserves the right to extend lead time if an order for some products does not meet the required production minimum.
4. Delivery at the place named by the Ordering Party in the order may be made on the following conditions:
5. Delivery by a carrier arranged by the Seller to the Ordering Party's outlets.
6. Delivery to a carrier arranged by the Ordering Party within the "Ex Works" shipping terms.
7. Distribution limitations:
  - The goods ordered shall be added to other orders for SOLTHERM or BOLIX products made by the customer, if any.
  - Otherwise the customer shall be charged with shipping costs. The cost shall be established with the customer prior to shipping.
8. In the event goods have been delivered at the wrong address due to wrong address provided by the Ordering Party, the Seller has the right to charge the Ordering Party with all additional shipping costs incurred due to the mistake.
9. BOLIX S.A. shall notify the Ordering Party of back orders, if any.
10. Please note that products delivered may vary slightly in terms of colour and composition from those pictured in the CATALOGUE.

## III. COMPLAINTS

Complaints and damages in transport:

- Complaints concerning missing goods and damages in transport shall be made in writing upon acceptance of delivery and with the purchasing documentation enclosed. Each time the complaint shall contain a description of the discrepancies between the goods delivered and the Stock Issue Confirmation (CI) and consignment note, and shall be confirmed by the driver's signature.
  - Bolix S.A. shall process quantity complaints within the shortest possible time frame. If the complaint is accepted, the missing products shall be delivered and damaged goods replaced within the shortest possible time frame.
  - Bolix S.A. accepts no responsibility for shortages and losses resulting from incorrect transportation within the Ex Works arrangement and incorrect storage.
- 



# THERMAL INSULATION MATERIALS



## STYROFOAM EPS 70-032 GRAPHITE\*

- EPS–EN13163–T(1)–L(2)–W(2)–S(2)–P(5)–DS(N)2–DS(70,-)2–BS115–CS(10)70–TR100
- Compressive strength at 10% deformation  $\geq 70$  [kPa]
- Flexural strength:  $\geq 100$  [kPa]
- Dimensions: 1000 x 500 [mm]
- Reaction to fire classification: E wg EN 13501

Thermal conductivity coefficient [W/mk]	Bulk density kg/m <sup>3</sup>
$\lambda \leq 0,032$	15

THICKNESS [MM]	PCS PER PACKAGE	AMOUNT [M <sup>2</sup> ] PER PACKAGE	PACKAGE VOLUME [M <sup>3</sup> ]
10	60	30	0.3
20	30	15	0.3
30	20	10	0.3
40	15	7.5	0.3
50	12	6	0.3
60	10	5	0.3
70	8	4	0.28
80	7	3.5	0.28
90	6	3	0.27
100	6	3	0.3
120	5	2.5	0.3
140	4	2	0.28
150	4	2	0.3
160	4	2	0.32
180	3	1.5	0.27
200	3	1.5	0.3
250	2	1	0.3

## STYROFOAM 70-040 WHITE\*

- EPS–EN13163–T(1)–L(2)–W(2)–S(5)–P(10)–DS(N)2–DS(70,-)2–TR100
- Compressive strength at 10% deformation:  $\geq 70$  [kPa]
- Dimensions: 1000 x 500 [mm]
- Reaction to fire classification: E according to EN 13501

Thermal conductivity coefficient [W/mk]	Bulk density kg/m <sup>3</sup>
$\lambda \leq 0,040$	15

THICKNESS [MM]	PCS PER PACKAGE	AMOUNT [M <sup>2</sup> ] PER PACKAGE	PACKAGE VOLUME [M <sup>3</sup> ]
10	60	30	0.3
20	30	15	0.3
30	20	10	0.3
40	15	7.5	0.3
50	12	6	0.3
60	10	5	0.3
70	8	4	0.28
80	7	3.5	0.28
90	6	3	0.27
100	6	3	0.3
120	5	2.5	0.3
140	4	2	0.28
150	4	2	0.3
160	4	2	0.32
180	3	1.5	0.27
200	3	1.5	0.3
250	2	1	0.3

\*The possibility of purchasing mineral wool / eps must be confirmed by customer service department  
The boards from 50mm to 200mm may be produced with milled edges

# STYROFOAM EPS 150-035 BLUE\*

- EPS–EN13163–T(2)–L(3)–W(3)–S(5)–P(10)–DS(N)2–DS(70,-)3–DLT(2)5–BS200–CS(10)150–TR100
- Compressive strength at 10% deformation: ≥ 150 [kPa]
- Flexural strength: ≥ 200 [kPa]
- Dimensions: 1000 x 500 [mm]
- Reaction to fire classification: E according to EN 13501

Thermal conductivity coefficient [W/mk]

$\lambda \leq 0,035$

Bulk density kg/m³

24

THICKNESS [MM]	PCS PER PACKAGE	AMOUNT [M²] PER PACKAGE	PACKAGE VOLUME [M³]
10	60	30	0.3
20	30	15	0.3
30	20	10	0.3
40	15	7.5	0.3
50	12	6	0.3
60	10	5	0.3
70	8	4	0.28
80	7	3.5	0.28
90	6	3	0.27
100	6	3	0.3
120	5	2.5	0.3
140	4	2	0.28
150	4	2	0.3
160	4	2	0.32
180	3	1.5	0.27
200	3	1.5	0.3
250	2	1	0.3

# STYROFOAM EPS 100-035 WHITE\*

- EPS–EN13163–T(1)–L(2)–W(2)–S(2)–P(5)–DS(N)2–DS(70,-)3–DLT(1)5–BS150–CS(10)100–TR100
- Compressive strength at 10% deformation: ≥ 100 [kPa]
- Flexural strength: ≥ 150 [kPa]
- Dimensions: 1000 x 500 [mm]
- Reaction to fire classification: E according to EN 13501

Thermal conductivity coefficient [W/mk]

$\lambda \leq 0,035$

Bulk density kg/m³

20

THICKNESS [MM]	PCS PER PACKAGE	AMOUNT [M²] PER PACKAGE	PACKAGE VOLUME [M³]
10	60	30	0.3
20	30	15	0.3
30	20	10	0.3
40	15	7.5	0.3
50	12	6	0.3
60	10	5	0.3
70	8	4	0.28
80	7	3.5	0.28
90	6	3	0.27
100	6	3	0.3
120	5	2.5	0.3
140	4	2	0.28
150	4	2	0.3
160	4	2	0.32
180	3	1.5	0.27
200	3	1.5	0.3
250	2	1	0.3

\*The possibility of purchasing mineral wool / eps must be confirmed by customer service department  
The boards from 50mm to 200mm may be produced with milled edges

## ISOFA<sup>\*</sup>

### MINERAL WOOL BOARD FOR EXTERIOR WALL INSULATION

- 50-99mm thickness - MW-EN 13162-T4-DS(TH)-WS-MU1-AW1-CS(10)20-TR10-WL(P)
- 100-200mm thickness - MW-EN 13162-T4-DS(TH)-WS-MU1-AW1-CS(10)30-TR10-WL(P)
- Declared thermal conductivity coefficient:  $\lambda \leq 0,036$  [W/mK]
- Compressive strength at 10% deformation 1. 50-99 thickness:  $\geq 20$  [kPa] 2.  $\geq 30$  [kPa]
- Tensile strength perpendicular to the faces TR:  $\geq 10$  [kPa]
- Dimensions: 1000x600 [mm]
- Reaction to fire classification: A1 according to EN 13501-1

THICKNESS [MM]	NO. OF PACKAGES ON A PALLET	AMOUNT [M <sup>2</sup> ] PER PALLET	VOLUME OF PLATES ON THE PALLET [M <sup>3</sup> ]
50	16	57,6	2.88
60	16	48	2.88
80	20	36	2.88
100	16	28,8	2.88
120	20	24	2.88
140	16	19,2	2.688
150	16	19,2	2.88
160	12+16	33,6	5.376
180	12	14,4	2.592
200	12	14,4	2.88

Minimum quantity order is six pallets

## ISOFA LM<sup>\*</sup>

### MINERAL WOOL BOARD FOR EXTERIOR WALL AND CEILING INSULATION

- 50-200mm thickness - MW-EN 13162-T5-DS(TH)-TR90-WS-CS(10)60-MU1-WL(P)
- 210-300mm thickness - MW-EN 13162-T5-DS(TH)-TR80-WS-CS(10)60-MU1-WL(P)
- Declared thermal conductivity coefficient:  $\lambda \leq 0,041$  [W/mK]
- Compressive strength at 10% deformation:  $\geq 60$  [kPa]
- Tensile strength perpendicular to the faces 1. 50-200mm thickness TR:  $\geq 90$  [kPa] 2. 210-300mm thickness TR:  $\geq 80$  [kPa]
- Dimensions: 1200x200 [mm]
- Reaction to fire classification: A1 according to EN 13501-1

THICKNESS [MM]	NO. OF PACKAGES ON A PALLET	AMOUNT [M <sup>2</sup> ] PER PALLET	VOLUME OF PLATES ON THE PALLET [M <sup>3</sup> ]
50	60	115.2	5.76
80	50	72	5.76
100	60	57.6	5.76
120	50	48	5.76
150	40	38.4	5.76
200	30	28.8	5.76
250	50	24	6
300	40	19.2	5.76

Minimum quantity order is six pallets

## ISOFA LM-G (ONE-SITE COATED)<sup>\*</sup>

### MINERAL WOOL BOARD FOR CEILING INSULATION

- 50-200mm thickness - MW-EN 13162-T5-TR60-WS-CS(Y)30-MU1
- Declared thermal conductivity coefficient:  $\lambda \leq 0,041$  [W/mK]
- Compressive strength at 10% deformation:  $\geq 30$  [kPa]
- Tensile strength perpendicular to the faces TR:  $\geq 60$  [kPa]
- Dimensions: 1200x200 [mm]
- Reaction to fire classification: A1 according to EN 13501-1

THICKNESS [MM]	NO. OF PACKAGES ON A PALLET	AMOUNT [M <sup>2</sup> ] PER PALLET	VOLUME OF PLATES ON THE PALLET [M <sup>3</sup> ]
50	240	57.6	2.88
80	150	36	2.88
100	120	28.8	2.88
120	100	24	2.88
150	80	19.2	2.88
200	60	14.4	2.88

Minimum quantity order is six pallets

# MINERAL WOOL PAROC CGL 20CY\*

PRIMED AND WITH CHAMFERED EDGES ON ONE SURFACE

- Lamella ceiling board for BOLIX IZO-STROP
  - MW-EN13162-T5-DS(70,90)-CS(Y)20-TR20-WS-WL(P)-MU1
  - Declared thermal conductivity coefficient:  $\lambda \leq 0,037$  [W/mK]
  - Compressive strength at 10% deformation:  $\geq 20$  [kPa]
- Tensile strength perpendicular to the faces TR:  $\geq 20$  [kPa]
  - Dimensions: 1200 x 200 [mm]
  - Reaction to fire classification: A1 according to EN 13501
  - Rigid, fire and alkali resistant stone wool

THICKNESS [MM]	NO. OF PACKAGES ON A PALLET	AMOUNT [M²] PER PALLET	VOLUME OF PLATES ON THE PALLET [M³]
50	33	95.04	5.13
60	33	79.2	5.13
80	42	60.48	5.21
100	33	47.52	5.13
120	33	39.6	5.13
150	33	31.68	5.13
Minimum quantity order is six pallets			

# MINERAL WOOL PAROC LINIO 80\*

- Lamella board for exterior wall and ceiling insulation
  - MW-EN13162-T5-DS(70,90)-CS(Y)50-TR80-WS-WL(P)-MU1
  - Declared thermal conductivity coefficient:  $\lambda \leq 0,040$  [W/mK]
  - Compressive strength at 10% deformation:  $\geq 50$  [kPa]
- Tensile strength perpendicular to the faces TR:  $\geq 80$  [kPa]
  - Dimensions: 1200 x 200 [mm]
  - Reaction to fire classification: A1 according to EN 13501
  - Rigid, fire and alkali resistant stone wool

THICKNESS [MM]	NO. OF PACKAGES ON A PALLET	AMOUNT [M²] PER PALLET	VOLUME OF PLATES ON THE PALLET [M³]
50	36	103.68	5.148
80	45	64.8	5.184
100	36	51.84	5.184
120	36	43.2	5.184
140	24	34.56	4.84
150	36	34.56	5.184
200	36	25.92	5.184
Minimum quantity order is six pallets			

# MINERAL WOOL PAROC LINIO 10\*

- Mineral wool board for exterior wall insulation
  - MW-EN13162-T5-DS(70,90)-CS(10)20-TR10-WS-WL(P)-MU1
  - Declared thermal conductivity coefficient:  $\lambda \leq 0,036$  [W/mK]
  - Compressive strength at 10% deformation:  $\geq 20$  [kPa]
- Tensile strength perpendicular to the faces TR:  $\geq 10$  [kPa]
  - Dimensions: 1200 x 600 [mm]
  - Reaction to fire classification: A1 according to EN 13501
  - Rigid, fire and alkali resistant stone wool

THICKNESS [MM]	NO. OF PACKAGES ON A PALLET	AMOUNT [M²] PER PALLET	VOLUME OF PLATES ON THE PALLET [M³]
50	24	103.68	5.56
80	30	64.8	5.56
100	24	51.84	5.56
120	30	43.2	5.56
140	24	34.56	5.21
150	24	34.56	5.56
200	18	25.92	5.56
Minimum quantity order is six pallets			

\*The possibility of purchasing mineral wool / EPS must be confirmed by Customer Service Department  
\*\*Special customized product

## MINERAL WOOL PAROC LINIO 15\*

- Mineral wool board for exterior wall insulation
- MW-EN13162-T5-DS(70,90)-CS(10)30-TR15-WS-WL(P)-MU1
- Declared thermal conductivity coefficient:  $\lambda \leq 0,037$  [W/mK]
- Compressive strength at 10% deformation:  $\geq 30$  [kPa]
- Tensile strength perpendicular to the faces TR:  $\geq 15$  [kPa]
- Dimensions: 1200 x 600 [mm]
- Reaction to fire classification: A1 according to EN 13501
- Rigid, fire and alkali resistant stone wool

THICKNESS [MM]	NO. OF PACKAGES ON A PALLET	AMOUNT [M <sup>2</sup> ] PER PALLET	VOLUME OF PLATES ON THE PALLET [M <sup>3</sup> ]
20	36	259.2	5.51
30	33	166.32	5.36
50	24	103.68	5.51
100	24	51.84	5.51
120	30	43.2	5.51

Minimum quantity order is six pallets





# FIXINGS



# KOELNER / RAWLPLUG: KI-10

UNIVERSAL HAMMER - IN WALL FIXING



## TECHNICAL DATA

HOLE DIAMETER  
WASHER DIAMETER  
EUROPEAN TECHNICAL APPROVAL  
PLUG MATERIAL  
PIN TYPE AND MATERIAL

## KI-10

10 mm  
60 mm  
ETA-07/0291  
PP  
NAIL MADE OF PP REINFORCED WITH GLASS FIBRE  
ENABLING EXPANSION OF THE PLUG

FIXING DIMENSIONS		
CODE	DIAMETER x LENGHT (MM)	PCS PER PACKAGE
KI-090	10x90	250
KI-120	10x120	250
KI-140	10x140	250
KI-160	10x160	250
KI-200	10x200	250
KI-220	10x220	250

INSULANT	KI-10
EPS	•
XPS	•
MINERAL WOOL	
LAMELLA	

SUBSTRATE	KI-10
A	•
B	•
C	•
D	•
E	•



FIXING DIMENSIONS		
CODE	DIAMETER x LENGHT (MM)	PCS PER PACKAGE
KI-180	10x180	250

**THE BEST VALUE FOR MONEY  
OFF THE SHELF**

# KOELNER / RAWLPLUG: TFIX-8ST

SCREW-IN FACADE FIXING



## TECHNICAL DATA

HOLE DIAMETER  
WASHER DIAMETER  
EUROPEAN TECHNICAL APPROVAL  
PLUG MATERIAL  
PIN TYPE AND MATERIAL

## TFIX-8ST

8 mm  
60 mm  
ETA-11/1044  
PP  
GALVANIZED CARBON STEEL WITH PA  
HEAD REINFORCED WITH GLASS FIBRE

FIXING DIMENSIONS					
CODE	DIAMETER x LENGHT (MM)	PCS PER PACKAGE	CODE	DIAMETER x LENGHT (MM)	PCS PER PACKAGE
TFIX-8ST-115	8x115	200	TFIX-8ST-335	8x335	100
TFIX-8ST-135	8x135	200			
TFIX-8ST-155	8x155	200			
TFIX-8ST-175	8x175	200			
TFIX-8ST-195	8x195	200			
TFIX-8ST-215	8x215	100			
TFIX-8ST-235	8x235	100			
TFIX-8ST-255	8x255	100			
TFIX-8ST-275	8x275	100			
TFIX-8ST-295	8x295	100			

INSULANT	TFIX-8ST
EPS	•
XPS	•
MINERAL WOOL	•
LAMELLA	•

SUBSTRATE	TFIX-8ST
A	•
B	•
C	•
D	•
E	•

# TFIX-8ST-TOOL SETTING TOOL FOR POWER NUTDRIVERS

FOR CORRECT INSTALLATION OF SCREW-IN FIXING



CODE	PCS PER PACKAGE
TFIX-8ST-TOOL	1

# KOELNER / RAWLPLUG: TFIX-8P

HAMMER-IN FACADE FIXING



TECHNICAL DATA

HOLE DIAMETER  
WASHER DIAMETER  
EUROPEAN TECHNICAL APPROVAL  
PLUG MATERIAL  
PIN TYPE AND MATERIAL

TFIX-8P

8 mm  
60 mm  
ETA-13/0845  
PP  
1 GALVANIZED CARBON STEEL WITH  
NYLON COATED HEAD

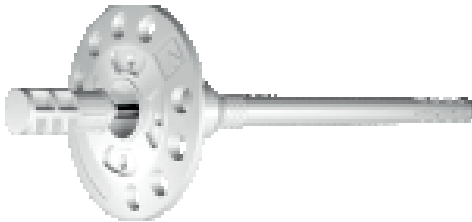
FIXING DIMENSIONS		
CODE	DIAMETER x LENGHT [MM]	PCS PER PACKAGE
TFIX-8P-095	8x95	200
TFIX-8P-115	8x115	200
TFIX-8P-135	8x135	200
TFIX-8P-155	8x155	200
TFIX-8P-175	8x175	200
TFIX-8P-195	8x195	200
TFIX-8P-215	8x215	200

INSULANT	TFIX-8P
EPS	•
XPS	•
MINERAL WOOL	•
LAMELLA	

SUBSTRATE	TFIX-8P
A	•
B	•
C	•
D	•
E	•

# KOELNER / RAWLPLUG: TFIX-8M

HAMMER-IN FACADE FIXING



TECHNICAL DATA

HOLE DIAMETER  
WASHER DIAMETER  
EUROPEAN TECHNICAL APPROVAL  
PLUG MATERIAL  
PIN TYPE AND MATERIAL

TFIX-8M

8 mm  
60 mm  
ETA-07/0336  
PP  
1 GALVANIZED CARBON STEEL  
WITH NYLON COATED HEAD

FIXING DIMENSIONS					
CODE	DIAMETER x LENGHT [MM]	PCS PER PACKAGE	CODE	DIAMETER x LENGHT [MM]	PCS PER PACKAGE
TFIX-8M-095	8x95	200	TFIX-8M-295	8x295	100
TFIX-8M-115	8x115	200			
TFIX-8M-135	8x135	200			
TFIX-8M-155	8x155	200			
TFIX-8M-175	8x175	200			
TFIX-8M-195	8x195	200			
TFIX-8M-215	8x215	100			
TFIX-8M-235	8x235	100			
TFIX-8M-255	8x255	100			
TFIX-8M-275	8x275	100			

INSULANT	TFIX-8M
EPS BOARDS	•
XPS BOARDS	•
MINERAL WOOL	•
LAMELLA	•

SUBSTRATE	TFIX-8M
A	•
B	•
C	•
D	
E	

# KOELNER / RAWLPLUG: TFIX-8S

## UNIVERSAL SCREW-IN WALL FIXING



### TECHNICAL DATA

HOLE DIAMETER  
WASHER DIAMETER  
EUROPEAN TECHNICAL APPROVAL  
PLUG MATERIAL  
PIN TYPE AND MATERIAL

### TFIX-8S

8 mm  
60 mm  
ETA-11/1044  
PP  
GALVANIZED CARBON STEEL WITH PA  
HEAD REINFORCED WITH GLASS FIBRE

FIXING DIMENSIONS					
CODE	DIAMETER x LENGHT [MM]	PCS PER PACKAGE	CODE	DIAMETER x LENGHT [MM]	PCS PER PACKAGE
TFIX-8S-115	8x115	100	TFIX-8S-335	8x335	100
TFIX-8S-135	8x135	100	TFIX-8S-355	8x355	100
TFIX-8S-155	8x155	100	TFIX-8S-375	8x375	100
TFIX-8S-175	8x175	100	TFIX-8S-395	8x395	100
TFIX-8S-195	8x195	100	TFIX-8S-415	8x415	50
TFIX-8S-215	8x215	100	TFIX-8S-435	8x435	50
TFIX-8S-235	8x235	100	TFIX-8S-455	8x455	50
TFIX-8S-255	8x255	100			
TFIX-8S-275	8x275	100			
TFIX-8S-295	8x295	100			

INSULANT	TFIX-8S
EPS BOARDS	•
XPS BOARDS	•
MINERAL WOOL	•
LAMELLA	•

SUBSTRATE	TFIX-8S
A	•
B	•
C	•
D	•
E	•

# KOELNER / RAWLPLUG: KI-10N

## UNIVERSAL HAMMER - IN WALL FIXING



### TECHNICAL DATA

HOLE DIAMETER  
WASHER DIAMETER  
EUROPEAN TECHNICAL APPROVAL  
PLUG MATERIAL  
PIN TYPE AND MATERIAL

### KI-10N

10 mm  
60 mm  
ETA-07/0221  
PP  
STTEL NAIL ENABLES EXPANSION  
OF THE PLUG

FIXING DIMENSIONS		
CODE	DIAMETER x LENGHT [MM]	PCS PER PACKAGE
KI-140N	10x140	250
KI-160N	10x160	250
KI-180N	10x180	250
KI-200N	10x200	250
KI-220N	10x220	250
KI-260N	10x260	250
KI-300N	10x300	250

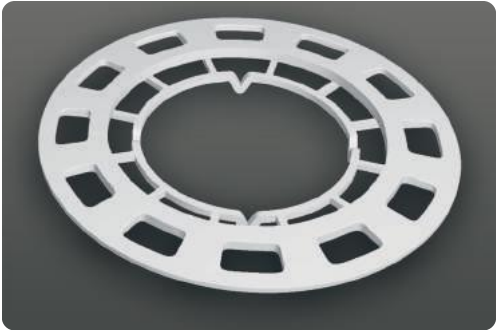
INSULANT	KI-10N
EPS	•
XPS	•
MINERAL WOOL	•
LAMELLA	

SUBSTRATE	KI-10N
A	
B	•
C	•
D	•
E	•



# KOELNER / RAWLPLUG: KWL-90

SUPPORT WASHER FOR FIXING MINERAL WOOL AND MW LAMELLA



## TECHNICAL DATA

WASHER DIAMETER
FIXING TYPE
PLUG DIAMETER
WASHER MATERIAL
EUROPEAN TECHNICAL APPROVAL
PRODUCT CODE
PCS PER PACKAGE

## KWL-90

90 mm	
TFIX, KI	
8 mm or 10 mm	
PP	nylon (PA)
ETA-07/0291	07/0221
KWL-090-PP	KWL-090
200	200

### USE:

Use support washers with fixings to fix mineral wool lamella with horizontally-oriented fibres. Large clamping area of the washer provides pull through resistance. Support washers perfectly complete any type of mineral wool fixings.

SUBSTRATE	KWL-90
DEPENDS ON THE FIXING	

INSULANT	KWL-90
EPS	
XPS	
MINERAL WOOL	•
LAMELLA	•

# KOELNER / RAWLPLUG: KWL-140

SUPPORT WASHER FOR FIXING MINERAL WOOL AND MW LAMELLA



## TECHNICAL DATA

WASHER DIAMETER
FIXING TYPE
PLUG DIAMETER
WASHER MATERIAL
EUROPEAN TECHNICAL APPROVAL
PRODUCT CODE
PCS PER PACKAGE

## KWL-140

140 mm	
TFIX, KI	
8 mm or 10 mm	
PP	nylon (PA)
ETA-07/0291	07/0221
KWL-140-PP	KWL-140
200	200

### USE:

Use support washers with fixings to fix mineral wool lamella with horizontally-oriented fibres. Large clamping area of the washer provides pull through resistance. Support washers perfectly complete any type of mineral wool fixings.

SUBSTRATE	KWL-140
DEPENDS ON THE FIXING	

INSULANT	KWL-140
EPS	
XPS	
MINERAL WOOL	•
LAMELLA	•

## EJOT: EJOTHERM STR U 2G

UNIVERSAL SCREW-IN ANCHOR FOR COUNTERSUNK AND SURFACE FIXED INSTALLATION



### TECHNICAL DATA

HOLE DIAMETER  
WASHER DIAMETER  
EUROPEAN TECHNICAL APPROVAL  
PLUG MATERIAL  
PIN TYPE AND MATERIAL

### EJOTHERM STR U 2G

8 mm  
60 mm  
ETA-04/0023  
PE  
STAINLESS OR GALVANIZED STEEL SCREW,  
PRE-MOUNTED FOR QUICK INSTALLATION  
(DOUBLE THREAD)

FIXING DIMENSIONS					
CODE	DIAMETER x LENGHT (MM)	PCS PER PACKAGE	CODE	DIAMETER x LENGHT (MM)	PCS PER PACKAGE
ejotherm STR U 2G 115	8x115	100	ejotherm STR U 2G 315	8x315	100
ejotherm STR U 2G 135	8x135	100	ejotherm STR U 2G 335	8x335	100
ejotherm STR U 2G 155	8x155	100	ejotherm STR U 2G 355	8x355	100
ejotherm STR U 2G 175	8x175	100	ejotherm STR U 2G 375	8x375	100
ejotherm STR U 2G 195	8x195	100	ejotherm STR U 2G 395	8x395	100
ejotherm STR U 2G 215	8x215	100	ejotherm STR U 2G 415	8x415	100
ejotherm STR U 2G 235	8x235	100	ejotherm STR U 2G 435	8x435	100
ejotherm STR U 2G 255	8x255	100	ejotherm STR U 2G 455	8x455	100
ejotherm STR U 2G 275	8x275	100			
ejotherm STR U 2G 295	8x295	100			

INSULANT	STR U 2G
EPS	•
XPS	•
MINERAL WOOL	•
LAMELLA	•

SUBSTRATE	STR U 2G
A	•
B	•
C	•
D	•
E	•

## EJOT: EJOT H3

UNIVERSAL HAMMER-IN FIXING WITH PLASTIC PIN AND FLEXIBLE TELESCOPIC SUPPORT WASHER



### TECHNICAL DATA

HOLE DIAMETER  
WASHER DIAMETER  
EUROPEAN TECHNICAL APPROVAL  
PLUG MATERIAL  
PIN TYPE AND MATERIAL

### EJOT H3

8 mm  
60 mm  
ETA-14/0130  
PP  
NAIL MADE OF PP REINFORCED WITH GLASS FIBRE  
ENABLING EXPANSION OF THE PLUG

FIXING DIMENSIONS		
CODE	DIAMETER x LENGHT (MM)	PCS PER PACKAGE
EJOT H3 095	8x95	200
EJOT H3 115	8x115	200
EJOT H3 135	8x135	200
EJOT H3 155	8x155	200
EJOT H3 175	8x175	200
EJOT H3 195	8x195	100
EJOT H3 215	8x215	100
EJOT H3 235	8x235	100

INSULANT	EJOT H3
EPS	•
XPS	•
MINERAL WOOL	
LAMELLA	

SUBSTRATE	EJOT H3
A	•
B	•
C	•
D	
E	

EJOT: EJOT H4

UNIVERSAL HAMMER-IN FIXING



TECHNICAL DATA

FIXING DIAMETER  
WASHER DIAMETER  
EUROPEAN TECHNICAL APPROVAL  
PLUG MATERIAL  
PIN TYPE AND MATERIAL

EJOT H4 ECO

8 mm  
60 mm  
ETA-11/0192  
PE  
GALVANIZED CARBON STEEL  
WITH PA HEAD

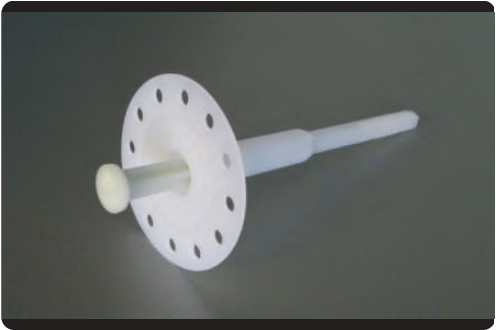
FIXING DIMENSIONS		
CODE	DIAMETER x LENGHT (MM)	PCS PER PACKAGE
EJOT H4 ECO 155	8x155	100
EJOT H4 ECO 175	8x175	100
EJOT H4 ECO 195	8x195	100
EJOT H4 ECO 215	8x215	100
EJOT H4 ECO 235	8x235	100
EJOT H4 ECO 255	8x255	100
EJOT H4 ECO 275	8x275	100
EJOT H4 ECO 295	8x95	100

INSULANT	EJOT H4
EPS	•
XPS	•
MINERAL WOOL	•
LAMELLA	•

SUBSTRATE	EJOT H4
A	•
B	•
C	•
D	•
E	•

EJOT: EJOT H1 ECO

UNIVERSAL HAMMER-IN FIXING



TECHNICAL DATA

HOLE DIAMETER  
WASHER DIAMETER  
EUROPEAN TECHNICAL APPROVAL  
PLUG MATERIAL  
PIN TYPE AND MATERIAL

H1 ECO

10 mm  
60 mm  
AT-15-3234/2009  
PE  
GALVANIZED STEEL PINS  
PA COATED HEAD

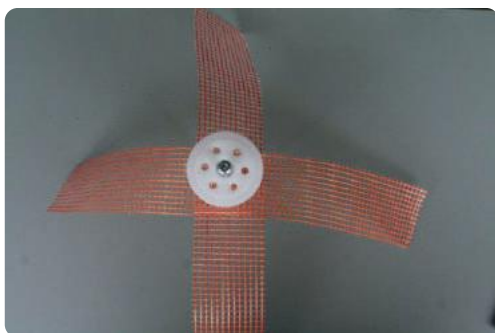
FIXING DIMENSIONS					
CODE	DIAMETER x LENGHT (MM)	PCS PER PACKAGE	CODE	DIAMETER x LENGHT (MM)	PCS PER PACKAGE
EJOT H1 ECO 095	8x95	100	EJOT H1 ECO 295	8x295	100
EJOT H1 ECO 115	8x115	100			
EJOT H1 ECO 135	8x135	100			
EJOT H1 ECO 155	8x155	100			
EJOT H1 ECO 175	8x175	100			
EJOT H1 ECO 195	8x195	100			
EJOT H1 ECO 215	8x215	100			
EJOT H1 ECO 235	8x235	100			
EJOT H1 ECO 255	8x255	100			
EJOT H1 ECO 275	8x275	100			

INSULANT	EJOT H1 ECO
EPS	•
XPS	•
MINERAL WOOL	•
LAMELLA	•

SUBSTRATE	EJOT H1 ECO
A	•
B	•
C	•
D	
E	

# SOLTHERM CROSS KNOTT SYSTEM

BOLIX THERMAL INSULATION CROSS FASTENING (PATENT PROTECTED)



## TECHNICAL DATA

HOLE DIAMETER  
SUPPORT WASHER DIAMETER  
EUROPEAN TECHNICAL APPROVAL  
PLUG MATERIAL  
PIN TYPE AND MATERIAL

## EJOTHERM STR U 2G

8 mm  
60; 400 mm mesh strips  
ETA-04/0023  
PE  
STAINLESS OR GLVANIZED STEEL SCREW,  
PRE-MOUNTED FOR QUICK INSTALLATION  
(DOUBLE THREAD)

## TFIX-8S

8 mm  
60 mm  
ETA-11/1044  
PP  
GALVANIZED CARBON STEEL  
WITH PA HEAD REINFORCED  
WITH GLASS FIBRE

### FIXING DIMENSIONS

CODE	DIAMETER x LENGHT (MM)	PCS PER PACKAGE	CODE	DIAMETER x LENGHT (MM)	PCS PER PACKAGE
ejotherm STR U 2G 115	8x115	100	ejotherm STR U 2G 315	8x315	100
ejotherm STR U 2G 135	8x135	100	ejotherm STR U 2G 335	8x335	100
ejotherm STR U 2G 155	8x155	100	ejotherm STR U 2G 355	8x355	100
ejotherm STR U 2G 175	8x175	100	ejotherm STR U 2G 375	8x375	100
ejotherm STR U 2G 195	8x195	100	ejotherm STR U 2G 395	8x395	100
ejotherm STR U 2G 215	8x215	100	ejotherm STR U 2G 415	8x415	100
ejotherm STR U 2G 235	8x235	100	ejotherm STR U 2G 435	8x435	100
ejotherm STR U 2G 255	8x255	100	ejotherm STR U 2G 455	8x455	100
ejotherm STR U 2G 275	8x275	100			
ejotherm STR U 2G 295	8x295	100			

### INSULANT

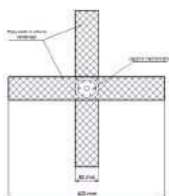
### STR U 2G

EPS	•
XPS	•
MINERAL WOOL	•
LAMELLA	•

### SUBSTRATE

### STR U 2G

A	•
B	•
C	•
D	•
E	•



### FIXING DIMENSIONS

CODE	DIAMETER x LENGHT (MM)	PCS PER PACKAGE	CODE	DIAMETER x LENGHT (MM)	PCS PER PACKAGE
TFIX-8S-115	8x115	100	TFIX-8S-335	8x335	100
TFIX-8S-135	8x135	100	TFIX-8S-355	8x355	100
TFIX-8S-155	8x155	100	TFIX-8S-375	8x375	100
TFIX-8S-175	8x175	100	TFIX-8S-395	8x395	100
TFIX-8S-195	8x195	100	TFIX-8S-415	8x415	50
TFIX-8S-215	8x215	100	TFIX-8S-435	8x435	50
TFIX-8S-235	8x235	100	TFIX-8S-455	8x455	50
TFIX-8S-255	8x255	100			
TFIX-8S-275	8x275	100			
TFIX-8S-295	8x295	100			

### INSULANT

### TFIX-8S

EPS BOARDS	•
XPS BOARDS	•
MINERAL WOOL	•
LAMELLA	•

### SUBSTRATE

### TFIX-8S

A	•
B	•
C	•
D	•
E	•



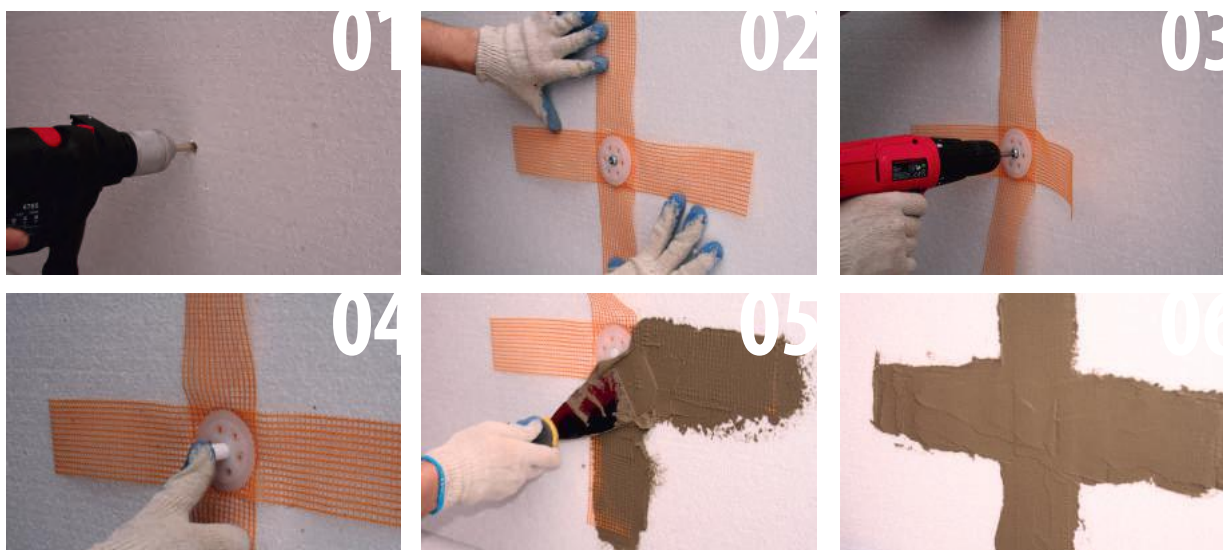
## PATTENTED CROSS FIXING SYSTEM

'Cross-knot' is a unique ETICS solution, which combines full forces of the reinforcement and insulation material. In this solution a special mechanical fixing goes through two crossed fibreglass mesh strips to provide extreme resistance to wind loads. A standard fixing provides reinforcement area restricted to the support washer area, but in KWM this area has been extended since the crossed strips are both attached to insulation material and fixed to the reinforcement. Moreover, the mechanical fixing used in KWM, has the capability to mechanically hold down the insulation due to screw-in fixing which can be tightened. It ensures full control over efficient installation of each fixing and eliminates the effects of dynamic action, occurring when the the pin is hammered in, since the hammer may damage the anchoring area, especially when the substrate is weak. This is crucial for retrofit insulation, where it is necessary to obtain optimal stress in the insulation structure (fixing strength basically relies on mechanical fixing). KWM has been designed to fasten thermal insulation (mineral wool or EPS foam) in solutions requiring enhanced durability and absolute reliability of the mechanical fixing.

It is recommended for fixing the thermal insulation:

- of high thickness
- on gable walls or other with no window openings
- on walls of high buildings
- on high wind suction load areas
- on weak substrates
- when heavy cladding (e.g. stone) is applied to thermal insulation
- when thermal insulation is applied to the existing one (DOUBLETHERM technique)

If applied correctly, KWM makes the façade practically fully resistant to damaging wind forces.



VIDEO

## EJOT: VT-90

### SUPPORT WASHER FOR FIXING MINERAL WOOL AND MW LAMELLA



#### TECHNICAL DATA

WASHER DIAMETER
FIXING TYPE
PLUG DIAMETER
WASHER MATERIAL
EUROPEAN TECHNICAL APPROVAL
PRODUCT CODE
PCS PER PACKAGE

#### EJOT VT-90

90 mm
STR U, NTK U
8 mm or 10 mm
PE
ETA-07/0026
EJOT VT-90
100

#### USE:

Use support washers with fixings to fix mineral wool lamella with horizontally-oriented fibres. Large clamping area of the washer provides pull through resistance. Support washers perfectly complete any type of mineral wool fixings.

SUBSTRATE	EJOT VT-90
DEPENDS ON THE FIXING	

INSULANT	EJOT VT-90
EPS	
XPS	
MINERAL WOOL	•
LAMELLA	•

## EJOT: SBL 140 PLUS

### SUPPORT WASHER FOR FIXING MINERAL WOOL AND MW LAMELLA



#### TECHNICAL DATA

WASHER DIAMETER
FIXING TYPE
PLUG DIAMETER
WASHER MATERIAL
EUROPEAN TECHNICAL APPROVAL
PRODUCT CODE
PCS PER PACKAGE

#### EJOT SBL 140 PLUS

140 mm
STR U, NTK U
8 mm or 10 mm
PE
ETA-07/0026
EJOT SBL 140 PLUS
100

#### USE:

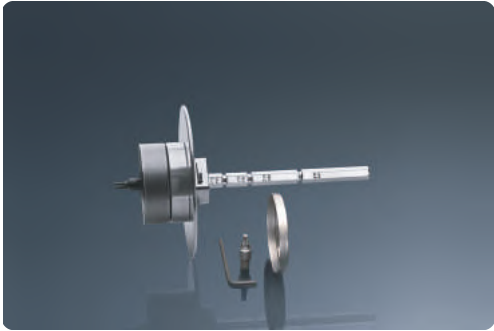
Use support washers with fixings to fix mineral wool lamella with horizontally-oriented fibres. Large clamping area of the washer provides pull through resistance. Support washers perfectly complete any type of mineral wool fixings.

SUBSTRATE	SBL 140 PLUS
DEPENDS ON THE FIXING	

INSULANT	SBL 140 PLUS
EPS	
XPS	
MINERAL WOOL	•
LAMELLA	•

# EJOT: EJOTHERM STR-TOOL 2G Ø65MM

SPECIALY DEVELOPED TOOL FOR COUNTERSUNK INSTALLATION OF EJOTHERM STR U 2G



### TECHNICAL DATA

CUTTER DIAMETER  
FIXING TYPE  
PRODUCT CODE  
PCS PER PACKAGE  
PRICE [EUR]

### EJOTHERM STR TOOL 2G

65 mm  
ejotherm STR  
ejotherm STR-tool 2G  
1  
-

FIXING DIMENSIONS	
CODE	NO. OF UNITS PACKAGE
EJOTHERM®STR-TOOL 2G S	1
EJOTHERM®SPARE PARTS STR	1
EJOTHER SDS-PLUS ADAPTER STR-TOOL 2G S	1
EJOTHERM SW 10x160 HEXAGON ADAPTER TO STR-TOOL 2G S	1

INSULANT	EJOT STR-TOOL 2G
EPS	•
XPS	•
MINERAL WOOL	•
LAMELLA	•

SUBSTRATE	EJOT STR-TOOL 2G
DEPENDS ON THE FIXING	

### USE:

- Tool for cutting into foam prior to foam or mineral wool cap installation
- specially developed tool for countersunk installation of ejotherm STR U 2G
  - suitable for both ejotherm STR U and ejotherm STR H
  - adjustable for all anchor length
  - easy scaling for adjustment to the required anchor length
  - for reliable and easy installation according to the EJOT STR principle
  - robust design for long service life
  - quickly replaceable wear parts
  - kit consists of: ejotherm STR-tool 2G, additional cutting sheets, offset screw driver as well as bits for all applications

# EJOT: EJOTHERM STR Ø65MM

EPS FOAM CAP



### TECHNICAL DATA

CUTTER DIAMETER  
FIXING TYPE  
PRODUCT CODE  
PCS PER PACKAGE

### EJOTHERM STR WHITE

65 mm  
EJOT for EPS  
ejotherm®cap STR EPS - white\*  
100

### EJOTHERM STR GREY

65 mm  
EJOT for EPS  
ejotherm®cap STR EPS - graphite\*  
100

### USE:

- Installation of thermal insulation fixings with foam caps:
- facilitates and quickens surface preparation prior to finish coat applications
  - enables the use of 20mm shorter fixings when compared to fixing installation without foam cap
  - eliminates thermal bridges

INSULANT	EJOTHERM STR
EPS	•
XPS	•
MINERAL WOOL	
LAMELLA	

SUBSTRATE	EJOTHERM STR
DEPENDS ON THE FIXING	

## EJOT: EJOTHERM STR Ø65MM

### CAP OF MINERAL WOOL OR MW LAMELLA



#### TECHNICAL DATA

CUTTER DIAMETER  
FIXING TYPE  
PRODUCT CODE  
PCS PER PACKAGE

#### EJOTHERM STR MW

65 mm  
EJOT for MW  
ejotherm® cap STR MIWO\*  
100

#### USE:

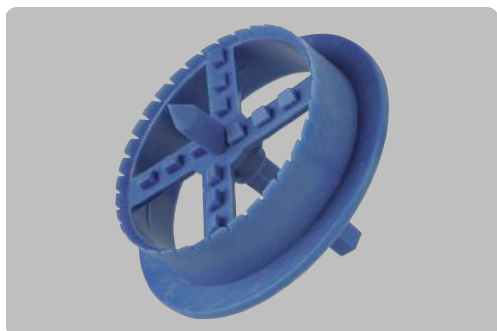
Installation of thermal insulation fixings with mineral wool caps:  
- facilitates and quickens surface preparation prior to finish coat applications  
- enables the use of 20mm shorter fixings when compared to fixing installation without foam cap

SUBSTRATE	EJOTHERM STR MW
DEPENDS ON THE FIXING	

INSULANT	EJOTHERM STR MW
EPS	•
XPS	•
MINERAL WOOL	
LAMELLA	

## EJOT: DISC CUTTER FOR POLYSTYRENE Ø70MM

### PLASTIC DISC CUTTER FOR POLYSTYRENE



#### TECHNICAL DATA

CUTTER DIAMETER  
FIXING TYPE  
PRODUCT CODE  
PCS PER PACKAGE

#### CUTTER Ø70

70 mm  
ejotherm for EPS  
ejotherm STR-renovation cutter  
1

#### USE:

Tool for cutting into foam prior to foam cap installation.

SUBSTRATE	CUTTER Ø70
DEPENDS ON THE FIXING	

INSULANT	CUTTER Ø70
EPS	•
XPS	•
MINERAL WOOL	
LAMELLA	

## EJOT: EPS FOAM CAP Ø70MM

### EPS FOAM CAP



#### TECHNICAL DATA

CUTTER DIAMETER  
FIXING TYPE  
PRODUCT CODE  
PCS PER PACKAGE

#### CAP Ø70

70 mm  
ejotherm STR  
ejotherm® cap STR\*  
500

#### USE:

Installation of thermal insulation fixings with foam caps:  
- facilitates and quickens surface preparation prior to finish coat applications  
- enables the use of 20mm shorter fixings when compared to fixing installation without foam cap

SUBSTRATE	CAP Ø70
DEPENDS ON THE FIXING	

INSULANT	CAP Ø70
EPS	•
XPS	•
MINERAL WOOL	
LAMELLA	

# WKREȚ-MET: LFM

HAMMER-IN SCREW-IN FIXING WITH METAL PIN AND EXTENDED EXPANSION ZONE



## TECHNICAL DATA

HOLE DIAMETER  
WASHER DIAMETER  
EUROPEAN TECHNICAL APPROVAL  
PLUG MATERIAL  
PIN TYPE AND MATERIAL

## LMFØ8 LMFØ10

8 mm 10 mm  
60 mm 60 mm  
ETA-06/0080 ETA-06/0105  
POLYPROPYLENE  
1 GALVANIZED CARBON STEEL  
WITH NYLON COATED HEAD

FIXING					
CODE	DIAMETER x LENGHT [MM]	PCS PER PACKAGE	CODE	DIAMETER x LENGHT [MM]	PCS PER PACKAGE
LFM8100(200)	8x100	200	LFM10260(200)	10x260	100
LFM8120(200)	8x120	200	LFM10300(200)	10x300	100
LFM8140(200)	8x140	200			
LFM8160(200)	8x160	200			
LFM8180(200)	8x180	200			
LFM8200(200)	8x200	200			
LFM10140(200)	10x140	200			
LFM10160(200)	10x160	200			
LFM10180(200)	10x180	200			
LFM10200(200)	10x200	200			
LFM10220(200)	10x220	100			

INSULANT	LTXØ8	LTXØ10
EPS	•	•
XPS	•	•
MINERAL WOOL	•	•
LAMELLA	•	•

SUBSTRATE	LTXØ8	LTXØ10
A	•	•
B	•	•
C	•	•
D	•	•
E	•	•
F	•	•

# WKREȚ-MET: LTX

UNIVERSAL HAMMER-IN FIXING WITH PLASTIC PIN



## TECHNICAL DATA

HOLE DIAMETER  
WASHER DIAMETER  
EUROPEAN TECHNICAL APPROVAL  
FIXING MATERIAL  
PIN TYPE AND MATERIAL

## LMFØ8 LMFØ10

8 mm 10 mm  
60 mm 60 mm  
ETA-09/0001 ETA-08/0172  
POLYPROPYLENE  
GLASS FIBRE REINFORCED POLYAMIDE

FIXING					
CODE	DIAMETER x LENGHT [MM]	PCS PER PACKAGE	CODE	DIAMETER x LENGHT [MM]	PCS PER PACKAGE
LTX08095(200)	8x95	200	LTX10140(200)	10x140	200
LTX08115(200)	8x115	200	LTX10160(200)	10x160	200
LTX08135(200)	8x135	200	LTX10180(200)	10x180	200
LTX08155(200)	8x155	200	LTX10200(200)	10x200	200
LTX08175(200)	8x175	200	LTX10220(100)	10x220	100
LTX08195(200)	8x195	200	LTX10260(100)	10x260	100
LTX10070(200)	10x70	200			
LTX10090(200)	10x90	200			
LTX10110(200)	10x110	200			
LTX10120(200)	10x120	200			

INSULANT	LTXØ8	LTXØ10
EPS	•	•
XPS	•	•
MINERAL WOOL		
LAMELLA		

SUBSTRATE	LTXØ8	LTXØ10
A	•	•
B	•	•
C	•	
D	•	•
E	•	•

## WKREŹ-MET: FIXPLUG

HAMMER-IN FIXING WITH PLASTIC PIN AND AND TELESCOPIC DESIGN SUPPORT WASHER



### TECHNICAL DATA

HOLE DIAMETER  
WASHER DIAMETER  
EUROPEAN TECHNICAL APPROVAL  
PLUG MATERIAL  
PIN TYPE AND MATERIAL

### FIXPLUGØ8 FIXPLUGØ10

8 mm 10 mm  
60 mm 60 mm  
ETA-11/0231 ETA-11/0231  
PE  
GLASS FIBRE REINFORCED POLYAMIDE

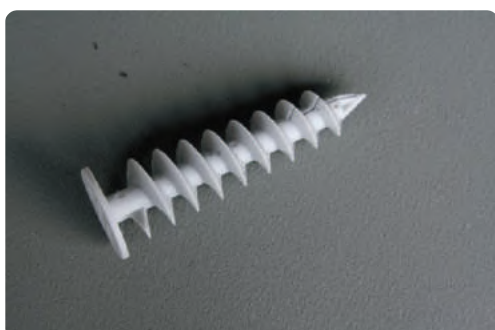
FIXING DIMENSIONS					
CODE	DIAMETER x LENGHT [MM]	PCS PER PACKAGE	CODE	DIAMETER x LENGHT [MM]	PCS PER PACKAGE
FIXPLUG08110	8x110	200	FIXPLUG10200(200)	10x200	200
FIXPLUG08130	8x130	200	FIXPLUG10220(100)	10x220	100
FIXPLUG08150	8x150	200	FIXPLUG10260(100)	10x260	100
FIXPLUG08170	8x170	200			
FIXPLUG08190	8x190	200			
FIXPLUG08210	8x210	100			
FIXPLUG10120(200)	10x120	200			
FIXPLUG10140(200)	10x140	200			
FIXPLUG10160(200)	10x160	200			
FIXPLUG10180(200)	10x180	200			

INSULANT	FIXPLUGØ8	FIXPLUGØ10
EPS	•	•
XPS	•	•
MINERAL WOOL		
LAMELLA		

SUBSTRATE	ŁTXØ8	ŁTXØ10
A	•	•
B	•	•
C	•	•
D		
E		

## WKREŹ-MET: WK-DS

SPIRAL FIXING



FIXING				
CODE	FIXING LENGHT	WASHER DIAMETER [MM]	SCREW DIAMETER [MM]	PCS PER PACKAGE
WK-DS 50	50	28	4.5	10
WK-DS 85	85	28	4.5	10

INSULANT	WK-DS
EPS	•
XPS	
MINERAL WOOL	
LAMELLA	

### USE:

For fixing light attachments (up to 5 kg/fixing) to polystyrene insulation.

## WKREŹ-MET: TDX-140

SUPPORT WASHER FOR FIXING MINERAL WOOL AND MW LAMELLA



### TECHNICAL DATA

WASHER DIAMETER  
FIXING TYPE  
PLUG DIAMETER  
WASHER MATERIAL  
EUROPEAN TECHNICAL APPROVAL  
PRODUCT CODE  
PCS PER PACKAGE

### TDX-140

140 mm  
ŁTX, ŁFM  
8mm or 10mm  
nylon (PA)  
ETA-08/0172  
TDX-140  
200

### USE:

Use support washers with fixings to fix mineral wool lamella with horizontally-oriented fibres. Large clamping area of the washer provides pull through resistance. Support washers perfectly complete any type of mineral wool fixings.

SUBSTRATE	TDX-140
DEPENDS ON THE FIXING	

INSULANT	TDX-140
EPS	
XPS	
MINERAL WOOL	•
LAMELLA	•



# WKREȚ-MET: TDX-90

SUPPORT WASHER FOR FIXING MINERAL WOOL AND MW LAMELLA



USE:

Use support washers with fixings to fix mineral wool lamella with horizontally-oriented fibres. Large clamping area of the washer provides pull through resistance. Support washers perfectly complete any type of mineral wool fixings.

TECHNICAL DATA

WASHER DIAMETER
FIXING TYPE
PLUG DIAMETER
WASHER MATERIAL
EUROPEAN TECHNICAL APPROVAL
PRODUCT CODE
PCS PER PACKAGE

TDX-90

90 mm
ŁTX, ŁFM
8mm or 10mm
PE
ETA-11/0281
TDX-90
200

SUBSTRATE	TDX-90
DEPENDS ON THE FIXING	

INSULANT	TDX-90
EPS	
XPS	
MINERAL WOOL	•
LAMELLA	•

# WKREȚ-MET: WK-FT Ø67MM

DISC CUTTER FOR POLYSTYRENE



TECHNICAL DATA

CUTTER DIAMETER
FIXING TYPE
PRODUCT CODE
PCS PER PACKAGE

WK-FT

67
wkreȚ-met for EPS
WK-FT
1

SUBSTRATE	WK-FT
DEPENDS ON THE FIXING	

INSULANT	WK-FT
EPS	•
XPS	•
MINERAL WOOL	
LAMELLA	

USE:

Tool for cutting into foam for foam cap installation.

# WKREȚ-MET: KS Ø67MM

EPS FOAM CAP



TECHNICAL DATA

CUTTER DIAMETER
FIXING TYPE
PRODUCT CODE
PCS PER PACKAGE

KS

67 mm
wkreȚ-met for EPS
KS
100

SUBSTRATE	KS
DEPENDS ON THE FIXING	

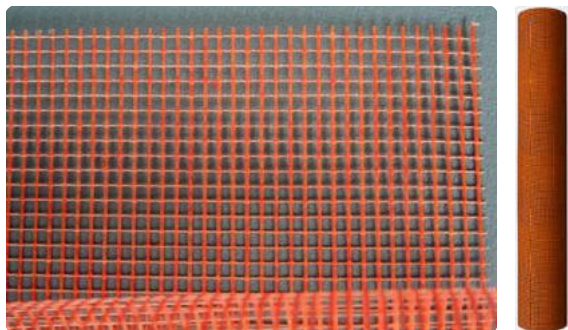
INSULANT	KS
EPS	•
XPS	•
MINERAL WOOL	
LAMELLA	

USE:

Installation of thermal insulation fixings with foam caps:  
- facilitates and quickens surface preparation prior to finish coat applications  
- enables the use of 20mm shorter fixings when compared to fixing installation without foam cap

# FIBREGLASS MESH

ALKALI RESISTANT FIBREGLASS MESH FOR REINFORCING BASE COAT WITHIN ETICS THERMAL INSULATION SYSTEMS



TECHNICAL DATA	SOLTHERM 158	DTA CERTIFIED FIBERGLASS MESH 160	BOLIX 174
MESH SIZE [MM]	3.9 x 4.0	4x4	3.8 x 3.2
WEIGHT [G]	158±8	160	174±8
WIDTH [CM]	100	100	100
ESTIMATED COVERAGE [M²/M²]	1.1	1.1	1.1
PACKAGE [M²]	50	50	50
TECHNICAL APPROVAL	ETA-13/0806		ETA-13/0806
PCS PER PACKAGE	1 Roll	1 Roll	1 Roll
COLOUR	Orange	White	Orange

# ARMOUR MESH

ALKALI RESISTANT FIBREGLASS MESH APPLIED WITH STANDARD MESH TO INCREASE IMPACT RESISTANCE OF ETICS THERMAL INSULATION SYSTEMS, IN BOLIX HD SYSTEM IN PARTICULAR



TECHNICAL DATA	BOLIX HD 335
MESH SIZE [MM]	4.7 x 5.6
WEIGHT [G/M²]	367±18
WIDTH [CM]	100
ESTIMATED COVERAGE [M²/M²]	1.0
PACKAGE [M²]	25
TECHNICAL APPROVAL	ETA-13/0806
PCS PER PACKAGE	1 Roll
COLOUR	Orange



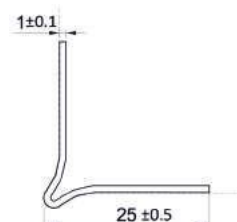
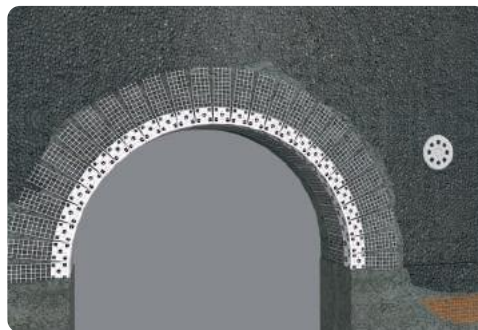
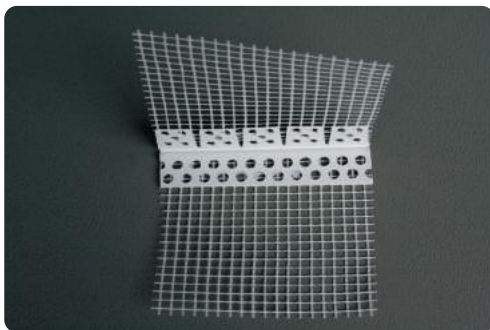




# PROFILES



## ARCHWAY CORNER BEAD

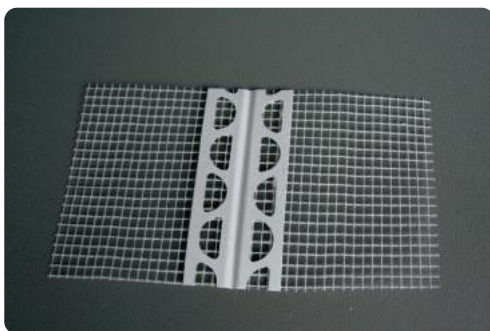


CODE	DIMENSION [MM]	MATERIAL	LENGTH [M]	PACKAGE [UNITS]
BX020	25x25x1 mesh 100x100	PVC	2.5	20

### CHARACTERISTICS:

- suitable for ETICS
- used to reinforce arch corners and produce any angles created by curved walls and archways
- protects edges against mechanical damage
- perforations on both sides assure excellent adhesion to finishing compound or adhesive
- easy to produce arches and curves by cutting mesh attached to the profile
- attached glass fibre mesh of weight 145 g/m<sup>2</sup>

## UNIVERSAL ANGLE BEAD

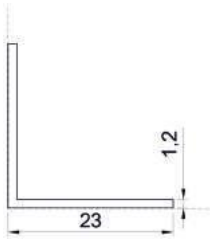
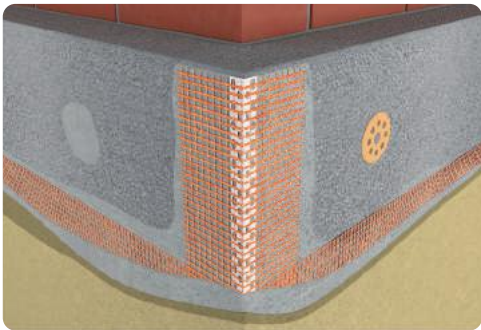
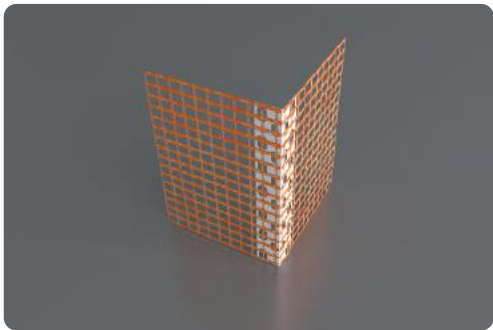


CODE	DIMENSION [MM]	MATERIAL	LENGTH [M]	PACKAGE [UNITS]
BX021	25x25x1 mesh 100x100	PVC	50	CARTON
BX022	25x25x1 mesh 100x100	PVC	25	CARTON

### CHARACTERISTICS:

- suitable for ETICS
- reinforces and provides aesthetic and true corners of more than 90°
- perfect as a corner, edge, door and window reveal protection against mechanical damage
- practical and easy to install
- comes in coils can be cut to size and no butt jointing of beads is necessary
- attached glass fibre mesh of weight 145 g/m<sup>2</sup>

# CORNER BEAD

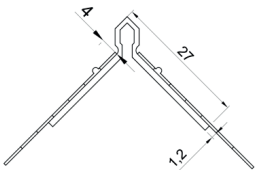
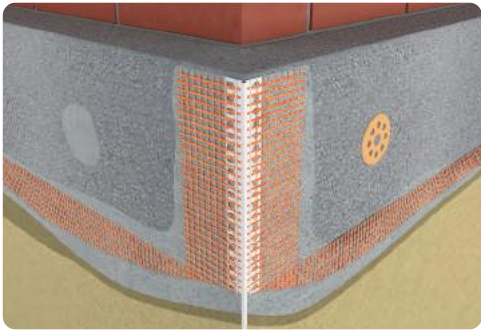
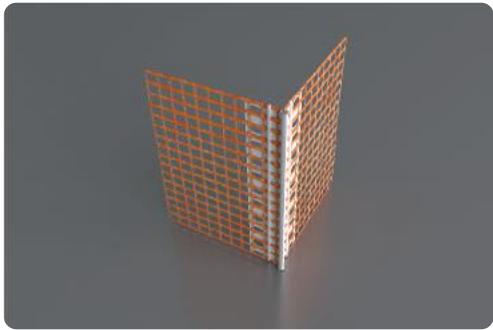


CODE	DIMENSION [MM]	MATERIAL	LENGHT [M]	PACKAGE [UNITS]
BX032	23x23 mesh 100x100	PVC	2.5	50
BX033	23x23 mesh 100x150	PVC	2.5	50
BX034	23x23 mesh 80x120	PVC	2.5	50
BX035	23x23 mesh 100x150	PVC	2.5	100
BX036	23x23 mesh 80x100	PVC	2.5	100

## CHARACTERISTICS:

- suitable for ETICS
- forms crisp sharp clean outside corners
- reinforces and protects corners and edges from mechanical damages
- perforated flanges
- increases compressive strength of the joints
- easy and quick to install
- attached glass fibre mesh of weight 145 g/m²

# CORNER BEAD WITH NOSE

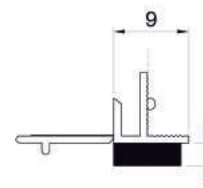
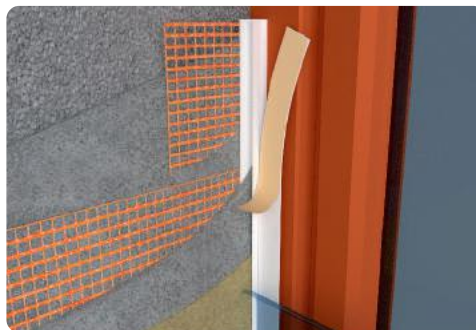
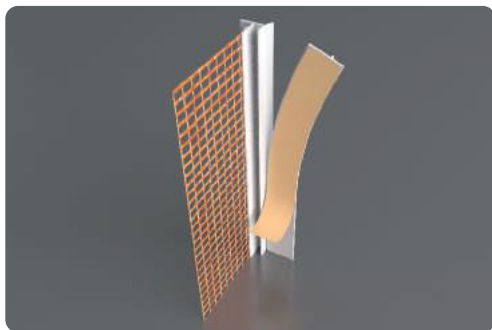


CODE	DIMENSION [MM]	MATERIAL	LENGHT [M]	PACKAGE [UNITS]
BX030	25x25x1 mesh 100x100	PVC	2	25
BX031	25x25x1 mesh 100x100	PVC	2.5	25

## CHARACTERISTICS:

- suitable for ETICS
- protects and reinforces edges and forms perfectly even, crisp and sharp corners
- applied to the edge and fixed as suitable for render thickness
- sharp nose facilitates render smoothing
- perfect for exposed locations
- easy and quick to install
- chemically stable, not reacting with plaster
- attached glass fibre mesh of weight 145 g/m²

## TRIMMING WINDOW PROFILE WITH REMOVABLE LEG

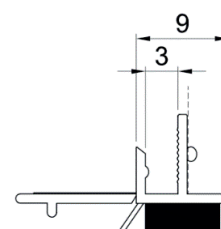
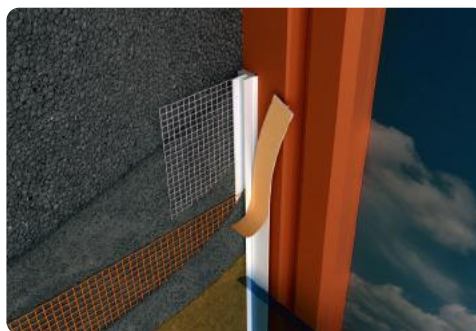
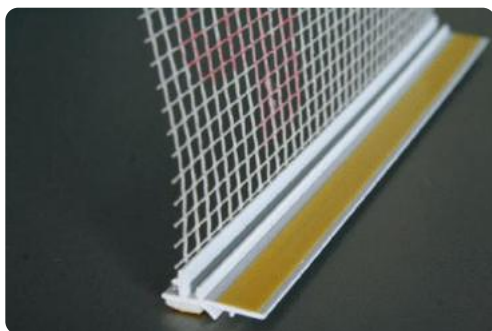


CODE	DIMENSION [MM]	MATERIAL	LENGTH [M]	PACKAGE [UNITS]
BX026	9	PVC	2.4	30

### CHARACTERISTICS:

- suitable for ETICS
- provides an aesthetic finish for ETICS and a joining between external wall insulation systems and window/door frames
- shortens finish works, facilitates render application - even application
- sealing foam tape prevents crack formation and separation of the ETICS thermal insulation and the window frame, particularly at PVC windows
- forms durable and tight joint between insulation top coats and the window frame - damp and pollution penetration is eliminated
- facilitates window and glass protection against scratching and soiling during ETICS application
- double-sided self-adhesive removable leg enables masking foil application to the profile
- attached glass fibre mesh of weight 145 g/m<sup>2</sup>

## TRIMMING WINDOW PROFILE WITH SEALING TAPE AND REMOVABLE LEG

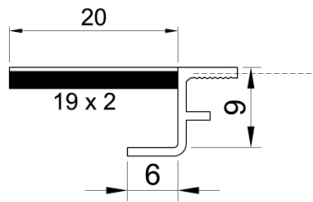
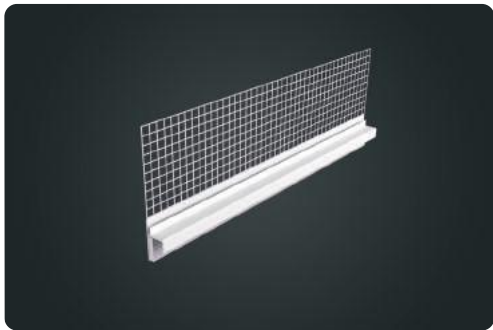


CODE	DIMENSION [MM]	MATERIAL	LENGTH [M]	PACKAGE [UNITS]
BX056	channel 6 mesh 100x100	PVC	2.6	50
BX057	channel 6 mesh 100x100	PVC	3	50

### CHARACTERISTICS:

- suitable for ETICS
- prevents crack formation at the joint between window reveal and render
- the sealing tape which additionally seals the joint with window/door reveal
- removable leg enables masking foil application and easy foil removal by breaking off the removable leg.
- window and glass protection against scratching and soiling during application operations

# SILL AND REVEAL CONNECTION PROFILE

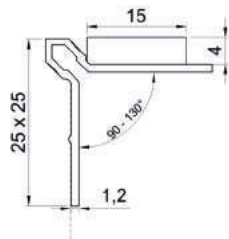
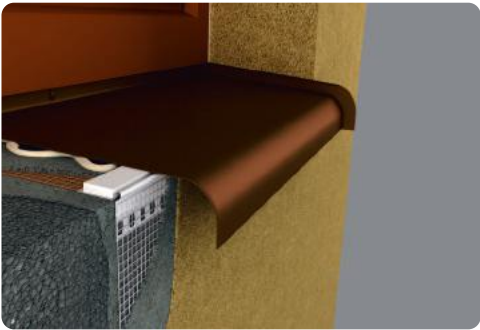
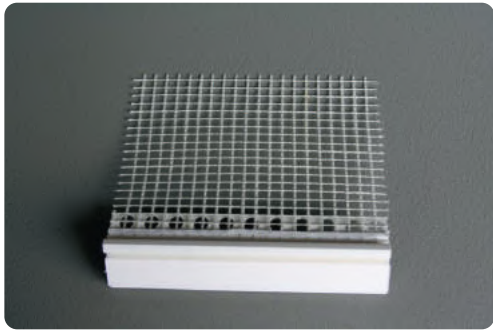


CODE	DIMENSION [MM]	MATERIAL	LENGHT [M]	PACKAGE [UNITS]
BX053	6 mesh 100	PVC	2	30

## CHARACTERISTICS:

- suitable for ETICS
- allows water to drain away from the window reveal and prevents dripping of water from window sill through the joint under stucco
- designed to match metal sills with side lips
- provides sharp crisp and aesthetic window corners
- forms a strong control joint between the sill and render coating to prevent crack formation in the window frame
- apply a thin coat of MS polymer sealant to the side edge of the sill
- attached glass fibre mesh of weight 145 g/m<sup>2</sup>
- product protected by a patent

# UNDER WINDOW SILL PROFILE



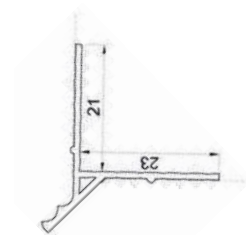
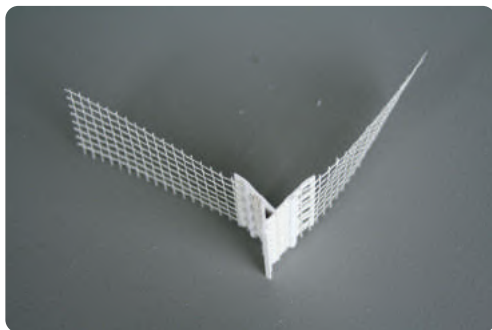
CODE	DIMENSION [MM]	MATERIAL	LENGHT [M]	PACKAGE [UNITS]
BX037	25x25	PVC	2	25

## CHARACTERISTICS:

- suitable for ETICS
- provides a strong and uniform control joint between the sill and stucco
- 4mm PE foam tape eliminates crack formation between the sill and stucco by relieving stress caused by stucco shrinkage and thermal movement
- provides sharp crisp and aesthetic window corners
- can be flexed to fit the angle between the sill and wall
- adjustable flanges to fit angles between 90 - 130°
- facilitates sill fixing by attaching it to the foam, which provides damp proof control joint
- easy and quick to install
- attached glass fibre mesh of weight 145 g/m<sup>2</sup>



## DRIP EDGE PROFILE

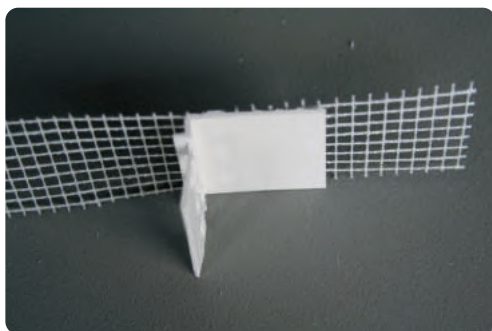


CODE	DIMENSION [MM]	MATERIAL	LENGTH [M]	PACKAGE [UNITS]
BX023	21x23 mesh 100x100	PVC	2	25

### CHARACTERISTICS:

- suitable for ETICS
- element of the set for ETICS base
- reinforces and provides sharp crisp and aesthetic window and bottom edges
- allows water to move away from the building façade e.g. balconies, ledges, terraces, top jambs, base course
- easy and quick to install
- attached glass fibre mesh of weight 145 g/m<sup>2</sup>

## STARTER BEAD



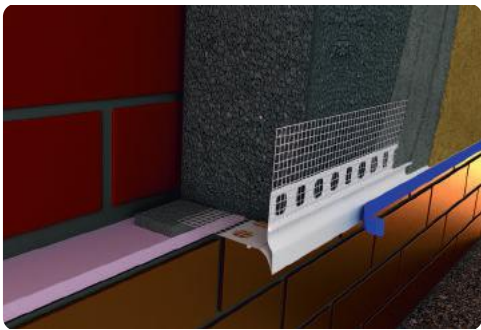
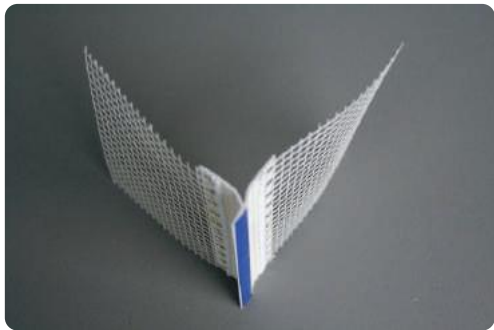
CODE	DIMENSION [MM]	MATERIAL	LENGTH [M]	PACKAGE [UNITS]
BX025	30x40 mesh 300	PVC	2	20

### CHARACTERISTICS:

- used to protect the foundation and bottom edge of the building in ETICS thermal insulation systems
- universal starter bead suitable for any insulant thickness
- eliminates thermal bridges and oxidation of insulation material
- connection with the thermal insulation with the use of integrated fibreglass mesh
- replaces aluminium/steel base profile
- easy to install
- reinforces and provides aesthetic wall bottom edges
- channel moisture out and away from the building
- attached glass fibre mesh of weight 145 g/m<sup>2</sup>



# EXTENDED DRIP EDGE PROFILE WITH MASKING BAND

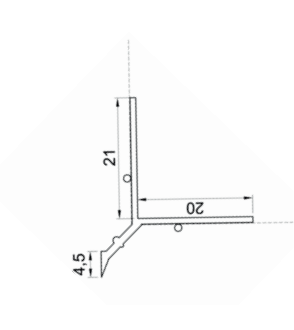
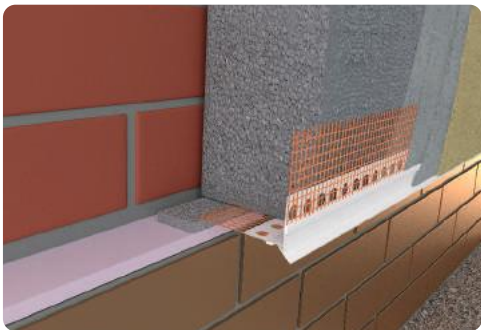
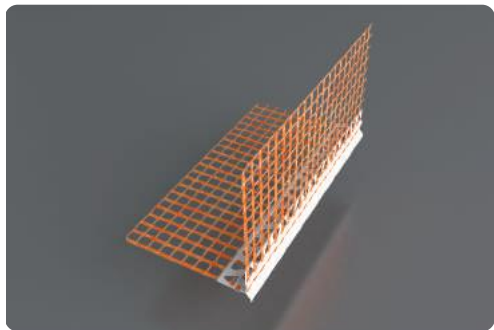


CODE	DIMENSION [MM]	MATERIAL	LENGHT [M]	PACKAGE [UNITS]
BX027	18x18 mesh 100x100	PVC	2.5	25
BX028	18x18 mesh 100x100	PVC	2	25

## CHARACTERISTICS:

- suitable for ETICS
- prevents water to run under the thermal insulation e.g. door/window top jambs, balconies, ledges, terraces, base courses etc.
- masking band protected
- protects edges against mechanical damage
- provides a finished and attractive look by forming a crisp and neat edge at building base
- easy and quick to install
- attached glass fibre mesh of weight 145 g/m²

# DRIP EDGE PROFILE

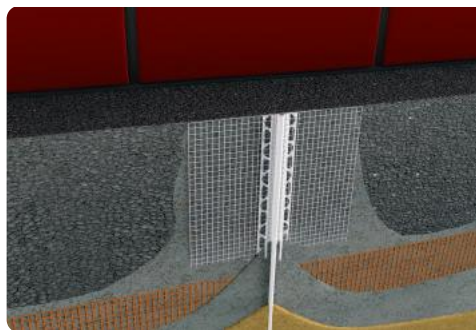
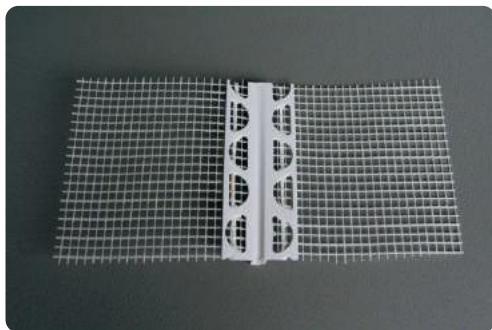


CODE	DIMENSION [MM]	MATERIAL	LENGHT [M]	PACKAGE [UNITS]
BX024	20x20 mesh 110x110	PVC	2	25
BX029	20x20 mesh 110x110	PVC	2.5	25

## CHARACTERISTICS:

- suitable for ETICS
- prevents flow of rain water down to the façade
- prevents water ingress under stucco e.g. door/window top jambs, balconies, ledges, terraces, base courses etc.
- protects edges against mechanical damage
- provides a finished and attractive look by forming a crisp and neat edge at building base
- easy and quick to install
- attached glass fibre mesh of weight 145 g/m²

## MOVEMENT BEAD

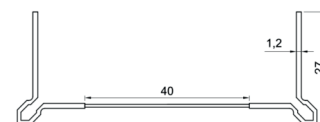
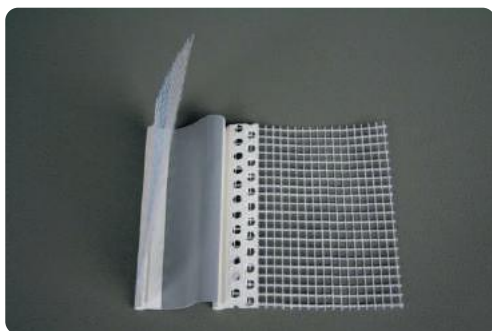


CODE	DIMENSION [MM]	MATERIAL	LENGTH [M]	PACKAGE [UNITS]
BX038	7 mesh 100x100	PVC	2.5	25

### CHARACTERISTICS:

- suitable for ETICS
- prevents crack formation due to stucco thermal movement
- fills and seals control joint to protect against water ingress under stucco
- provides a sharp neat and aesthetic movement joint edges
- provides long-lasting seal and resistance to weather factors
- protects against damp and dirt penetration of thermal insulation
- made of bendable PVC
- attached glass fibre mesh of weight 145 g/m<sup>2</sup>

## EXPANSION JOINT PROFILE FOR FLAT SURFACES E-TYPE



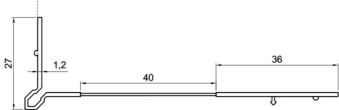
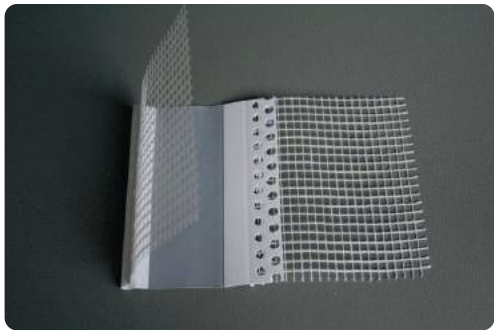
CODE	DIMENSION [MM]	MATERIAL	LENGTH [M]	PACKAGE [UNITS]
BX040	elastomer 40 mesh 100x100	PVC	2	25

### CHARACTERISTICS:

- suitable for ETICS
- forms structural expansion joints between 10-30 mm
- prevents crack formation due to thermal movement
- fills and seals expansion joint to protect against water ingress under thermal insulation
- provides a finished expansion joint edges
- provides long-lasting seal and resistance to weather factors
- protects against damp and dirt penetration of thermal insulation
- attached glass fibre mesh of weight 145 g/m<sup>2</sup>



# EXPANSION JOINT PROFILE FOR INNER CORNERS V-TYPE

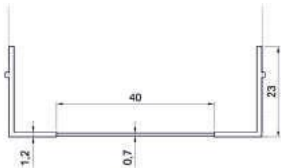
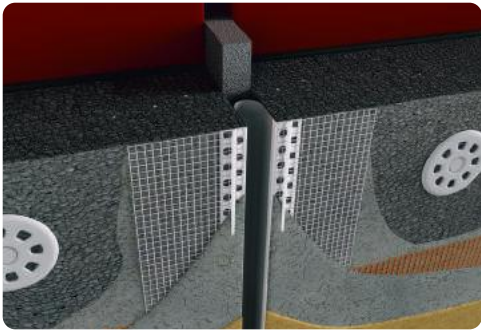
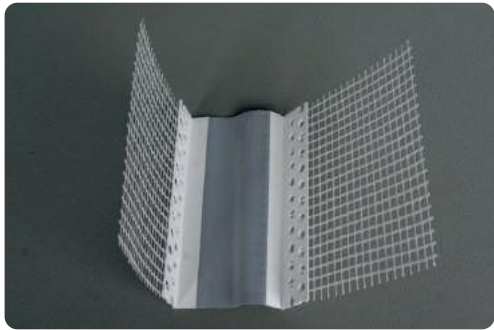


CODE	DIMENSION [MM]	MATERIAL	LENGHT [M]	PACKAGE [UNITS]
BX041	elastomer 40 mesh 100x100	PVC	2	25

## CHARACTERISTICS:

- suitable for ETICS
- forms structural expansion joints between 10-30mm
- prevents crack formation due to thermal movement
- fills and seals expansion joint to protect against water ingress under thermal insulation
- provides a sharp neat and finished expansion joint edges
- provides long-lasting seal and resistance to weather factors
- attached glass fibre mesh of weight 145 g/m²

# MOVEMENT JOINT BEAD FOR FLAT SURFACES

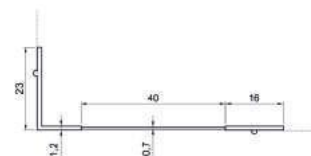
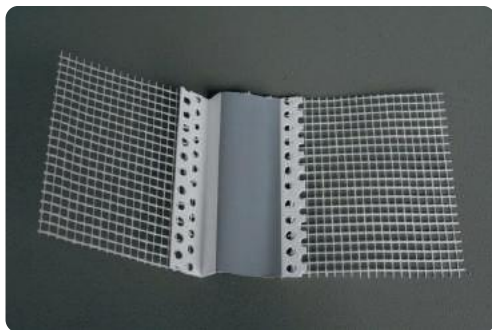


CODE	DIMENSION [MM]	MATERIAL	LENGHT [M]	PACKAGE [UNITS]
BX042	elastomer 40 mesh 110x110	PVC	2.5	25

## CHARACTERISTICS:

- suitable for ETICS
- prevents crack formation due to thermal movement
- fills and seals expansion joint to protect against water ingress under thermal insulation
- provides a sharp neat and finished expansion joint edges
- forms structural expansion joints between 10-30mm
- provides long-lasting seal and resistance to weather factors
- attached glass fibre mesh of weight 145 g/m²

## MOVEMENT JOINT BEAD FOR INNER CORNERS

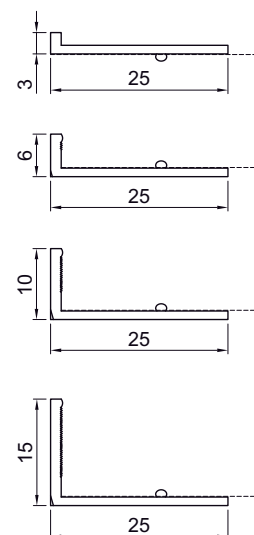


CODE	DIMENSION [MM]	MATERIAL	LENGHT [M]	PACKAGE [UNITS]
BX043	elastomer 40 mesh 110x110	PVC	2.5	25

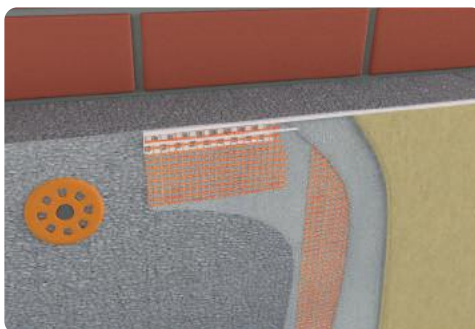
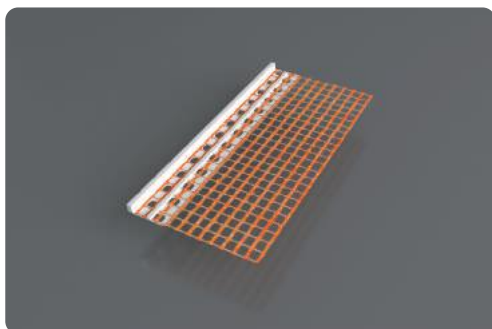
### CHARACTERISTICS:

- suitable for ETICS
- prevents crack formation due to thermal movement
- fills and seals expansion joint to protect against water ingress under thermal insulation
- provides a sharp neat and finished expansion joint edges
- forms structural expansion joints between 10-30mm and provides continuous expansion joint
- provides long-lasting seal and resistance to weather factors
- attached glass fibre mesh of weight 145 g/m<sup>2</sup>

## L STOP BEAD



CODE	DIMENSION [MM]	MATERIAL	LENGHT [M]	PACKAGE [UNITS]
BX044	3	PVC	2	25
BX045	3	PVC	2.5	25
BX048	10	PVC	2	25
BX049	10	PVC	2.5	25
BX050	15	PVC	2	25
BX051	15	PVC	2.5	25

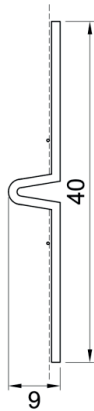
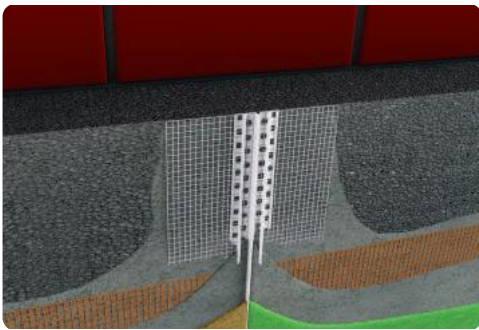
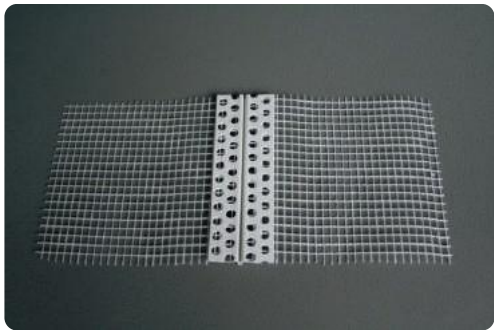


CODE	DIMENSION [MM]	MATERIAL	LENGHT [M]	PACKAGE [UNITS]
BX046	6	PVC	2	25
BX047	6	PVC	2.5	25

### CHARACTERISTICS:

- suitable for ETICS
- enables seaming of various finish coats and smooth transition between them
- enables render termination and seaming of abutting render finish coats applied in different operations
- provides a flush render finish
- render coat thickness matching bead size
- easy and quick to install, shortens finishing works
- attached glass fibre mesh of weight 145 g/m<sup>2</sup>

SCREED

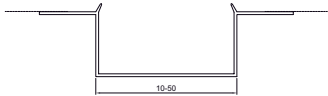
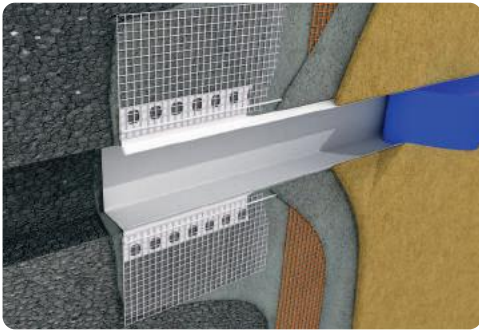
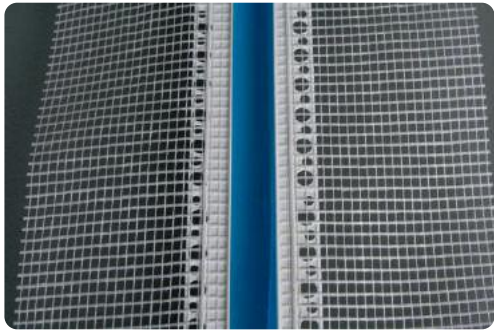


CODE	DIMENSION [MM]	MATERIAL	LENGHT [M]	PACKAGE [UNITS]
BX039	6	PVC	2.5	40

CHARACTERISTICS:

- suitable for ETICS
- used to seam abutting render finish coats in various colours applied to one surface
- universal, can be applied with all types of thermal insulations
- used under finish render coat
- attached glass fibre mesh of weight 145 g/m²

REVEAL TRIM

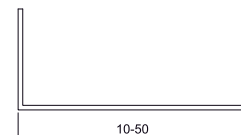
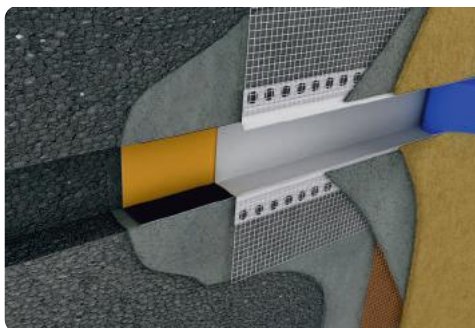
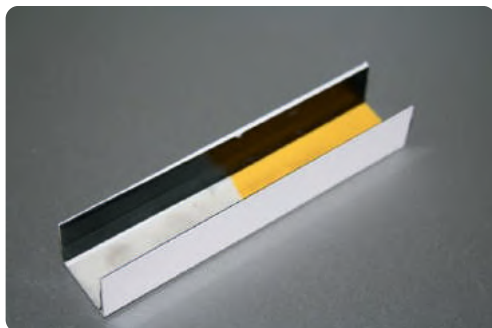


CODE	DIMENSION [MM]	MATERIAL	LENGHT [M]	PACKAGE [UNITS]
BX010	width: 10mm depth: 10mm	PVC	3	20
BX011	width: 20mm depth: 20mm	PVC	3	20
BX012	width: 30mm depth: 20mm	PVC	3	20
BX013	width: 50mm depth: 20mm	PVC	3	20

CHARACTERISTICS:

- create neat and even aesthetic breaks in stucco
- reinforces stucco breaks
- perfect finish effect of stone cladding, cheap and easy since it eliminates the anchoring of heavy stone panels
- provides rustication effect in a cheap and quick way
- forms crisp and neat groove edges
- can be overcoated with exterior paints of any colour
- resistant to weather factors and does not react with building chemistry products
- decorative element
- attached glass fibre mesh of weight 145 g/m²

## ALIGNMENT SPLICE

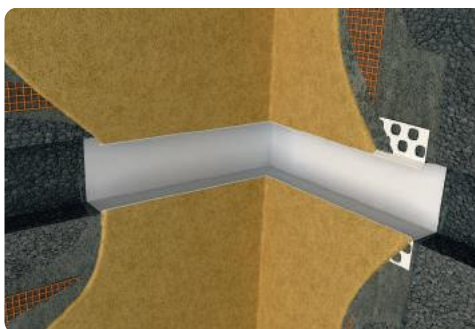


CODE	DIMENSION [MM]	MATERIAL	LENGTH [M]	PACKAGE [UNITS]
BX014	fastener 1 cm	PVC	-	40
BX015	fastener 2 cm	PVC	-	40
BX016	fastener 3 cm	PVC	-	40
BX017	fastener 5 cm	PVC	-	40

### CHARACTERISTICS:

- makes tight and long-lasting butt joints between reveal trims as well as reveal trims and inside corner trims
- aesthetic butt joints
- sized to match reveal trims
- comes with special non-absorbent white foam strip and non-absorbent black gaskets

## CORNER REVEAL TRIM



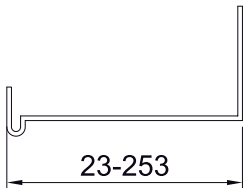
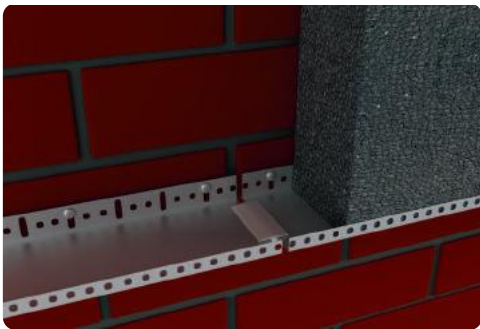
CODE	DIMENSION [MM]	MATERIAL	TYPE	PACKAGE [UNITS]
BX018	width: 30mm depth: 30mm	PVC	internal	10
BX019	width: 30mm depth: 30mm	PVC	external	10

### CHARACTERISTICS:

- creates inside or outside corner at the joining of stucco breaks
- inside or outside corner trim
- seals and tightens trim joints on the building corners
- compensates for uneven cut of trims
- provides attractive finish and increases usable life of stucco
- use dedicated fasteners to join the reveal trim with the corner reveal trim
- suitable for reveal trims with and without mesh



# ALUMINIUM STARTER TRACK

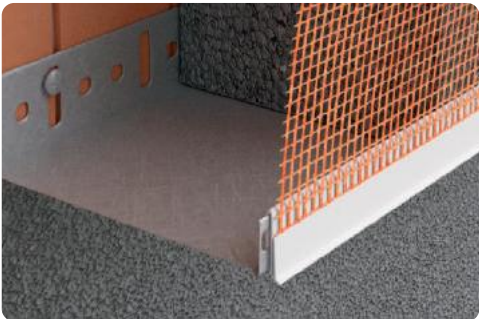


CODE	DIMENSION [MM]	MATERIAL	LENGHT [M]	PACKAGE [UNITS]
BX096	wide: 33mm thick 1.0mm	ALU	2.5	20
BX097	wide: 43mm thick 1.0mm	ALU	2.5	20
BX098	wide: 53mm thick 1.0mm	ALU	2.5	20
BX099	wide: 63mm thick 1.0mm	ALU	2.5	20
BX100	wide: 73mm thick 1.0mm	ALU	2.5	20
BX101	wide: 83mm thick 1.0mm	ALU	2.5	20
BX102	wide: 103mm thick 1.0mm	ALU	2.5	20
BX103	wide: 123mm thick 1.0mm	ALU	2.5	20
BX104	wide: 143mm thick 1.0mm	ALU	2.5	20
BX105	wide: 153mm thick 1.0mm	ALU	2.5	20
BX106	wide: 163mm thick 1.0mm	ALU	2.5	20
BX107	wide: 183mm thick 1.0mm	ALU	2.5	20
BX108	wide: 203mm thick 1.0mm	ALU	2.5	20
BX109	wide: 223mm thick 1.0mm	ALU	2.5	20
BX110	wide: 253mm thick 1.0mm	ALU	2.5	20

## CHARACTERISTICS:

- suitable for ETICS
- bottom runner to secure proper board fixing
- protects bottom external insulation systems from mice or rats and mechanical damage
- prevent air flow between wall and thermal insulation
- available in various thickness Al and for various thickness of thermal insulation

# CLIP-ON ALUMINIUM STARTER TRACK



## CHARACTERISTICS:

- Eliminates cracking and damage at the base sections of the ETICS system
- Draining of water from plaster Avoid capillary action of moisture beneath the plaster
- Easy installation

CODE	DIMENSION [MM]	MATERIAL	LENGHT [M]	PACKAGE [UNITS]
BX111	3	PVC	2.5	20

# HAMMER-IN STARTER TRACK FIXING

PACKAGE 100 PCS.



CODE	DIAMETERX LENGHT	PCS PER PACKAGE
FX-06L060	6x60	100PCS
FX-06L080	6x80	100PCS
FX-08L060	8x60	100PCS
FX-08L080	8x80	50PCS

# BASE TRACK CONNECTOR CLIP

PACKAGE 100 PCS.





# TOOLS



STAINLESS STEEL  
PROFESSIONAL PLASTERERS'  
TROWEL, 'EXPERT'



ITEM	ARTICLE NAME	CODE	PCS PER PACKAGE (UNITS)
1	Stainless trowel with rubber handle 270x128	TBN001	24

STAINLESS STEEL  
PROFESSIONAL PLASTERERS'  
NOTCHED TROWEL, 'EXPERT'



ITEM	ARTICLE NAME	CODE	PCS PER PACKAGE (UNITS)
2	Stainless notched trowel 270x128 wooden handle 4x4	TBN002	24
3	Stainless notched trowel 270x128 wooden handle 6x6	TBN003	24
4	Stainless notched trowel 270x128 wooden handle 8x8	TBN004	24
5	Stainless notched trowel 270x128 wooden handle 10x10	TBN005	24
6	Stainless notched trowel 270x128 wooden handle 12x12	TBN006	24

STAINLESS STEEL FLOAT



ITEM	ARTICLE NAME	CODE	PCS PER PACKAGE (UNITS)
7	Stainless notched trowel 480mm with plastic handle	TBN007	10

PLASTIC TROWEL



ITEM	ARTICLE NAME	CODE	PCS PER PACKAGE (UNITS)
8	Smooth plastic trowel 280x140 abs	TBN008	10

HAND SANDER



ITEM	ARTICLE NAME	CODE	PCS PER PACKAGE (UNITS)
9	Abrasive trowel with latch 210x105	TBN009	30

RUBBER FLOAT



ITEM	ARTICLE NAME	CODE	PCS PER PACKAGE (UNITS)
10	Pcv trowel with rubber 270x130	TBN010	10

## RUBBER SPONGE FLOAT



ITEM	ARTICLE NAME	CODE	PCS PER PACKAGE (UNITS)
11	Pcv trowel with sponge 270x130	TBN011	10

## ABRASIVE RASP



ITEM	ARTICLE NAME	CODE	PCS PER PACKAGE (UNITS)
12	Metal rasp trowel 400x180	TBN012	10

## ABRASIVE RASP



ITEM	ARTICLE NAME	CODE	PCS PER PACKAGE (UNITS)
13	Metal rasp trowel 270x130	TBN013	20

## STAINLESS STEEL FLOAT



ITEM	ARTICLE NAME	CODE	PCS PER PACKAGE (UNITS)
14	Stainless trowel with wooden handle 680mm	TBN014	18
15	Stainless trowel with wooden handle 580mm	TBN015	18

## STAINLESS STEEL PUTTY KNIFE



ITEM	ARTICLE NAME	CODE	PCS PER PACKAGE (UNITS)
16	Stainless paint spatula 100mm	TBN016	20
17	Stainless paint spatula 40mm	TBN017	20
18	Stainless paint spatula 60mm	TBN018	20
19	Stainless paint spatula 80mm	TBN019	20

## STAINLESS STEEL PUTTY KNIFE



ITEM	ARTICLE NAME	CODE	PCS PER PACKAGE (UNITS)
20	Stainless spatula 150x90	TBN020	10



STAINLESS STEEL PUTTY KNIFE



ITEM	ARTICLE NAME	CODE	PCS PER PACKAGE (UNITS)
21	Stainless spatula for facades 350x90	TBN021	10

STAINLESS STEEL TAPING KNIFE



ITEM	ARTICLE NAME	CODE	PCS PER PACKAGE (UNITS)
22	Stainless spatula for facades 350mm with rubber handle	TBN022	10
23	Stainless spatula for facades 550mm with rubber handle	TBN023	10
24	Stainless spatula for facades 600mm with rubber handle	TBN024	10

STAINLESS STEEL COMBINATION TOOL



ITEM	ARTICLE NAME	CODE	PCS PER PACKAGE (UNITS)
25	Stainless universal painter's spatula	TBN025	20

TRIANGULAR BRICK TROWEL, STAINLESS STEEL



ITEM	ARTICLE NAME	CODE	PCS PER PACKAGE (UNITS)
26	Stainless triangular brick trowel 200mm	TBN026	25

BUCKET TROWEL, STAINLESS STEEL



ITEM	ARTICLE NAME	CODE	PCS PER PACKAGE (UNITS)
27	Stainless bucket trowel 120mm	TBN027	50
28	Stainless bucket trowel 140mm	TBN028	50
29	Stainless bucket trowel 160mm	TBN029	50

BUCKET TROWEL, STAINLESS STEEL



ITEM	ARTICLE NAME	CODE	PCS PER PACKAGE (UNITS)
30	Stainless internal angled trowel 120x60	TBN030	50
31	Stainless internal angled trowel 120x75	TBN031	50

## MORTAR MIXING PADDLE



ITEM	ARTICLE NAME	CODE	PCS PER PACKAGE (UNITS)
32	Mortar mixing paddle 80mm	TBN032	50
33	Mortar mixing paddle 100mm	TBN033	40
34	Mortar mixing paddle 120x600x14	TBN034	20

## PAINT MIXING PADDLE



ITEM	ARTICLE NAME	CODE	PCS PER PACKAGE (UNITS)
35	Paint mixing paddle 60mm	TBN035	50
36	Paint mixing paddle 80mm	TBN036	50

## FEATHEREDGE DARBY



ITEM	ARTICLE NAME	CODE	PCS PER PACKAGE (UNITS)
37	Trapezoidal traversing rule 100cm	TBN037	1
38	Trapezoidal traversing rule 150cm	TBN038	5
39	Trapezoidal traversing rule 200cm	TBN039	5
40	Trapezoidal traversing rule 240cm	TBN040	5

## FINISHING DARBY



ITEM	ARTICLE NAME	CODE	PCS PER PACKAGE (UNITS)
41	Traversing rule type h 100cm	TBN041	1
42	Traversing rule type h 150cm	TBN042	4
43	Traversing rule type h 200cm	TBN043	4
44	Traversing rule type h 240cm	TBN044	4

## PLASTIC BUCKET



ITEM	ARTICLE NAME	CODE	PCS PER PACKAGE (UNITS)
45	Round mortar container 45l	TBN045	10
46	Round mortar container 65l	TBN046	10
47	Round mortar container 90l	TBN047	10

## PLASTIC MORTAR BOX



ITEM	ARTICLE NAME	CODE	PCS PER PACKAGE (UNITS)
48	Mortar container 40l	TBN048	10
49	Mortar container 60l	TBN049	10
50	Mortar container 80l	TBN050	10

GROUT BUCKET 16L



ITEM	ARTICLE NAME	CODE	PCS PER PACKAGE (UNITS)
51	Tiling bucket 20l	TBN051	-

ROLLS FOR BUCKET



ITEM	ARTICLE NAME	CODE	PCS PER PACKAGE (UNITS)
52	Twin wash toller for tiling bucket	TBN052	35

SPIKED AERATION ROLLER



ITEM	ARTICLE NAME	CODE	PCS PER PACKAGE (UNITS)
53	Spiked aeration roller 500mm	TBN053	2
54	Spiked aeration roller 700mm	TBN054	2

ROLLER HANDLE



ITEM	ARTICLE NAME	CODE	PCS PER PACKAGE (UNITS)
55	Roller handle 6x50	TBN055	100
56	Roller handle 6x100	TBN056	100
57	Roller handle 6x180	TBN057	100
58	Roller handle 6x250	TBN058	100
59	Roller handle 8x180	TBN059	100
60	Roller handle 8x250	TBN060	100

ROLLER COVER



ITEM	ARTICLE NAME	CODE	PCS PER PACKAGE (UNITS)
61	Facade roller 190mm	TBN061	10
62	Facade roller 250mm	TBN062	10
63	Facade roller cover 190mm	TBN063	10
64	Facade roller cover 250mm	TBN064	10

UNIVERSAL ROLLER



ITEM	ARTICLE NAME	CODE	PCS PER PACKAGE (UNITS)
65	Universal roller 180mm	TBN065	10
66	Universal roller 250mm	TBN066	10
67	Universal roller cover 180mm	TBN067	10
68	Universal roller cover 250mm	TBN068	10

## ROLLER COVER



ITEM	ARTICLE NAME	CODE	PCS PER PACKAGE [UNITS]
69	Latex paint and stain roller 180mm	TBN069	10
70	Latex paint and stain roller 250mm	TBN070	10
71	Latex paint and stain roller cover 180mm	TBN071	10
72	Latex paint and stain roller cover 250mm	TBN072	10

## ROLLER COVER



ITEM	ARTICLE NAME	CODE	PCS PER PACKAGE [UNITS]
73	Roller cover velur 180mm	TBN073	10
74	Roller cover velur 250mm	TBN074	10
75	Velur roller 180mm	TBN075	10
76	Velur roller 250mm	TBN076	10

## MIDI-SIZED ROLLER COVER



ITEM	ARTICLE NAME	CODE	PCS PER PACKAGE [UNITS]
77	Universal midi roller 100mm	TBN077	50
78	Universal midi roller 120mm	TBN078	50
79	Universal midi roller cover 100mm	TBN079	50
80	Universal midi roller cover 120mm	TBN080	50

## MIDI-SIZED ROLLER COVER



ITEM	ARTICLE NAME	CODE	PCS PER PACKAGE [UNITS]
81	Velur midi roller 100mm	TBN081	10
82	Velur midi roller 150mm	TBN082	10
83	Velur midi roller cover 100mm	TBN083	10
84	Velur midi roller cover 150mm	TBN084	10

## ROLLER TRAY



ITEM	ARTICLE NAME	CODE	PCS PER PACKAGE [UNITS]
85	Paint tray 31x35	TBN085	50
86	Paint tray 24x32	TBN086	100
87	Paint tray 15x34	TBN087	150
88	Paint tray 12x19	TBN088	100
89	Paint tray 19x11	TBN089	10

## ROLLER GRID



ITEM	ARTICLE NAME	CODE	PCS PER PACKAGE [UNITS]
90	Paint roller grid 22x26	TBN090	100
91	Paint roller grid 26x32	TBN091	100

ROUND PAINT BRUSH



ITEM	ARTICLE NAME	CODE	PCS PER PACKAGE (UNITS)
92	Round paint brush 20mm	TBN092	12
93	Round paint brush 30mm	TBN093	12
94	Round paint brush 40mm	TBN094	12
95	Round paint brush 50mm	TBN095	6
96	Round paint brush 60mm	TBN096	6

ANGLE SASH BRUSH



ITEM	ARTICLE NAME	CODE	PCS PER PACKAGE (UNITS)
97	Angle sash brush 18mm x 1,5	TBN097	12
98	Angle sash brush 18mm x 2	TBN098	12
99	Angle sach brush 18mm x 2,5	TBN099	12
100	Angle sach brush 18mm x 3	TBN100	12

RADIATOR BRUSH



ITEM	ARTICLE NAME	CODE	PCS PER PACKAGE (UNITS)
101	Radiator Paint Brush 25	BN101	12
102	Radiator Paint Brush 36	BN102	12
103	Radiator Paint Brush 50	BN103	12
104	Radiator Paint Brush 63	BN104	12

CHIP BRUSH



ITEM	ARTICLE NAME	CODE	PCS PER PACKAGE (UNITS)
105	Flat Universal Paint Brush 30mm	BN105	16
106	Flat Universal Paint Brush 40mm	BN106	16
107	Flat Universal Paint Brush 50mm	BN107	16
108	Flat Universal Paint Brush 60mm	BN108	16
109	Flat Universal Paint Brush 70mm	BN109	16

CHIP BRUSH



ITEM	ARTICLE NAME	CODE	PCS PER PACKAGE (UNITS)
110	Paint Brush On Wood 30mm	BN110	16
111	Paint Brush On Wood 40mm	BN111	16
112	Paint Brush On Wood 50mm	BN112	16
113	Paint Brush On Wood 60mm	BN113	16
114	Paint Brush On Wood 70mm	BN114	16

CHIP BRUSH



ITEM	ARTICLE NAME	CODE	PCS PER PACKAGE (UNITS)
115	Flat Paint Brush For Acrylic Paint 30mm	BN115	16
116	Flat Paint Brush For Acrylic Paint 40mm	BN116	16
117	Flat Paint Brush For Acrylic Paint 50mm	BN117	16
118	Flat Paint Brush For Acrylic Paint 60mm	BN118	16
119	Flat Paint Brush For Acrylic Paint 70mm	BN119	16

## CHIP BRUSH



ITEM	ARTICLE NAME	CODE	PCS PER PACKAGE (UNITS)
120	Flat Professional Paint Brush 25mm	BN120	16
121	Flat Professional Paint Brush 38mm	BN121	16
122	Flat Professional Paint Brush 50mm	BN122	16
123	Flat Professional Paint Brush 63mm	BN123	16
124	Flat Professional Paint Brush 76mm	BN124	16

## TEXTURE STAMP (BOLIX TR)



ITEM	ARTICLE NAME	CODE	PCS PER PACKAGE (UNITS)
125	Texture Stamp 100mm,130mm	BN125	1

## FOAM GUN



ITEM	ARTICLE NAME	CODE	PCS PER PACKAGE (UNITS)
126	Foam Gun	BN126	1

## BLOCK BRUSH 'EXTRA'



ITEM	ARTICLE NAME	CODE	PCS PER PACKAGE (UNITS)
127	Block Brush 180mm	BN127	10

## RENDER SCRAPER WITH SPIKES



ITEM	ARTICLE NAME	CODE	PCS PER PACKAGE (UNITS)
128	Render scraper with spikes	BN128	

## ANGLE TROWEL - RASP FOR STYROFOAM



ITEM	ARTICLE NAME	CODE	PCS PER PACKAGE (UNITS)
129	Angle Rasp Trowel 270mm (for Styrofoam)	BN129	

## BRICK EFFECT STENCIL



ITEM	ARTICLE NAME	CODE	PCS PER PACKAGE (UNITS)
130	Brick effect stencil	TBN130	50



PROFESSIONAL PAINTER'S MASKING TAPE



ITEM	ARTICLE NAME	CODE	PCS PER PACKAGE (UNITS)
131	Professional painter's masking tape (uv resistant) 38mmx50m	TBN131	49
132	Professional painter's masking tape (uv resistant) 30mmx50m	TBN132	28
133	Professional painter's masking tape (uv resistant) 25mmx50m	TBN133	36
134	Professional painter's masking tape (uv resistant) 48mmx50m	TBN134	42

PROFESSIONAL PAINTER'S MASKING TAPE FOR CURVES



ITEM	ARTICLE NAME	CODE	PCS PER PACKAGE (UNITS)
135	Professional painter's masking tape for curves 36mm	TBN135	16

EXTERIOR MASKING TAPE FOR SMOOTH SURFACES



ITEM	ARTICLE NAME	CODE	PCS PER PACKAGE (UNITS)
136	Exterior masking tape for smooth surfaces 48mmx25m	TBN136	36
137	Exterior masking tape for smooth surfaces 38mmx50m	TBN137	32
138	Exterior masking tape for smooth surfaces 48mmx50m	TBN138	24

ROUGH SURFACE EXTERIOR TAPE



ITEM	ARTICLE NAME	CODE	PCS PER PACKAGE (UNITS)
139	Exterior masking tape for rough surfaces 48mmx50m	TBN139	24
140	Exterior masking tape for rough surfaces 38mmx50m	TBN140	32
141	Exterior masking tape for rough surfaces 48mmx20m	TBN141	24

STRONG DT PR SLIGHT ROUGH AND SMOOTH SURFACES



ITEM	ARTICLE NAME	CODE	PCS PER PACKAGE (UNITS)
142	Strong dt pr slight rough and smooth surfaces 48mm x 50m	TBN142	18

UNIVERSAL DT-ST



ITEM	ARTICLE NAME	CODE	PCS PER PACKAGE (UNITS)
143	Universal dt-st (s) [fm190] 48mm x 50yd	TBN143	24
144	Universal dt-st (s) [fm190] 48mm x 25yd	TBN144	30



## ALUMINIUM TAPE



ITEM	ARTICLE NAME	CODE	PCS PER PACKAGE (UNITS)
145	Aluminium tape at-22 48mm x 25yd	TBN145	30

## METALLIZED TAPE



ITEM	ARTICLE NAME	CODE	PCS PER PACKAGE (UNITS)
146	Metallized tape atpp 48mm x 50m	TBN146	36

## DOUBLE-SIDED



ITEM	ARTICLE NAME	CODE	PCS PER PACKAGE (UNITS)
147	Double-sided dpp (h) smooth surfaces 50mm x 25m	TBN147	24
148	Double-sided dpp-pr (h) 48mm x 25m	TBN148	24
149	Double-sided dscl-st (h) 50mm x 25m	TBN149	24
150	Double-sided dft (w) 19mm x 5m	TBN150	24

## TAPES SET GREAT EFFECTS



ITEM	ARTICLE NAME	CODE	PCS PER PACKAGE (UNITS)
151	Tapes set Great Effects	TBN151	21

## MASKING TAPE

ITEM	ARTICLE NAME	CODE	PCS PER PACKAGE (UNITS)
152	Masking tape [7 days] 30mm x 50m	TBN152	28
153	Masking tape [7 days] 38mm x 50m	TBN153	24
154	Masking tape [7 days] 48mm x 50m	TBN154	24

## TAPE FOR PAINTER'S CARDBOARD

ITEM	ARTICLE NAME	CODE	PCS PER PACKAGE (UNITS)
155	Tape for painter's cardboard 60mm x 25m	TBN155	8

## TAPE FOR CONSTRUCTION FOIL



ITEM	ARTICLE NAME	CODE	PCS PER PACKAGE (UNITS)
156	Tape for construction foil 50mm x 50m	TBN156	24

TAPE FOR INSULATING FOIL



ITEM	ARTICLE NAME	CODE	PCS PER PACKAGE [UNITS]
157	Tape for insulating foil pe (tr) 48mm x 50m	TBN157	24

TAPE FOR VAPOUR-PROOF FOIL



ITEM	ARTICLE NAME	CODE	PCS PER PACKAGE [UNITS]
158	Tape for vapour-proof foil hbd (r) 60mm x 25m	TBN158	8

EXTERIOR TAPE



ITEM	ARTICLE NAME	CODE	PCS PER PACKAGE [UNITS]
159	Exterior tape 48mm x 50m	TBN159	24

PLASTER'S TAPE



ITEM	ARTICLE NAME	CODE	PCS PER PACKAGE [UNITS]
160	Plaster's tape slight rough and smooth surfaces 48mm x 50m	TBN160	24

TAPE FOR CONSTRUCTION WOODWORK



ITEM	ARTICLE NAME	CODE	PCS PER PACKAGE [UNITS]
161	Tape for construction woodwork 48mm x 33m	TBN161	24

MASKING TAPE



ITEM	ARTICLE NAME	CODE	PCS PER PACKAGE [UNITS]
162	Masking tape [3 days] 48mmx50m	TBN162	24
163	Masking tape [3 days] 38mmx50m	TBN163	24
164	Masking tape [3 days] 30mmx50m	TBN164	28

## INTERFACING TAPE



ITEM	ARTICLE NAME	CODE	PCS PER PACKAGE [UNITS]
165	Interfacing tape txt 50mm x 25m	TBN165	40

## FIBER -GLASS TAPE



ITEM	ARTICLE NAME	CODE	PCS PER PACKAGE [UNITS]
166	Fiber - glass tape fsh 48mm x 20m	TBN167	60
167	Fiber - glass tape fsh 48mm x 90m	TBN168	24
168	Fiber - glass tape fsh 150mm x 20m	TBN169	24

## PAPER MASKING TAPE



ITEM	ARTICLE NAME	CODE	PCS PER PACKAGE [UNITS]
169	Paper masking tape 48mm x 50m	TBN169	24
170	Paper masking tape 38mm x 50m	TBN170	24
171	Paper masking tape 30mm x 50m	TBN171	28
172	Paper masking tape 25mm x 50m	TBN172	36

## PACKAGING SEALING TAPE



ITEM	ARTICLE NAME	CODE	PCS PER PACKAGE [UNITS]
173	Packaging sealing tape pt (tr) 48mm x 40yd	TBN173	36
174	Packaging sealing tape pt (br) 48mm x 40yd	TBN174	36

## SELF-ADHESIVE PROTECTION FOIL



ITEM	ARTICLE NAME	CODE	PCS PER PACKAGE [UNITS]
175	Self-adhesive protection foil 600x15m	TBN175	9

## BAHCO PROF CUT

HANDSAW WITH NEW WAVED TOOTHING WHICH ALLOWS TO SLICE THROUGH INSULATION MATERIALS (EPS, MINERAL WOOL) CREATING MINIMAL WASTE.



ITEM	ARTICLE NAME	CODE	PCS PER PACKAGE [UNITS]
176	Insulation handsaw	TBN176	4

# WAVING HANDSAW

## NO RASP AND CUT DIRT

- CLEAN BUILDING SITE
- MINIMAL WASTE
- LESS DUST



- Specially developed for cutting insulation material without a problem: EPS (up to 75mm), XPS (up to 75mm), mineral wool.
- The handsaw has a wave formed sharpened edge that allows it to slice through the material creating minimal waste.
- The insulation handsaw has been tested on all sorts of insulation materials giving excellent finishing with low friction and creates less sawdust.
- The sleeve is impregnated with a Volatile Corrosion Inhibitor that will protect the saw from corrosion.
- Thanks to its long 22" saw blade it can cut through thick piles of insulation wool, while also cutting straighter than other replacement products, like knives.



# POWER TOOLS



# RASPING VACUUM

- Ideal facade surface - vacuum smoothenes EPS
- Reduced base coat and render coverage (even facade surface)
- Prevents micro cracking of the facade surface which leads to water penetration



- Light weight
- Large filter bags, capacity 15 l
- Short hose length to maximise high suction power
- Long continuous operation
- No need to be dragging heavy separate vacuum systems around
- Freedom of movement
- No sensitive electronic components
- Fast, low cost operation

## TECHNICAL CHARACTERISTICS

VOLT TYPE1	230/ 50/60 Hz
VOLT TYPE2	120/ 50/60 Hz
WATT	1100
VACUUM	190 mbar
MAX. AIR FLOW	max: 60l/sek.
BAG VOLUME	15l
WEIGHT	6,5kg
DIMENSIONS IN MM	H.630, W.430, D.200

\*Estimated lead time is one month and it is determined specifically after order acceptance.  
\*\* The guarantee is only valid on the territory of the Republic of Poland.



# CONTINUOUS MIXER G15

Continuous mixer G15 of universal using, is excellent and suitable for premixing dry material, adhesive and reinforce mortar, ornamental paster and materials with grain size up to 4 mm.

Continuous mixer G15 is effective, easy to use and very flexible. Its particular small weight, easy disassembly and fold-up frame, make it possible to transport in almost each car. Optimal mixed material and rubber mixing tube allow cleaning of the entire mixing area and ensure the best, friendly handling both inside and outside building site.



## TECHNICAL CHARACTERISTICS

OUTPUT	15-20 l.
DRIVE	230V / 50 Hz
	1.1 Kw
WEIGHT	67 kg
LENGTH	1500 mm
WIDTH	650 mm
HEIGHT	900 mm
WATER CONNECTION	Geka 1/2"
WATER PRESSURE	min. 2.5 bar
SAFEGUARDING	16A, protective switch FI
VOLTAGE	230V/50 Hz
FUSES	20 A
CONNECTION CABLE	3x1,5 mm <sup>2</sup>
ENGINE POWER (VARIABLE ROTARY)	2,2 kW
*MAXIMUM EFFICIENCY	25 L/min
MAX PRESSURE	40 bar
MAX GRAIN THICKNESS	4 mm
*MAX RANGE	30 m
DIMENSIONS	1190x540x670
TANK CAPACITY	60 L
WEIGHT	110 kg
COMPRESSOR	1,5 kW 390 L/min

EQUIPMENT	
60L stainless steel tank	1 pcs.
Truck set	1 pcs.
Compressor	1 pcs.
Control panel	1 pcs.
Mortar pressure hose 25	1x10m
Air hose 12,5	1x10m
Spraying gun	1 pcs.
Gun nozzle 4, 8, flat	1 cpl.
The Jacket and the Worm D6-3 Super	1 cpl.
Cleaning ball	1 pcs.
Coupling g/k	2 pcs.
Wrench for the worm	1 pcs.
Flat wrench	1 pcs.
DTR	1 pcs.

# PADDLE MIXER UT1200

Used to stir and mix paint, glue, tile adhesive etc.



## TECHNICAL CHARACTERISTICS

MIXING CAPACITY	30 kg
INPUT WATTAGE 230V	960 W
RATED SPEED (230V)	0-590 rpm
MAX BASKET DIAMETER	120 mm
TOOL HOLDER THREAD	M14 female
NET WEIGHT	3,2 kg

\*Mixing paddles not included in the kit. Inquire Customer Service about the price and availability.

# PLASTERING UNIT TYPE KALETA-151

Unit intended for applying mineral and acrylic putty, structural plasters, adhesives, finishing coats, thermal insulation systems, fire protections.



## TECHNICAL CHARACTERISTICS

VOLTAGE	230V/50 Hz
FUSES	20 A
CONNECTION CABLE	3x1,5 mm²
ENGINE POWER (VARIABLE ROTARY)	2,2 kW
*MAXIMUM EFFICIENCY	25 L/min
MAX PRESSURE	40 bar
MAX GRAIN THICKNESS	4 mm
*MAX RANGE	30 m
DIMENSIONS	1190x540x670
TANK CAPACITY	60 L
WEIGHT	110 kg
COMPRESSOR	1,5 kW 390 L/min

EQUIPMENT	
60L stainless steel tank	1 pcs.
Truck set	1 pcs.
Compressor	1 pcs.
Control panel	1 pcs.
Mortar pressure hose 25	1x10m
Air hose 12,5	1x10m
Spraying gun	1 pcs.
Gun nozzle 4, 8, flat	1 cpl.
The Jacket and the Worm D6-3 Super	1 cpl.
Cleaning ball	1 pcs.
Coupling g/k	2 pcs.
Wrench for the worm	1 pcs.
Flat wrench	1 pcs.
DTR	1 pcs.

+ GUN NOZZLE 4 & 6 MM + WORM PUMP (WORM D6-3 KALETA SUPER + RUBBER JACKET D6-3 KALETA SUPER)

\*Estimated lead time is one month and it is determined specifically after order acceptance.  
\*\* The guarantee is only valid on the territory of the Republic of Poland.



# OTHERS



# SOLTHERM PTE\* COATING EMULSION INSULATION FOR POLYSTYRENE AND GRAPHITE ENHANCED BOARDS

- It provides a white coat on the surface of EPS
- Contains quartz fillers enhancing the adhesion of reinforced base coat to EPS
- Significantly reduces heating of EPS when exposed to sunlight and in consequence reduces its thermal deformation
- Sprayable
- Does not contain organic solvents (VOC)

CODE	CONTAINER (KG)	NO. OF CONTAINERS PER PALLET (UNITS)	COVERAGE (KG/M²)
-	10	44	up to 0,625 (at one coat application)



# SOLTHERM ZP\* FOAM FOR POLYSTYRENE BOARD INSTALLATION

- Excellent adhesion to polystyrene and mineral substrates
- Yield of 10m2 if EPS boards are installed to walls
- Low-pressure
- Application temperature from -5°C
- Dowelling already after 2h
- Very good adhesion to bituminous substrates
- Very good thermal insulation
- Easy to apply

CODE	CONTAINER (ML)	NO. OF CONTAINERS PER BOX (UNITS)	COVERAGE (DM³)
TPI ZP	750	12	up to 0,55 (depends on ambient humidity and temp.)



# SOLTHERM PM-L\* LOW-PRESSURE INSTALLATION FOAM

- Low-pressure, water resistant
- High yield up to 50dm³
- Very good thermal and sound insulation properties
- Application temperature range from -10°C to +30°C
- Resistant to fungi and mould
- Dimensionally stable

CODE	CONTAINER (ML)	NO. OF CONTAINERS PER BOX (UNITS)	COVERAGE (DM³)
TPI PML	680	12	up to 50 (depends on ambient humidity and temp.)



OTHERS

\* Available in a universal container with a thermal printed label or under the brand name BOLIX. Both represent the same product.

## SOLTHERM B-MB EMULSION\*

### ASPHALT LATEX EMULSION SEALING ALL SUBSTRATES. WHEN THINNED WITH WATER CAN BE APPLIED AS A PRIMER

- Hand and spray applied
- UV resistant
- Solvent-free
- Ready to use, can be applied as a primer when thinned with water

CODE	CONTAINER (L)	NO. OF CONTAINERS PER PALLET (UNITS)	COVERAGE (KG/M <sup>2</sup> )
TBI B-MB	680	12	approx. 0.3 Damp proof membrane approx. 0.3-0.4 Roofing repair approx. 0.06 Primer



## SOLTHERM B-1SM EXPRESS\*

### SINGLE COMPONENT THICK COAT ASPHALT RUBBER COMPOUND WITH POLYSTYRENE FILLER FOR WATERPROOF MEMBRANE AND XPS BOARD INSTALLATION

- Quickly increases weather resistance properties of the substrate after application
- Fast-drying
- Hand and spray applied
- Provides highly flexible coating
- Crack filling properties
- Resistant to aggressive substances present in soil
- Solvent-free
- Ready to use
- For interior and exterior application
- Suitable for XPS boards installation

CODE	CONTAINER (L)	NO. OF CONTAINERS PER PALLET (UNITS)	COVERAGE (KG/M <sup>2</sup> )
TBI B-1SM	32	18	approx. 3.5 waterproof membrane approx. 4.5 heavy duty waterproof membrane approx. 2.0 insulation boards installation



## SOLTHERM B-2SM PROFI\*

### TWO-COMPONENT THICK COAT ASPHALT RUBBER COMPOUND WITH POLYSTYRENE FILLER FOR WATERPROOF MEMBRANE AND XPS BOARD INSTALLATION

- Quickly increases weather resistance properties of the substrate after application
- Fast-drying
- Hand and spray applied
- Increased flexibility
- Crack filling properties
- Resistant to aggressive substances present in soil
- Suitable for XPS boards installation
- Solvent-free
- For interior and exterior application

CODE	CONTAINER (L)	NO. OF CONTAINERS PER PALLET (UNITS)	COVERAGE (KG/M <sup>2</sup> )
TBI B-2SM P	32	18	approx. 4.5 damp proof membrane approx. 4.5 waterproof membrane approx. 6.0 heavy duty waterproof membrane approx. 2.0 insulation boards installation



# SEALING TAPE HYDRO-T\*

- Made of polyester mesh and tight elastomeric sealing coating
- For embedding in sealing products like waterproofing membrane or sealants
- For waterproof bridging of expansion and edge joints and room corners
- 120mm wide

CODE	CONTAINER [M]	UNITS PER BOX [UNITS]
BOLIX HYDRO-T 10	10	1
BOLIX HYDRO-T 50	50	1



# OUTSIDE SEALING CORNER

- Made of polyester mesh and tight elastomeric sealing coating
- Pre-moulded and pre-cut corners increase sealing tape tightness at corner seams
- Enhanced sealing properties and easy application

CODE	CONTAINER [MM]	UNITS PER BOX [UNITS]
Outside sealing corner	130x130	25



# INSIDE SEALING CORNER

- Made of polyester mesh and tight elastomeric sealing coating
- Pre-moulded and pre-cut corners increase sealing tape tightness at corner seams
- Enhanced sealing properties and easy application

CODE	CONTAINER [MM]	UNITS PER BOX [UNITS]
Inside sealing corner	130x130	25

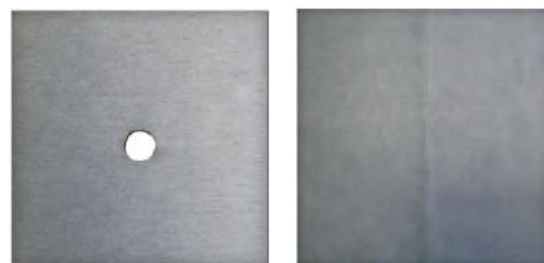


\* Available in a universal container with a thermal printed label or under the brand name BOLIX. Both represent the same product.



## WALL SEALING COLLAR

CODE	DIMENSIONS (MM)	UNITS PER BOX (UNITS)
Small wall collar	120x120	25
Large floor collar 360	360x360	10
Large floor collar 300	300x300	10
Large floor collar 250	250x250	10



## SELF-EXPANDING SEALANT TAPE

- with acrylate dispersion impregnation and adhesive on one side
- pre-compressed, will expand to tight fill substrates (expands 5 times when compared to the initial thickness)
- flexible polyurethane foam
- for filling and sealing joints like expansion joints in ETICS

CODE	DIMENSIONS (MM) <small>Width/thickness before expansion/thickness after expansion</small>	UNITS PER CONTAINER	COLOUR
TTS 10/2/10	10/2/10	20/250	grey
TTS 10/4/20	10/4/20	20/160	grey
TTS 15/4/20	15/4/20	13/104	grey
TTS 20/4/20	20/4/20	10/80	grey
TTS 15/6/30	15/6/30	13/72,8	grey
TTS 20/6/30	20/6/30	10/56	grey
TTS 20/8/40	20/8/40	10/40	grey





# MARKETING MATERIALS



## SOLTHERM STICKER LARGE MDPO-SL

17x5,5



## ORANGE T-SHIRT WITH SOLTHERM LOGO MOKO-PO-ST



## SWEATSHIRT FLEECE WITH SOLTHERM LOGO MOKO-BI-ST



## DUNGAREES WITH SOLTHERM LOGO MOSP-SZ-ST



## SOLTHERM WORK GLOVES MOKO-RE-ST



## SOLTHERM LANYARDS MGPO-SM-STI



SOLTHERM PAPER BAG  
MGPO-ST



SOLTHERM USB STICK 8GB  
MGBI-P8-ST



SOLTHERM PEN  
MGBI-DP-ST



SOLTHERM PENCIL  
MGBI-OK-ST



MULTI APP PENKNIFE  
MGPO-SC-ST



SOLTHERM CAP  
MOCZ-ST



## SCAFFOLDING NET NEW 2.6 x 5m

MSLE-EN-SLN



## SOLTHERM LEAFLET

MDUL-UK-ST



## MEASURING RULE

MGPO-MI-ST



## WOODEN MEASURING RULE

MGPO-MD-ST



## SOLTHERM CATALOGUE

MDFO-GB-ST



## PENKNIFE FOR CUTTING

MGBI-SL-A5



SOLTHERM  
TRAINING NOTEPAD A5  
MGBI-SL-A5



SOLTHERM TRAINING  
NOTEPAD A4  
MGBI-SL-A4



SOLTHERM ADHESIVE TAPE  
MDPO-SL-NW







[www.ewi-soltherm.com](http://www.ewi-soltherm.com)

