

The [New York Clean Transportation Prizes](#) aim to enhance clean transportation and mobility options and reduce harmful emissions across New York State with a focus on underserved communities.

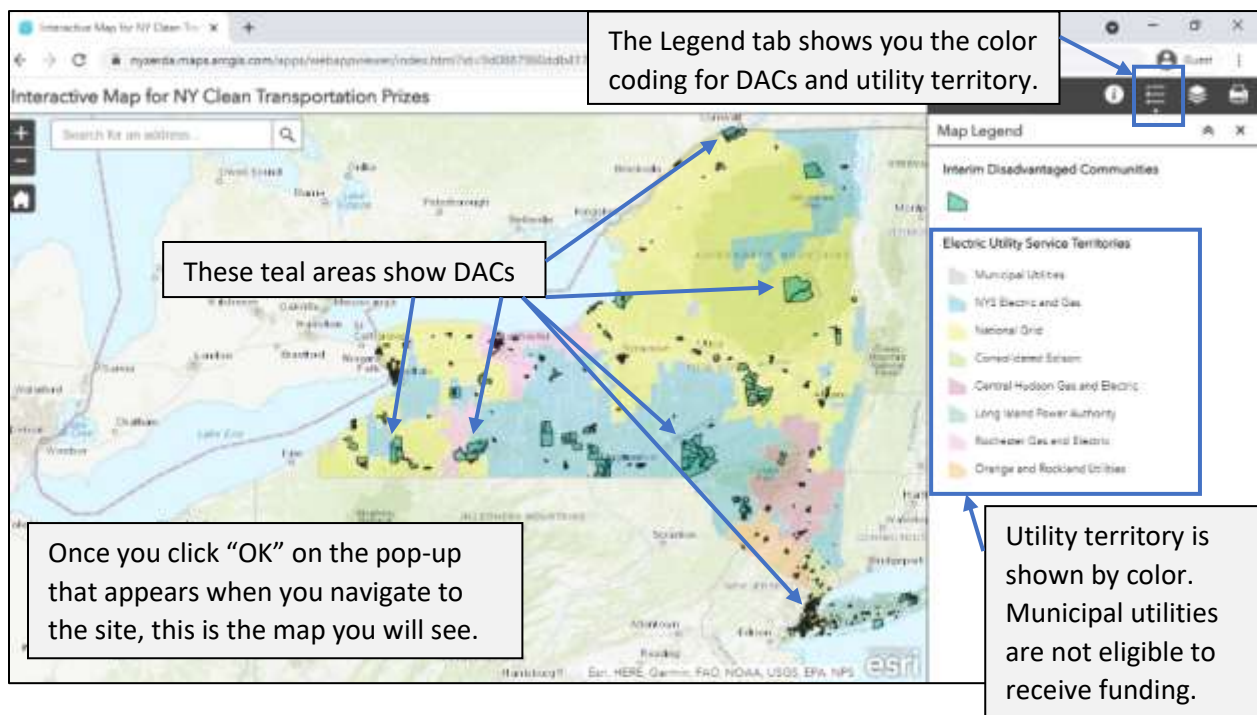
Under the [Clean Neighborhoods Challenge](#) and [Electric Mobility Challenge](#), proposals must focus their efforts in at least one disadvantaged community (DAC). Under the [Electric Truck & Bus Challenge](#), proposals must focus their efforts in at least one DAC to receive the highest scores.

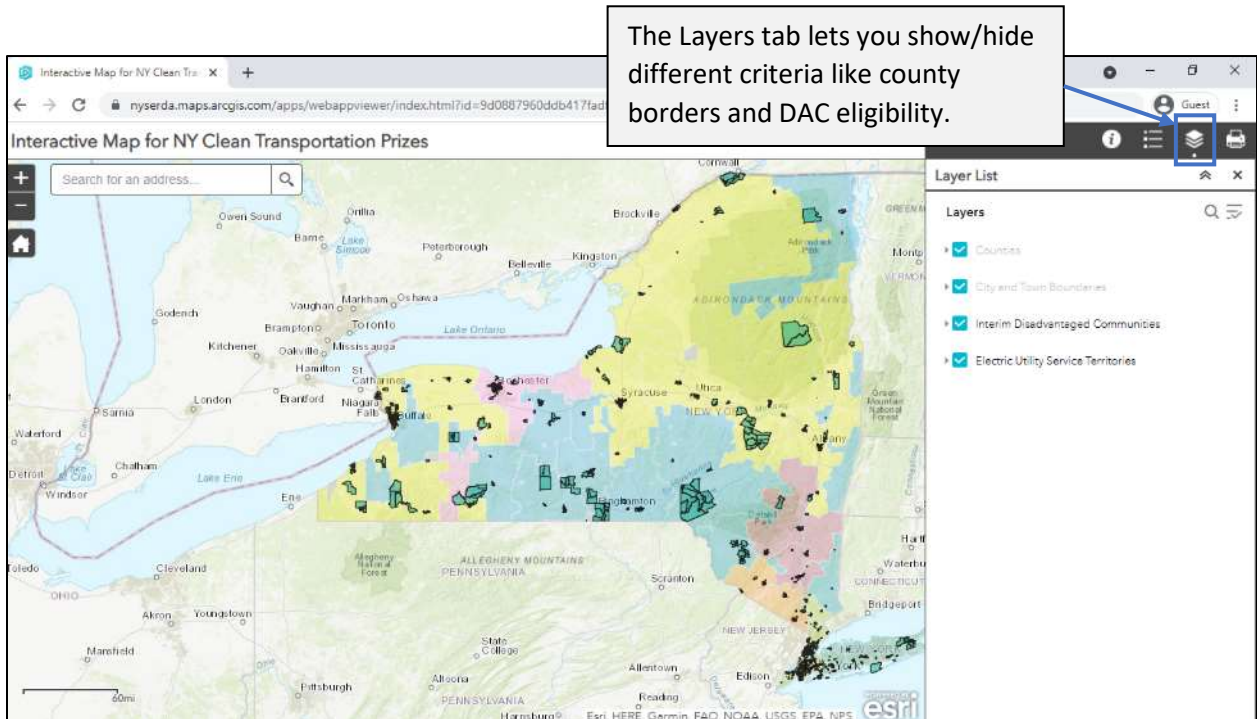
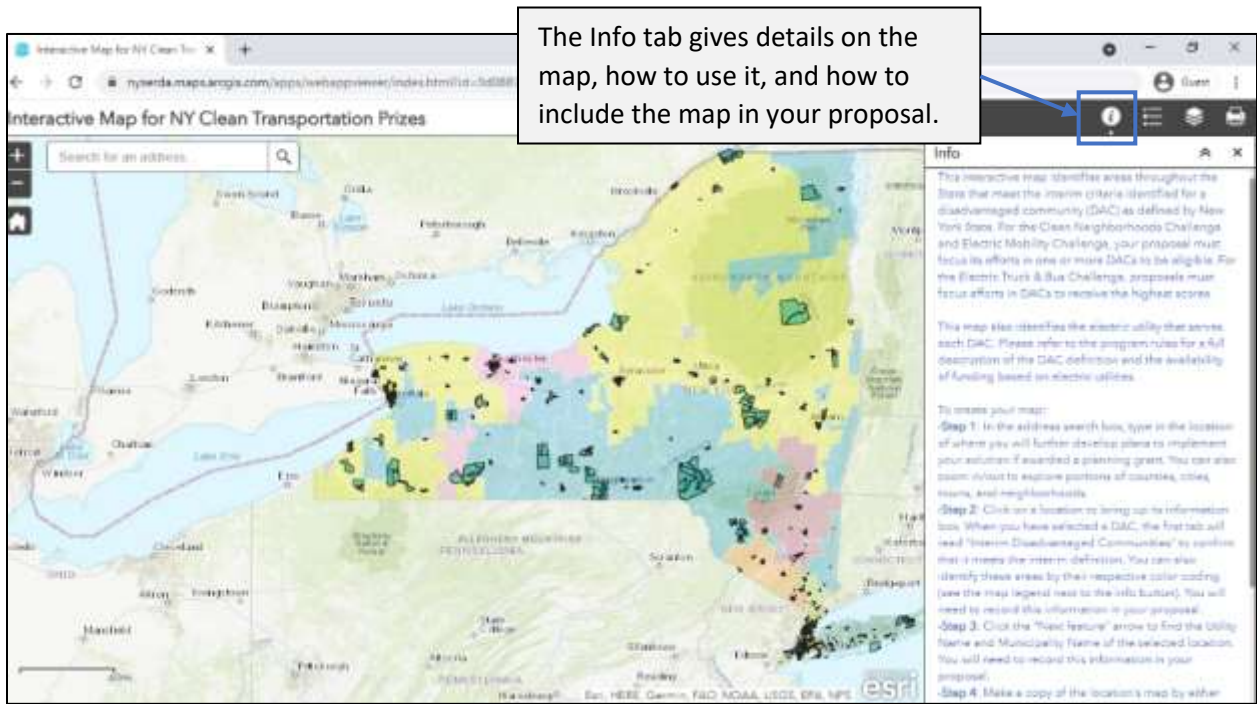
Disadvantaged communities include either:

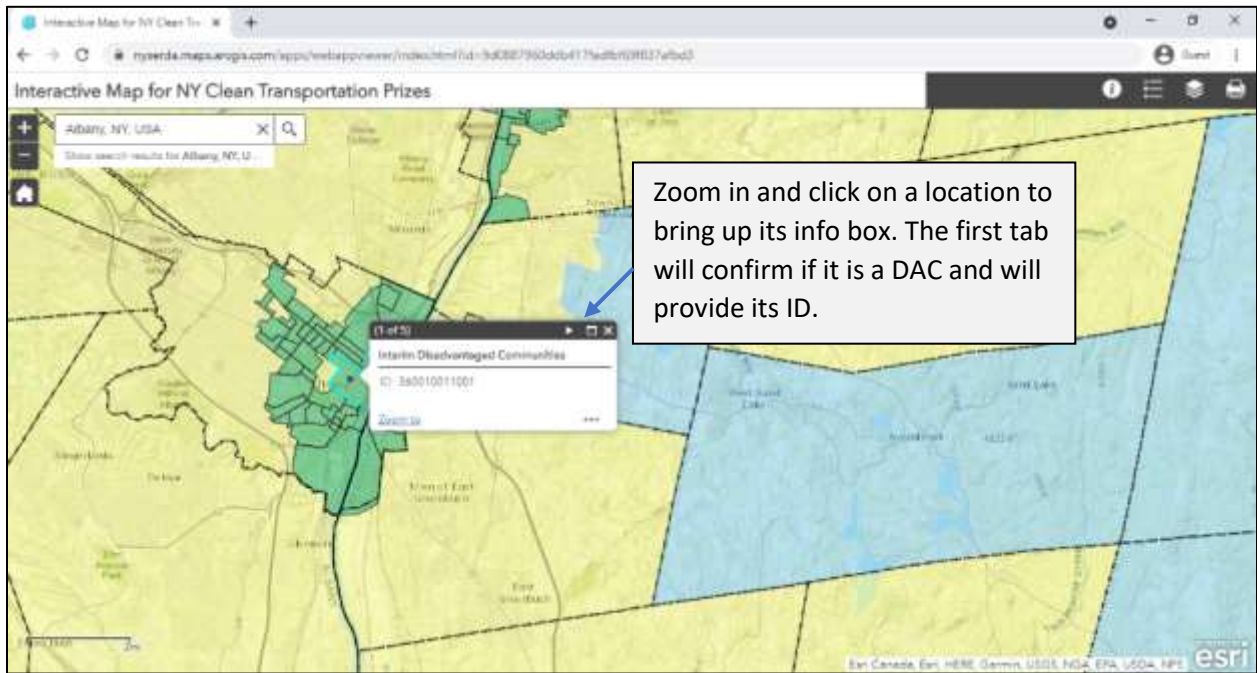
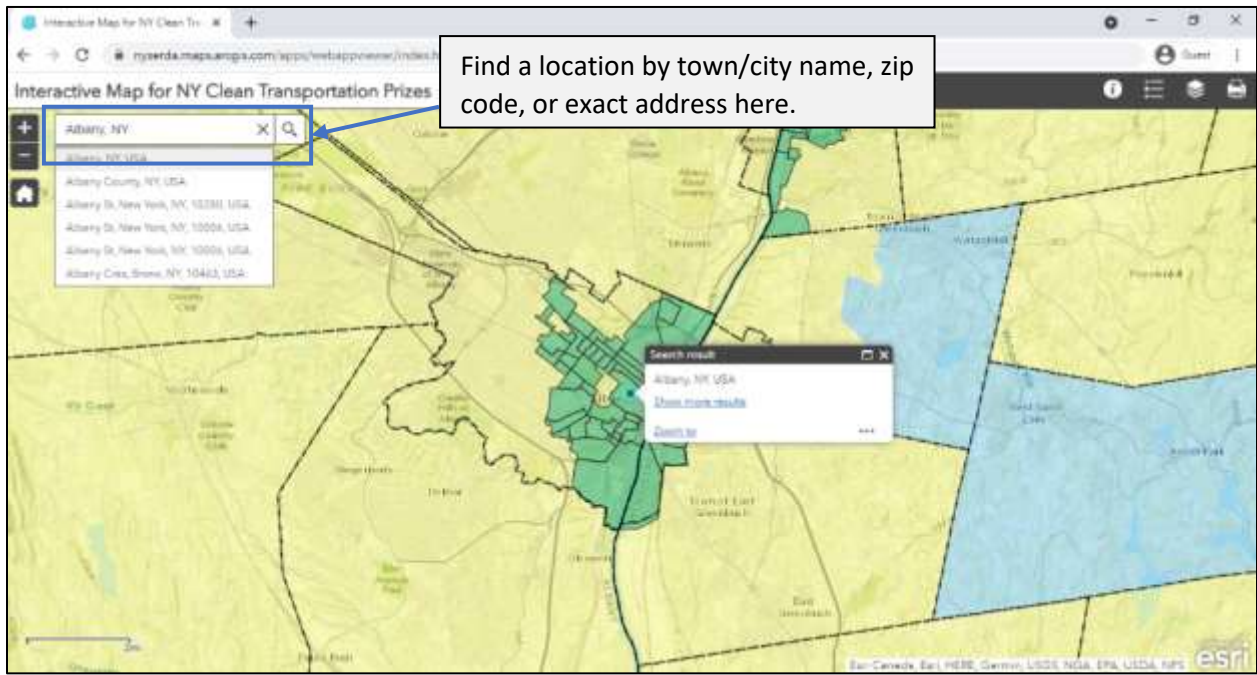
1. Communities that meet both of the following criteria:
 - Census block groups that are in the top quartile of HUD census tracts meeting the annual income threshold of 50% Area Median Income (see below*), and
 - Location identified as a [Potential Environmental Justice Areas](#), as defined by the New York State Department of Environmental Conservation, or
2. Communities located within [New York State Opportunity Zones](#).

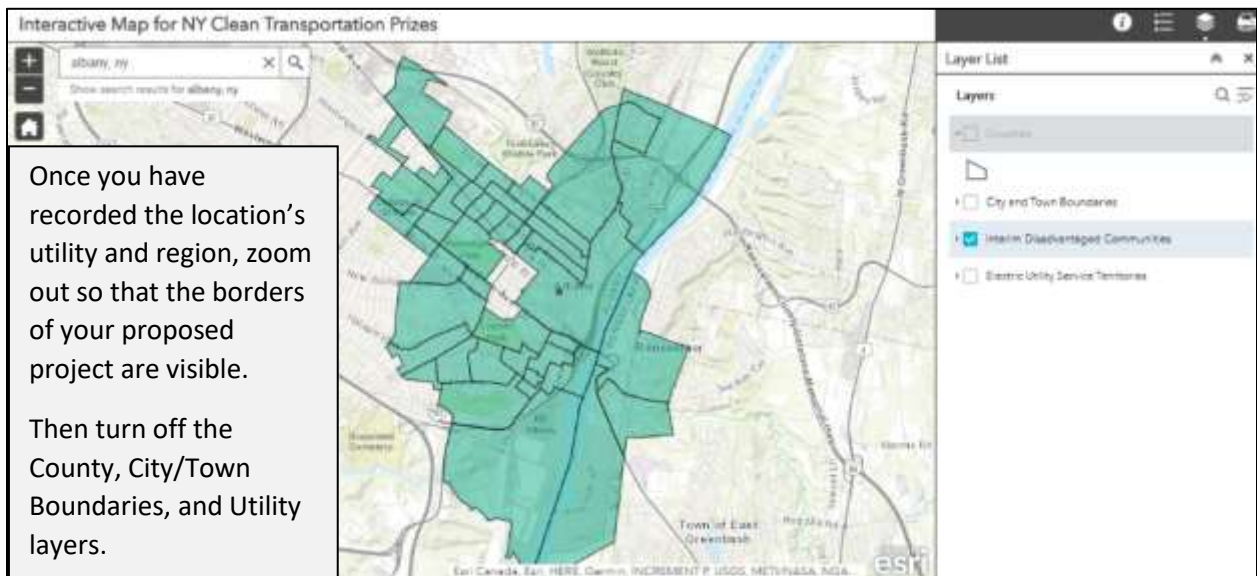
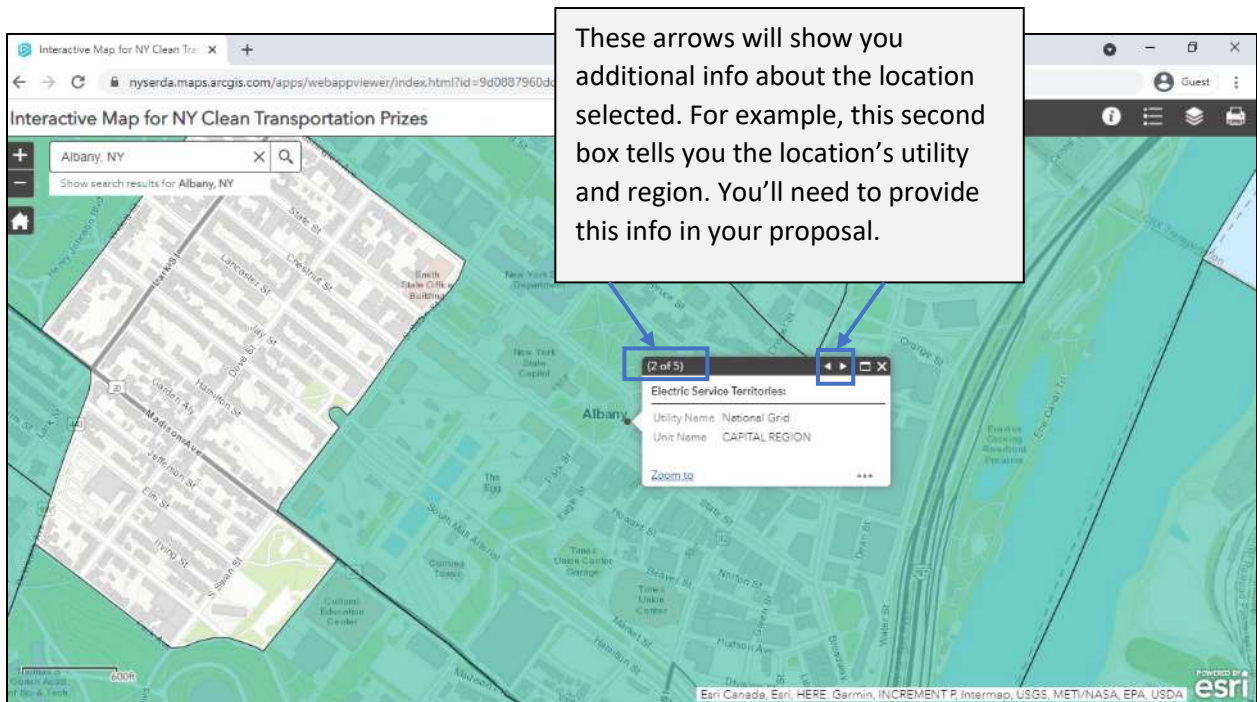
**HUD 50% Threshold: Top quartile of census block groups in New York, ranked by the percentage of LMI Households in each census block. LMI Households are defined as households with annual incomes at or below 50% of the AMI of the County or Metro area where the Census Block Group resides.*

This is a guide to using [NYSERDA’s interactive map](#), which show the electricity utilities’ service territories and designated DACs across the state. As part of your [proposal](#), your team is required to upload your PDF version of this map in response to “Map of Primary Location(s) of Proposed Work” under Section E.





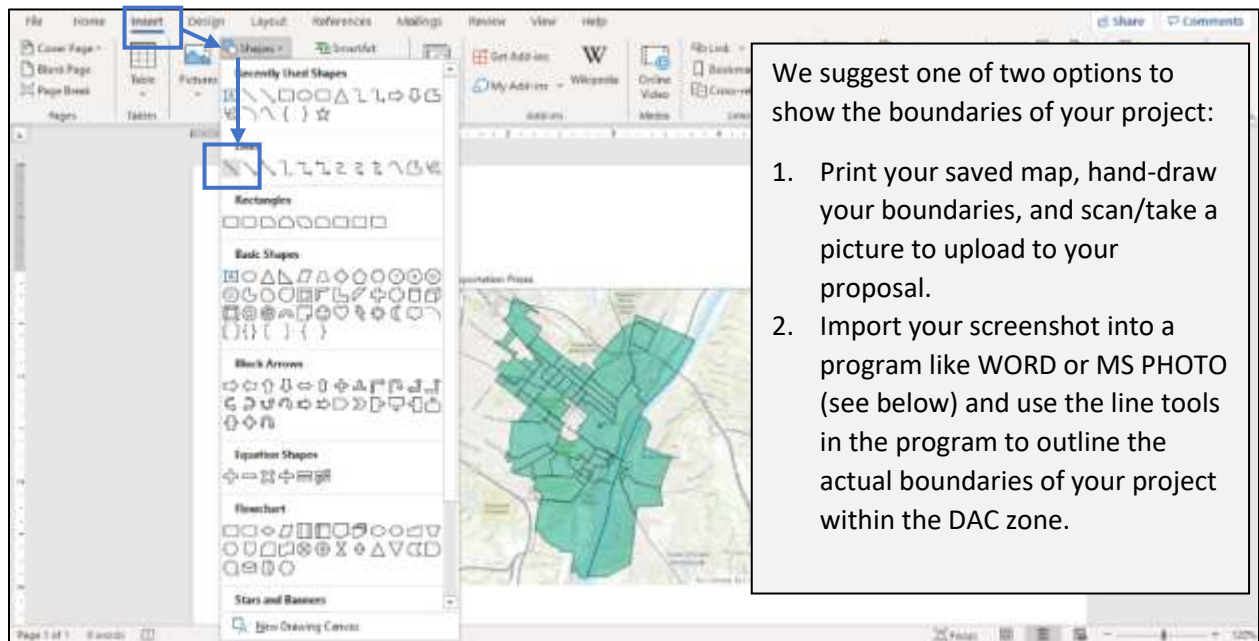






Save a copy of your selected map to include in your proposal by clicking on the Print tab or using your computer's screenshot tool.

If your proposed project will take place in non-adjacent locations (i.e. locations served don't fit in one image), please create a map for each location, and save them into one PDF for upload to the online proposal.



We suggest one of two options to show the boundaries of your project:

1. Print your saved map, hand-draw your boundaries, and scan/take a picture to upload to your proposal.
2. Import your screenshot into a program like WORD or MS PHOTO (see below) and use the line tools in the program to outline the actual boundaries of your project within the DAC zone.

