

"Purchasing is your business; providing quality is ours."

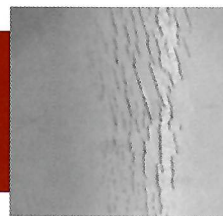
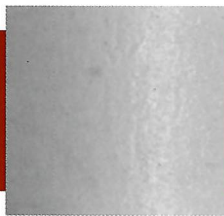


4562-C South Valley Pike | Rockingham, VA 22801

540-437-9360

www.countylineva.com | sales@countylineva.com

Heated vs. Cold
Formed Panels



*magnification of the
major rib*

US Steel Corporation, Research and Technology Center, Technical Bulletin Construction, TBP 2012.12

Aspect Endurance Series Color Options



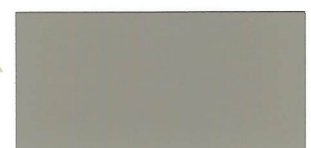
Brite White



Beige



Light Stone



Clay



Tan



Bronze



Brown



Red



Ash Gray



Slate



Charcoal



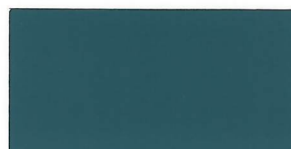
Black



Burgundy



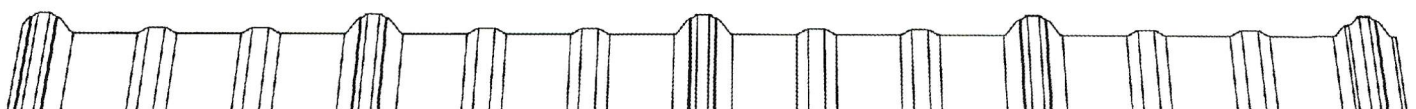
Ivy



Ocean Blue



Heron Blue



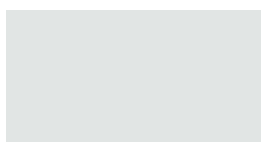


ASPECT COLOR OPTIONS

28 Ga. Endurance Series



Slate



Bright White



Burgundy



Charcoal



Ash Gray



Black



Bronze



Tan



Beige



Ivy



Ocean Blue



Brown



Red



Clay



Light Stone



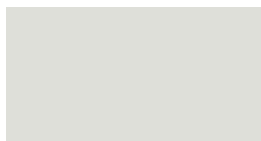
Matte Ivy



Matte Black



Matte Charcoal



* Bone White



* Crimson Red



* Heron Blue

* 27 Ga Elite Series

Interactive color visualizer available online.

The accuracy of the painted sample is not guaranteed.

For 100% color matching, you may request a free painted metal sample.

28 Ga. Endurance Series



27 Ga. Elite Series

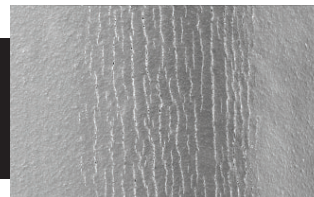


"Purchasing is your business, providing quality is ours."



The Aspect Panel is our exposed-fastener panel, manufactured here at County Line Materials for fast turn around. We are able to provide you your metal order in 24 hours. Our panels are rolled to custom lengths, saving you from paying for those few extra inches that are not needed.

Heated vs. Cold Rolled Panels



Magnification of the major rib

US Steel Corporation, Research and Technology Center, Technical Bulletin Construction, TBP 2012.12

Heat forming eliminates paint cracking over the ribs during manufacturing of the panel. Once paint cracks, it is an invitation for rusting of the panel. A heat formed panel adds to the longevity of your paint system and the life of your metal panel.

4562-C South Valley Pike
Rockingham, VA 22801
Phone: 540-437-9360
www.countylineva.com
sales@countylineva.com

