

# A-Gripen Sorterings-/steingrip DGS

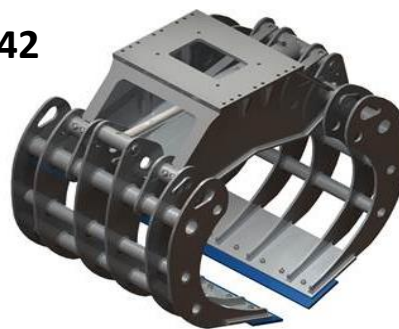
DGS 12/20/28



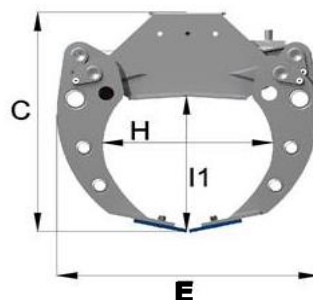
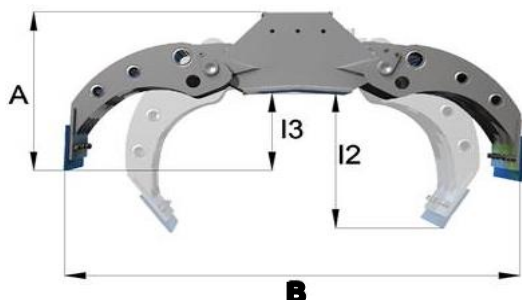
DGS 35



DGS 42



| Modell                  |                          | DGS12 | DGS20 | DGS28 | DGS35 | DGS39 | DGS42 |      |
|-------------------------|--------------------------|-------|-------|-------|-------|-------|-------|------|
| A                       | Height when open         | mm    | 430   | 470   | 625   | 690   | 885   | 1190 |
| B                       | Max opening              | mm    | 835   | 1225  | 1545  | 1805  | 1890  | 2220 |
| C                       | Height closed            | mm    | 452   | 610   | 800   | 890   | 1000  | 1271 |
| E                       | Length closed            | mm    | 552   | 640   | 825   | 945   | 1125  | 1450 |
| F                       | Max Width                | mm    | 322   | 395   | 530   | 780   | 780   | 1000 |
| H                       | Gripping area width      | mm    | 375   | 390   | 530   | 610   | 762   | 1044 |
| I1                      | Gripping area height     | mm    | 237   | 335   | 460   | 535   | 660   | 824  |
| I2                      | Inside height opened 1m  | mm    | -     | 325   | 500   | 610   | 755   | 950  |
| I3                      | Inside height max opened | mm    | 221   | 210   | 300   | 340   | 555   | 753  |
| Weight                  |                          | kg    | 62    | 113   | 275   | 420   | 680   | 900  |
| Max load                |                          | kg    | 1500  | 3000  | 3500  | 5000  | 5000  | 5000 |
| Max working pressure    |                          | Bar   | 230   | 250   | 350   | 350   | 350   | 350  |
| Cylinder force          |                          | kN    | 45    | 78    | 175   | 275   | 275   | 332  |
| Gripping force arms tip |                          | kN    | 6,7   | 11    | 22,5  | 28    | 35    | 42   |
| Opening time 70l/min    |                          | s     | 0,16  | 0,28  | 0,45  | 0,8   | 1     | 1,6  |
| Closing time 70l/min    |                          | s     | 0,24  | 0,48  | 0,9   | 1,3   | 1,6   | 2,3  |



**ANKERLØKKEN EQUIPMENT A/S**

