

# FRD SENCI LUBE & OPTIONS

## Senci Lube

The FRD Central lubrication concept eliminates the regular manual greasing intervals during operation and provides an optimum level of lubrication. This FRD designed automatic lubrication system is directly breaker frame mounted without external hose guiding and provides continuous adjustable greasing of the working tool guiding area. The filling level of the transparent screw cartridge can be easily monitored from the excavator cabin and if required exchanged within minutes.

## Sencio-Rod grease is characterized by:

- High load carrying capacity
- Good corrosion protection
- Good water resistance
- Good separation efficiency
- Wear reduction
- Oxidation resistance

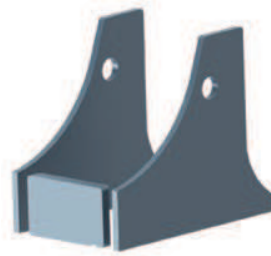


## Sencio Blue

**Rod grease** is a lithium-complex soap grease based on mineral oil, molybdenum disulphide (MoS<sub>2</sub>). It has good separation efficiency and reduces wear at high surface loads and temperatures up to 1100 °C

## Sencio White

**BIO-Rod grease** based on selected, rapidly biodegradable, synthetic esters, which give a very stable lithium saponified grease. Sencio-BIO-Rod grease has been awarded the European Ecolabel, registration no. DE/027/089.



## ARMOUR PLATES

Extra protection against wear in trenching and quarry works



## SWIVELS

Extending the life of the hoses



## TOOLBOX

All breakers have a toolbox with the necessary tools included.

WHERE **EXPERIENCE** COUNTS