

AUSABLE CHASM

We are hopeful that you are as excited as we are about the approaching Solar Eclipse on April 8th, 2024.

Here is some important information to review prior to your arrival so that you can have the best Solar Eclipse experience at Ausable Chasm!

Directions to Check-in and Parking:

From I-87, Exit 34

Head northeast on State Hwy 9N
N toward Pine Tree Dr
1.1 mi
Turn left onto US-9 N/N Ausable St
[Continue to follow US-9 N](#)
1.6 mi
Slight right onto NY-373 E
0.2 mi
Turn right onto Mace Chasm Rd
[Destination will be on the left](#)
0.2 mi

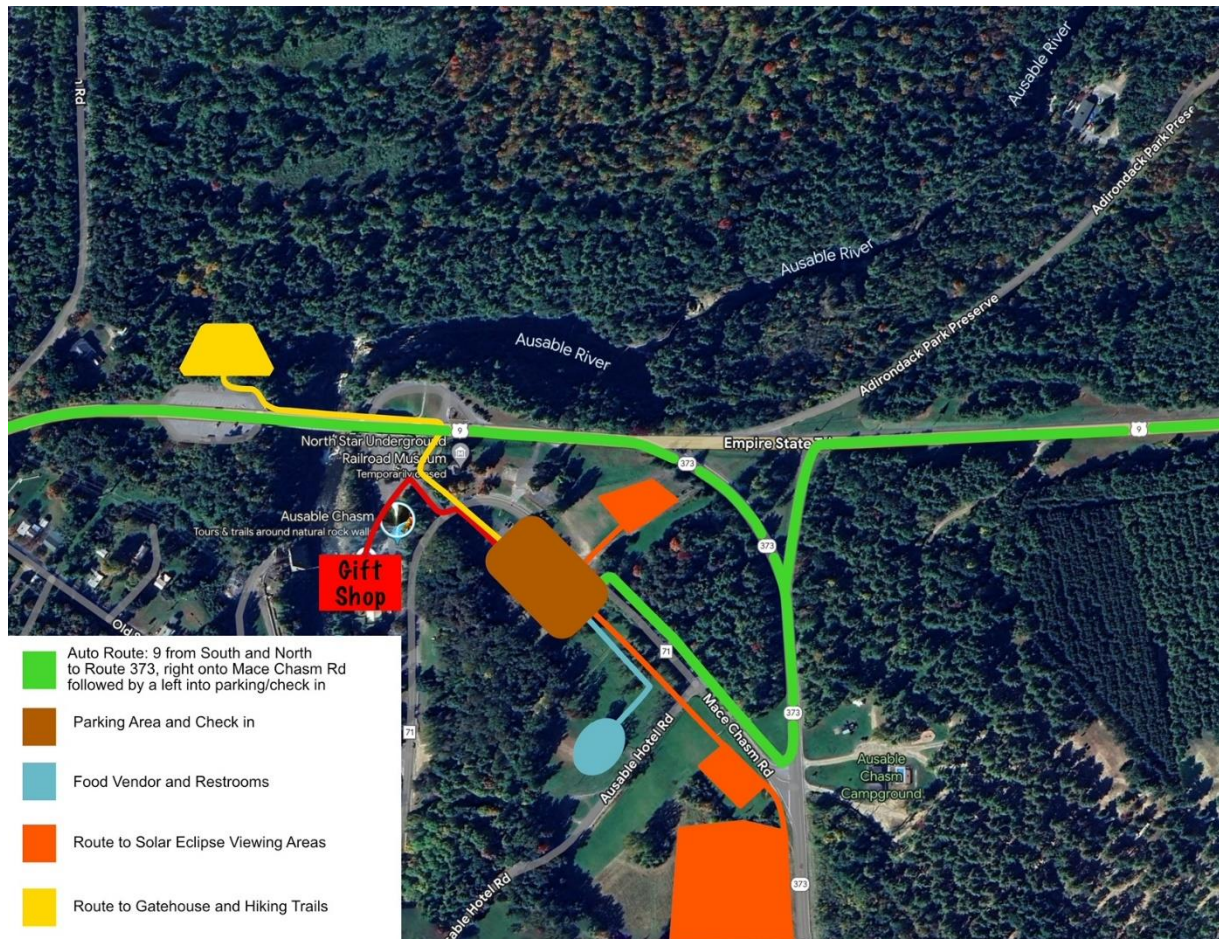
Scan for

Google Map



From I-87, Exit 35

Head north toward NY-442 W
203 ft
Turn right onto NY-442 E
2.5 mi
Turn right onto US-9 S
3.6 mi
Turn left onto NY-373 E
0.2 mi
Turn right onto Mace Chasm Rd
[Destination will be on the left](#)
0.2 mi



AUSABLE CHASM

When you arrive at the check in/parking lot please have your Rezdy Confirmation Receipt ready to show to the attendant. You will then be given your park wristbands which will provide you with access to our Hiking Trail system as well as Solar Eclipse viewing areas. You will also receive your keepsake solar eclipse glasses, keepsake magnet, and an event map.

You should plan to arrive between **9am and 1pm** to enjoy our scenic hiking trails as well as the Solar Eclipse. Our trails will be “Walk-in and Walk-out” so we would encourage you to time your hike so that you have enough time to get back to your spot or find a spot at one of our Eclipse viewing areas. We are suggesting that all guests be back from their hike no later than **1:45PM**.

Weather Related Information:

This event occurs outdoors, rain or shine. Weather in our area during the early spring months can be slightly chilly with highs in the high 40's to mid-50's. Reservations are **non-refundable** and we are not responsible for inclement weather the day of.

Viewing Tips: Keep in mind you should wear certified solar eclipse glasses. Cell phones require special filtration to view or photograph the Eclipse, your viewing glasses will not protect your cell phone camera from damage.

Additional Information:

- You are welcome to bring your own certified Solar Eclipse viewing materials and devices.
- We are providing certified Solar Eclipse viewing glasses for your convenience. We are not responsible if you do not properly wear them during the eclipse.
- You are welcome to bring your own lawn chairs, (**we do not provide them**).
- Pop up canopies or any portable structures which could obstruct the view of others during the Eclipse are not allowed.
- Food, snacks, and drinks are permissible, but you must carry out your own waste.
- **No pets allowed on trails, parking, and viewing areas.**
- For your convenience Tammy's Lunch Box will be offering a wide menu of food items and drinks as well as treats and High Peaks Brew Mobil Coffee Bar will be whipping up awesome coffee creations.
- Transportation off the trails is not available. The trails are “walk-in and walk out” only.
- Please keep in mind that cell phone service is limited in the area and WIFI is not available.

Ausable Chasm

A Natural Wonder

New York City
I-87 South

