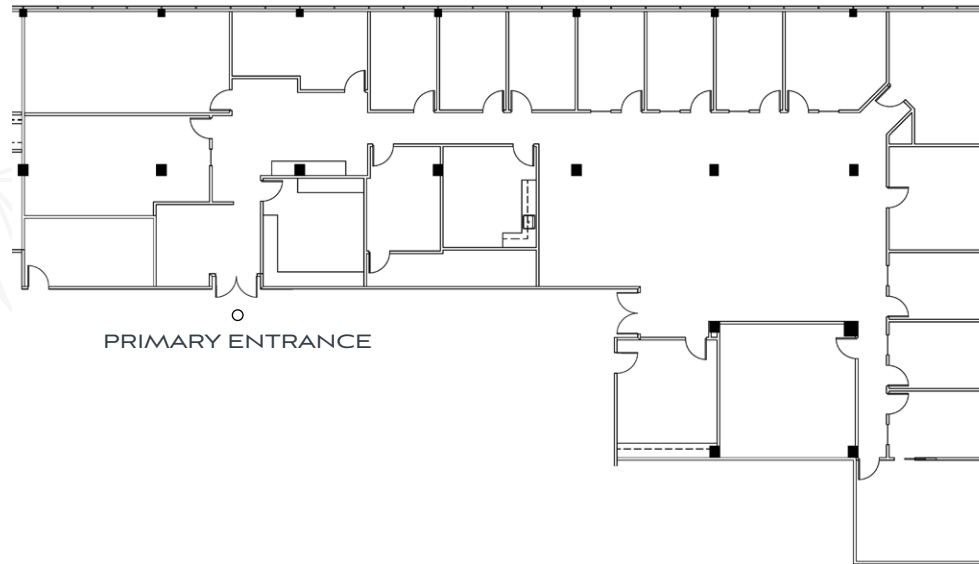


ALTMORE™

THREE

Suite 500

8,515 RSF



Note: Drawing Not to Scale

SITE KEY



*For leasing,
contact:*

Kyle Kenyon
First Vice President
+1 404 923 1287
kyle.kenyon@cbre.com

Chris Port
Executive Vice President
+1 404 504 5964
chris.port@cbre.com

Alex Port
Associate
+1 404 504 5941
alex.port@cbre.com

Leased by:

CBRE

A strategic development of:



THE SIMPSON ORGANIZATION

CBRE, Inc.
3550 Lenox Road NE
+1 404 504 7900
www.cbre.us/atlanta

© 2020 CBRE, Inc. All rights reserved. This information has been obtained from sources believed reliable, but has not been verified for accuracy or completeness. You should conduct a careful, independent investigation of the property and verify all information. Any reliance on this information is solely at your own risk. CBRE and the CBRE logo are service marks of CBRE, Inc. All other marks displayed on this document are the property of their respective owners. Photos herein are the property of their respective owners. Use of these images without the express written consent of the owner is prohibited. PMStudio_2020